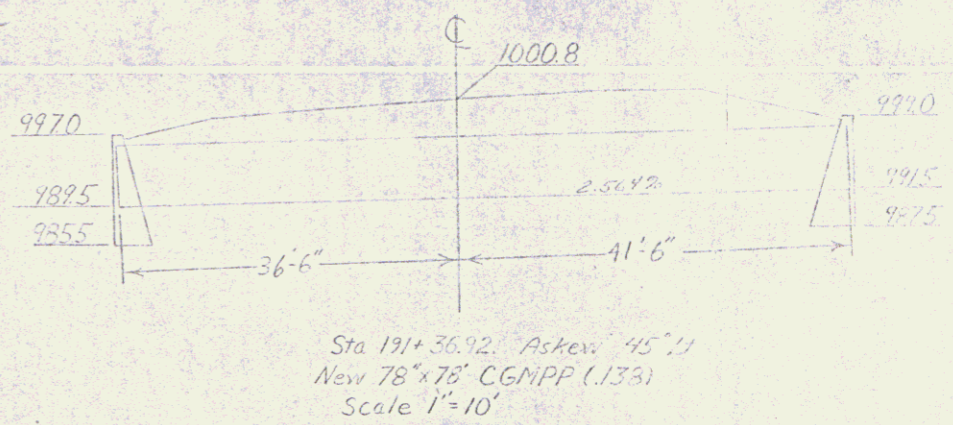
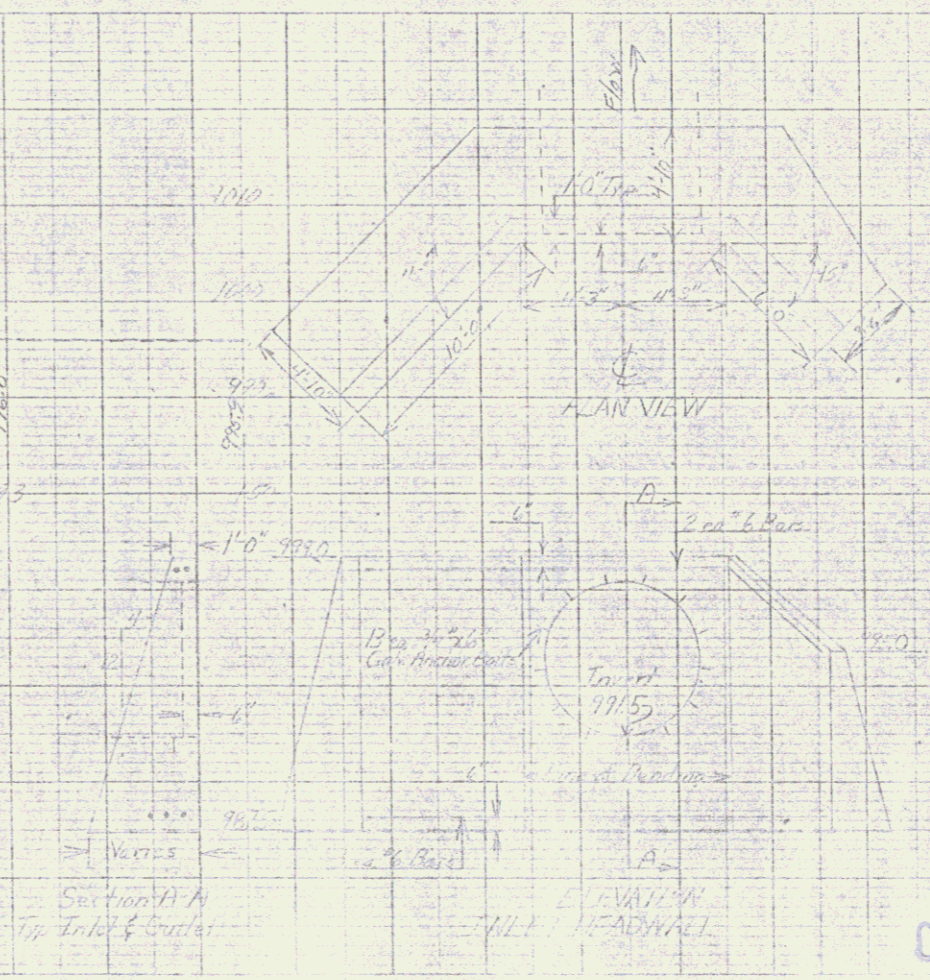


END R.O.W. PROJECT
BP 1761 STA. 193+80 25'LT.



QUANTITIES		
Classified Excavation	CY	1150
Granular Base	CY	600
Subbase of Gravel	CY	450
Subbase of Crushed Gravel	CY	125
1/4" Comp. Present	Ton	200
Concrete Class B	CY	57
Reinforcing Steel	Lb.	345
Stone Fill, Type II	CY	150
78" x 78" CGMPP (133)	LS	1
Gravel Bed, 18" to 24" Depth	LS	275
Gravel	Ta	4



WILLIAMSTOWN
VT. RTE. 64 BP 1761
SHEET 3 OF 3

OCT 06 1983