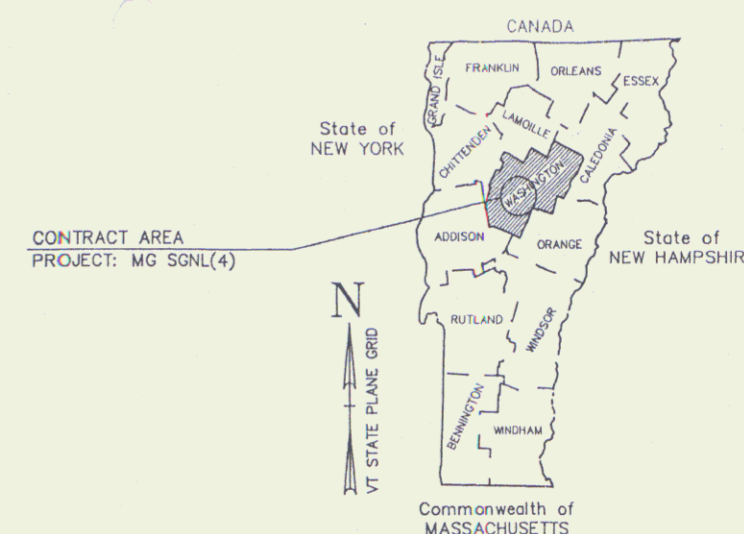


STATE OF VERMONT AGENCY OF TRANSPORTATION



PROPOSED IMPROVEMENT **TOWN OF BERLIN** COUNTY OF WASHINGTON **U.S. ROUTE 302 (F.A.U.)**

R.O.W. PLANS



THIS PROJECT BEGINS APPROXIMATELY 0.148 MILES SOUTHERLY OF THE MONTPELIER/BERLIN TOWN LINE AND CONTINUES SOUTHERLY FOR 0.502 MILES TO THE LIMIT OF WORK. AT THE LIMIT OF WORK APPROXIMATELY 0.972 MILES SOUTHERLY OF THE MONTPELIER/BERLIN TOWN LINE THE PROJECT CONTINUES SOUTHERLY FOR 0.180 MILES.

LENGTH OF ROADWAY: 5300 FEET = 1.004 MILES
LENGTH OF PROJECT: 3600 FEET = 0.682 MILES

PROJECT DESCRIPTION

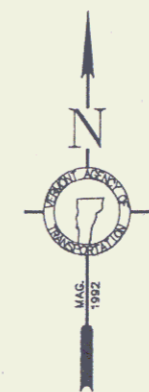
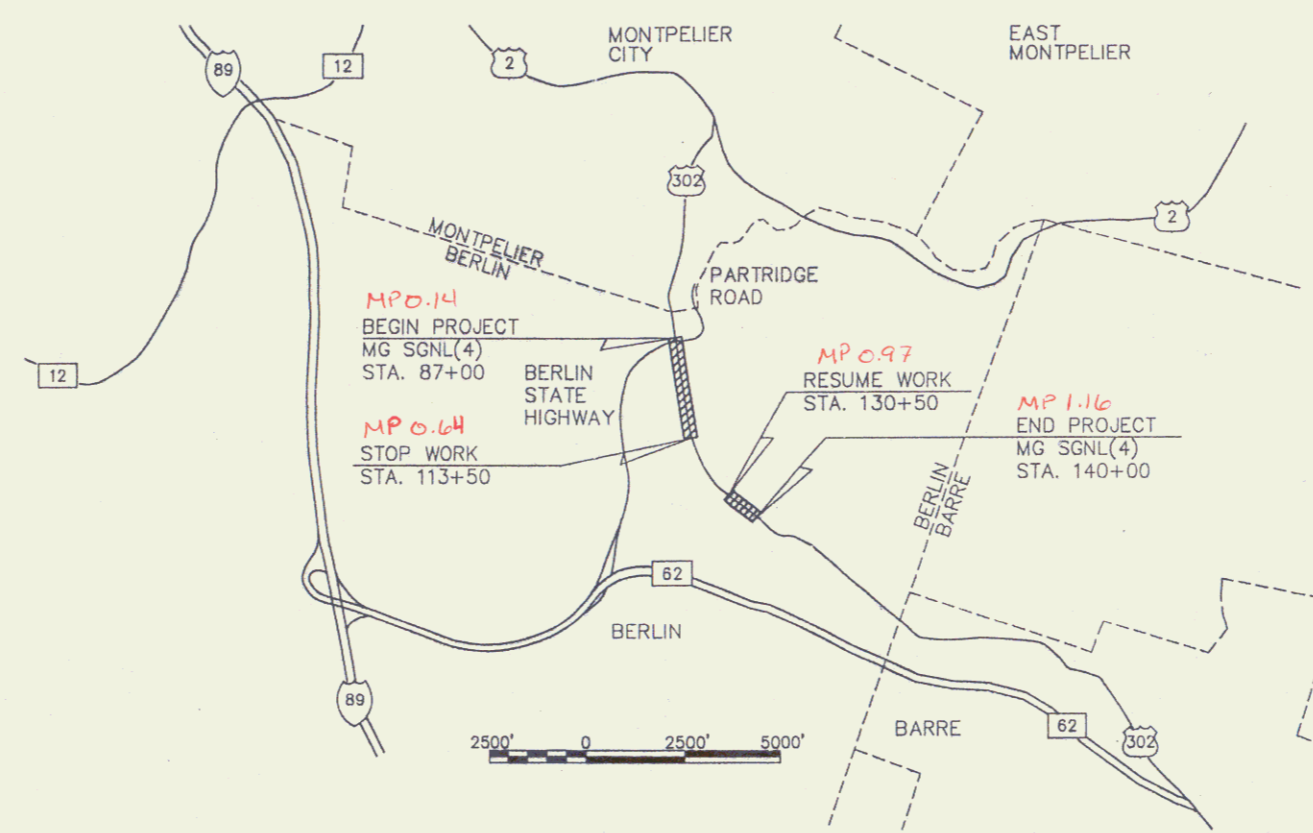
PROJECT CONSISTS OF MODIFYING TRAFFIC SIGNAL EQUIPMENT TO INCREASE CAPACITY AND IMPROVE SAFETY AND INCLUDES UPDATING PAVEMENT MARKINGS AND APPROACH SIGNING, AND MINOR GEOMETRIC MODIFICATIONS.

CONVENTIONAL SIGNS

COUNTY LINE	---
TOWN LINE	- - - -
LIMITS OF ACCESS	○ ○ ○ ○
POINT OF ACCESS	X
FENCE LINE	- x - x -
STONE WALL	o o o o o o
TRAVELED WAY	=====
GUARD RAIL	o o o o o o
RAILROAD	
SURVEY LINE	- - - -
DIVERT	--- ---
POWER POLE	○ ○ ○ ○
TELEPHONE POLE	○ ○ ○ ○
TREES	● ● ● ●
CONTROL OF ACCESS	///
PROPERTY LINE	---
R.O.W. TAKING LINE	SR
SLOPE RIGHTS	△ △ △ △
TOP OF CLIT	○ ○ ○ ○
TOE OF SLOPE	○ ○ ○ ○

DATUM

VERTICAL	N/A
HORIZONTAL	N/A



ALL DRIVES AS INDICATED ON PLANS ARE SUBJECT TO PERMITS PURSUANT TO TITLE 19 SECTION III, V.S.A.

FEB 19 2003

TYLIN INTERNATIONAL
Pin # 87D074

THESE PLANS ARE SUBJECT TO SUCH ENGINEERING CHANGES AS MAY BE REQUIRED BY THE DIRECTOR OF ENGINEERING.
CONSTRUCTION IS TO BE CARRIED ON IN ACCORDANCE WITH THESE PLANS AND THE STANDARD SPECIFICATIONS FOR CONSTRUCTION DATED 1990, AS APPROVED BY THE FEDERAL HIGHWAY ADMINISTRATION ON MARCH 15, 1990 FOR USE ON THIS PROJECT, INCLUDING ALL SUBSEQUENT REVISIONS AND SUCH REVISED SPECIFICATIONS AND SPECIAL PROVISIONS AS ARE INCORPORATED IN THESE PLANS.

APPROVED: *[Signature]* DATE: 4/1/97
Director of Project Development

APPROVED: _____ DATE: _____
Chief, Right of Way

BERLIN
MG SGNL (4)

R. O. W. SHEET 1 OF 17

**STATE OF VERMONT
AGENCY OF TRANSPORTATION
RIGHT OF WAY PLANS
DETAIL SHEET**

PARCEL NO.	GRANTOR	SHEET NO.	BEGINNING STATION	ENDING STATION	TAKING	REM.	RIGHTS	TITLE TAKEN	DATE	TOWN OR CITY RECORDED	BK.	PG.	REMARKS	REVISION NO.	SHEET	DESCRIPTION OF REVISION	DATE	MADE BY	APPROVED BY
1	TOWN OF BERLIN	5, 6 7	90+64 LT. 90+85 LT. 90+91 LT. 91+04 LT. 91+11 LT.	90+82 LT. 91+24 LT. 91+13 LT.			INSTALL & MAINTAIN (P) 440 S.F. APPROACH (T) 0.04 A± INSTALL (T) INSTALL (T) INSTALL & MAINTAIN (P)	WDOE	03-04-99	BERLIN	80	382-383	LOOP DETECTORS & PAVEMENT MARKINGS TH27 1820 S.F. TH27 TRAFFIC SIGN TH27 TRAFFIC SIGN TH27 STRAIN POLE & LUMINAIRE	1	3,13	PARCEL NO. 9 GOODHART. CHANGE INSTALL & MAINTAIN (P) FOR CURB AT STA. 111+88 LT. ~ 112+18 LT. TO INSTALL (T). MOVE THE AREA THAT IS IN THE RIGHTS COLUMN OF 490 S.F. ± TO THE PAVEMENT MARKINGS AT 112+12 LT. ~ 112+35 LT. PER C.O. 8982.	07-16-98	M. J. R.	L. W. B.
2	BENOIT PROPERTIES, INC. - LESSOR FRIENDLY ICE CREAM CORPORATION - LESSEE	5, 6 7	91+12 LT. 92+27 LT. 92+43 LT. 93+08 LT.	92+51 LT.			SLOPE (T) 1540 S.F. INSTALL & MAINTAIN (P) INSTALL & MAINTAIN (P)						STRAIN POLE SIGN 42" PAVED DRIVE MM 0026	2	3,13	PARCEL NO. 10 MALONE. CHANGE INSTALL & MAINTAIN (P) FOR CURB AT STA. 112+57 LT. ~ 112+60 LT.; TO INSTALL (T). PER C.O. 8983.	07-16-98	M. J. R.	L. W. B.
3	GAGNON, REJEAN A. & DONNA M.	5, 6 7	94+00 RT.				INSTALL & MAINTAIN (P)	WDOE	05-17-99	BERLIN	81	166	TRAFFIC SIGN	3	3,16	PARCEL NO. 14 ROSSI. ADD THE RIGHT TO INSTALL & MAINTAIN (P) FOR A SIGN AT STA. 137+64 LT. PER C.O. 8984.	07-16-98	M. J. R.	L. W. B.
4	CENTRAL VERMONT SHOPPING CENTER, INC.	9, 10 11	100+52 LT. 103+90 LT. 104+18 LT. 104+78 LT.	100+90 LT. 104+21 LT. 104+46 LT. 105+15 LT.			INSTALL & MAINTAIN (P) 440 S.F. CONST. (T) 140 S.F. INSTALL & MAINTAIN (P) 960 S.F. CONST. (T) 175 S.F.	WDOE	04-15-99	BERLIN	81	65-66	PAVEMENT MARKINGS LOOP DETECTOR & PAVEMENT MARKINGS	4	3,13	PARCEL NO. 10 MALONE. REVISE PROPOSED CURB TO MATCH THE EXISTING CURB. CHANGE INSTALL (T) FROM 112+57 LT. ~ 112+60 LT. TO 112+62 LT. ~ 112+73 LT. PER C.O. 9010.	11-25-98	M. J. R.	L. W. B.
5	THE LUSSIER TRUST FRANK LUSSIER & GEORGE W. NOSTRAND-CO-TRUSTEES - LESSOR MIDSTATE DODGE LLC - LESSEE	9, 10 11	103+31 RT. 103+98 RT. 104+81 RT.	103+77 RT. 104+17 RT. 105+13 RT.			CONST. (T) 230 S.F. INSTALL & MAINTAIN (P) 320 S.F. CONST. (T) 270 S.F.	WDOE	07-12-99	BERLIN	81	444-446	LOOP DETECTOR & PAVEMENT MARKINGS	5	2, 9	PARCEL NO. 5 LUSSIER TRUST. CHANGE PLANS TO SHOW OWNERSHIP AS LESSOR & LESSEE. PER C.O. 9025. REPRODUCIBLES TO LARRY WHEELER OF PAVEMENT MANAGEMENT. 01-27-00 SIGNAL PROJECT AND PAVING PROJECT ARE BEING COMBINED IN THE BIDDING PROCESS.	03-11-99	P. J. H.	L. W. B.
6	MCDONALD'S CORPORATION	11, 12	108+07 LT. 109+07 LT. 109+07 LT.	108+39 LT. 109+22 LT.			INSTALL & MAINTAIN (P) 470 S.F. INSTALL (T) CONST. (T) 50 S.F.	COND.	06-02-99	BERLIN	81	233-236	LOOP DETECTORS & PAVEMENT MARKINGS CURB						
7	M. J. M. ENTERPRISES, INC. - LESSOR B & S FOOD SERVICES, INC. - LESSEE	11, 12	108+35 RT. 108+55 RT. 108+57 RT. 108+55 RT. 108+91 RT.	108+62 RT. 108+63 RT. 108+62 RT.			INSTALL (T) SLOPE (T) 60 S.F. INSTALL (T) LANDSCAPE (T) INSTALL (T)	COND.	06-02-99	BERLIN	81	233-236	PEDESTRIAN POLE CURB TRAFFIC SIGN						

FEB 19 2003

ACCT.MRyan
\\voot.cadd\fillingcabin\81d074\RightOfWay\rd074.dgn
DATE PLOTTED 26-JAN-2000
rd074.dtl

DR. (P)- DRAINAGE RIGHT
DIT. (P)- DITCHING RIGHT
CH. (P)- CHANNEL RT.
DRIVE (T)- DRIVE RIGHT
CUL. (P)- CULVERT RIGHT
W- WATER SOURCES

PRESENT R.O.W.
TAKING WITHOUT ACCESS
TAKING WITHOUT ACCESS ALONG PROPERTY LINE
TAKING WITH ACCESS
PERMANENT EASEMENT
TEMPORARY EASEMENT

LEGEND
--- C&T (P) --- CLEARING & TRIMMING
... CZ (P) ... CLEAR ZONE
--- CONST. (T) --- CONSTRUCTION EASEMENT
--- SR --- SLOPE RIGHTS
--- P --- PROPERTY LINE
--- L --- TOP OF CUT
--- O --- TOE OF SLOPE

APPROVED: LAWRENCE W. BLISS DATE: 11-07-97
AGENT D. PLANS & TITLES

R. O. W. PLANS
BERLIN
MG SGNL (4)
SHEET 2 OF 17

**STATE OF VERMONT
AGENCY OF TRANSPORTATION
RIGHT OF WAY PLANS
DETAIL SHEET**

PARCEL NO.	GRANTOR	SHEET NO.	BEGINNING STATION	ENDING STATION	TAKING	REM.	RIGHTS	TITLE TAKEN	DATE	TOWN OR CITY RECORDED	BK.	PG.	REMARKS	REVISION NO.	SHEET	DESCRIPTION OF REVISION	DATE	MADE BY	APPROVED BY	
8	BERLIN REALTY TRUST - LESSOR STUART'S DEPARTMENT STORES, INC. LESSEE	11,12 13	108+89 RT. 109+15 RT. 109+18 RT.	109+15 RT. 109+53 RT. 109+59 RT.			INSTALL & MAINTAIN (P) 950 S.F. SLOPE (T) 40 S.F. CONST. (T) 150 S.F.	COND.	06-02-99	BERLIN	81	233- 236	LOOP DETECTORS & PAVEMENT MARKINGS							
9	GOODHART ASSOCIATES	11,12 13	109+22 LT. 109+45 LT. 109+46 LT. 111+86 LT. 111+88 LT. 112+12 LT. 112+36 LT.	109+46 LT. 109+60 LT. 109+58 LT. 112+18 LT. 112+18 LT. 112+35 LT.			CONST (T) 130 S.F. SLOPE (T) 50 S.F. INSTALL & MAINTAIN (P) SLOPE (T) 700 S.F. INSTALL (T) INSTALL & MAINTAIN (P) 490 S.F. DRIVE (T)	COND.	06-02-99	BERLIN	81	233- 236	CURB & SIDEWALK CURB PAVEMENT MARKINGS 42" PAVED MM 0063							
10	MALONE, PATRICK M.	13	112+34 LT. 112+36 LT. 112+62 LT.	112+42 LT. 112+73 LT.			INSTALL & MAINTAIN (P) DRIVE (T) INSTALL (T)	MODE	07-13-99	BERLIN	81	454	PAVEMENT MARKINGS 42" PAVED MM 0063 CURB							
11	NEWHOUSE, ARTHUR N., III & KARIN A.	14,15 16	135+12 LT.	135+17 LT.			CONST. (T) 190 S.F.													
12	J. K. L. LIMITED PARTNERSHIP	14,15 16	135+17 LT. 135+17 LT. 135+20 LT. 135+17 LT. 135+50 LT. 135+51 LT.	135+27 LT. 135+24 LT. 135+30 LT. 135+48 LT. 135+48 LT.			CONST. (T) 30 S.F. SLOPE (T) 240 S.F. INSTALL & MAINTAIN (P) INSTALL & MAINTAIN (P) 1200 S.F. INSTALL (T) INSTALL (T)	COND.	06-02-99	BERLIN	81	233- 236	STRAIN POLE & WIRE LOOP DETECTORS & PAVEMENT MARKINGS TRAFFIC SIGN TRAFFIC SIGN							
13	WASHINGTON COUNTY RAILROAD, LESSEE	14,15 16	135+09 RT. 135+14 RT. 135+94 RT. 135+23 RT.	135+14 RT. 135+94 RT. 135+99 RT. 135+81 RT.			CONST. (T) 85 S.F. SLOPE (T) 1440 S.F. CONST. (T) 95 S.F. INSTALL & MAINTAIN (P)						SIGNAL SYSTEM							
14	ROSSI, PIERINO P. & ROSSI, ISABELLA C.	16	136+03 LT. 137+64 LT.				INSTALL & MAINTAIN (P) INSTALL & MAINTAIN (P)	MODE	06-11-99	BERLIN	81	246	SIGN SIGN							

FEB 19 2003

ACCT_MRyan
\\voot_cadd\fillingocabinet\81d074\RightofWay\rd074d.dgn
DATE PLOTTED 26-JAN-2000
rd074d2.1

DR. (P)- DRAINAGE RIGHT
DIT. (P)- DITCHING RIGHT
CH. (P)- CHANNEL RT.
DRIVE (T)- DRIVE RIGHT
CUL. (P)- CULVERT RIGHT
[W]- WATER SOURCES

PRESENT R.O.W.
TAKING WITHOUT ACCESS
TAKING WITHOUT ACCESS ALONG PROPERTY LINE
TAKING WITH ACCESS
PERMANENT EASEMENT
TEMPORARY EASEMENT

LEGEND
--- C&T (P) --- CLEARING & TRIMMING
... CZ (P) ... CLEAR ZONE
--- CONST. (T) --- CONSTRUCTION EASEMENT
SR SR SLOPE RIGHTS
P P PROPERTY LINE
--- L --- TOP OF CUT
--- O --- TOP OF SLOPE

APPROVED: LAWRENCE W. BLISS DATE: 11-07-97
AGENT D, PLANS & TITLES

R. O. W. PLANS
BERLIN
MG SGNL (4)
SHEET 3 OF 17

FILE NAME: G:\TRV\VAO\VAOISS. (NEW) D: DATE: 1998-12-11

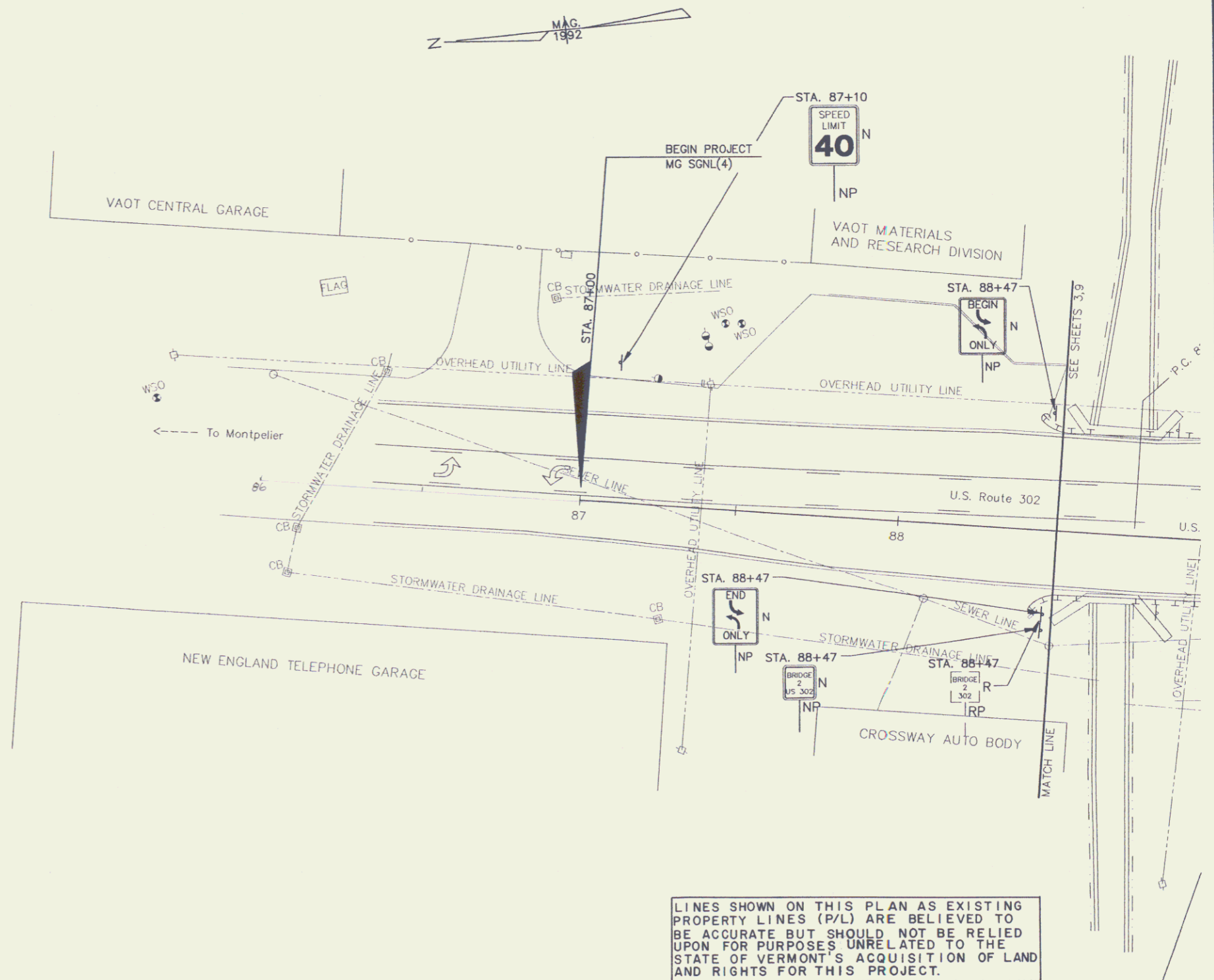
DATUM
 VERTICAL N/A
 HORIZONTAL N/A

SIGN LEGEND

R	— REMOVE
RET.	— RETAIN
R & S	— REMOVE & SALVAGE
S	— SALVAGE
N	— NEW
RP	— REMOVE POST
SP	— SALVAGE POST
NP	— NEW POST

EXISTING	NEW	LEGEND
⊕	⊕	UTILITY POLE
○	○	LUMINAIRE
⊕	⊕	WOOD POLE
○	○	STRAIN POLE
⊞	⊞	CONTROLLER CABINET
	■	PULLBOX/JUNCTION BOX
→	→(P)	SIGNAL HEAD
	△	VEHICLE LOOP DETECTOR
	—	CONDUIT
	▬	VEHICLE LOOPS
	●	PEDESTAL POST

Note: Signs shown on these plans are based upon signs as depicted by Project Berlin STP 9413 (1) S October 1994 submittal. Signs beyond the project limits of this project are to be modified per the revised 1994 STP plans supplied by VAOT.



LINES SHOWN ON THIS PLAN AS EXISTING PROPERTY LINES (P/L) ARE BELIEVED TO BE ACCURATE BUT SHOULD NOT BE RELIED UPON FOR PURPOSES UNRELATED TO THE STATE OF VERMONT'S ACQUISITION OF LAND AND RIGHTS FOR THIS PROJECT.



FEB 19 2003

SIGNING AND STRIPING PLANS

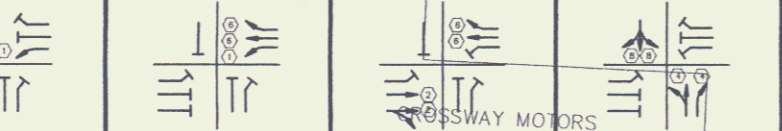
PREPARED BY TAE/CMB DATE 12/96
 CHECKED BY KGH DATE 12/96
 DESIGN SUPERVISOR TAE DATE 12/96
 PROJ. BERLIN
 MG SGNL(4)

R.O.W. SHEET 4 OF 17

FILE NAME: G:\TRV\2007\7172\12-10-06\12-10-06.dwg
 DATE: 12-10-06
 DRAWN BY: TAE

DATUM
 VERTICAL: N/A
 HORIZONTAL: N/A

TIMING AND PHASING	PHASE 1+5		PHASE 1+6		PHASE 2+6 (Dwell)			PHASE 4+8		
	R	W	R	W	R	W	R	W	R	W
VEHICLE	1	1	1	1	1	1	1	1	1	1
MINIMUM	4.1	4.1	4.1	4.1	4.2	4.2	4.2	4.2	4.2	4.2
MAXIMUM	4.1	4.1	4.1	4.1	4.2	4.2	4.2	4.2	4.2	4.2
TRUCK	1	1	1	1	1	1	1	1	1	1
MINIMUM	4.1	4.1	4.1	4.1	4.2	4.2	4.2	4.2	4.2	4.2
MAXIMUM	4.1	4.1	4.1	4.1	4.2	4.2	4.2	4.2	4.2	4.2
FACE 1	R	R	R	R	R	R	R	R	R	R
FACE 2	R	R	R	R	R	R	R	R	R	R
FACE 3	R	R	R	R	R	R	R	R	R	R
FACE 4	R	R	R	R	R	R	R	R	R	R
FACE 5	R	R	R	R	R	R	R	R	R	R
FACE 6	R	R	R	R	R	R	R	R	R	R
FACE 7	R	R	R	R	R	R	R	R	R	R
FACE 8	R	R	R	R	R	R	R	R	R	R



1996 AVERAGE WEEKDAY TRAFFIC VOLUME/% TRUCKS

AM	OFF	PM	DHV**
8	16	6	8/3
451	584	567	798/3
63	150	137	189/3

** DHV - 2001 DESIGN HOUR VOLUME/% TRUCKS

AM	OFF	PM	DHV**
11/2	8	18	10
880/2	636	550	327
254/2	196	192	238

INSTALL OVERHEAD TRAFFIC SIGNAL INTERCONNECT CABLE FROM THE VAOT MATERIALS RESEARCH BUILDING TO THE AMES DRIVE INTERSECTION. REFER TO THE SIGNING AND STRIPING PLANS FOR THE CONTINUATION OF THIS CABLE THROUGH AREAS NOT COVERED BY THE TRAFFIC PLANS.

INSTALL NEW SIGNAL SYSTEM (ALL EQUIPMENT) AS SHOWN
 INSTALL CONTROLLER CABINET ON POLE #1
 CONSTRUCT CONCRETE PAD
 POWER FEED (USE EXISTING UNDERGROUND LINE)

REMOVE EXISTING SIGNAL SYSTEM (VAOT OWNED)

DO NOT DISTURB SIGNS.
 INSTALL & MAINTAIN (P)

RELOCATED POLE (BY OTHERS)

SIGN TO BE LEFT IN PLACE

TRAFFIC SIGNAL INTERCONNECT CABLE

RESTAURANT

SEARS

U.S. Route 302

U.S. Route 302

SEWER LINE

SEWER LINE

SEWER LINE

SEWER LINE

SEWER LINE

SEWER LINE

SEWER LINE

SEWER LINE

SEWER LINE

SEWER LINE

SEWER LINE

SEWER LINE

SEWER LINE

SEWER LINE

SEWER LINE

SEWER LINE

SEWER LINE

SEWER LINE

SEWER LINE

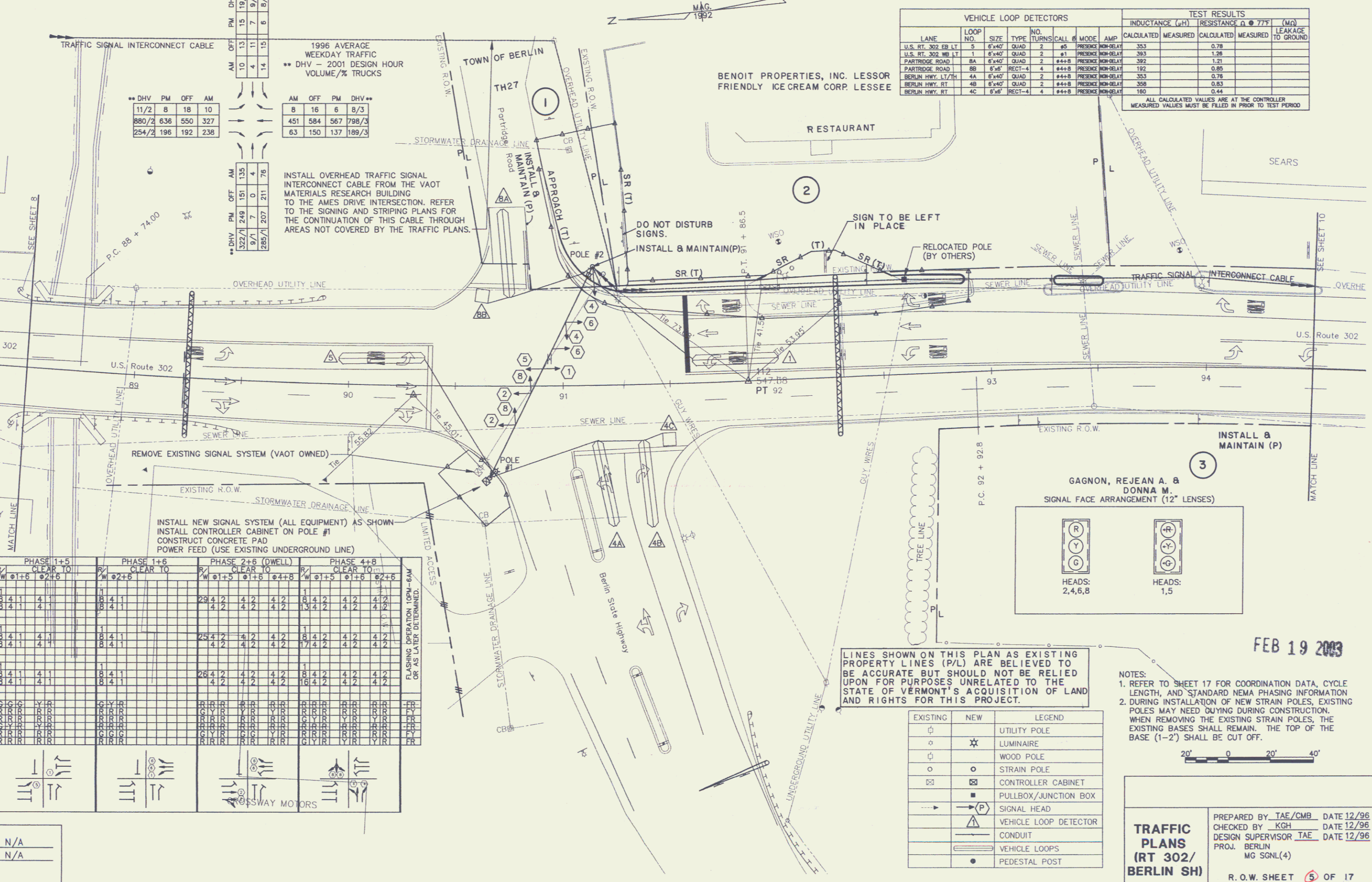
SEWER LINE

SEWER LINE

SEWER LINE

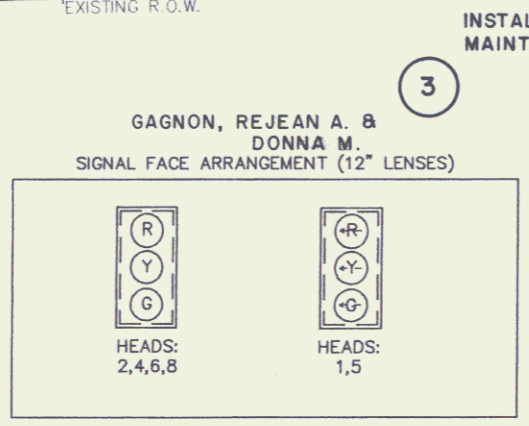
SEWER LINE

SEWER LINE



VEHICLE LOOP DETECTORS										TEST RESULTS		
LANE	LOOP NO.	SIZE	TYPE	NO. TURNS	CALL #	MODE	AMP	INDUCTANCE (uH)	RESISTANCE @ 77°F (MΩ)	LEAKAGE TO GROUND		
U.S. RT. 302 EB LT	5	6'x40'	QUAD	2	#5	PRESNCE NON-DELAY	353		0.78			
U.S. RT. 302 WB LT	1	6'x40'	QUAD	2	#1	PRESNCE NON-DELAY	393		1.28			
PARTRIDGE ROAD	8A	6'x40'	QUAD	2	#4+B	PRESNCE NON-DELAY	392		1.21			
PARTRIDGE ROAD	8B	6'x40'	RECT-4	4	#4+B	PRESNCE NON-DELAY	192		0.85			
BERLIN HWY. LT/TH	4A	6'x40'	QUAD	2	#4+B	PRESNCE NON-DELAY	353		0.79			
BERLIN HWY. RT	4B	6'x40'	QUAD	2	#4+B	PRESNCE NON-DELAY	358		0.83			
BERLIN HWY. RT	4C	6'x40'	RECT-4	4	#4+B	PRESNCE NON-DELAY	180		0.44			

ALL CALCULATED VALUES ARE AT THE CONTROLLER
 MEASURED VALUES MUST BE FILLED IN PRIOR TO TEST PERIOD



EXISTING PROPERTY LINES (P/L) ARE BELIEVED TO BE ACCURATE BUT SHOULD NOT BE RELIED UPON FOR PURPOSES UNRELATED TO THE STATE OF VERMONT'S ACQUISITION OF LAND AND RIGHTS FOR THIS PROJECT.

EXISTING	NEW	LEGEND
⊕	⊕	UTILITY POLE
⊙	⊙	LUMINAIRE
⊠	⊠	WOOD POLE
○	○	STRAIN POLE
⊞	⊞	CONTROLLER CABINET
⊠	⊠	PULLBOX/JUNCTION BOX
→	→	SIGNAL HEAD
⊠	⊠	VEHICLE LOOP DETECTOR
—	—	CONDUIT
—	—	VEHICLE LOOPS
●	●	PEDESTAL POST

NOTES:
 1. REFER TO SHEET 17 FOR COORDINATION DATA, CYCLE LENGTH, AND STANDARD NEMA PHASING INFORMATION.
 2. DURING INSTALLATION OF NEW STRAIN POLES, EXISTING POLES MAY NEED GUYING DURING CONSTRUCTION. WHEN REMOVING THE EXISTING STRAIN POLES, THE EXISTING BASES SHALL REMAIN. THE TOP OF THE BASE (1-2) SHALL BE CUT OFF.



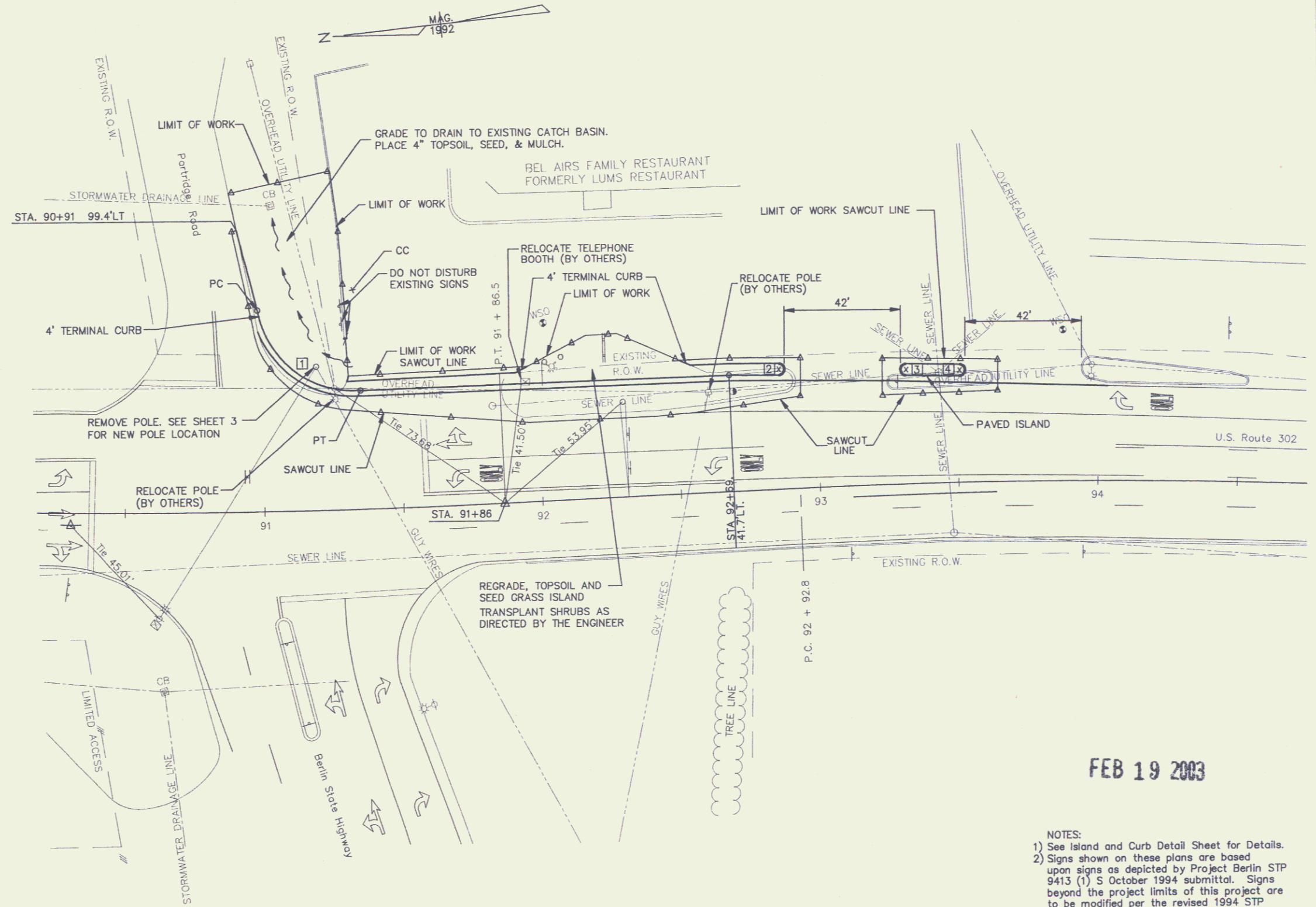
TRAFFIC PLANS (RT 302/BERLIN SH)
 PREPARED BY: TAE/CMB DATE 12/96
 CHECKED BY: KGH DATE 12/96
 DESIGN SUPERVISOR: TAE DATE 12/96
 PROJ. BERLIN MG SGNL(4)
 R. O. W. SHEET 5 OF 17

5

BITUMINOUS CONCRETE CURB
 90+98, 71.1' LT TO 92+94, 42.7' LT
 93+25, 41.1' LT TO 93+63, 39.8' LT

CHANGING ELEV. OF DROP INLETS, CATCH BASINS OR MANHOLES
 91+83, 35' LT
 93+44, 40' LT

CURVE	PC	PT	CC	RADIUS
1	90+88	91+36	91+35	35.0'
2			92+87	2.0'
3			93+32	2.0'
4			93+61	2.0'



FEB 19 2003

NOTES:
 1) See Island and Curb Detail Sheet for Details.
 2) Signs shown on these plans are based upon signs as depicted by Project Berlin STP 9413 (1) S October 1994 submittal. Signs beyond the project limits of this project are to be modified per the revised 1994 STP plans supplied by VAOT.



LINES SHOWN ON THIS PLAN AS EXISTING PROPERTY LINES (P/L) ARE BELIEVED TO BE ACCURATE BUT SHOULD NOT BE RELIED UPON FOR PURPOSES UNRELATED TO THE STATE OF VERMONT'S ACQUISITION OF LAND AND RIGHTS FOR THIS PROJECT.

DATUM
 VERTICAL N/A
 HORIZONTAL N/A

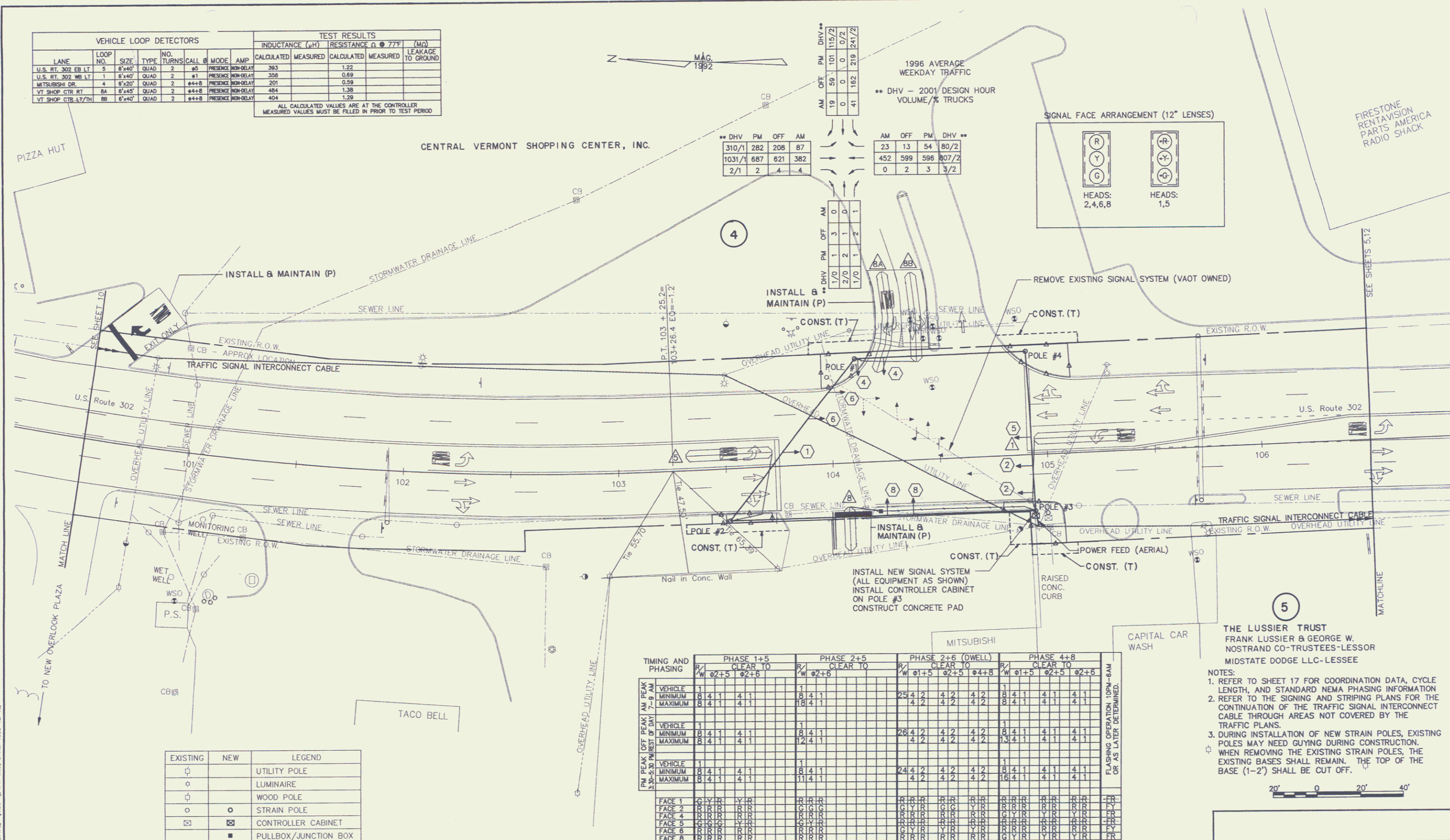
LANE WIDENING PLAN	PREPARED BY <u>CMB</u> DATE <u>12/98</u>
	CHECKED BY <u>SJB</u> DATE <u>12/98</u>
	DESIGN SUPERVISOR <u>TAE</u> DATE <u>12/98</u>
	PROJ. BERLIN MG SGNL(4)

R. O. W. SHEET **6** OF 17

FILE NAME: G:\TRAFFIC\201\201P12.DWG DATE: 1998-12-10

VEHICLE LOOP DETECTORS							TEST RESULTS				
LANE	LOOP NO.	SIZE	TYPE	NO. TURNS	CALL #	MODE	INDUCTANCE (μH)	RESISTANCE @ 77°F (Ω)	LEAKAGE TO GROUND (μA)		
							CALCULATED	MEASURED	CALCULATED	MEASURED	
U.S. RT. 302 EB LT	1	8'x40'	QUAD	2	#5	PRESENCE NON-DELAY	393		1.22		
U.S. RT. 302 WB LT	1	8'x40'	QUAD	2	#1	PRESENCE NON-DELAY	358		0.89		
MITSUBISHI DR	4	8'x20'	QUAD	2	#4+8	PRESENCE NON-DELAY	201		0.58		
VT SHOP CTR RT	8A	8'x45'	QUAD	2	#4+8	PRESENCE NON-DELAY	484		1.38		
VT SHOP CTR LT/TH	8B	8'x40'	QUAD	2	#4+8	PRESENCE NON-DELAY	404		1.29		

ALL CALCULATED VALUES ARE AT THE CONTROLLER
MEASURED VALUES MUST BE FILLED IN PRIOR TO TEST PERIOD

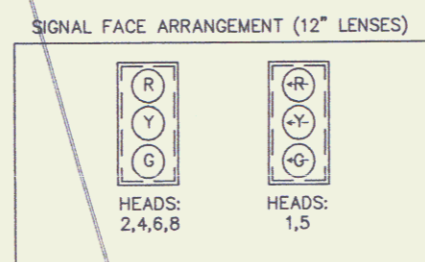


1996 AVERAGE WEEKDAY TRAFFIC
** DHV - 2001 DESIGN HOUR VOLUME/% TRUCKS

AM	OFF	PM	DHV**
19	59	101	115/2
0	0	0	0/2
0	0	0	0/2
41	182	219	241/2

AM	OFF	PM	DHV**
310/1	282	208	87
1031/1	687	821	382
2/1	2	4	4

AM	OFF	PM	DHV**
23	13	54	80/2
452	599	596	807/2
0	2	3	3/2



TIMING AND PHASING

VEHICLE	PHASE 1+5		PHASE 2+5		PHASE 2+6 (DWELL)			PHASE 4+8			
	R/	W/	R/	W/	R/	W/	R/	W/	R/	W/	
MINIMUM	8.4	4.1	4.1	1	25.4	4.2	4.2	4.2	8.4	4.1	4.1
MAXIMUM	8.4	4.1	4.1	1	4.2	4.2	4.2	4.2	8.4	4.1	4.1
VEHICLE	1	1	1	1	26.4	4.2	4.2	4.2	8.4	4.1	4.1
MINIMUM	8.4	4.1	4.1	1	4.2	4.2	4.2	4.2	13.4	4.1	4.1
MAXIMUM	8.4	4.1	4.1	1	4.2	4.2	4.2	4.2	16.4	4.1	4.1
FACE 1	G/Y/R	Y/R	R/R	R/R	R/R	R/R	R/R	R/R	R/R	R/R	R/R
FACE 2	R/R/R	R/R	R/R	R/R	G/Y/R	G/Y/R	R/R	R/R	R/R	R/R	R/R
FACE 4	R/R/R	R/R	R/R	R/R	R/R	R/R	R/R	R/R	R/R	R/R	R/R
FACE 5	G/Y/R	Y/R	R/R	R/R	R/R	R/R	R/R	R/R	R/R	R/R	R/R
FACE 6	R/R/R	R/R	R/R	R/R	G/Y/R	Y/R	R/R	R/R	R/R	R/R	R/R

EXISTING	NEW	LEGEND
□	□	UTILITY POLE
○	○	LUMINAIRE
□	□	WOOD POLE
○	○	STRAIN POLE
□	□	CONTROLLER CABINET
□	□	PULLBOX/JUNCTION BOX
→	→	SIGNAL HEAD
△	△	VEHICLE LOOP DETECTOR
—	—	CONDUIT
—	—	VEHICLE LOOPS
●	●	PEDESTAL POST

LINES SHOWN ON THIS PLAN AS EXISTING PROPERTY LINES (P/L) ARE BELIEVED TO BE ACCURATE BUT SHOULD NOT BE RELIED UPON FOR PURPOSES UNRELATED TO THE STATE OF VERMONT'S ACQUISITION OF LAND AND RIGHTS FOR THIS PROJECT.

THE LUSSIER TRUST
FRANK LUSSIER & GEORGE W. NOSTRAND CO-TRUSTEES-LESSOR
MIDSTATE DODGE LLC-LESSEE

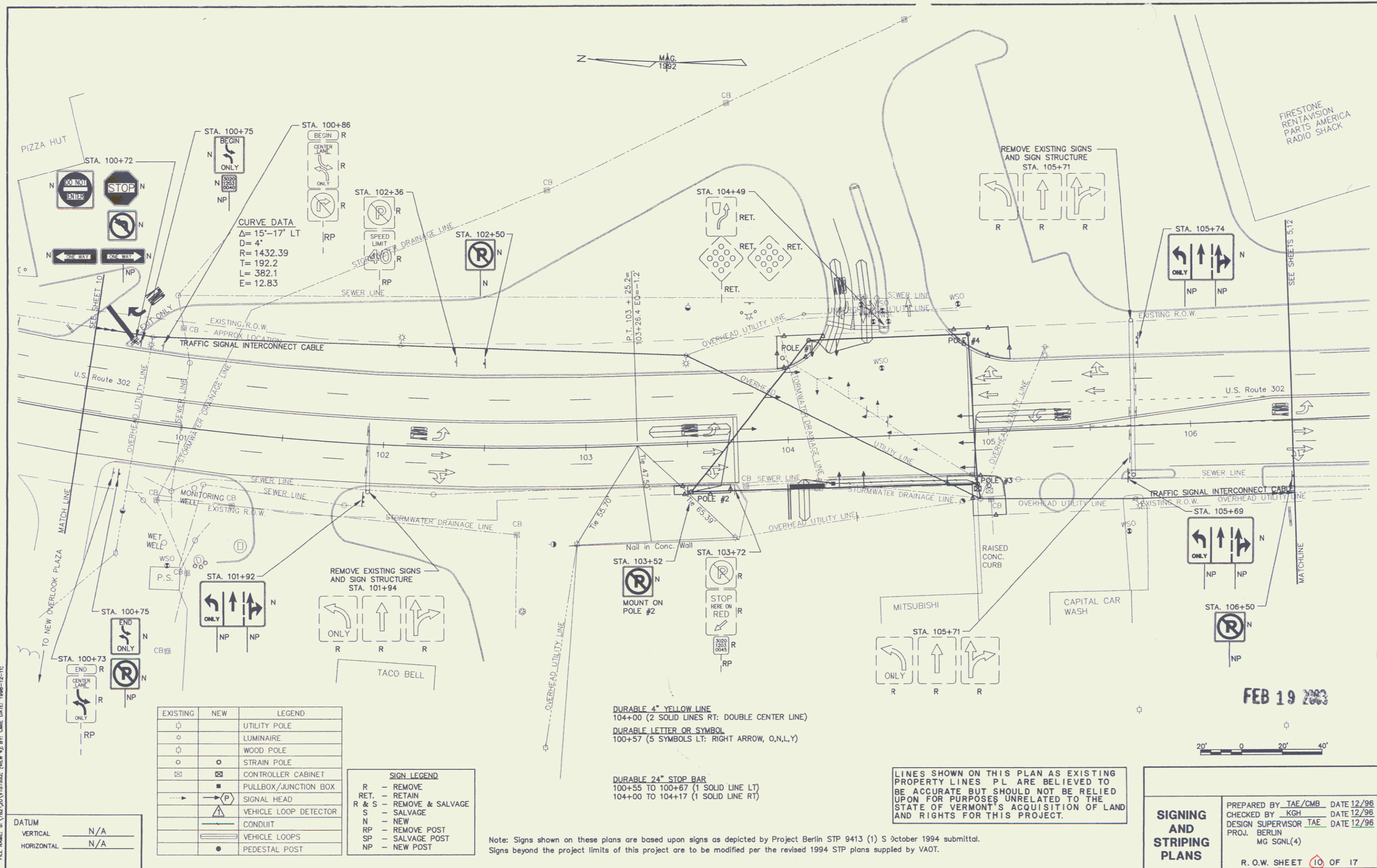
- NOTES:
- REFER TO SHEET 17 FOR COORDINATION DATA, CYCLE LENGTH, AND STANDARD NEMA PHASING INFORMATION.
 - REFER TO THE SIGNING AND STRIPING PLANS FOR THE CONTINUATION OF THE TRAFFIC SIGNAL INTERCONNECT CABLE THROUGH AREAS NOT COVERED BY THE TRAFFIC PLANS.
 - DURING INSTALLATION OF NEW STRAIN POLES, EXISTING POLES MAY NEED GUYING DURING CONSTRUCTION. WHEN REMOVING THE EXISTING STRAIN POLES, THE EXISTING BASES SHALL REMAIN. THE TOP OF THE BASE (1-2) SHALL BE CUT OFF.

TRAFFIC PLANS
(RT 302/VT SH CTR)

PREPARED BY TAE/CMB DATE 12/98
CHECKED BY KGH DATE 12/98
DESIGN SUPERVISOR TAE DATE 12/98
PROJ. BERLIN
MG SGNL(4)
R.O.W. SHEET 9 OF 17

FILE NAME: G:\VTR\20\107122 (NEW) 05.DWG DATE: 1998-12-10

DATUM
VERTICAL N/A
HORIZONTAL N/A



FILE NAME: G:\782\201\201\SSSS (NEW 4) STP.CAD DATE: 1996-12-11

DATUM
 VERTICAL N/A
 HORIZONTAL N/A

EXISTING	NEW	LEGEND
□	□	UTILITY POLE
○	○	LUMINAIRE
□	□	WOOD POLE
○	○	STRAIN POLE
□	□	CONTROLLER CABINET
□	□	PULLBOX/JUNCTION BOX
□	□	SIGNAL HEAD
□	□	VEHICLE LOOP DETECTOR
□	□	CONDUIT
□	□	VEHICLE LOOPS
○	○	PEDESTAL POST

SIGN LEGEND	
R	REMOVE
RET.	RETAIN
R & S	REMOVE & SALVAGE
S	SALVAGE
N	NEW
RP	REMOVE POST
SP	SALVAGE POST
NP	NEW POST

DURABLE 4" YELLOW LINE
 104+00 (2 SOLID LINES RT: DOUBLE CENTER LINE)
 DURABLE LETTER OR SYMBOL
 100+57 (5 SYMBOLS LT: RIGHT ARROW, O,N,L,Y)

DURABLE 24" STOP BAR
 100+55 TO 100+67 (1 SOLID LINE LT)
 104+00 TO 104+17 (1 SOLID LINE RT)

LINES SHOWN ON THIS PLAN AS EXISTING
 PROPERTY LINES P.L. ARE BELIEVED TO
 BE ACCURATE BUT SHOULD NOT BE RELIED
 UPON FOR PURPOSES UNRELATED TO THE
 STATE OF VERMONT'S ACQUISITION OF LAND
 AND RIGHTS FOR THIS PROJECT.

Note: Signs shown on these plans are based upon signs as depicted by Project Berlin STP 9413 (1) S October 1994 submittal.
 Signs beyond the project limits of this project are to be modified per the revised 1994 STP plans supplied by VAOT.

**SIGNING
 AND
 STRIPING
 PLANS**

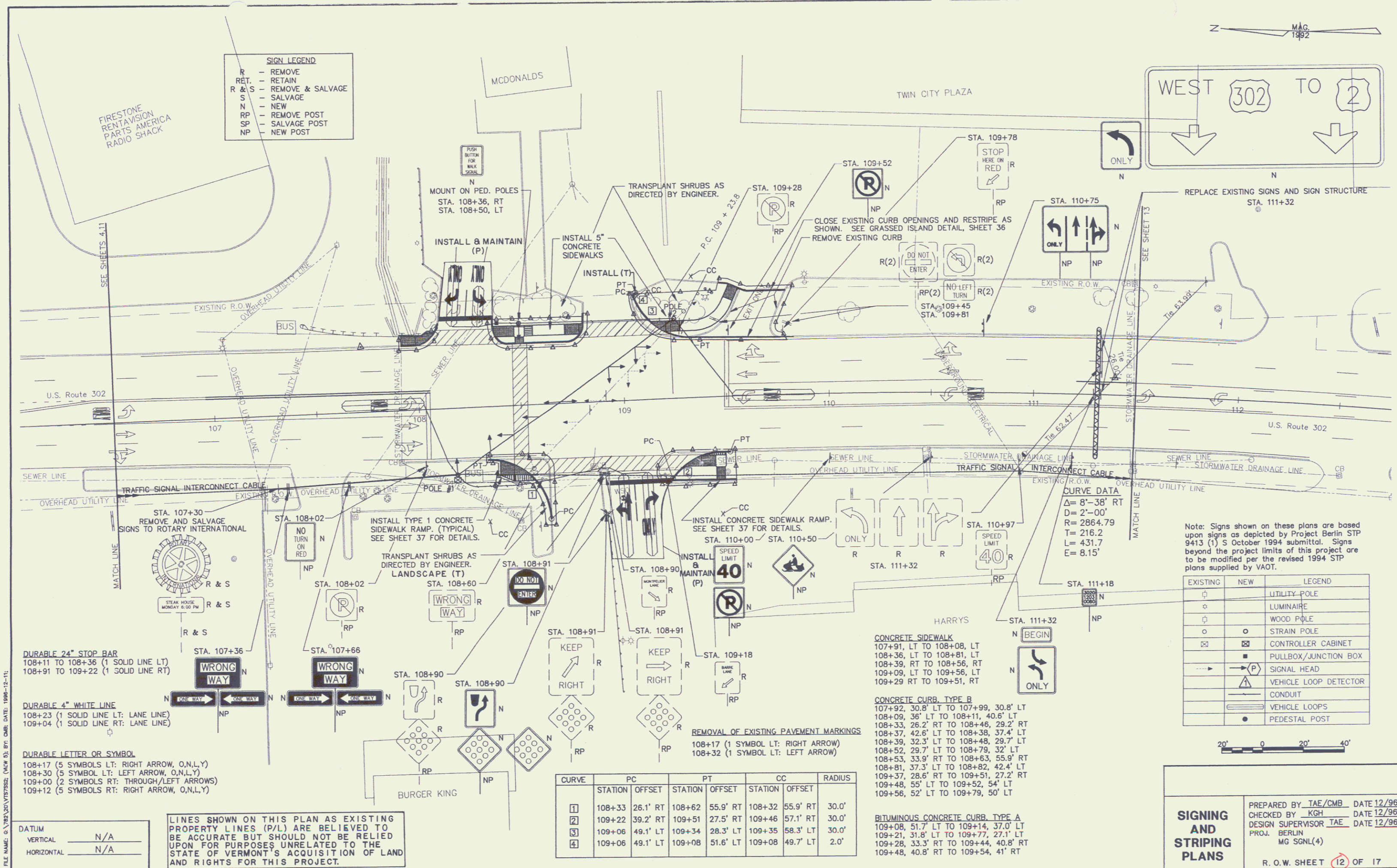
PREPARED BY TAE/CMB DATE 12/96
 CHECKED BY KGH DATE 12/96
 DESIGN SUPERVISOR TAE DATE 12/96
 PROJ. BERLIN
 MG SGNL(4)
 R.O.W. SHEET 10 OF 17

FEB 19 2003



SIGN LEGEND

- R - REMOVE
- RET. - RETAIN
- R & S - REMOVE & SALVAGE
- S - SALVAGE
- N - NEW
- RP - REMOVE POST
- SP - SALVAGE POST
- NP - NEW POST



DURABLE 24" STOP BAR
 108+11 TO 108+36 (1 SOLID LINE LT)
 108+91 TO 109+22 (1 SOLID LINE RT)

DURABLE 4" WHITE LINE
 108+23 (1 SOLID LINE LT: LANE LINE)
 109+04 (1 SOLID LINE RT: LANE LINE)

DURABLE LETTER OR SYMBOL
 108+17 (5 SYMBOLS LT: RIGHT ARROW, O,N,L,Y)
 108+30 (5 SYMBOL LT: LEFT ARROW, O,N,L,Y)
 109+00 (2 SYMBOLS RT: THROUGH/LEFT ARROWS)
 109+12 (5 SYMBOLS RT: RIGHT ARROW, O,N,L,Y)

DATUM

VERTICAL	N/A
HORIZONTAL	N/A

LINES SHOWN ON THIS PLAN AS EXISTING PROPERTY LINES (P/L) ARE BELIEVED TO BE ACCURATE BUT SHOULD NOT BE RELIED UPON FOR PURPOSES UNRELATED TO THE STATE OF VERMONT'S ACQUISITION OF LAND AND RIGHTS FOR THIS PROJECT.

CURVE	PC		PT		CC		RADIUS
	STATION	OFFSET	STATION	OFFSET	STATION	OFFSET	
1	108+33	26.1' RT	108+62	55.9' RT	108+32	55.9' RT	30.0'
2	109+22	39.2' RT	109+51	27.5' RT	109+46	57.1' RT	30.0'
3	109+06	49.1' LT	109+34	28.3' LT	109+35	58.3' LT	30.0'
4	109+06	49.1' LT	109+08	51.6' LT	109+08	49.7' LT	2.0'

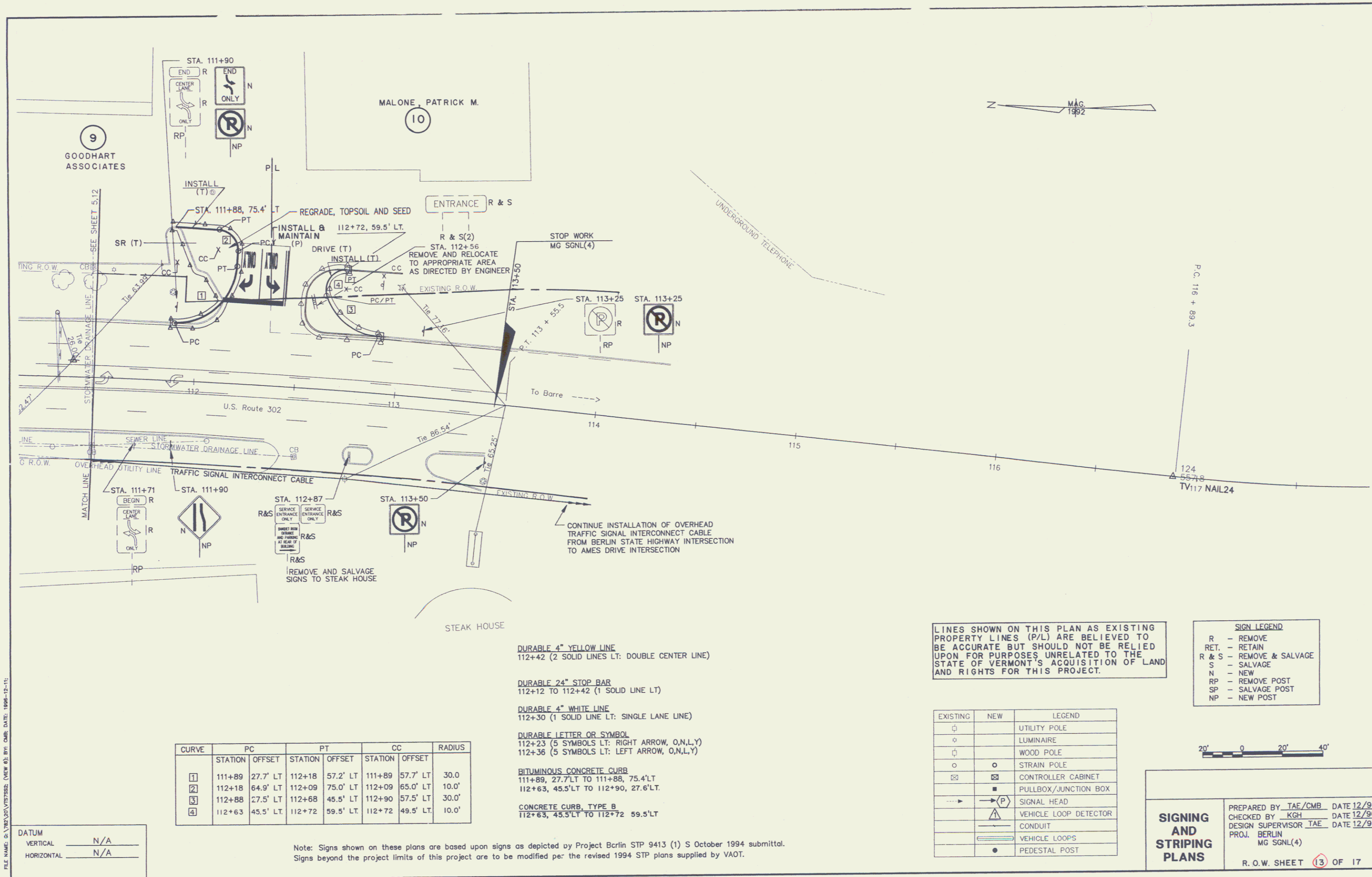
CURVE DATA
 Δ = 8°-38' RT
 D = 2'-00"
 R = 2864.79
 T = 216.2
 L = 431.7
 E = 8.15'

EXISTING	NEW	LEGEND
□	□	UTILITY POLE
○	○	LUMINAIRE
◇	◇	WOOD POLE
○	○	STRAIN POLE
⊠	⊠	CONTROLLER CABINET
▣	▣	PULLBOX/JUNCTION BOX
→	→	SIGNAL HEAD
△	△	VEHICLE LOOP DETECTOR
—	—	CONDUIT
—	—	VEHICLE LOOPS
●	●	PEDESTAL POST

SIGNING AND STRIPING PLANS

PREPARED BY TAE/CMB DATE 12/96
 CHECKED BY KGH DATE 12/96
 DESIGN SUPERVISOR TAE DATE 12/96
 PROJ. BERLIN
 MG SGNL(4)

R.O.W. SHEET 12 OF 17



FILE NAME IS: 1081201/STP/SSR; VIEW 6; BY: CMB; DATE: 10/05-12-11;

DATUM
 VERTICAL N/A
 HORIZONTAL N/A

CURVE	STATION	OFFSET	STATION	OFFSET	STATION	OFFSET	RADIUS
1	111+89	27.7' LT	112+18	57.2' LT	111+89	57.7' LT	30.0'
2	112+18	64.9' LT	112+09	75.0' LT	112+09	65.0' LT	10.0'
3	112+88	27.5' LT	112+68	45.5' LT	112+90	57.5' LT	30.0'
4	112+63	45.5' LT	112+72	59.5' LT	112+72	49.5' LT	10.0'

- DURABLE 4" YELLOW LINE**
112+42 (2 SOLID LINES LT: DOUBLE CENTER LINE)
- DURABLE 24" STOP BAR**
112+12 TO 112+42 (1 SOLID LINE LT)
- DURABLE 4" WHITE LINE**
112+30 (1 SOLID LINE LT: SINGLE LANE LINE)
- DURABLE LETTER OR SYMBOL**
112+23 (5 SYMBOLS LT: RIGHT ARROW, O,N,L,Y)
112+36 (5 SYMBOLS LT: LEFT ARROW, O,N,L,Y)
- BITUMINOUS CONCRETE CURB**
111+89, 27.7' LT TO 111+88, 75.4' LT
112+63, 45.5' LT TO 112+90, 27.6' LT
- CONCRETE CURB, TYPE B**
112+63, 45.5' LT TO 112+72 59.5' LT

Note: Signs shown on these plans are based upon signs as depicted by Project Berlin STP 9413 (1) 5 October 1994 submittal. Signs beyond the project limits of this project are to be modified per the revised 1994 STP plans supplied by VAOT.

LINES SHOWN ON THIS PLAN AS EXISTING PROPERTY LINES (P/L) ARE BELIEVED TO BE ACCURATE BUT SHOULD NOT BE RELIED UPON FOR PURPOSES UNRELATED TO THE STATE OF VERMONT'S ACQUISITION OF LAND AND RIGHTS FOR THIS PROJECT.

SIGN LEGEND
 R - REMOVE
 RET. - RETAIN
 R & S - REMOVE & SALVAGE
 S - SALVAGE
 N - NEW
 RP - REMOVE POST
 SP - SALVAGE POST
 NP - NEW POST

EXISTING	NEW	LEGEND
□	□	UTILITY POLE
○	○	LUMINAIRE
□	□	WOOD POLE
○	○	STRAIN POLE
□	□	CONTROLLER CABINET
□	□	PULLBOX/JUNCTION BOX
→	→	SIGNAL HEAD
△	△	VEHICLE LOOP DETECTOR
—	—	CONDUIT
—	—	VEHICLE LOOPS
●	●	PEDESTAL POST



SIGNING AND STRIPING PLANS

PREPARED BY TAE/CMB DATE 12/96
 CHECKED BY KGH DATE 12/96
 DESIGN SUPERVISOR TAE DATE 12/96
 PROJ. BERLIN
 MG SGNL(4)

R. O. W. SHEET 13 OF 17

FEB 19 2003 13

FILE NAME: 6:\TRV\10\10151015.DWG (NEW); BY: CMB; DATE: 1998-12-11

DATUM
 VERTICAL N/A
 HORIZONTAL N/A

Note: Signs shown on these plans are based upon signs as depicted by Project Berlin STP 9413 (1) S October 1994 submittal.
 Signs beyond the project limits of this project are to be modified per the revised 1994 STP plans supplied by VAOT.

LINES SHOWN ON THIS PLAN AS EXISTING PROPERTY LINES (P/L) ARE BELIEVED TO BE ACCURATE BUT SHOULD NOT BE RELIED UPON FOR PURPOSES UNRELATED TO THE STATE OF VERMONT'S ACQUISITION OF LAND AND RIGHTS FOR THIS PROJECT.

SIGN LEGEND
 R - REMOVE
 RET. - RETAIN
 R & S - REMOVE & SALVAGE
 S - SALVAGE
 N - NEW
 RP - REMOVE POST
 SP - SALVAGE POST
 NP - NEW POST

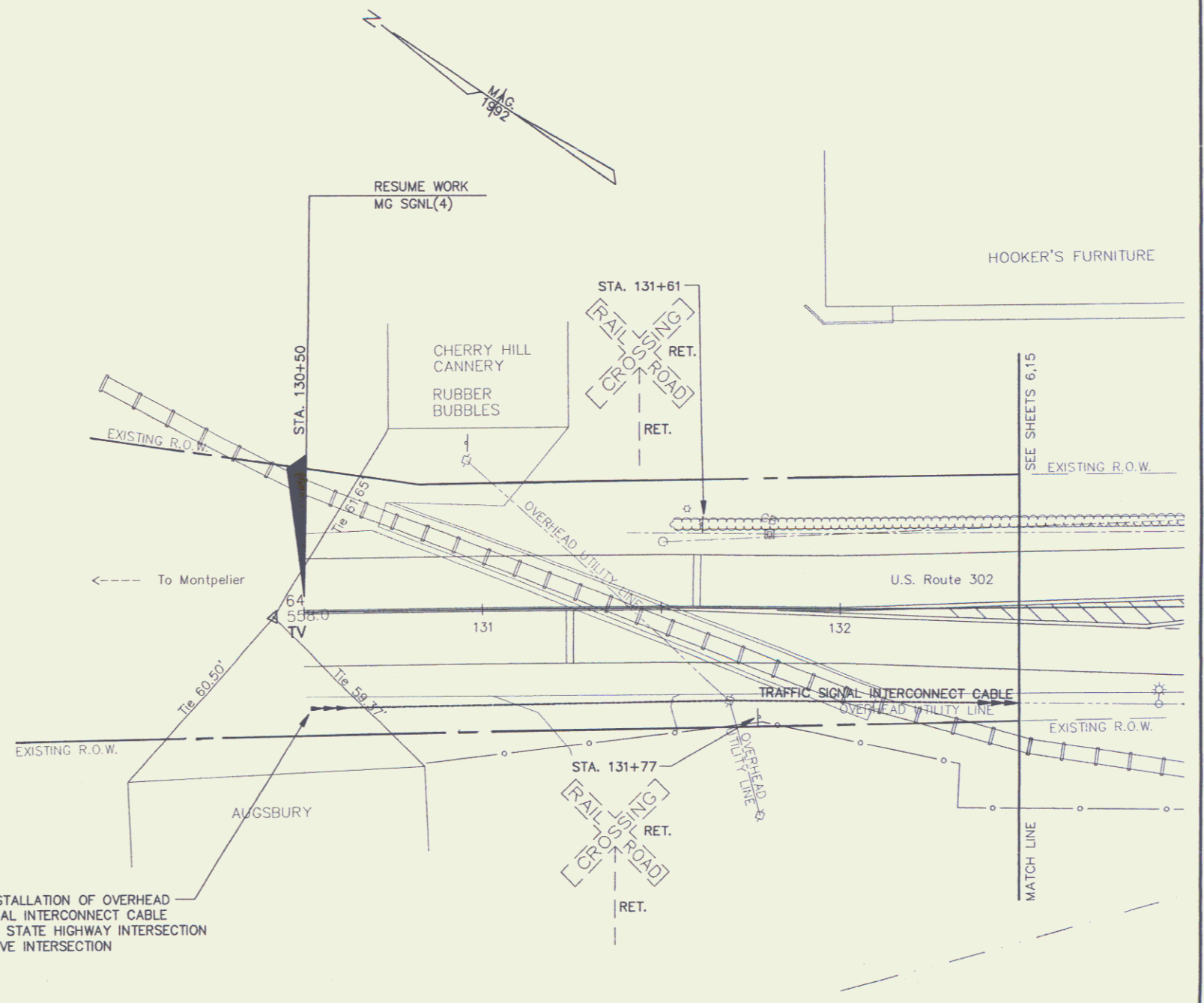
EXISTING	NEW	LEGEND
⊠		UTILITY POLE
⊠		LUMINAIRE
⊠		WOOD POLE
○	⊠	STRAIN POLE
⊠	⊠	CONTROLLER CABINET
⊠	⊠	PULLBOX/JUNCTION BOX
→	→(P)	SIGNAL HEAD
⊠	⊠	VEHICLE LOOP DETECTOR
—	—	CONDUIT
—	—	VEHICLE LOOPS
●	●	PEDESTAL POST

FEB 19 2003



SIGNING AND STRIPING PLANS

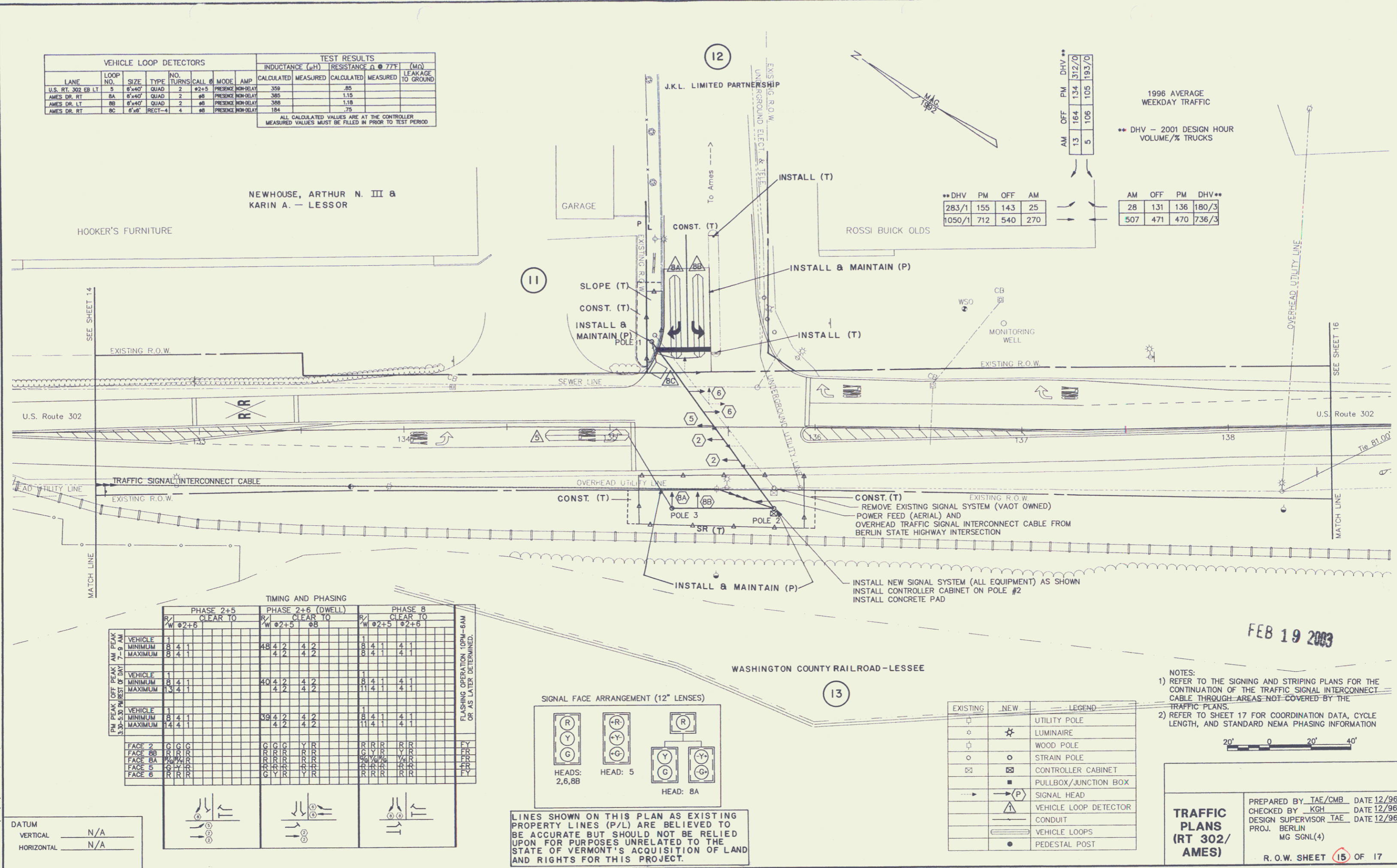
PREPARED BY TAE/CMB DATE 12/96
 CHECKED BY KGH DATE 12/96
 DESIGN SUPERVISOR TAE DATE 12/96
 PROJ. BERLIN
 MG SGNL(4)
 R. O. W. SHEET 14 OF 17



CONTINUE INSTALLATION OF OVERHEAD TRAFFIC SIGNAL INTERCONNECT CABLE FROM BERLIN STATE HIGHWAY INTERSECTION TO AMES DRIVE INTERSECTION

VEHICLE LOOP DETECTORS										TEST RESULTS		
LANE	NO.	SIZE	TYPE	NO. TURNS	CALL #	MODE	AMP	INDUCTANCE (μH)	RESISTANCE Ω @ 77°F	(MΩ)	LEAKAGE TO GROUND	
								CALCULATED	MEASURED	CALCULATED	MEASURED	
U.S. RT. 302 EB LT	5	6"x40"	QUAD	2	#2+5	PRESENCE NON-DELAY	350		85			
AMES DR. RT	8A	6"x40"	QUAD	2	#8	PRESENCE NON-DELAY	385		1.15			
AMES DR. LT	8B	6"x40"	QUAD	2	#8	PRESENCE NON-DELAY	388		1.18			
AMES DR. RT	8C	6"x8"	RECT-4	4	#8	PRESENCE NON-DELAY	184		.75			

ALL CALCULATED VALUES ARE AT THE CONTROLLER
MEASURED VALUES MUST BE FILLED IN PRIOR TO TEST PERIOD



1996 AVERAGE WEEKDAY TRAFFIC

** DHV - 2001 DESIGN HOUR VOLUME/% TRUCKS

AM	OFF	PM	DHV**
13	164	134	872/0
5	105	105	183/0

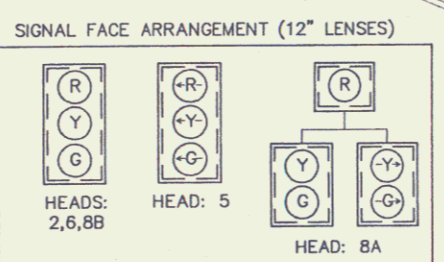
AM	OFF	PM	DHV**
283/1	155	143	25
1050/1	712	540	270

AM	OFF	PM	DHV**
28	131	136	180/3
507	471	470	736/3

TIMING AND PHASING

VEHICLE	PHASE 2+5 CLEAR TO		PHASE 2+6 (DWELL)		PHASE 8 CLEAR TO	
	R/W	#2+5	R/W	#2+5	R/W	#2+5
VEHICLE	1				1	
MINIMUM	8	4.1	4.2	4.2	8	4.1
MAXIMUM	8	4.1	4.2	4.2	8	4.1
VEHICLE	1				1	
MINIMUM	8	4.1	4.2	4.2	8	4.1
MAXIMUM	13	4.1	4.2	4.2	11	4.1
FACE 2	C	C	G	G	R	R
FACE 8B	R	R	R	R	C	Y
FACE 8A	R	R	R	R	C	Y
FACE 5	C	C	C	C	R	R
FACE 6	R	R	R	R	R	R

FLASHING OPERATION 10PM-6AM OR AS LATER DETERMINED.



LINES SHOWN ON THIS PLAN AS EXISTING PROPERTY LINES (P/L) ARE BELIEVED TO BE ACCURATE BUT SHOULD NOT BE RELIED UPON FOR PURPOSES UNRELATED TO THE STATE OF VERMONT'S ACQUISITION OF LAND AND RIGHTS FOR THIS PROJECT.

EXISTING	NEW	LEGEND
○	○	UTILITY POLE
○	★	LUMINAIRE
○	○	WOOD POLE
○	○	STRAIN POLE
□	□	CONTROLLER CABINET
□	□	PULLBOX/JUNCTION BOX
→	→	SIGNAL HEAD
△	△	VEHICLE LOOP DETECTOR
—	—	CONDUIT
—	—	VEHICLE LOOPS
●	●	PEDESTAL POST

NOTES:

- REFER TO THE SIGNING AND STRIPING PLANS FOR THE CONTINUATION OF THE TRAFFIC SIGNAL INTERCONNECT CABLE THROUGH AREAS NOT COVERED BY THE TRAFFIC PLANS.
- REFER TO SHEET 17 FOR COORDINATION DATA, CYCLE LENGTH, AND STANDARD NEMA PHASING INFORMATION

20' 0 20' 40'

TRAFFIC PLANS (RT 302/AMES)

PREPARED BY TAE/CMB DATE 12/96
 CHECKED BY KGH DATE 12/96
 DESIGN SUPERVISOR TAE DATE 12/96
 PROJ. BERLIN
 MG SGNL(4)

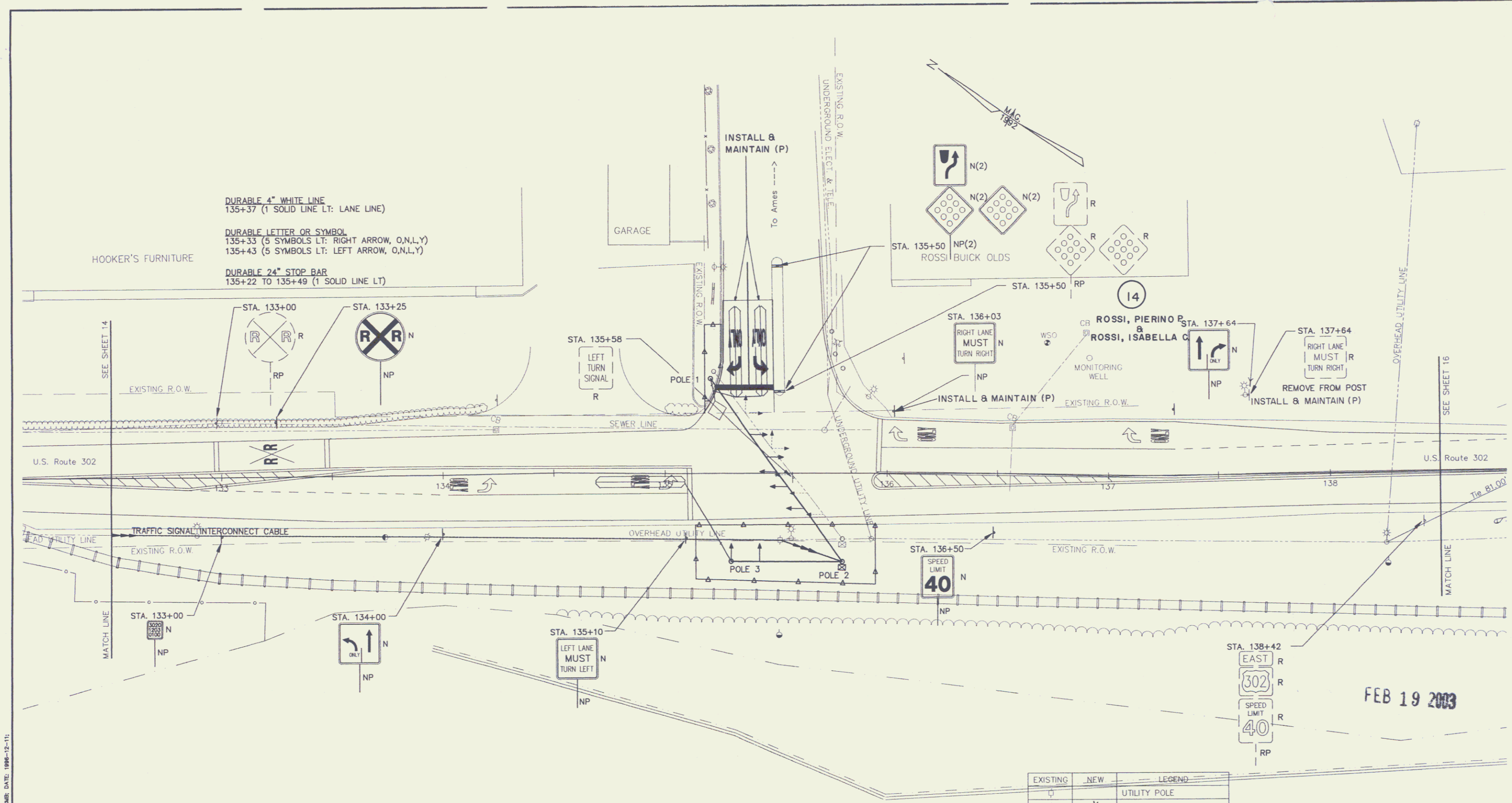
R. O.W. SHEET 15 OF 17

FILE NAME: G:\VTR\20\157772 (NEW) BY: CMB DATE: 1996-12-10

DATUM

VERTICAL	N/A
HORIZONTAL	N/A

15



DURABLE 4" WHITE LINE
135+37 (1 SOLID LINE LT: LANE LINE)

DURABLE LETTER OR SYMBOL
135+33 (5 SYMBOLS LT: RIGHT ARROW, O,N,L,Y)
135+43 (5 SYMBOLS LT: LEFT ARROW, O,N,L,Y)

DURABLE 24" STOP BAR
135+22 TO 135+49 (1 SOLID LINE LT)

FILE NAME: 6:124\UN\1251252 (NEW).B; BY: CMB; DATE: 1998-12-11;

DATUM	
VERTICAL	N/A
HORIZONTAL	N/A

LINES SHOWN ON THIS PLAN AS EXISTING PROPERTY LINES (P/L) ARE BELIEVED TO BE ACCURATE BUT SHOULD NOT BE RELIED UPON FOR PURPOSES UNRELATED TO THE STATE OF VERMONT'S ACQUISITION OF LAND AND RIGHTS FOR THIS PROJECT.

SIGN LEGEND	
R	- REMOVE
RET.	- RETAIN
R & S	- REMOVE & SALVAGE
S	- SALVAGE
N	- NEW
RP	- REMOVE POST
SP	- SALVAGE POST
NP	- NEW POST

Note: Signs shown on these plans are based upon signs as depicted by Project Berlin STP 9413 (1) S October 1994 submittal. Signs beyond the project limits of this project are to be modified per the revised 1994 STP plans supplied by VAOT.

EXISTING	NEW	LEGEND
⊕	⊕	UTILITY POLE
⊙	⊙	LUMINAIRE
⊕	⊕	WOOD POLE
⊙	⊙	STRAIN POLE
⊠	⊠	CONTROLLER CABINET
⊠	⊠	PULLBOX/JUNCTION BOX
→	→(P)	SIGNAL HEAD
⊠	⊠	VEHICLE LOOP DETECTOR
—	—	CONDUIT
—	—	VEHICLE LOOPS
●	●	PEDESTAL POST

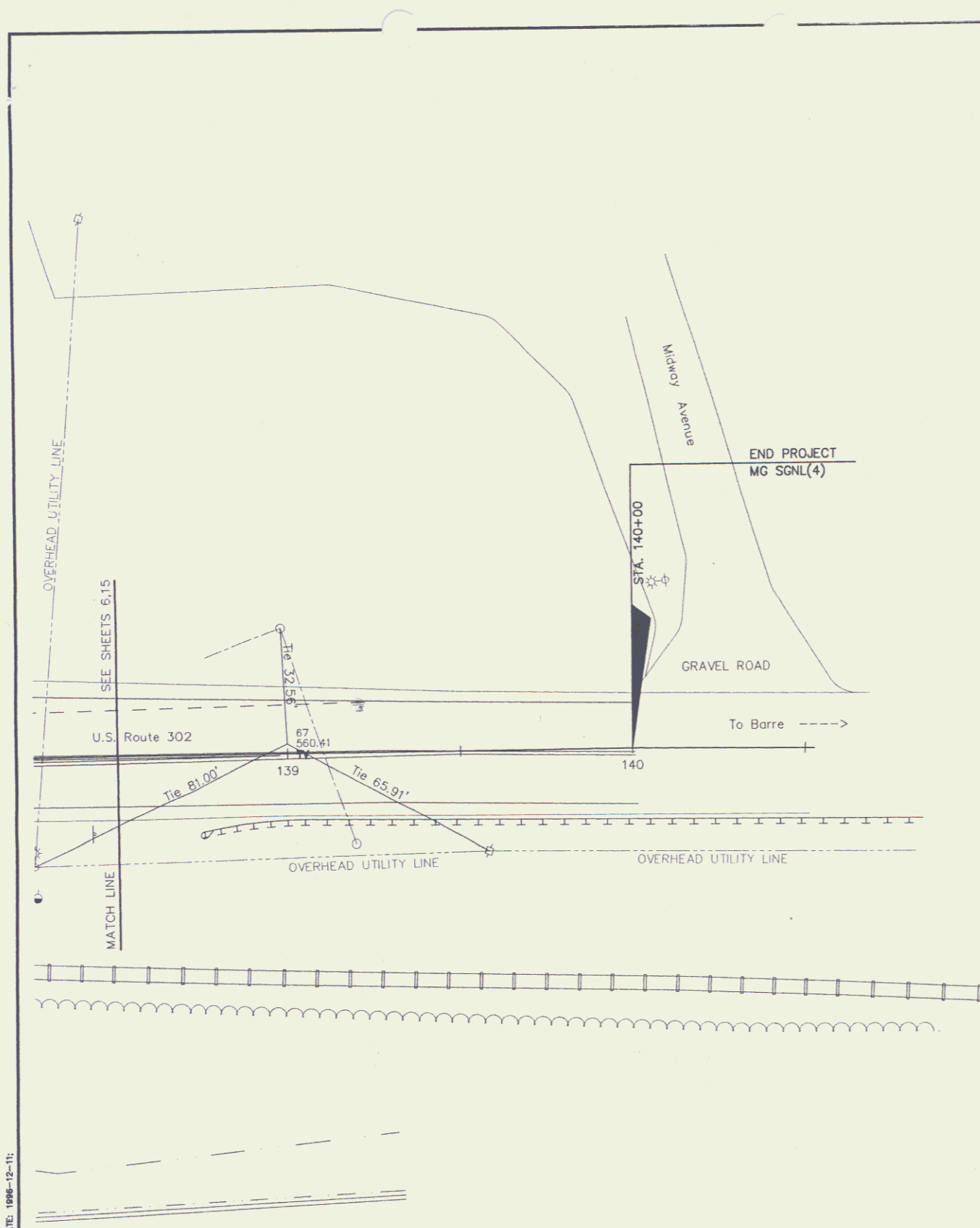


SIGNING AND STRIPING PLANS

PREPARED BY TAE/CMB DATE 12/96
 CHECKED BY KGH DATE 12/96
 DESIGN SUPERVISOR TAE DATE 12/96
 PROJ. BERLIN
 MG SGNL(4)

R. O. W. SHEET 16 OF 17

FEB 19 2003



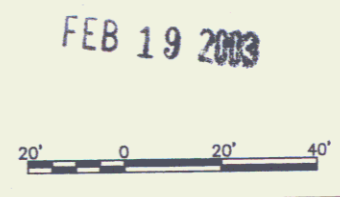
FILE NAME: G:\VTR\01\17\171022.DWG DATE: 10/04/94 10:15:11

DATUM	
VERTICAL	N/A
HORIZONTAL	N/A

Note: Signs shown on these plans are based upon signs as depicted by Project Berlin STP 9413 (1) S October 1994 submittal. Signs beyond the project limits of this project are to be modified per the revised 1994 STP plans supplied by VAOT.

LINES SHOWN ON THIS PLAN AS EXISTING PROPERTY LINES (P/L) ARE BELIEVED TO BE ACCURATE BUT SHOULD NOT BE RELIED UPON FOR PURPOSES UNRELATED TO THE STATE OF VERMONT'S ACQUISITION OF LAND AND RIGHTS FOR THIS PROJECT.

EXISTING	NEW	LEGEND
⊥		UTILITY POLE
○		LUMINAIRE
⊥		WOOD POLE
○	○	STRAIN POLE
⊥	⊥	CONTROLLER CABINET
	■	PULLBOX/JUNCTION BOX
→	→(P)	SIGNAL HEAD
	△	VEHICLE LOOP DETECTOR
	—	CONDUIT
	⊃	VEHICLE LOOPS
	●	PEDESTAL POST



SIGNING AND STRIPING PLANS	PREPARED BY TAE/CMB DATE 12/96
	CHECKED BY KGH DATE 12/96
	DESIGN SUPERVISOR TAE DATE 12/96
	PROJ. BERLIN MG SGNL(4)
R.O.W. SHEET 17 OF 17	