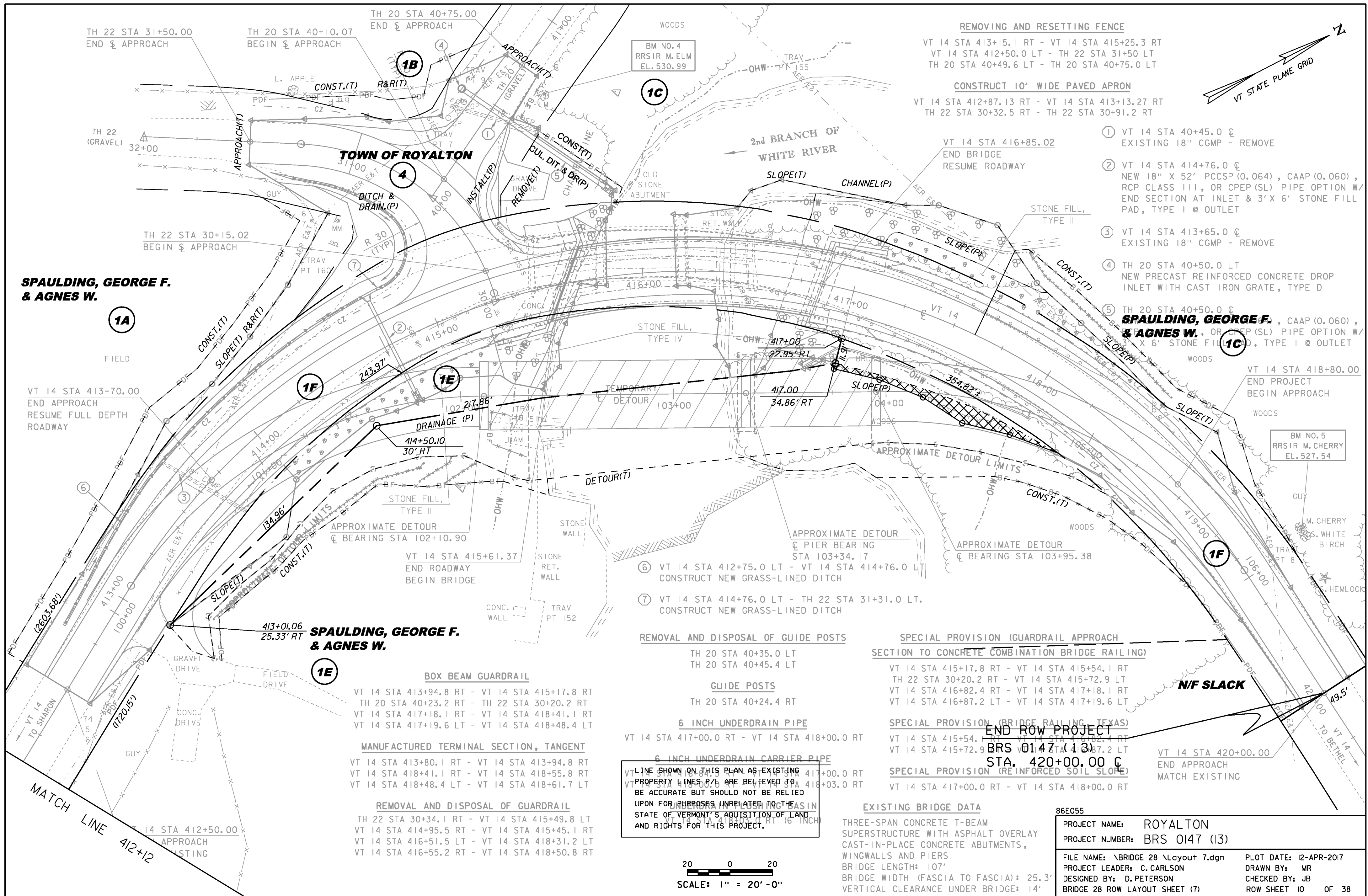


Original Drawing - Ink on Polymer meeting the requirements of 27 V.S.A. § 1403



SPAULDING, GEORGE F. & AGNES W.

SPAULDING, GEORGE F. & AGNES W.

SPAULDING, GEORGE F. & AGNES W.

REMOVING AND RESETTING FENCE
 VT 14 STA 413+15.1 RT - VT 14 STA 415+25.3 RT
 VT 14 STA 412+50.0 LT - TH 22 STA 31+50 LT
 TH 20 STA 40+49.6 LT - TH 20 STA 40+75.0 LT

CONSTRUCT 10' WIDE PAVED APRON
 VT 14 STA 412+87.13 RT - VT 14 STA 413+13.27 RT
 TH 22 STA 30+32.5 RT - TH 22 STA 30+91.2 RT

- ① VT 14 STA 40+45.0 @ EXISTING 18" CGMP - REMOVE
- ② VT 14 STA 414+76.0 @ NEW 18" X 52' PCCSP (0.064), CAAP (0.060), RCP CLASS III, OR CPEP (SL) PIPE OPTION W/ END SECTION AT INLET & 3' X 6' STONE FILL PAD, TYPE I @ OUTLET
- ③ VT 14 STA 413+65.0 @ EXISTING 18" CGMP - REMOVE
- ④ TH 20 STA 40+50.0 LT NEW PRECAST REINFORCED CONCRETE DROP INLET WITH CAST IRON GRATE, TYPE D
- ⑤ TH 20 STA 40+50.0 @ **SPAULDING, GEORGE F. & AGNES W.**, CAAP (0.060), RCP CLASS III, OR CPEP (SL) PIPE OPTION W/ 3' X 6' STONE FILL PAD, TYPE I @ OUTLET

- ⑥ VT 14 STA 412+75.0 LT - VT 14 STA 414+76.0 LT CONSTRUCT NEW GRASS-LINED DITCH
- ⑦ VT 14 STA 414+76.0 LT - TH 22 STA 31+31.0 LT. CONSTRUCT NEW GRASS-LINED DITCH

REMOVAL AND DISPOSAL OF GUIDE POSTS
 TH 20 STA 40+35.0 LT
 TH 20 STA 40+45.4 LT

GUIDE POSTS
 TH 20 STA 40+24.4 RT

6 INCH UNDERDRAIN PIPE
 VT 14 STA 417+00.0 RT - VT 14 STA 418+00.0 RT

6 INCH UNDERDRAIN CARRIER PIPE
 VT 14 STA 417+00.0 RT - VT 14 STA 418+00.0 RT

LINE SHOWN ON THIS PLAN AS EXISTING PROPERTY LINES ARE BELIEVED TO BE ACCURATE BUT SHOULD NOT BE RELIED UPON FOR PURPOSES UNRELATED TO THE STATE OF VERMONT'S ACQUISITION OF LAND AND RIGHTS FOR THIS PROJECT.

SPECIAL PROVISION (GUARDRAIL APPROACH SECTION TO CONCRETE COMBINATION BRIDGE RAILING)
 VT 14 STA 415+17.8 RT - VT 14 STA 415+54.1 RT
 TH 22 STA 30+20.2 RT - VT 14 STA 415+72.9 LT
 VT 14 STA 416+82.4 RT - VT 14 STA 417+18.1 RT
 VT 14 STA 416+87.2 LT - VT 14 STA 417+19.6 LT

SPECIAL PROVISION (BRIDGE RAILING - TEXAS)
 VT 14 STA 415+54.1 RT - VT 14 STA 416+82.4 RT
 VT 14 STA 415+72.9 LT - VT 14 STA 416+87.2 LT

SPECIAL PROVISION (REINFORCED SOIL SLOPE)
 VT 14 STA 417+00.0 RT - VT 14 STA 418+00.0 RT

BOX BEAM GUARDRAIL
 VT 14 STA 413+94.8 RT - VT 14 STA 415+17.8 RT
 TH 20 STA 40+23.2 RT - TH 22 STA 30+20.2 RT
 VT 14 STA 417+18.1 RT - VT 14 STA 418+41.1 RT
 VT 14 STA 417+19.6 LT - VT 14 STA 418+48.4 LT

MANUFACTURED TERMINAL SECTION, TANGENT
 VT 14 STA 413+80.1 RT - VT 14 STA 413+94.8 RT
 VT 14 STA 418+41.1 RT - VT 14 STA 418+55.8 RT
 VT 14 STA 418+48.4 LT - VT 14 STA 418+61.7 LT

REMOVAL AND DISPOSAL OF GUARDRAIL
 TH 22 STA 30+34.1 RT - VT 14 STA 415+49.8 LT
 VT 14 STA 414+95.5 RT - VT 14 STA 415+45.1 RT
 VT 14 STA 416+51.5 LT - VT 14 STA 418+31.2 LT
 VT 14 STA 416+55.2 RT - VT 14 STA 418+50.8 RT

EXISTING BRIDGE DATA
 THREE-SPAN CONCRETE T-BEAM SUPERSTRUCTURE WITH ASPHALT OVERLAY CAST-IN-PLACE CONCRETE ABUTMENTS, WINGWALLS AND PIERS
 BRIDGE LENGTH: 107'
 BRIDGE WIDTH (FASCIA TO FASCIA): 25.3'
 VERTICAL CLEARANCE UNDER BRIDGE: 14'

86E055	PROJECT NAME: ROYALTON	FILE NAME: \BRIDGE 28 \Layout 7.dgn	PLOT DATE: 12-APR-2017
	PROJECT NUMBER: BRS 0147 (13)	PROJECT LEADER: C. CARLSON	DRAWN BY: MR
		DESIGNED BY: D. PETERSON	CHECKED BY: JB
		BRIDGE 28 ROW LAYOUT SHEET (7)	ROW SHEET 10 OF 38

20 0 20
 SCALE: 1" = 20'-0"