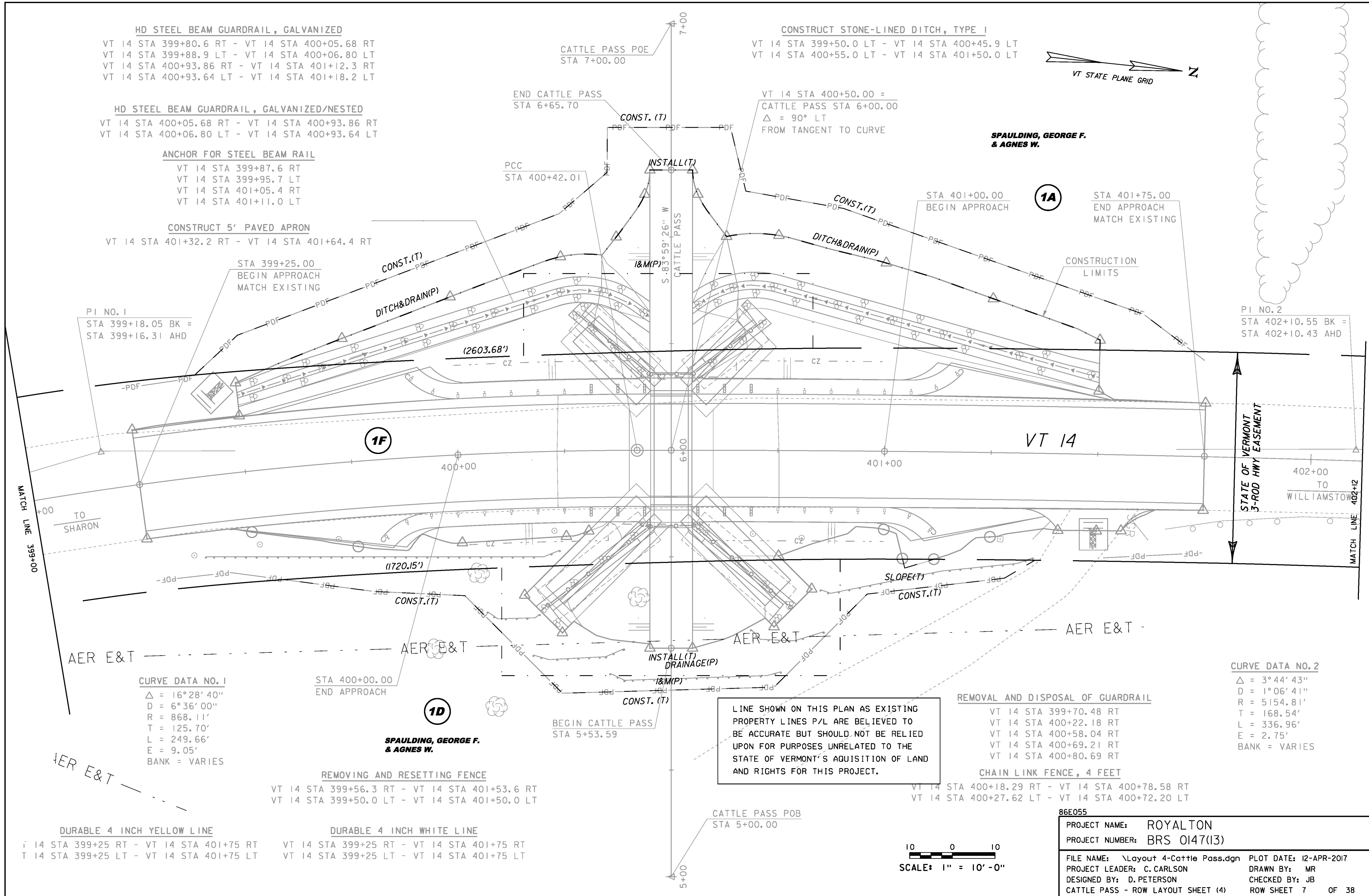


Original Drawing - Ink on Polymer meeting the requirements of 27 V.S.A. § 1403



HD STEEL BEAM GUARDRAIL, GALVANIZED
 VT 14 STA 399+80.6 RT - VT 14 STA 400+05.68 RT
 VT 14 STA 399+88.9 LT - VT 14 STA 400+06.80 LT
 VT 14 STA 400+93.86 RT - VT 14 STA 401+12.3 RT
 VT 14 STA 400+93.64 LT - VT 14 STA 401+18.2 LT

HD STEEL BEAM GUARDRAIL, GALVANIZED/NESTED
 VT 14 STA 400+05.68 RT - VT 14 STA 400+93.86 RT
 VT 14 STA 400+06.80 LT - VT 14 STA 400+93.64 LT

ANCHOR FOR STEEL BEAM RAIL
 VT 14 STA 399+87.6 RT
 VT 14 STA 399+95.7 LT
 VT 14 STA 401+05.4 RT
 VT 14 STA 401+11.0 LT

CONSTRUCT 5' PAVED APRON
 VT 14 STA 401+32.2 RT - VT 14 STA 401+64.4 RT

CONSTRUCT STONE-LINED DITCH, TYPE I
 VT 14 STA 399+50.0 LT - VT 14 STA 400+45.9 LT
 VT 14 STA 400+55.0 LT - VT 14 STA 401+50.0 LT



SPAULDING, GEORGE F. & AGNES W.

PI NO. 1
 STA 399+18.05 BK =
 STA 399+16.31 AHD

PI NO. 2
 STA 402+10.55 BK =
 STA 402+10.43 AHD

CURVE DATA NO. 1
 $\Delta = 16^\circ 28' 40''$
 $D = 6^\circ 36' 00''$
 $R = 868.11'$
 $T = 125.70'$
 $L = 249.66'$
 $E = 9.05'$
 BANK = VARIES

CURVE DATA NO. 2
 $\Delta = 3^\circ 44' 43''$
 $D = 1^\circ 06' 41''$
 $R = 5154.81'$
 $T = 168.54'$
 $L = 336.96'$
 $E = 2.75'$
 BANK = VARIES

LINE SHOWN ON THIS PLAN AS EXISTING
 PROPERTY LINES P/L ARE BELIEVED TO
 BE ACCURATE BUT SHOULD NOT BE RELIED
 UPON FOR PURPOSES UNRELATED TO THE
 STATE OF VERMONT'S ACQUISITION OF LAND
 AND RIGHTS FOR THIS PROJECT.

REMOVAL AND DISPOSAL OF GUARDRAIL

VT 14 STA 399+70.48 RT
 VT 14 STA 400+22.18 RT
 VT 14 STA 400+58.04 RT
 VT 14 STA 400+69.21 RT
 VT 14 STA 400+80.69 RT

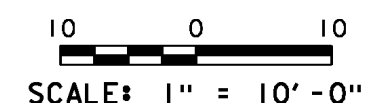
CHAIN LINK FENCE, 4 FEET

VT 14 STA 400+18.29 RT - VT 14 STA 400+78.58 RT
 VT 14 STA 400+27.62 LT - VT 14 STA 400+72.20 LT

REMOVING AND RESETTING FENCE
 VT 14 STA 399+56.3 RT - VT 14 STA 401+53.6 RT
 VT 14 STA 399+50.0 LT - VT 14 STA 401+50.0 LT

DURABLE 4 INCH YELLOW LINE
 RT 14 STA 399+25 RT - VT 14 STA 401+75 RT
 LT 14 STA 399+25 LT - VT 14 STA 401+75 LT

DURABLE 4 INCH WHITE LINE
 RT 14 STA 399+25 RT - VT 14 STA 401+75 RT
 LT 14 STA 399+25 LT - VT 14 STA 401+75 LT



86E055	
PROJECT NAME:	ROYALTON
PROJECT NUMBER:	BRS 0147(I3)
FILE NAME:	\Layout 4-Cattle Pass.dgn
PROJECT LEADER:	C. CARLSON
DESIGNED BY:	D. PETERSON
CATTLE PASS - ROW LAYOUT SHEET (4)	
PLOT DATE:	12-APR-2017
DRAWN BY:	MR
CHECKED BY:	JB
ROW SHEET	7 OF 38