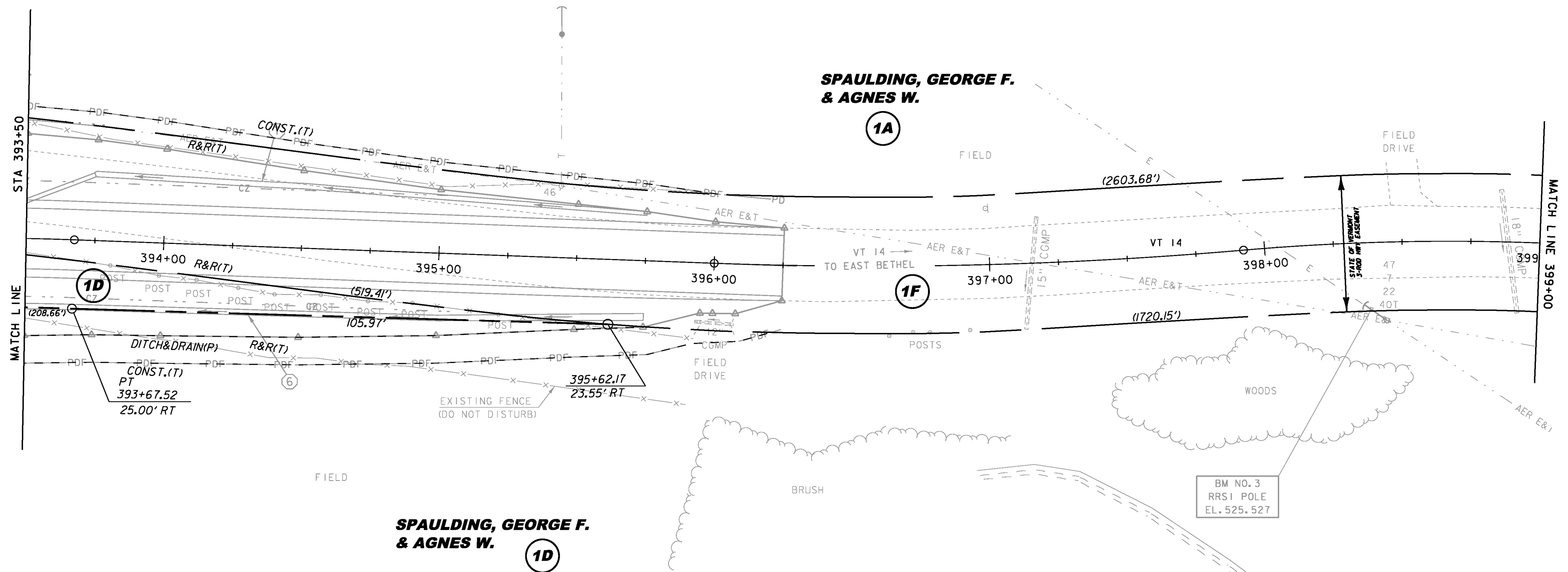
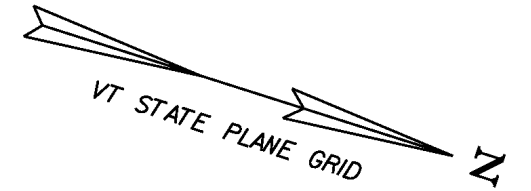


Original Drawing – Ink on Polymer meeting the requirements of 27 V.S.A. § 1403

CONSTRUCT 5' WIDE PAVED APRON
 VT 14 STA 395+82.2 RT - VT 14 STA 396+21.4 RT

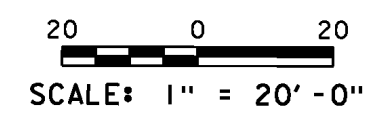
REMOVAL AND DISPOSAL OF GUIDE POSTS
 VT 14 STA 393+80.9 RT
 VT 14 STA 393+98.7 RT
 VT 14 STA 394+12.4 RT
 VT 14 STA 394+27.6 RT
 VT 14 STA 394+40.9 RT
 VT 14 STA 394+57.7 RT
 VT 14 STA 394+74.9 RT
 VT 14 STA 394+91.0 RT
 VT 14 STA 395+22.4 RT

REMOVING AND RESETTING FENCE
 VT 14 STA 393+50.0 RT - VT 14 STA 394+73.3 RT
 VT 14 STA 393+50.0 RT - VT 14 STA 395+93.4 RT
 VT 14 STA 393+50.0 RT - VT 14 STA 395+95.7 LT



- ⑥ VT 14 STA 393+50.0 RT - VT 14 STA 395+75.0 RT
CONSTRUCT NEW GRASS-LINED DITCH
- ⑦ VT 14 STA 393+75.0 LT - VT 14 STA 395+75.0 LT
CONSTRUCT NEW GRASS-LINED DITCH

LINE SHOWN ON THIS PLAN AS EXISTING PROPERTY LINES P/L ARE BELIEVED TO BE ACCURATE BUT SHOULD NOT BE RELIED UPON FOR PURPOSES UNRELATED TO THE STATE OF VERMONT'S ACQUISITION OF LAND AND RIGHTS FOR THIS PROJECT.



86E055	
PROJECT NAME:	ROYALTON
PROJECT NUMBER:	BRS 0147(I3)
FILE NAME:	BRIDGE 27 \Layout 3.dgn
PROJECT LEADER:	C. CARLSON
DESIGNED BY:	D. PETERSON
BRIDGE 27 ROW LAYOUT SHEET (3)	
PLOT DATE:	12-APR-2017
DRAWN BY:	MR
CHECKED BY:	JB
ROW SHEET	6 OF 38