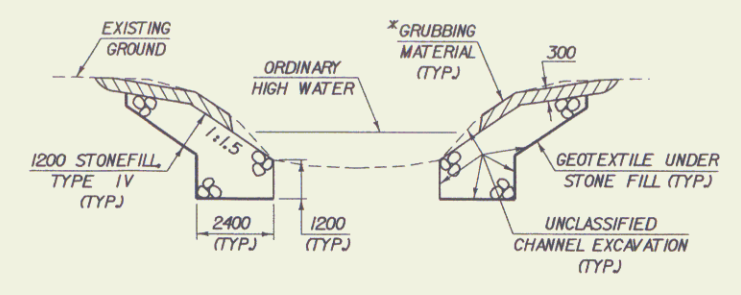
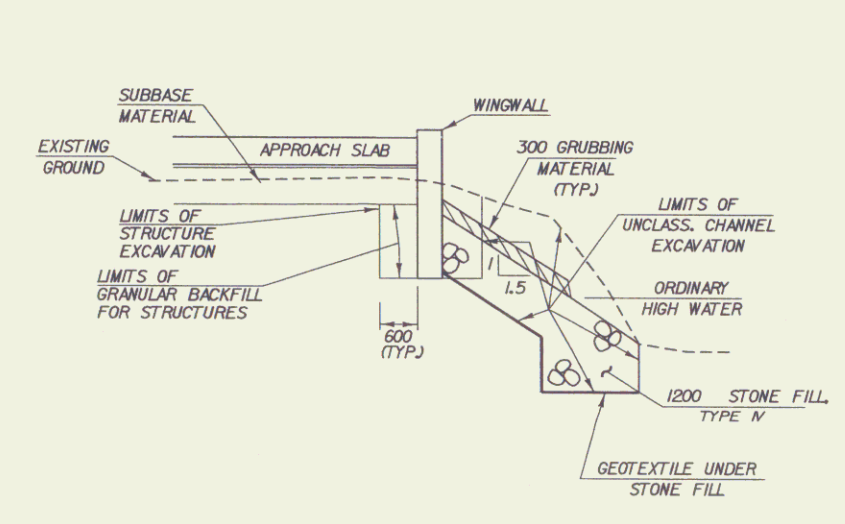


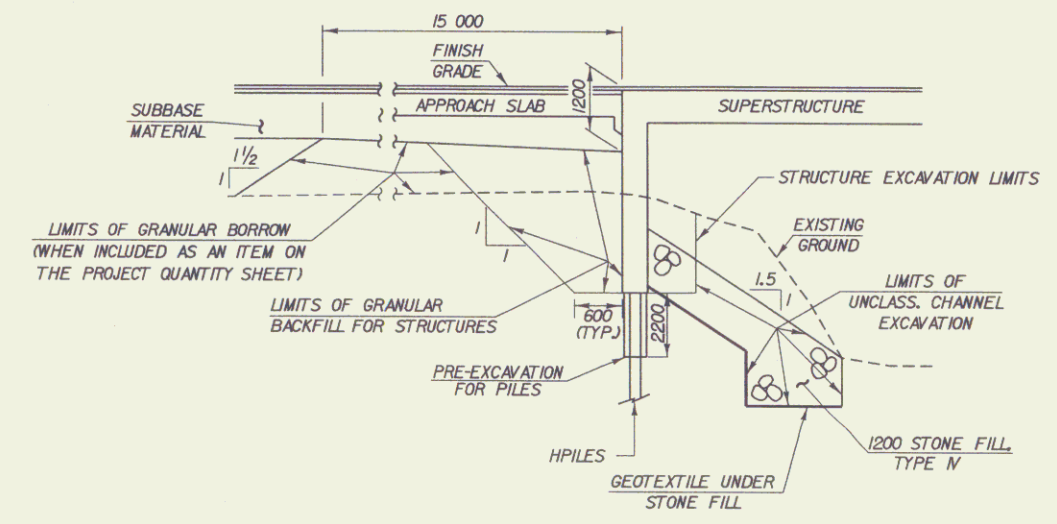
BRIDGE TYPICAL SECTION
 0 1 2 3 4
 SCALE = 1:40



TYPICAL CHANNEL SECTION
 (NOT TO SCALE)
 * GRUBBING MATERIAL SHALL NOT BE PLACED ON THE STONE FILL IN THE AREA UNDER THE BRIDGE. WHENEVER CHANNEL SLOPE INTERSECTS ROADWAY SUBBASE, GRUBBING MATERIAL SHALL BEGIN AT THE BOTTOM OF SUBBASE.



TYPICAL WINGWALL SECTION
 (NOT TO SCALE)



TYPICAL ABUTMENT SECTION
 (NOT TO SCALE)

NOTE: 300 UNDERCUT AS DETERMINED NECESSARY BY THE RESIDENT ENGINEER.

PROJECT NAME:	DUXBURY	PLOT DATE:	15-JUL-2003
PROJECT NUMBER:	STP 013-4(24)	DRAWN BY:	R. H. PELLETT
FILE NAME:	/str5/86e059/so059pl.dgn	DESIGNED BY:	B. NYQUIST
PROJECT LEADER:	C. KELLER	CHECKED BY:	B. NYQUIST
R. O. W. SHEET 8 OF 13 SHEETS			