

STATE OF VERMONT  
AGENCY OF TRANSPORTATION

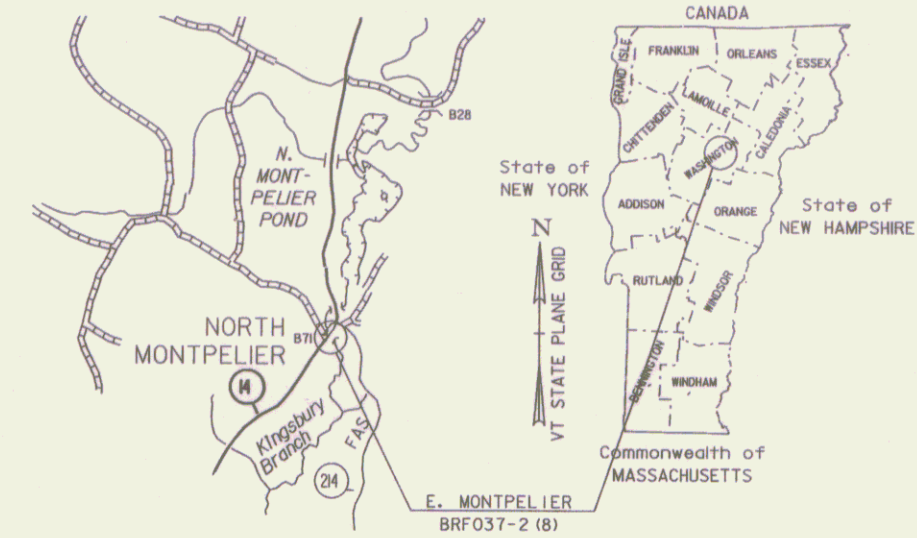


R. O. W. PLANS

PROPOSED IMPROVEMENT  
BRIDGE PROJECT

TOWN OF EAST MONTPELIER

COUNTY OF WASHINGTON

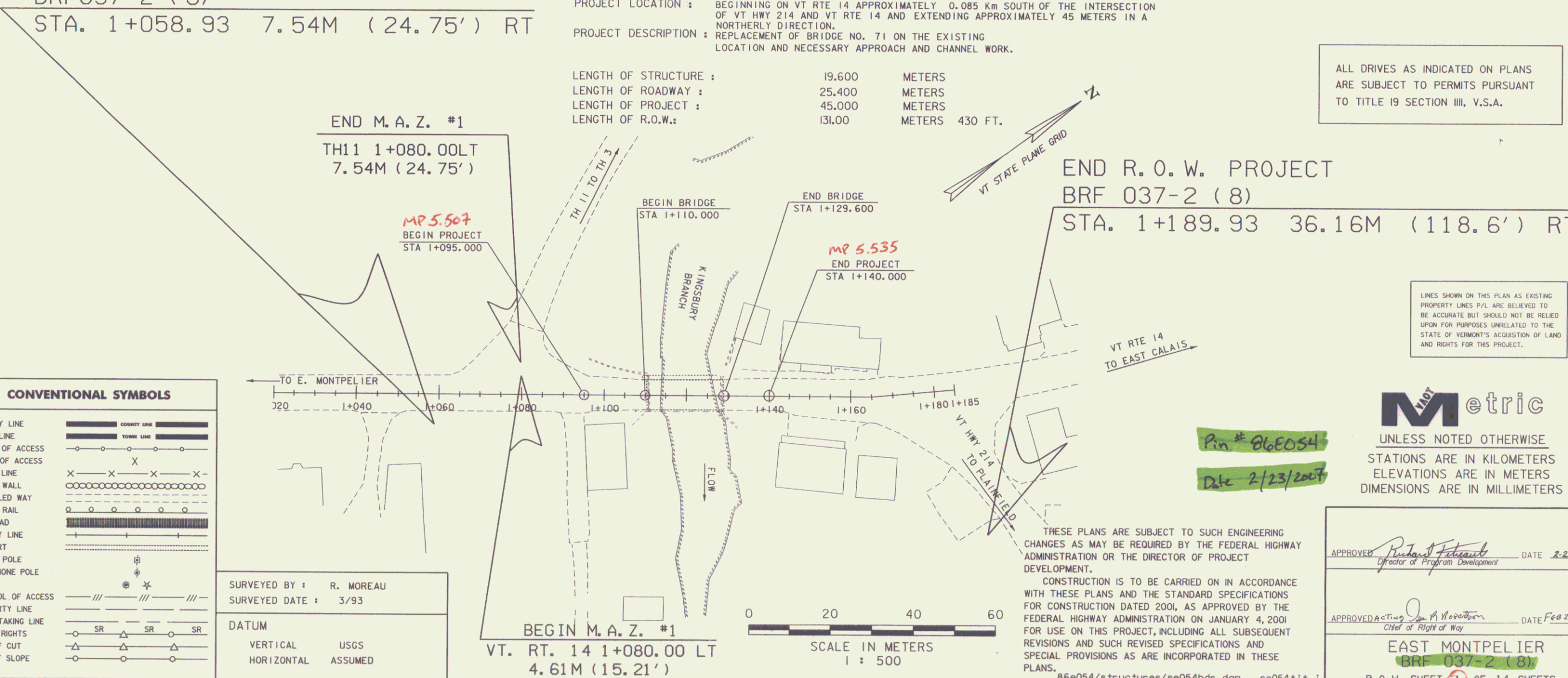


BEGIN R. O. W. PROJECT  
BRF037-2 (8)  
STA. 1+058.93 7.54M (24.75') RT

ROUTE NO : VT RTE 14, MINOR ARTERIAL BRIDGE NO : 71  
PROJECT LOCATION : BEGINNING ON VT RTE 14 APPROXIMATELY 0.085 Km SOUTH OF THE INTERSECTION OF VT HWY 214 AND VT RTE 14 AND EXTENDING APPROXIMATELY 45 METERS IN A NORTHERLY DIRECTION.  
PROJECT DESCRIPTION : REPLACEMENT OF BRIDGE NO. 71 ON THE EXISTING LOCATION AND NECESSARY APPROACH AND CHANNEL WORK.

LENGTH OF STRUCTURE : 19.600 METERS  
LENGTH OF ROADWAY : 25.400 METERS  
LENGTH OF PROJECT : 45.000 METERS  
LENGTH OF R.O.W.: 131.00 METERS 430 FT.

ALL DRIVES AS INDICATED ON PLANS ARE SUBJECT TO PERMITS PURSUANT TO TITLE 19 SECTION III, V.S.A.



**CONVENTIONAL SYMBOLS**

COUNTY LINE	— — — — —
TOWN LINE	— — — — —
LIMITS OF ACCESS	— — — — —
POINT OF ACCESS	X
FENCE LINE	X — X — X — X — X
STONE WALL	— — — — —
TRAVELED WAY	— — — — —
RAILROAD	— — — — —
SURVEY LINE	— — — — —
CULVERT	— — — — —
POWER POLE	⊕
TELEPHONE POLE	⊕
TREES	⊗
CONTROL OF ACCESS	///
PROPERTY LINE	— — — — —
R.O.W. TAKING LINE	— — — — —
SLOPE RIGHTS	SR
TOE OF CUT	— — — — —
TOE OF SLOPE	— — — — —

SURVEYED BY : R. MOREAU  
SURVEYED DATE : 3/93  
DATUM  
VERTICAL USGS  
HORIZONTAL ASSUMED

BEGIN M. A. Z. #1  
VT. RT. 14 1+080.00 LT  
4.61M (15.21')

0 20 40 60  
SCALE IN METERS  
1 : 500

THESE PLANS ARE SUBJECT TO SUCH ENGINEERING CHANGES AS MAY BE REQUIRED BY THE FEDERAL HIGHWAY ADMINISTRATION OR THE DIRECTOR OF PROJECT DEVELOPMENT.  
CONSTRUCTION IS TO BE CARRIED ON IN ACCORDANCE WITH THESE PLANS AND THE STANDARD SPECIFICATIONS FOR CONSTRUCTION DATED 2004, AS APPROVED BY THE FEDERAL HIGHWAY ADMINISTRATION ON JANUARY 4, 2004 FOR USE ON THIS PROJECT, INCLUDING ALL SUBSEQUENT REVISIONS AND SUCH REVISED SPECIFICATIONS AND SPECIAL PROVISIONS AS ARE INCORPORATED IN THESE PLANS.

LINES SHOWN ON THIS PLAN AS EXISTING PROPERTY LINES P.L. ARE BELIEVED TO BE ACCURATE BUT SHOULD NOT BE RELIED UPON FOR PURPOSES UNRELATED TO THE STATE OF VERMONT'S ACQUISITION OF LAND AND RIGHTS FOR THIS PROJECT.

Pin # 86E054  
Date 2/23/2007

**Metric**  
UNLESS NOTED OTHERWISE STATIONS ARE IN KILOMETERS ELEVATIONS ARE IN METERS DIMENSIONS ARE IN MILLIMETERS

APPROVED: *[Signature]* DATE 2-2-07  
DIRECTOR OF PROGRAM DEVELOPMENT  
APPROVED: *[Signature]* DATE Feb 2, 2007  
CHIEF OF RIGHTS OF WAY  
EAST MONTPELIER  
BRF 037-2 (8)  
R. O. W. SHEET 1 OF 14 SHEETS