

ROADWAY LAYOUT SHEET 7

REMOVE EXISTING SIDEWALK (COMMON EXCAVATION)

50+00 ~ 50+93 RT
52+35 ~ 53+50 RT
53+73 ~ 54+72 RT

EXISTING DRAINAGE

52 49+70 RT ~ 50+44 RT
EXISTING PIPE - RETAIN
53 50+44 RT ~ 50+58 RT
EXISTING PIPE & DI - REMOVE
54 50+58 LT
EXISTING DI - REMOVE
EXISTING PIPE - PLUG
55 50+59 RT
EXISTING DI - REMOVE
EXISTING PIPE - PLUG
56 52+44 RT ~ 52+46 LT
EXISTING PIPE & DI - REMOVE
57 54+75 LT ~ 54+83 RT
EXISTING PIPE & DI - REMOVE
58 54+83 RT ~ 40+40 RT (DEVIN ST.)
EXISTING PIPE & DI - REMOVE
EXISTING PIPE - PLUG

NEW DRAINAGE

71 49+40 RT ~ 50+30 RT
NEW 18"x18" RCP/CPEP (SL)
W/J.B. @ 50+30 RT
72 50+44 RT ~ 50+30 RT
NEW 18"x20" RCP/CPEP (SL)
W/DI @ 50+44 RT
73 35+38.8 RT ~ 35+34.5 LT (GODFREAU ST.)
NEW 18"x20" RCP/CPEP (SL)
W/DI @ 35+38.8
74 35+34.5 LT (GODFREAU ST.) ~ 52+45 RT
NEW 18"x20" RCP/CPEP (SL)
W/DI @ 35+34.5 LT
75 52+45 RT ~ 52+45 RT
NEW 18"x48" RCP/CPEP (SL)
W/DI @ 52+45 RT AND J.B. @ 52+45 RT

NEW DRAINAGE (CONT.)

76 52+45 RT ~ 54+00 RT
NEW 18"x33" RCP/CPEP (SL)
W/DI @ 54+00 RT
77 54+00 LT ~ 54+00 RT
NEW 18"x38" RCP/CPEP (SL)
W/DI @ 54+00 LT
78 54+00 RT ~ 55+12 RT
NEW 18"x40" RCP/CPEP (SL)
W/J.B. @ 55+12 RT
79 40+36.06 RT ~ 40+36.06 LT (DEVIN ST.)
NEW 18"x48" RCP/CPEP (SL)
W/DI @ 40+36.06 RT
80 40+36.06 LT (DEVIN ST.) ~ 55+12 RT
NEW 18"x20" RCP/CPEP (SL)
W/DI @ 40+36.06 LT

CHANGING ELEVATION OF SEWER MANHOLE

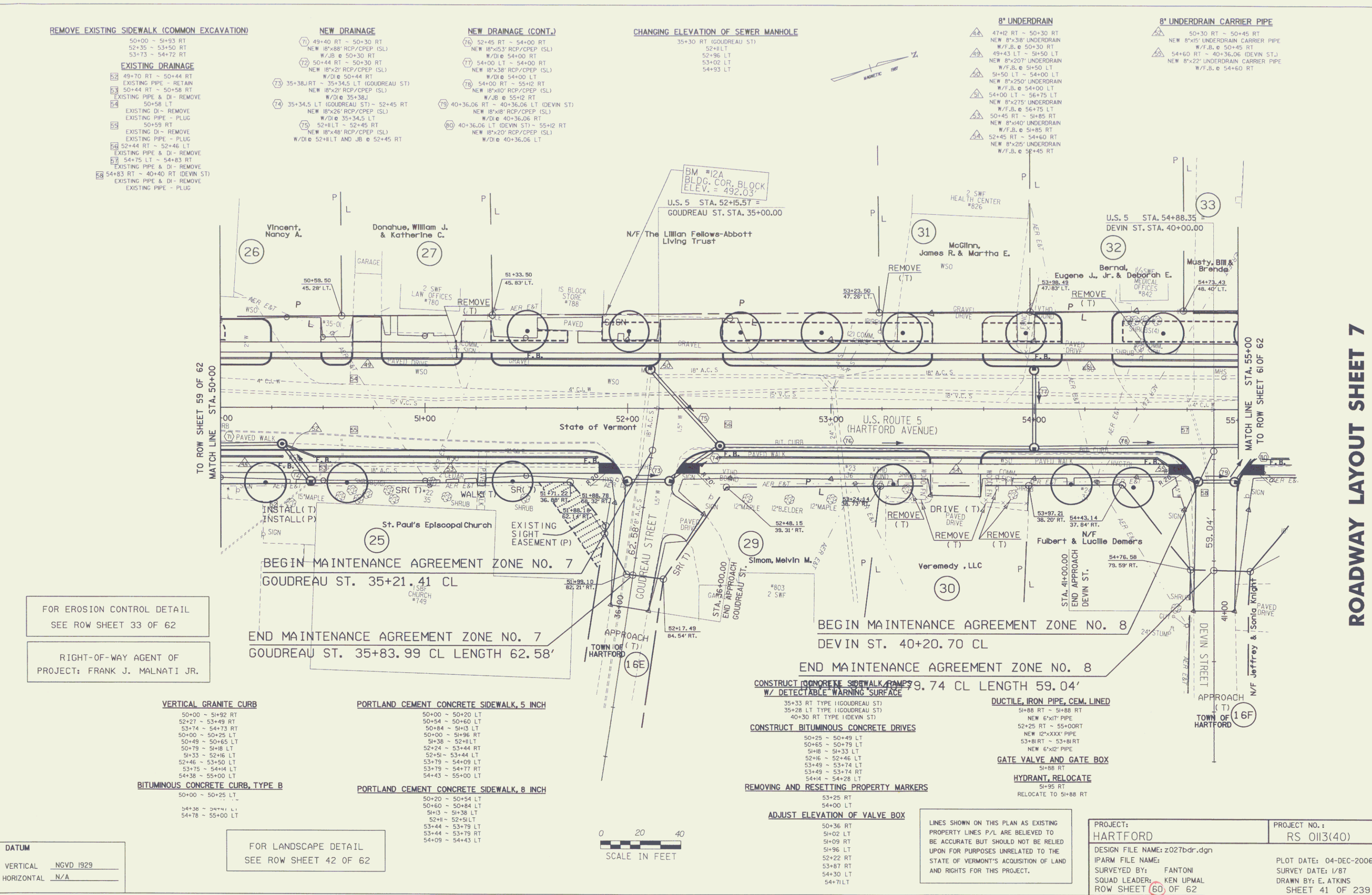
35+30 RT (GODFREAU ST.)
52+11 LT
52+96 LT
53+02 LT
54+93 LT

8" UNDERDRAIN

44 47+12 RT ~ 50+30 RT
NEW 8"x38" UNDERDRAIN
W/F.B. @ 50+30 RT
45 49+43 LT ~ 54+50 LT
NEW 8"x20" UNDERDRAIN
W/F.B. @ 54+50 LT
46 54+50 LT ~ 54+00 LT
NEW 8"x250" UNDERDRAIN
W/F.B. @ 54+00 LT
47 54+00 LT ~ 56+75 LT
NEW 8"x275" UNDERDRAIN
W/F.B. @ 56+75 LT
48 50+45 RT ~ 54+85 RT
NEW 8"x40" UNDERDRAIN
W/F.B. @ 54+85 RT
49 52+45 RT ~ 54+60 RT
NEW 8"x25" UNDERDRAIN
W/F.B. @ 54+45 RT

8" UNDERDRAIN CARRIER PIPE

50 50+30 RT ~ 50+45 RT
NEW 8"x5" UNDERDRAIN CARRIER PIPE
W/F.B. @ 50+45 RT
51 54+60 RT ~ 40+36.06 (DEVIN ST.)
NEW 8"x22" UNDERDRAIN CARRIER PIPE
W/F.B. @ 54+60 RT



FOR EROSION CONTROL DETAIL
SEE ROW SHEET 33 OF 62

RIGHT-OF-WAY AGENT OF
PROJECT: FRANK J. MALNATI JR.

BEGIN MAINTENANCE AGREEMENT ZONE NO. 7
GODFREAU ST. 35+21.41 CL

END MAINTENANCE AGREEMENT ZONE NO. 7
GODFREAU ST. 35+83.99 CL LENGTH 62.58'

BEGIN MAINTENANCE AGREEMENT ZONE NO. 8
DEVIN ST. 40+20.70 CL

END MAINTENANCE AGREEMENT ZONE NO. 8
DEVIN ST. 40+79.74 CL LENGTH 59.04'

VERTICAL GRANITE CURB	PORTLAND CEMENT CONCRETE SIDEWALK, 5 INCH
50+00 ~ 51+92 RT	50+00 ~ 50+20 LT
52+27 ~ 53+49 RT	50+54 ~ 50+60 LT
53+74 ~ 54+73 RT	50+84 ~ 51+03 LT
50+00 ~ 50+25 LT	50+00 ~ 51+96 RT
50+49 ~ 50+65 LT	51+38 ~ 52+11 LT
50+79 ~ 51+18 LT	52+24 ~ 53+44 RT
51+33 ~ 52+16 LT	52+51 ~ 53+44 LT
52+46 ~ 53+50 LT	53+79 ~ 54+09 LT
53+75 ~ 54+14 LT	53+79 ~ 54+77 RT
54+38 ~ 55+00 LT	54+43 ~ 55+00 LT
BITUMINOUS CONCRETE CURB, TYPE B	PORTLAND CEMENT CONCRETE SIDEWALK, 8 INCH
50+00 ~ 50+25 LT	50+20 ~ 50+54 LT
54+38 ~ 54+73 LT	50+60 ~ 50+84 LT
54+78 ~ 55+00 LT	51+3 ~ 51+38 LT
	52+18 ~ 52+51 LT
	53+44 ~ 53+79 LT
	53+44 ~ 53+79 RT
	54+09 ~ 54+43 LT

FOR LANDSCAPE DETAIL
SEE ROW SHEET 42 OF 62



- CONSTRUCT CONCRETE SIDEWALK RAMP**
W/ DETECTABLE WARNING SURFACE
- 35+33 RT TYPE 1 (GODFREAU ST.)
- 35+28 LT TYPE 1 (GODFREAU ST.)
- 40+30 RT TYPE 1 (DEVIN ST.)
- CONSTRUCT BITUMINOUS CONCRETE DRIVES**
- 50+25 ~ 50+49 LT
- 50+65 ~ 50+79 LT
- 51+8 ~ 51+33 LT
- 52+16 ~ 52+46 LT
- 53+49 ~ 53+74 LT
- 53+49 ~ 53+74 RT
- 54+14 ~ 54+28 LT
- REMOVING AND RESETTING PROPERTY MARKERS**
- 53+25 RT
- 54+00 LT
- ADJUST ELEVATION OF VALVE BOX**
- 50+36 RT
- 51+02 LT
- 51+09 RT
- 51+96 LT
- 52+22 RT
- 53+87 RT
- 54+30 LT
- 54+71 LT
- DUCTILE IRON PIPE, CEM. LINED**
- NEW 6"X12" PIPE
- 52+25 RT ~ 55+00 RT
- NEW 12"X12" PIPE
- 53+81 RT ~ 53+81 RT
- NEW 6"X12" PIPE
- GATE VALVE AND GATE BOX**
- 51+88 RT
- HYDRANT, RELOCATE**
- 51+95 RT
- RELOCATE TO 51+88 RT

LINES SHOWN ON THIS PLAN AS EXISTING
PROPERTY LINES P/L ARE BELIEVED TO
BE ACCURATE BUT SHOULD NOT BE RELIED
UPON FOR PURPOSES UNRELATED TO THE
STATE OF VERMONT'S ACQUISITION OF LAND
AND RIGHTS FOR THIS PROJECT.

PROJECT: HARTFORD	PROJECT NO. : RS 0113(40)
DESIGN FILE NAME: z027bdr.dgn	PLOT DATE: 04-DEC-2006
IPARM FILE NAME:	SURVEY DATE: 1/87
SURVEYED BY: FANTONI	DRAWN BY: E. ATKINS
SQUAD LEADER: KEN UPMAL	SHEET 41 OF 239
ROW SHEET 60 OF 62	