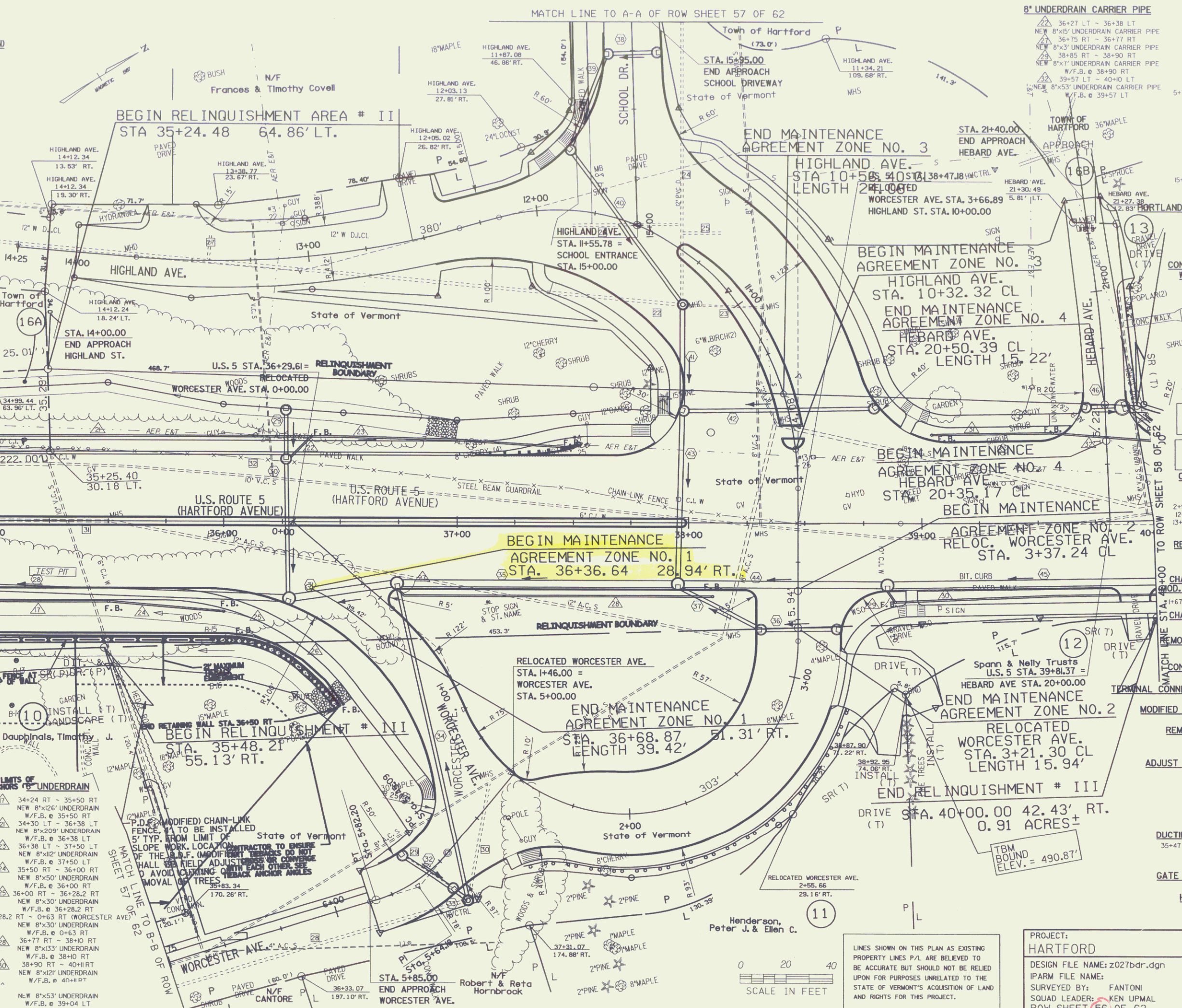


- EXCAVATION OF SURFACES AND PAVEMENTS**
 0+55 - 1+32 LT (WORCESTER AVE.)
 20+47 - 2+37 LT (HEBARD AVE.)
- REMOVE EXISTING SIDEWALK (COMMON EXCAVATION)**
 39+04 - 39+87 RT
 39+96 - 40+00 RT
 39+00 - 39+20 LT
 36+91 LT - 12+00 LT (HIGHLAND AVE)
 1+82 LT - 1+85 RT (HIGHLAND AVE)
- EXISTING DRAINAGE**
 1+17 LT - 1+40 LT (HIGHLAND AVE)
 EXISTING PIPE - RETAIN
 EXISTING MI - REMOVE
 1+17 LT - 1+43 RT (HIGHLAND AVE)
 EXISTING PIPE - PLUG
 EXISTING MI - ADJUST
 1+17 LT (HIGHLAND AVE) - 5+78 RT (SCHOOL DR)
 EXISTING PIPE - RETAIN
 1+25 RT - 1+37 LT (HIGHLAND AVE)
 EXISTING PIPE - PLUG
 EXISTING MI - REMOVE
 1+39 RT - 1+85 LT (HIGHLAND AVE)
 EXISTING PIPE - PLUG
 EXISTING MI - REMOVE
 1+34 RT - 1+41 LT (HIGHLAND AVE)
 EXISTING PIPE & DI - RETAIN
 5+52.6 LT - 5+52.6 LT (WORCESTER AVE)
 EXISTING PIPE - RETAIN
 5+52.6 LT - 5+52.6 LT (WORCESTER AVE)
 EXISTING PIPE - PLUG
 EXISTING MI @ 5+52.6 LT - RETAIN
 35+33 RT
 EXISTING PIPE - PLUG
 EXISTING DI - REMOVE
 36+20 LT
 EXISTING PIPE - PLUG
 EXISTING DI - REMOVE
- RETAINING WALL**
 35+00 - 36+50 RT
- NEW DRAINAGE**
 34+20 RT - 36+27 RT
 NEW 36"x206" CAAP
 W/D @ 36+27 RT
 36+27 LT - 36+27 LT
 NEW 18"x20" RCP/CPEP (SL)
 W/D @ 36+27 LT
 36+27 LT - 36+27 RT
 NEW 18"x58" RCP/CPEP (SL)
 W/D @ 36+27 LT
 36+27 RT - 36+75 RT
 NEW 36"x42" CAAP
 W/D @ 36+75 RT
 5+61.6 RT - 5+53.6 LT (WORCESTER AVE)
 NEW 18"x20" RCP/CPEP (SL)
 W/D @ 5+53.6 LT
 5+53.6 LT - 5+52.6 LT (WORCESTER AVE)
 NEW 18"x20" RCP/CPEP (SL)
 W/D @ 5+53.6 LT
 5+52.6 LT (WORCESTER AVE) - 36+75 RT
 NEW 18"x20" RCP/CPEP (SL)
 W/D @ 5+52.6 LT
 36+75 RT - 37+95 RT
 NEW 36"x89" RCP/CPEP (SL)
 W/D @ 37+95 RT
 3+20.57 RT - 3+20.57 LT (WORCESTER AVE)
 NEW 18"x33" RCP/CPEP (SL)
 W/D @ 3+20.57 RT
 3+20.57 LT (WORCESTER AVE) - 37+95 RT
 NEW 18"x33" RCP/CPEP (SL)
 W/D @ 3+20.57 LT
 15+69.6 RT - 15+69.6 LT (SCHOOL DR)
 NEW 18"x42" RCP/CPEP (SL)
 W/D @ 15+69.6 RT
 15+69.6 LT - 15+29.9 LT (SCHOOL DR)
 NEW 18"x42" RCP/CPEP (SL)
 W/D @ 15+69.6 LT
 15+29.9 LT (SCHOOL DR) - 1+6.9 LT (HIGHLAND AVE)
 NEW 18"x80" RCP/CPEP (SL)
 W/D @ 1+6.9 LT
 1+6.9 LT - 10+65.57 LT (HIGHLAND AVE)
 NEW 24"x44" RCP/CPEP (SL)
 W/D @ 1+6.9 LT
 10+41.9 RT - 10+65.57 LT (HIGHLAND AVE)
 NEW 18"x84" RCP/CPEP (SL)
 W/D @ 10+41.9 RT
 10+65.57 LT (HIGHLAND AVE) - 37+95 RT
 NEW 24"x44" RCP/CPEP (SL)
 W/D @ 10+65.57 LT
 37+95 RT - 38+85 RT
 NEW 36"x88" RCP/CPEP (SL)
 W/D @ 38+85 RT
 38+85 RT - 40+10 RT
 NEW 36"x124" RCP/CPEP (SL)
 W/D @ 40+10 RT
 20+49.62 LT - 20+49.62 RT (HEBARD AVE)
 NEW 18"x55" RCP/CPEP (SL)
 W/D @ 20+49.62 LT
- CHANGING ELEVATION OF SEWER MANHOLE**
 35+51 RT
 39+93 LT
 38+31 RT
 1+40 RT (WORCESTER AVE)
 3+17 LT (WORCESTER AVE)
 10+47 LT (HIGHLAND AVE)
 10+83 RT (HIGHLAND AVE)
 1+29 RT (HIGHLAND AVE)
- CHANGING ELEV. OF DROP INLETS, CATCH BASINS, OR MANHOLES**
 MID @ 13+76 RT (HIGHLAND AVE)
- DATUM**
 VERTICAL NCGD 1929
 HORIZONTAL N/A



- STONE FILL, TYPE I**
 35+25 - 37+00 LT (ABOVE WALL)
 35+25 - 0+70 RT (WORCESTER AVE)
 35+00 RT - 0+50 RT (WORCESTER AVE)
- STONE FILL, TYPE II**
 35+00 - 35+25 RT
 35+00 - 35+25 RT
- VERTICAL GRANITE CURB**
 35+00 - 5+75 RT (WORCESTER AVE)
 5+75 LT (WORCESTER AVE) - 2+9 RT (RELOCATED WORCESTER AVE)
 3+45 (WORCESTER AVE) - 39+85 RT
 39+86 - 40+00 RT
 36+72 - 38+28 RT
 0+57 - 3+46 LT (WORCESTER AVE)
 35+00 - 37+99 RT (MEDIAN)
 35+00 - 37+99 LT (MEDIAN)
 37+08 - 12+48 LT (HIGHLAND AVE)
 10+32 - 1+36 RT (MEDIAN HIGHLAND AVE)
 10+32 - 1+36 LT (MEDIAN HIGHLAND AVE)
 15+83 LT (SCHOOL DR) - 12+4 RT (HIGHLAND AVE)
 15+83 RT (SCHOOL DR) - 39+71 LT
 39+89 - 40+00 LT
- PORTLAND CEMENT CONCRETE SIDEWALK, 5 INCH**
 35+00 - 1+33 RT (WORCESTER AVE)
 1+60 (WORCESTER AVE) - 40+00 RT
 35+00 LT - 6+75 LT (HIGHLAND AVE)
 1+51 (HIGHLAND AVE) - 39+69 LT
 1+51 (HIGHLAND AVE) - 39+69 LT
 39+91 - 40+00 LT
- CONSTRUCT CONCRETE SIDEWALK RAMPS W/ DETECTABLE WARNING SURFACE**
 38+96 RT TYPE 2
 38+96 LT TYPE 2
 5+23 RT TYPE 6 (WORCESTER AVE)
 5+23 LT TYPE 6 (WORCESTER AVE)
 10+40 LT TYPE 6 (HIGHLAND AVE)
 1+50 RT TYPE 6 (HIGHLAND AVE)
 1+83 RT TYPE 6 (HIGHLAND AVE)
 12+00 LT TYPE 6 (HIGHLAND AVE)
 20+44 RT TYPE 6 (HEBARD AVE)
 20+44 LT TYPE 6 (HEBARD AVE)
- FOR LANDSCAPE DETAIL**
 SEE ROW SHEET 39 OF 62
- FOR EROSION CONTROL DETAIL**
 SEE ROW SHEET 30 OF 62
- RIGHT-OF-WAY AGENT OF PROJECT:** FRANK J. MALNATI JR.
- CONSTRUCT BITUMINOUS CONCRETE DRIVES**
 39+86 - 39+98 RT
 2+9 - 3+15 RT (WORCESTER AVE)
 12+41 - 12+62 RT (HIGHLAND AVE)
 13+47 - 13+70 RT (HIGHLAND AVE)
- REMOVING AND RESETTING PROPERTY MARKERS**
 0+69 RT (WORCESTER AVE)
 1+67 - 2+93 RT (WORCESTER AVE)
 35+00 - 36+50 RT
- CHAIN-LINK FENCE, 4 FEET (WOOD - POST AND RAIL FENCE)**
 1+67 - 2+93 RT (WORCESTER AVE)
 35+00 - 36+50 RT
- CHAIN-LINK FENCE, 6 FEET**
 35+00 - 36+50 RT
- REMOVAL OF EXISTING FENCE**
 35+00 - 38+58 LT
 35+00 - 37+08 LT
- CONCRETE MEDIAN BARRIER**
 37+08 LT - 37+08 LT
- TERMINAL CONNECTOR FOR STEEL BEAM GUARDRAIL**
 37+08 LT - 37+08 LT
- MODIFIED ECCENTRIC LOADER TERMINAL**
 37+40 - 37+48 LT
- REMOVAL AND DISPOSAL OF EXISTING GUARDRAIL**
 35+00 - 38+96 LT
- ADJUST ELEVATION OF VALVE BOX**
 35+40 LT
 38+25 LT
 1+18 RT (HIGHLAND AVE)
 1+21 RT (HIGHLAND AVE)
 38+69 RT
 38+97 RT
- DUCTILE IRON PIPE, CEM. LINED**
 35+47 - 35+53 RT (NEW 6"x30" PIPE)
 39+25 RT - 39+25 LT
 NEW 6"x15" PIPE
- GATE VALVE WITH VALVE BOX**
 39+25 LT
- HYDRANT, RELOCATE**
 RELOCATE TO 39+25 LT
- PROJECT:** HARTFORD
DESIGN FILE NAME: z027bdr.dgn
IPARW FILE NAME:
SURVEYED BY: FANTONI
SQUAD LEADER: KEN UPWAL
ROW SHEET (56) OF 62
- PROJECT NO.:** RS 013(40)
PLOT DATE: 04-DEC-2006
SURVEY DATE: 1/87
DRAWN BY: E. ATKINS
SHEET 37 OF 239

ROADWAY LAYOUT SHEET 4