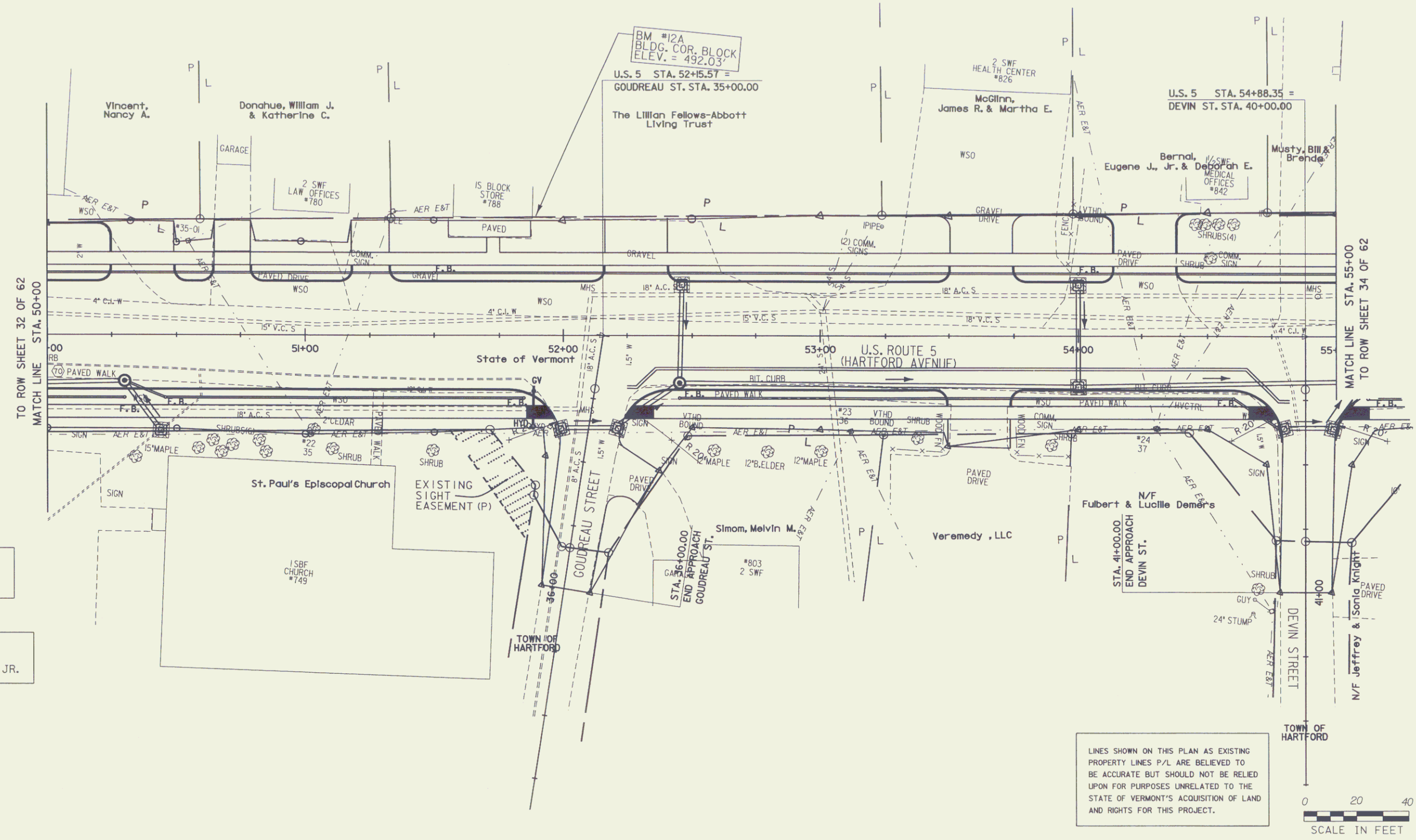


DROP INLET PROTECTION
AREAS SUBJECT TO TRAFFIC
GEOTEXTILE FABRIC FOR FILTERS
 PROP. DI 50+44 RT (B S.F. INLET PROTECTION)
 PROP. DI 35+34.5 LT (GODFREAU ST) (B S.F. INLET PROTECTION)
 PROP. DI 35+38.1 RT (GODFREAU ST) (B S.F. INLET PROTECTION)
 PROP. DI 52+46 LT (B S.F. INLET PROTECTION)
 PROP. DI 54+00 RT (B S.F. INLET PROTECTION)
 PROP. DI 54+00 LT (B S.F. INLET PROTECTION)
 PROP. DI 40+36.06 RT (DEVIN ST) (B S.F. INLET PROTECTION)
 PROP. DI 40+36.06 LT (DEVIN ST) (B S.F. INLET PROTECTION)

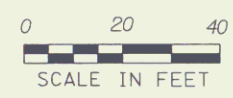
SEED
 50+00 - 55+00 RT
 50+00 - 55+00 LT
SEED - WINTER RYE
 50+00 - 55+00 RT
 50+00 - 55+00 LT
HAY MULCH
 50+00 - 55+00 RT
 50+00 - 55+00 LT



FOR LANDSCAPE DETAIL
 SEE ROW SHEET 42 OF 62

RIGHT-OF-WAY AGENT OF
 PROJECT: FRANK J. MALNATI JR.

LINES SHOWN ON THIS PLAN AS EXISTING
 PROPERTY LINES P/L ARE BELIEVED TO
 BE ACCURATE BUT SHOULD NOT BE RELIED
 UPON FOR PURPOSES UNRELATED TO THE
 STATE OF VERMONT'S ACQUISITION OF LAND
 AND RIGHTS FOR THIS PROJECT.



DATUM
 VERTICAL NGVD 1929
 HORIZONTAL N/A

PROJECT: HARTFORD	PROJECT NO.: RS 0113(40)
DESIGN FILE NAME: ****FILENAME***	PLOT DATE: 14-JUL-2006
IPARM FILE NAME:	SURVEY DATE: 1/87
SURVEYED BY: FANTONI	DRAWN BY: E. ATKINS
SQUAD LEADER: KEN UPMAL	ROW SHEET (33) OF 62

EROSION CONTROL LAYOUT SHEET 7