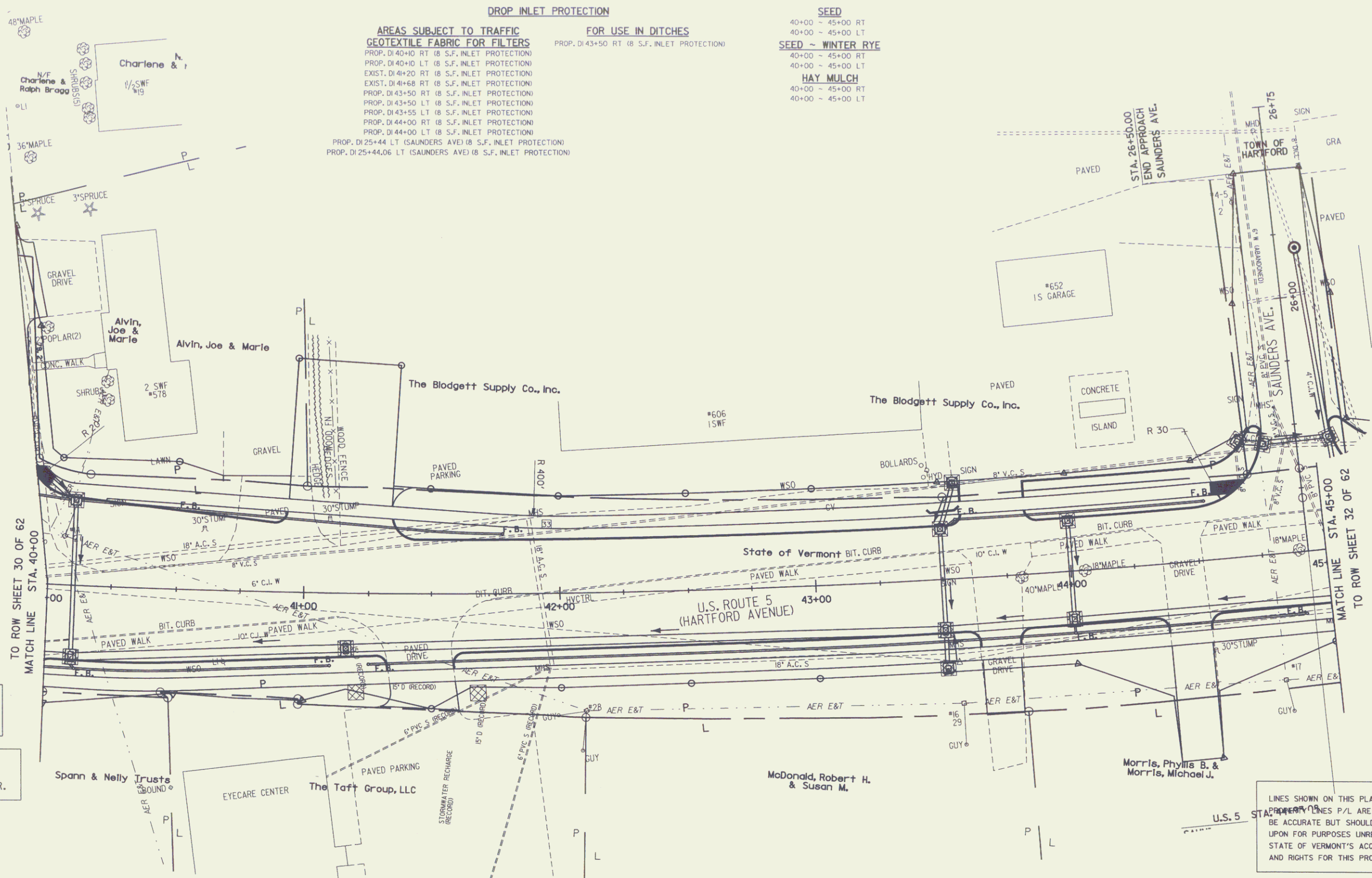


**DROP INLET PROTECTION**

**AREAS SUBJECT TO TRAFFIC**  
 GEOTEXTILE FABRIC FOR FILTERS  
 PROP. DI 40+00 RT (8 S.F. INLET PROTECTION)  
 PROP. DI 40+00 LT (8 S.F. INLET PROTECTION)  
 EXIST. DI 4+20 RT (8 S.F. INLET PROTECTION)  
 EXIST. DI 4+66 RT (8 S.F. INLET PROTECTION)  
 PROP. DI 43+50 RT (8 S.F. INLET PROTECTION)  
 PROP. DI 43+50 LT (8 S.F. INLET PROTECTION)  
 PROP. DI 43+55 LT (8 S.F. INLET PROTECTION)  
 PROP. DI 44+00 RT (8 S.F. INLET PROTECTION)  
 PROP. DI 44+00 LT (8 S.F. INLET PROTECTION)  
 PROP. DI 25+44 LT (SAUNDERS AVE) (8 S.F. INLET PROTECTION)  
 PROP. DI 25+44.06 LT (SAUNDERS AVE) (8 S.F. INLET PROTECTION)

**FOR USE IN DITCHES**  
 PROP. DI 43+50 RT (8 S.F. INLET PROTECTION)

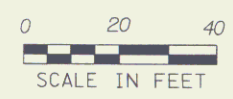
**SEED**  
 40+00 ~ 45+00 RT  
 40+00 ~ 45+00 LT  
**SEED ~ WINTER RYE**  
 40+00 ~ 45+00 RT  
 40+00 ~ 45+00 LT  
**HAY MULCH**  
 40+00 ~ 45+00 RT  
 40+00 ~ 45+00 LT



FOR LANDSCAPE DETAIL  
 SEE ROW SHEET 40 OF 62

RIGHT-OF-WAY AGENT OF  
 PROJECT: FRANK J. MALNATI JR.

Lines shown on this plan as existing  
 are believed to be accurate but should not be relied  
 upon for purposes unrelated to the  
 state of Vermont's acquisition of land  
 and rights for this project.



**DATUM**  
 VERTICAL NGVD 1929  
 HORIZONTAL N/A

PROJECT: <b>HARTFORD</b>	PROJECT NO.: RS 0113(40)
DESIGN FILE NAME: ****FILENAME***	PLOT DATE: 14-JUL-2006
IPARM FILE NAME:	SURVEY DATE: 1/87
SURVEYED BY: FANTONI	DRAWN BY: E. ATKINS
SQUAD LEADER: KEN UPMAL	ROW SHEET 31 OF 62

**EROSION CONTROL LAYOUT SHEET 5**