

SNOW FENCE (MOD. - PDF)
 28+90 - 30+00 LT
 29+39 - 30+00 RT

**AREAS SUBJECT TO TRAFFIC
 GEOTEXTILE FABRIC FOR FILTERS**
 EXIST. DI 25+21.6 RT (8 S.F. INLET PROTECTION)
 PROP. DI 25+22.4 RT (8 S.F. INLET PROTECTION)
 PROP. DI 26+70 LT (8 S.F. INLET PROTECTION)
 PROP. DI 26+70 RT (8 S.F. INLET PROTECTION)
 PROP. DI 29+20 LT (8 S.F. INLET PROTECTION)
 PROP. DI 29+20 RT (8 S.F. INLET PROTECTION)
 EXIST. DI 27+06 LT (8 S.F. INLET PROTECTION)
 EXIST. DI 27+07 LT (8 S.F. INLET PROTECTION)

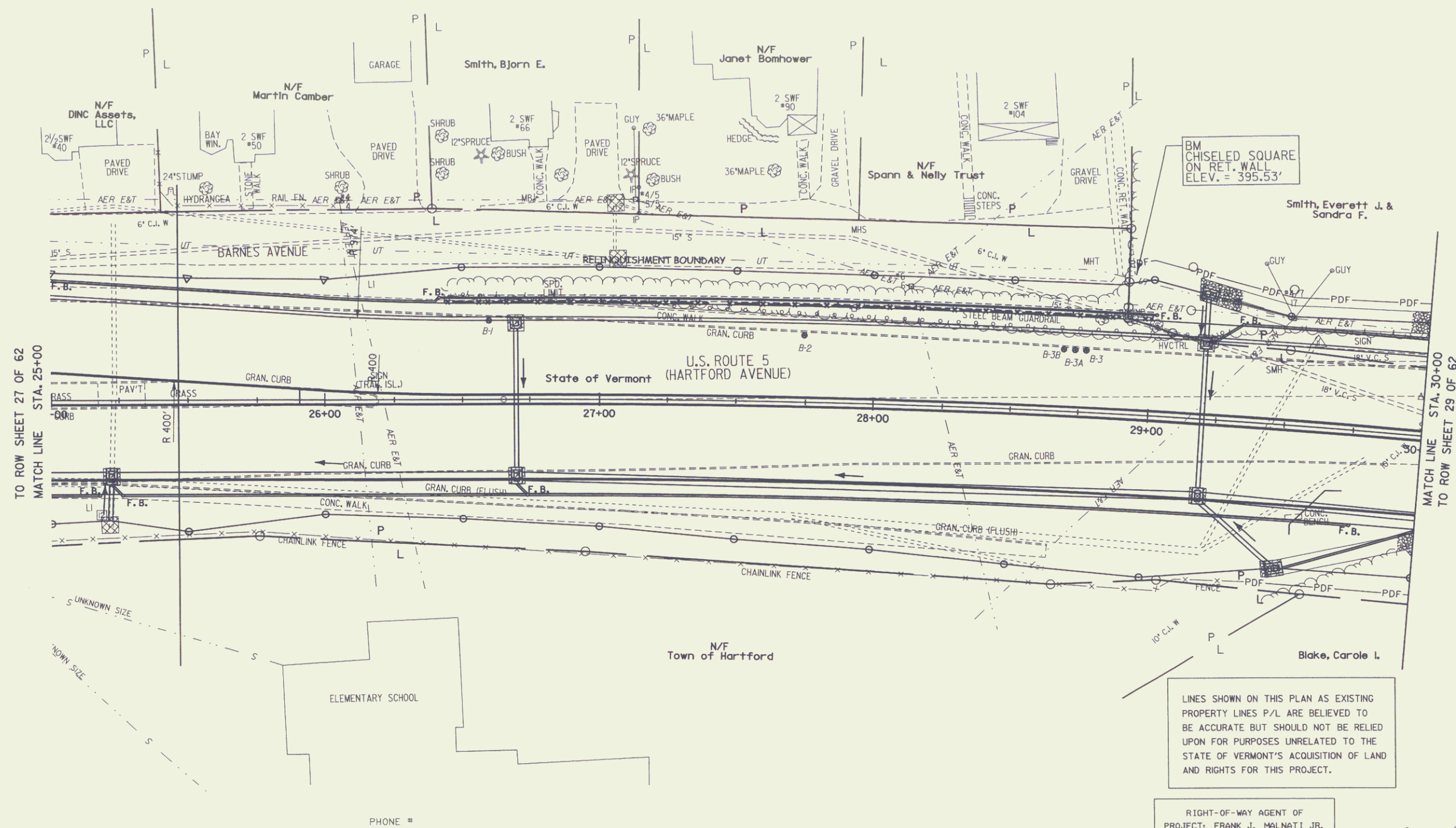
**DROP INLET PROTECTION
 GEOTEXTILE FABRIC FOR FILTERS**
 PROP. DI 29+20 LT (8 S.F. INLET PROTECTION)
 PROP. DI 29+50 RT (8 S.F. INLET PROTECTION)

SEED
 25+00 - 30+00 RT
 25+00 - 30+00 LT

SEED - WINTER RYE
 25+00 - 30+00 RT
 25+00 - 30+00 LT

HAY MULCH
 25+00 - 30+00 RT
 25+00 - 30+00 LT

HAYBALES FOR EROSION CONTROL
 25+00 - 30+00 RT - 8 EACH
 25+00 - 30+00 LT - 8 EACH



BM CHISELED SQUARE
 ON RET. WALL
 ELEV. = 395.53'

LINES SHOWN ON THIS PLAN AS EXISTING
 PROPERTY LINES P/L ARE BELIEVED TO
 BE ACCURATE BUT SHOULD NOT BE RELIED
 UPON FOR PURPOSES UNRELATED TO THE
 STATE OF VERMONT'S ACQUISITION OF LAND
 AND RIGHTS FOR THIS PROJECT.

RIGHT-OF-WAY AGENT OF
 PROJECT: FRANK J. MALNATI JR.

FOR LANDSCAPE DETAIL
 SEE ROW SHEET 37 OF 62



DATUM
 VERTICAL: N/A
 HORIZONTAL: N/A

PROJECT: HARTFORD	PROJECT NO.: RS 0113(40)
DESIGN FILE NAME: ****FILENAME***	PLOT DATE: 14-JUL-2006
IPARM FILE NAME:	SURVEY DATE: 1/87
SURVEYED BY: FANTONI	DRAWN BY: E. ATKINS
SQUAD LEADER: KEN UPMAL	ROW SHEET 28 OF 62

EROSION CONTROL LAYOUT SHEET 2