

STATE OF VERMONT
AGENCY OF TRANSPORTATION

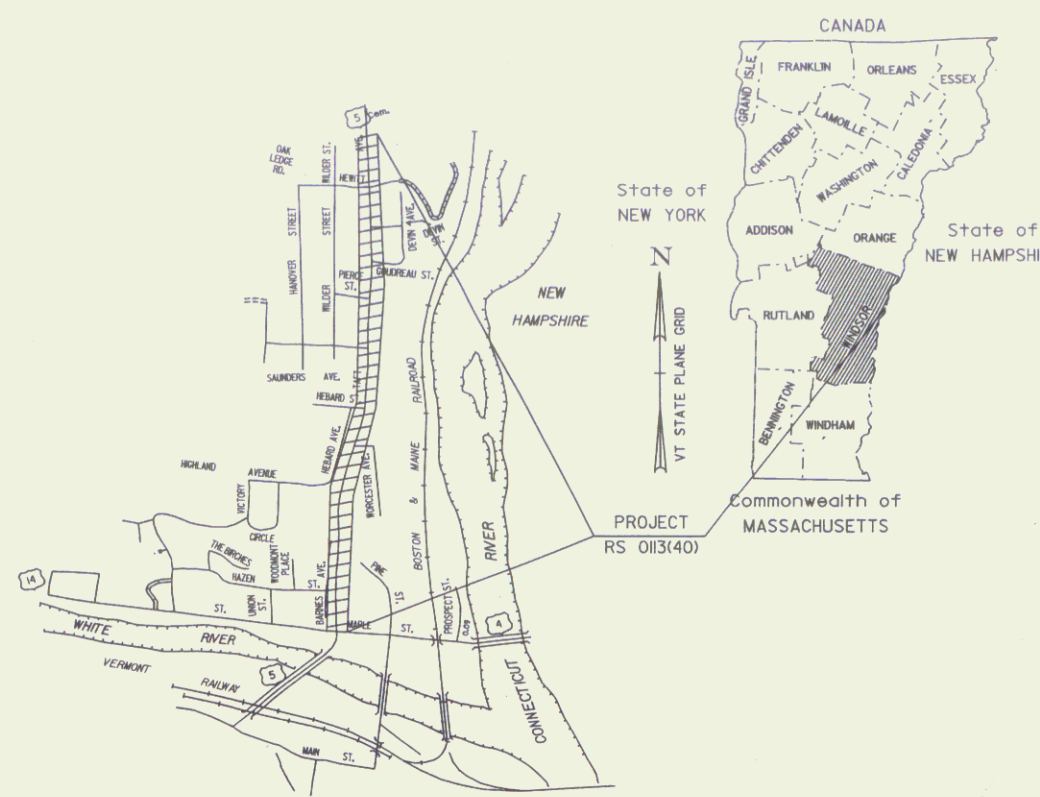


R. O. W. PLANS

TOWN OF HARTFORD
COUNTY OF WINDSOR

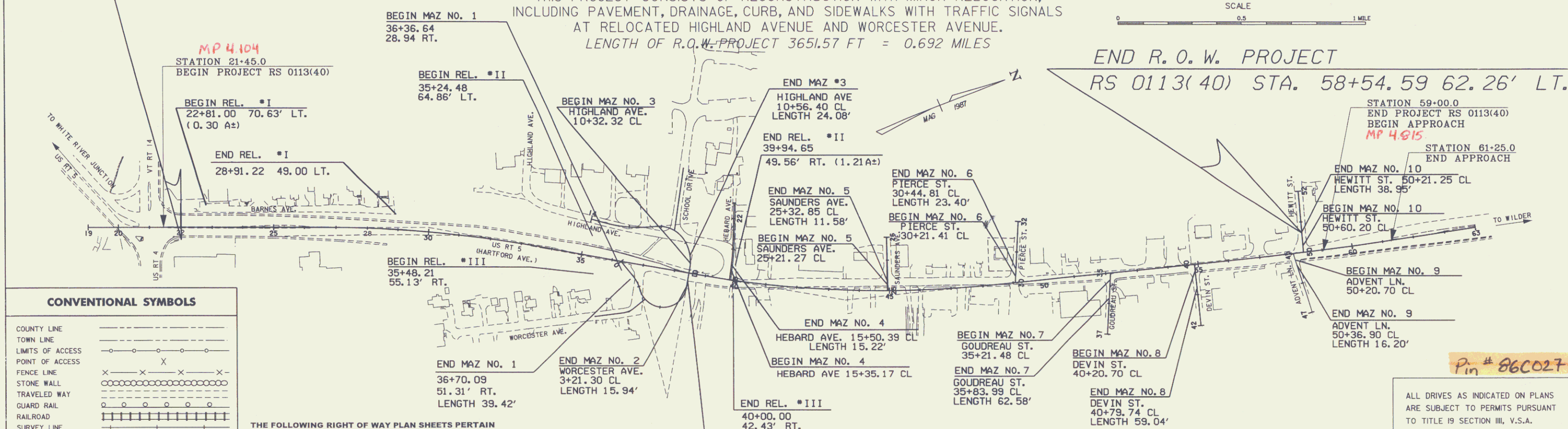
U.S. ROUTE 5 (MAJOR COLLECTOR)

BEGINNING ON US ROUTE 5 AT THE INTERSECTION OF US ROUTE 5 AND
US ROUTE 4/VT ROUTE 14 AND EXTENDING NORTHERLY 0.711 MILES.
LENGTH OF ROADWAY: 3755.00 FT. = 0.711 MILES
LENGTH OF PROJECT: 3755.00 FT. = 0.711 MILES
THIS PROJECT CONSISTS OF RECONSTRUCTION WITH MINOR RELOCATION,
INCLUDING PAVEMENT, DRAINAGE, CURB, AND SIDEWALKS WITH TRAFFIC SIGNALS
AT RELOCATED HIGHLAND AVENUE AND WORCESTER AVENUE.
LENGTH OF R.O.W. PROJECT 3651.57 FT = 0.692 MILES



BEGIN R. O. W. PROJECT
RS 0113(40)
STA. 22+02.84 41.24' RT.

END R. O. W. PROJECT
RS 0113(40) STA. 58+54.59 62.26' LT.



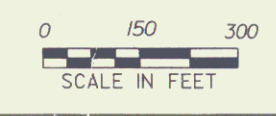
CONVENTIONAL SYMBOLS

COUNTY LINE	---
TOWN LINE	- - - -
LIMITS OF ACCESS	○ ○ ○ ○
POINT OF ACCESS	X
FENCE LINE	x x x x
STONE WALL	○ ○ ○ ○ ○ ○
TRAVELED WAY	—
RAILROAD	—+—+—+—+—
SURVEY LINE	—+—+—+—+—
CULVERT	—+—+—+—+—
POWER POLE	⊕
TELEPHONE POLE	⊕
TREES	⊕
CONTROL OF ACCESS	///
PROPERTY LINE	—
R.O.W. TAKING LINE	—
SLOPE RIGHTS	SR
TOP OF CUT	△
TOE OF SLOPE	○

THE FOLLOWING RIGHT OF WAY PLAN SHEETS PERTAIN DIRECTLY TO THE ACQUISITION OF LAND AND RIGHTS NECESSARY TO CONSTRUCT THIS TRANSPORTATION PROJECT. SHEETS REGARDING SPECIFIC CONSTRUCTION DETAILS ARE NOT INCLUDED IN THIS RECORDED SET.

DATUM
VERTICAL NGVD 1929
HORIZONTAL N/A

RIGHT-OF-WAY AGENT OF PROJECT: FRANK J. MALNATI JR.



Lines shown on this plan as existing property lines P/L are believed to be accurate but should not be relied upon for purposes unrelated to the state of Vermont's acquisition of land and rights for this project.

THESE PLANS ARE SUBJECT TO SUCH ENGINEERING CHANGES AS MAY BE REQUIRED BY THE FEDERAL HIGHWAY ADMINISTRATION OR THE DIRECTOR OF PROJECT DEVELOPMENT. CONSTRUCTION IS TO BE CARRIED ON IN ACCORDANCE WITH THESE PLANS AND THE STANDARD SPECIFICATIONS FOR CONSTRUCTION DATED 2001 AS APPROVED BY THE FEDERAL HIGHWAY ADMINISTRATION ON MARCH, 2001 FOR USE ON THIS PROJECT, INCLUDING ALL SUBSEQUENT REVISIONS AND SUCH REVISED SPECIFICATIONS AND SPECIAL PROVISIONS AS ARE INCORPORATED IN THESE PLANS.

Green International Affiliates, Inc.
Consulting Engineers

Pin # 86C027

ALL DRIVES AS INDICATED ON PLANS ARE SUBJECT TO PERMITS PURSUANT TO TITLE 19 SECTION III, V.S.A.

APPROVED: *[Signature]* DATE 3/28/06
Director of Project Development

APPROVED: *[Signature]* DATE 3/28/06
Chief of Right of Way

HARTFORD
RS 0113(40)
R.O.W. SHEET 1 OF 62 SHEETS