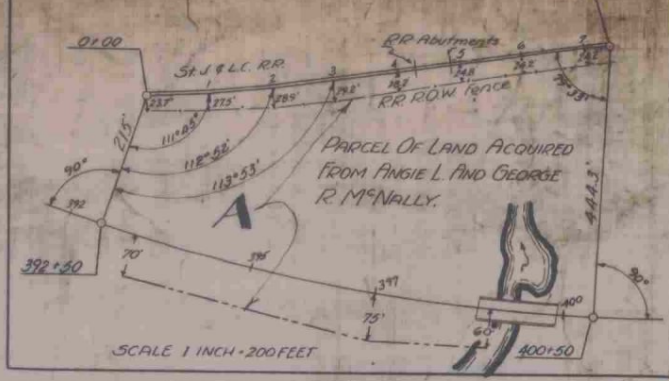


NOTE
 Rock that is encountered in the channel excavation shall be removed at the unit price bid for channel excavation and shall be used as stone fill in front of the abutments, as directed by the Engineer without further compensation. Any rock from channel excavation which is not required for stone fill shall be disposed of on the project as directed by the Engineer without further compensation.



Sta 392+60-398+50 Lt
 cut slope - sand + silt
 PLANT 1500 PINUS RESINOSA (2-2 STOCK) AV. 6%

Sta 393+15-397+75 R
 cut slope - sand + silt
 PLANT 500 PINUS RESINOSA (2-2 STOCK) AV. 6%

MM 2.30
 Sta 399+29.0
 Pier
 Fin. Grade 693.98
 Sta 399+93.0
 Bridge Ends
 Fixed End
 Fin. Grade 693.64

J BAKER

STATION 401+0 - STATION 405+0 LT & RT
 CONSTRUCT 10' SHOULDERS
 BRIDGE DATA

	PRESENT	PROPOSED
TYPE	PONY TRUSS CONC. FL.	2 SPAN W.F.B.M. CONC. FL.
CLEAR SPAN	86.0'	2 @ 60' = 120'
CLEARANCE	7.0'	17.0'
ROADWAY	20.0'	24.0'
OVERALL LTH	95.0'	128.0'
WATERWAY	60.0'	148.0'

BRIDGE STA 398+65.0
 FAP 84A(2) STOPS ROADWAY
 BRIDGE STA 399+93.0
 FAP 84A(2) RESUMES ROADWAY

PARCEL INSTRUMENT	DATE	GRANTOR	GRANTEE	RECORDED	DEMENTS
A	W. A.	5-31-41	GEORGE I. ANGEL & MARYANN STONE	BOOK 27 PAGE 253-54	6-13-41
A	W. D. O.	2-27-41	JOSEPH & GRACE BAKER	57 OF V. 27	2-10-41

Station 392+00 - 398+65
 15' Sub-base of Gravel

Station 399+93 - 405+00
 15' Sub-base of Gravel

PLAN
 DATE
 SCALE
 CHECKED
 DRAWN

PROFILE
 DATE
 SCALE
 CHECKED
 DRAWN