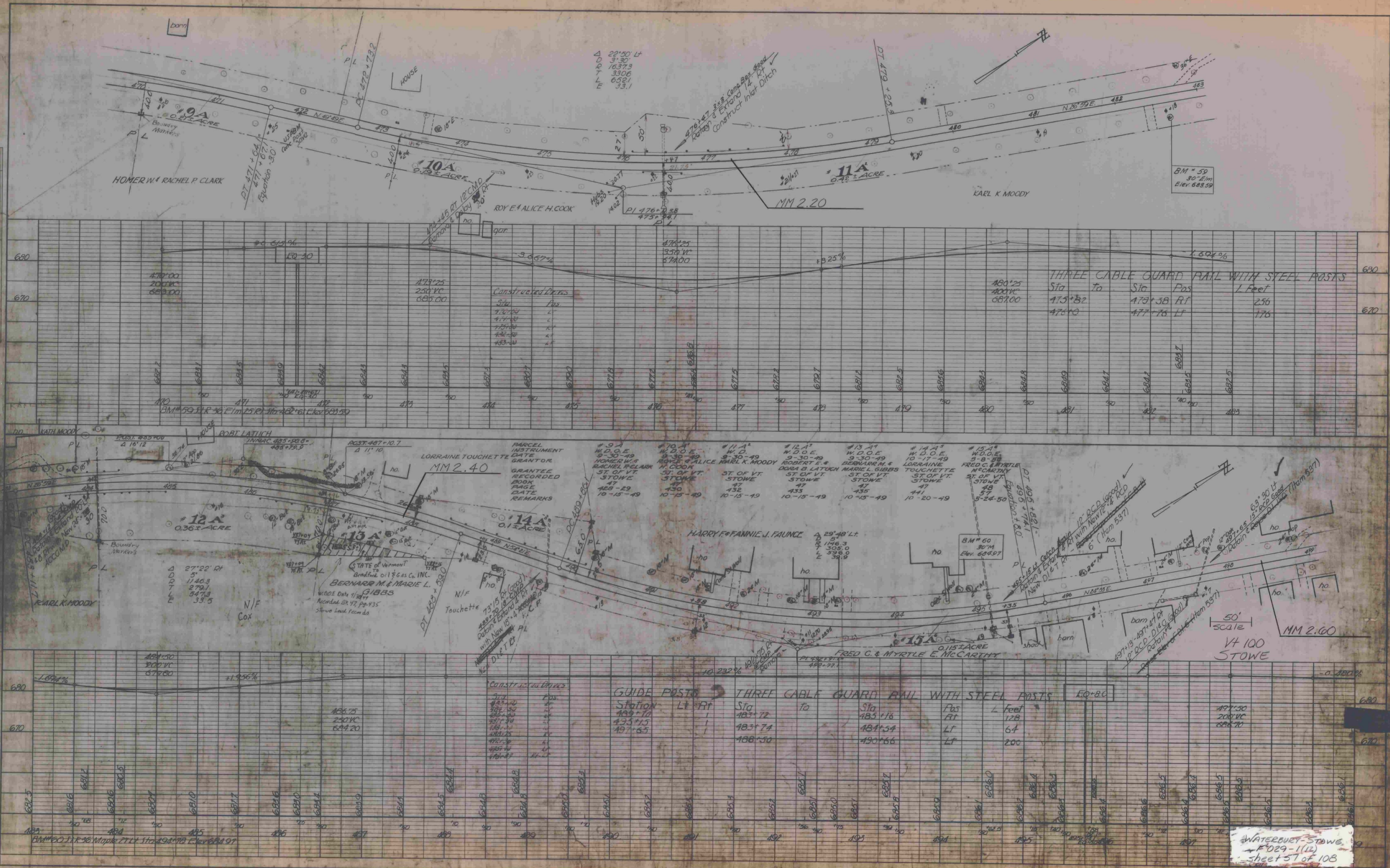


DATE  
BY  
PLW  
CHECKED  
PLOTTER  
NOTE BOOK  
NO.

PROFILE  
DATE  
BY  
NOTE BOOK  
NO.



Constructed Ditches

| Sta    | Flow |
|--------|------|
| 478+00 | L    |
| 478+10 | L    |
| 478+20 | L    |
| 478+30 | L    |
| 478+40 | L    |
| 478+50 | L    |
| 478+60 | L    |
| 478+70 | L    |
| 478+80 | L    |
| 478+90 | L    |
| 479+00 | L    |
| 479+10 | L    |
| 479+20 | L    |
| 479+30 | L    |
| 479+40 | L    |
| 479+50 | L    |
| 479+60 | L    |
| 479+70 | L    |
| 479+80 | L    |
| 479+90 | L    |
| 480+00 | L    |
| 480+10 | L    |
| 480+20 | L    |
| 480+30 | L    |
| 480+40 | L    |
| 480+50 | L    |
| 480+60 | L    |
| 480+70 | L    |
| 480+80 | L    |
| 480+90 | L    |
| 481+00 | L    |
| 481+10 | L    |
| 481+20 | L    |
| 481+30 | L    |
| 481+40 | L    |
| 481+50 | L    |
| 481+60 | L    |
| 481+70 | L    |
| 481+80 | L    |
| 481+90 | L    |
| 482+00 | L    |
| 482+10 | L    |
| 482+20 | L    |
| 482+30 | L    |
| 482+40 | L    |
| 482+50 | L    |
| 482+60 | L    |
| 482+70 | L    |
| 482+80 | L    |
| 482+90 | L    |
| 483+00 | L    |
| 483+10 | L    |
| 483+20 | L    |
| 483+30 | L    |
| 483+40 | L    |
| 483+50 | L    |
| 483+60 | L    |
| 483+70 | L    |
| 483+80 | L    |
| 483+90 | L    |

GUIDE POSTS

| Station | LT | RT |
|---------|----|----|
| 478+70  |    |    |
| 478+74  |    |    |
| 478+78  |    |    |
| 478+82  |    |    |
| 478+86  |    |    |
| 478+90  |    |    |
| 479+00  |    |    |
| 479+10  |    |    |
| 479+20  |    |    |
| 479+30  |    |    |
| 479+40  |    |    |
| 479+50  |    |    |
| 479+60  |    |    |
| 479+70  |    |    |
| 479+80  |    |    |
| 479+90  |    |    |
| 480+00  |    |    |
| 480+10  |    |    |
| 480+20  |    |    |
| 480+30  |    |    |
| 480+40  |    |    |
| 480+50  |    |    |
| 480+60  |    |    |
| 480+70  |    |    |
| 480+80  |    |    |
| 480+90  |    |    |
| 481+00  |    |    |
| 481+10  |    |    |
| 481+20  |    |    |
| 481+30  |    |    |
| 481+40  |    |    |
| 481+50  |    |    |
| 481+60  |    |    |
| 481+70  |    |    |
| 481+80  |    |    |
| 481+90  |    |    |
| 482+00  |    |    |
| 482+10  |    |    |
| 482+20  |    |    |
| 482+30  |    |    |
| 482+40  |    |    |
| 482+50  |    |    |
| 482+60  |    |    |
| 482+70  |    |    |
| 482+80  |    |    |
| 482+90  |    |    |
| 483+00  |    |    |
| 483+10  |    |    |
| 483+20  |    |    |
| 483+30  |    |    |
| 483+40  |    |    |
| 483+50  |    |    |
| 483+60  |    |    |
| 483+70  |    |    |
| 483+80  |    |    |
| 483+90  |    |    |

THREE CABLE GUARD RAIL WITH STEEL POSTS

| Sta    | To | Sta    | To | Pos | L Feet |
|--------|----|--------|----|-----|--------|
| 478+72 |    | 485+16 |    | RT  | 128    |
| 478+74 |    | 481+54 |    | LT  | 64     |
| 478+78 |    | 490+66 |    | LT  | 200    |

EQ+80

| Sta    | To | Sta    | To | Pos | L Feet |
|--------|----|--------|----|-----|--------|
| 478+72 |    | 485+16 |    | RT  | 128    |
| 478+74 |    | 481+54 |    | LT  | 64     |
| 478+78 |    | 490+66 |    | LT  | 200    |

WATERBURY STONE  
F029-1(12)  
Sheet 57 of 108  
Sheet 5 of 11