

Bituminous Concrete
Curb, Type A
10+120.00 - 10+163.60 Lt.

Manufactured Terminal Section, Flared
10+245.08 - 10+256.19 Rt.

Removal and Disposal of Guardrail
10+120.00 - 10+180.00 Rt.
10+227.00 - 10+243.00 Rt.

Construct Drive
10+260.00 Rt - 35M Gravel,
w/2.0M Paved Apron, 10.6M Wide

HD Steel Beam Guardrail, Galvanized *

10+120.00 - 10+165.10 Lt.
10+120.00 - 20+045.00 Rt. (10+154.19 Rt.)
20+045.00 Lt. (10+160.44 Rt.) - 10+165.52 Rt.
10+231.21 - 10+242.40 Rt.
10+231.62 - 10+275.00 Lt.

* SEE RAILING LAYOUT SHEET
FOR BRIDGE AND APPROACH RAIL LIMITS

SEE DRAINAGE DETAIL SHEET
FOR DRAINAGE FLAG DESCRIPTIONS



Construct Infiltration Basin/Plunge Pool
10+170.000 Rt.

Disconnection Area
per Stormwater Permit #4233-INDS
10+223 - 10+275 Lt.

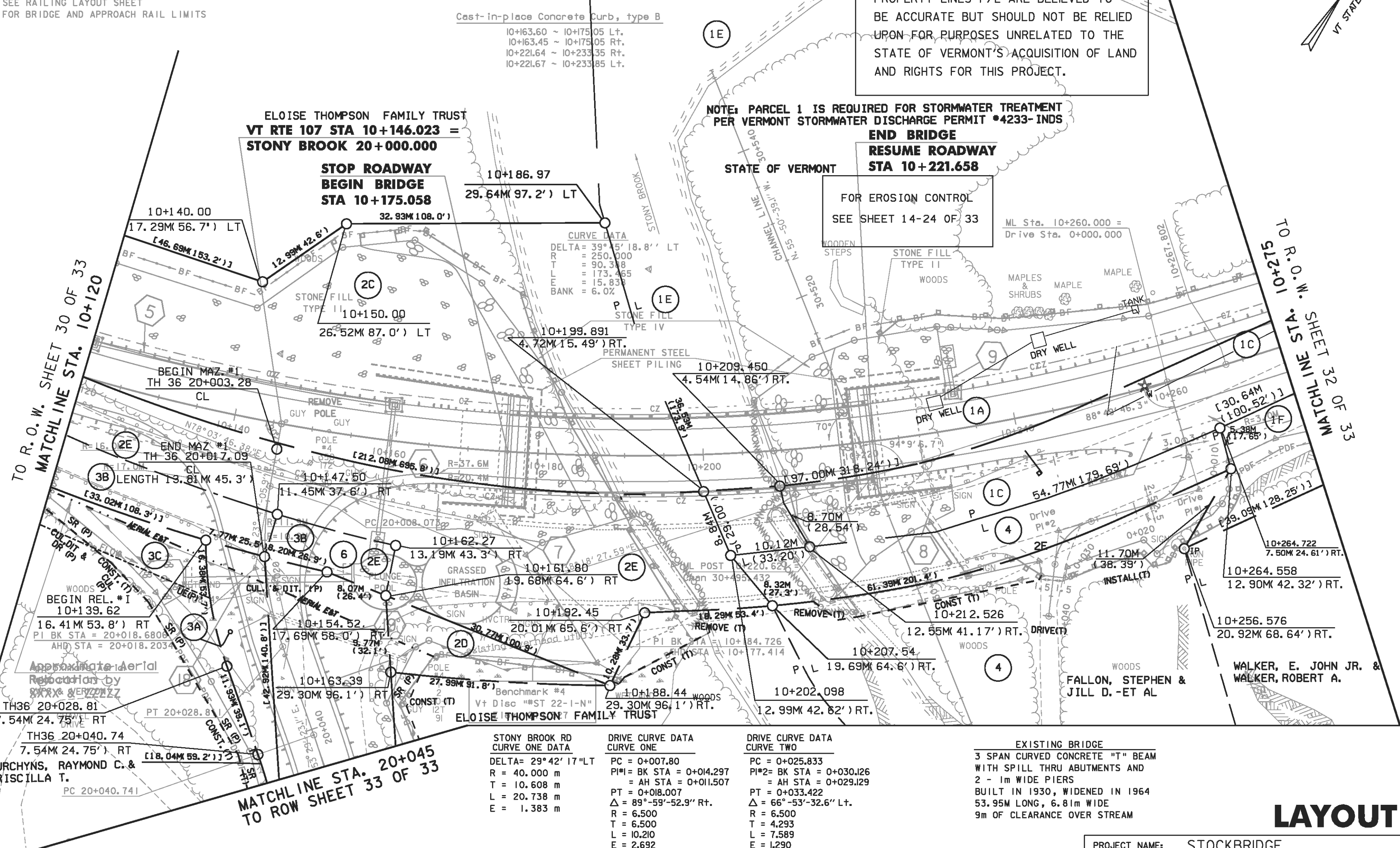
WHITE RIVER

LINES SHOWN ON THIS PLAN AS EXISTING
PROPERTY LINES P/L ARE BELIEVED TO
BE ACCURATE BUT SHOULD NOT BE RELIED
UPON FOR PURPOSES UNRELATED TO THE
STATE OF VERMONT'S ACQUISITION OF LAND
AND RIGHTS FOR THIS PROJECT.

NOTE: PARCEL 1 IS REQUIRED FOR STORMWATER TREATMENT
PER VERMONT STORMWATER DISCHARGE PERMIT #4233-INDS

END BRIDGE
RESUME ROADWAY
STA 10+221.658

FOR EROSION CONTROL
SEE SHEET 14-24 OF 33



Approximate Aerial
Relocation by
SIXX & ERZENZ
TH36 20+028.81
7.54M 24.75' RT
TH36 20+040.74
7.54M 24.75' RT
BURCHYNS, RAYMOND C. &
PRISCILLA T.
PC 20+040.741

MATCHLINE STA. 20+045
TO ROW SHEET 33 OF 33

STONY BROOK RD
CURVE ONE DATA
DELTA= 29°42'17"LT
R = 40.000 m
T = 10.608 m
L = 20.738 m
E = 1.383 m

DRIVE CURVE DATA
CURVE ONE
PC = 0+007.80
PI#1= BK STA = 0+014.297
= AH STA = 0+011.507
PT = 0+018.007
Δ = 89°-59'-52.9" Rt.
R = 6.500
T = 6.500
L = 10.210
E = 2.692
Bearings
S. 50°-31'-12.9" E. bk
S. 39°-28'-40.0" W. ah

DRIVE CURVE DATA
CURVE TWO
PC = 0+025.833
PI#2= BK STA = 0+030.126
= AH STA = 0+029.129
PT = 0+033.422
Δ = 66°-53'-32.6" Lt.
R = 6.500
T = 4.293
L = 7.589
E = 1.290
Bearings
S. 39°-28'-40.0" W. bk
S. 27°-24'-52.7" E. ah

EXISTING BRIDGE
3 SPAN CURVED CONCRETE "T" BEAM
WITH SPILL THRU ABUTMENTS AND
2 - 1m WIDE PIERS
BUILT IN 1930, WIDENED IN 1964
53.95M LONG, 6.81m WIDE
9m OF CLEARANCE OVER STREAM

FOR R.O.W.
USE ONLY



PROJECT NAME: STOCKBRIDGE
PROJECT NUMBER: BRF 022-I(20)

FILE NAME: 85e039/de039bdr.dgn
PROJECT LEADER: C. P. Williams
DESIGNED BY: R. S. YOUNG
ROW SHEET 31 OF 33

LAYOUT 3

PLOT DATE: 04-MAR-2010
DRAWN BY: H. I. SALLS
CHECKED BY: R.S. Young
SHEET 92 OF 139