

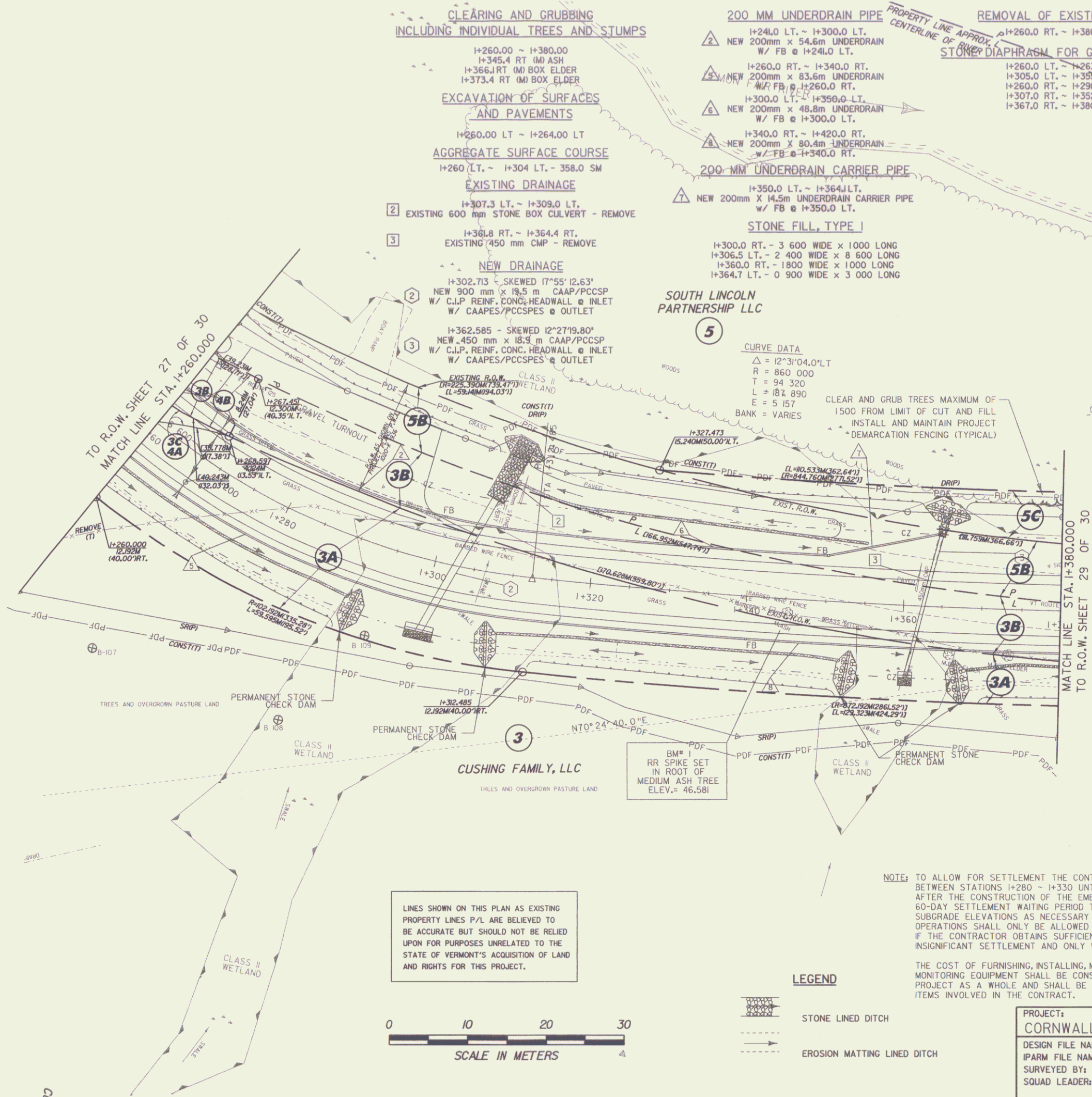


- CLEARING AND GRUBBING INCLUDING INDIVIDUAL TREES AND STUMPS**
 I+260.00 ~ I+380.00
 I+345.4 RT (M) ASH
 I+366.1 RT (M) BOX ELDER
 I+373.4 RT (M) BOX ELDER
- EXCAVATION OF SURFACES AND PAVEMENTS**
 I+260.00 LT ~ I+264.00 LT
- AGGREGATE SURFACE COURSE**
 I+260 LT. ~ I+304 LT. - 358.0 SM
- EXISTING DRAINAGE**
 I+307.3 LT. ~ I+309.0 LT.
 I+381.8 RT. ~ I+364.4 RT.
 EXISTING 600 mm STONE BOX CULVERT - REMOVE
- NEW DRAINAGE**
 I+302.713 - SKEWED 17°55' 12.63"
 NEW 900 mm x 18.5 m CAAP/PCCSP
 W/ C.J.P. RENF. CONC. HEADWALL @ INLET
 W/ CAAPES/PCCSPES @ OUTLET
 I+362.585 - SKEWED 12°27'19.80"
 NEW 450 mm x 18.5 m CAAP/PCCSP
 W/ C.J.P. RENF. CONC. HEADWALL @ INLET
 W/ CAAPES/PCCSPES @ OUTLET
- 200 MM UNDERDRAIN PIPE**
 I+241.0 LT. ~ I+300.0 LT.
 NEW 200mm x 54.6m UNDERDRAIN
 W/ FB @ I+241.0 LT.
 I+260.0 RT. ~ I+340.0 RT.
 NEW 200mm x 83.6m UNDERDRAIN
 W/ FB @ I+260.0 RT.
 I+300.0 LT. ~ I+350.0 LT.
 NEW 200mm x 48.8m UNDERDRAIN
 W/ FB @ I+300.0 LT.
 I+340.0 RT. ~ I+420.0 RT.
 NEW 200mm x 80.4m UNDERDRAIN
 W/ FB @ I+340.0 RT.
- 200-MM UNDERDRAIN CARRIER PIPE**
 I+350.0 LT. ~ I+364.1 LT.
 NEW 200mm x 14.5m UNDERDRAIN CARRIER PIPE
 W/ FB @ I+350.0 LT.
- STONE FILL, TYPE I**
 I+300.0 RT. - 3 600 WIDE x 1000 LONG
 I+306.5 LT. - 2 400 WIDE x 8 600 LONG
 I+360.0 RT. - 1800 WIDE x 1000 LONG
 I+364.7 LT. - 0 900 WIDE x 3 000 LONG
- REMOVAL OF EXISTING FENCE**
 I+260.0 RT. ~ I+380.0 RT.
- STONE DIAPHRAGM FOR GRASS CHANNELS**
 I+260.0 LT. ~ I+263.0 LT.
 I+305.0 LT. ~ I+350.0 LT.
 I+260.0 RT. ~ I+290.0 RT.
 I+307.0 RT. ~ I+352.0 RT.
 I+367.0 RT. ~ I+380.0 RT.

SOUTH LINCOLN PARTNERSHIP LLC

CURVE DATA
 $\Delta = 12^{\circ}31'04.01''$
 $R = 860.000$
 $T = 94.320$
 $L = 184.890$
 $E = 5.157$
 BANK = VARIES

CLEAR AND GRUB TREES MAXIMUM OF 1500 FROM LIMIT OF CUT AND FILL
 INSTALL AND MAINTAIN PROJECT DEMARCATION FENCING (TYPICAL)



LINES SHOWN ON THIS PLAN AS EXISTING PROPERTY LINES P/L ARE BELIEVED TO BE ACCURATE BUT SHOULD NOT BE RELIED UPON FOR PURPOSES UNRELATED TO THE STATE OF VERMONT'S ACQUISITION OF LAND AND RIGHTS FOR THIS PROJECT.



- LEGEND**
- STONE LINED DITCH
 - EROSION MATTING LINED DITCH

NOTE: TO ALLOW FOR SETTLEMENT THE CONTRACTOR SHALL NOT PERFORM PAVING OPERATIONS BETWEEN STATIONS I+280 ~ I+330 UNTIL A WAITING PERIOD OF 60 DAYS HAS PASSED AFTER THE CONSTRUCTION OF THE EMBANKMENTS AND SUBBASE. UPON COMPLETION OF THE 60-DAY SETTLEMENT WAITING PERIOD THE CONTRACTOR SHALL VERIFY AND RE-ESTABLISH SUBGRADE ELEVATIONS AS NECESSARY OR AS DIRECTED BY THE RESIDENT ENGINEER. PAVING OPERATIONS SHALL ONLY BE ALLOWED PRIOR TO THE END OF THE 60-DAY WAITING PERIOD IF THE CONTRACTOR OBTAINS SUFFICIENT SETTLEMENT DATA THAT INDICATES INSIGNIFICANT SETTLEMENT AND ONLY WHEN IT IS APPROVED BY THE RESIDENT ENGINEER.

THE COST OF FURNISHING, INSTALLING, MONITORING AND MAINTAINING SETTLEMENT MONITORING EQUIPMENT SHALL BE CONSIDERED SUBSIDIARY WORK PERTAINING TO THE PROJECT AS A WHOLE AND SHALL BE INCLUDED IN THE CONTRACT UNIT PRICE FOR VARIOUS ITEMS INVOLVED IN THE CONTRACT.

DATUM

VERTICAL	NAVD 88
HORIZONTAL	NAD 83(92)

PROJECT: CORNWALL	PROJECT NO.: BRS 0172(6)
DESIGN FILE NAME: *****FILENAME***	PLOT DATE: 15-JAN-2009
IPARM FILE NAME:	SURVEY DATE: 1996&1999
SURVEYED BY: VTRANS & VT SURVEY	DRAWN BY: ERIK ATKINS
SQUAD LEADER: MARTHA EVANS-MONGEON	ROW SHEET 28 OF 30

ROADWAY LAYOUT SHEET 3