

EXCAVATION OF SURFACES AND PAVEMENTS

3+040.00 ~ 3+060.00

AGGREGATE SURFACE COURSE

3+040.000 ~ 3+112.764

(SEE NOTE 4)

STONE FILL, TYPE II

3+112.764 ~ 3+120.394 - SLOPE STABILIZATION

3+163.713 ~ 3+170.676 - SLOPE STABILIZATION

ENERGY ABSORPTION ATTENUATOR

3+040.000 RT - 1 EACH

3+060.000 LT - 1 EACH

TEMPORARY TRAFFIC BARRIER

3+040.000 RT ~ 3+112.764 RT

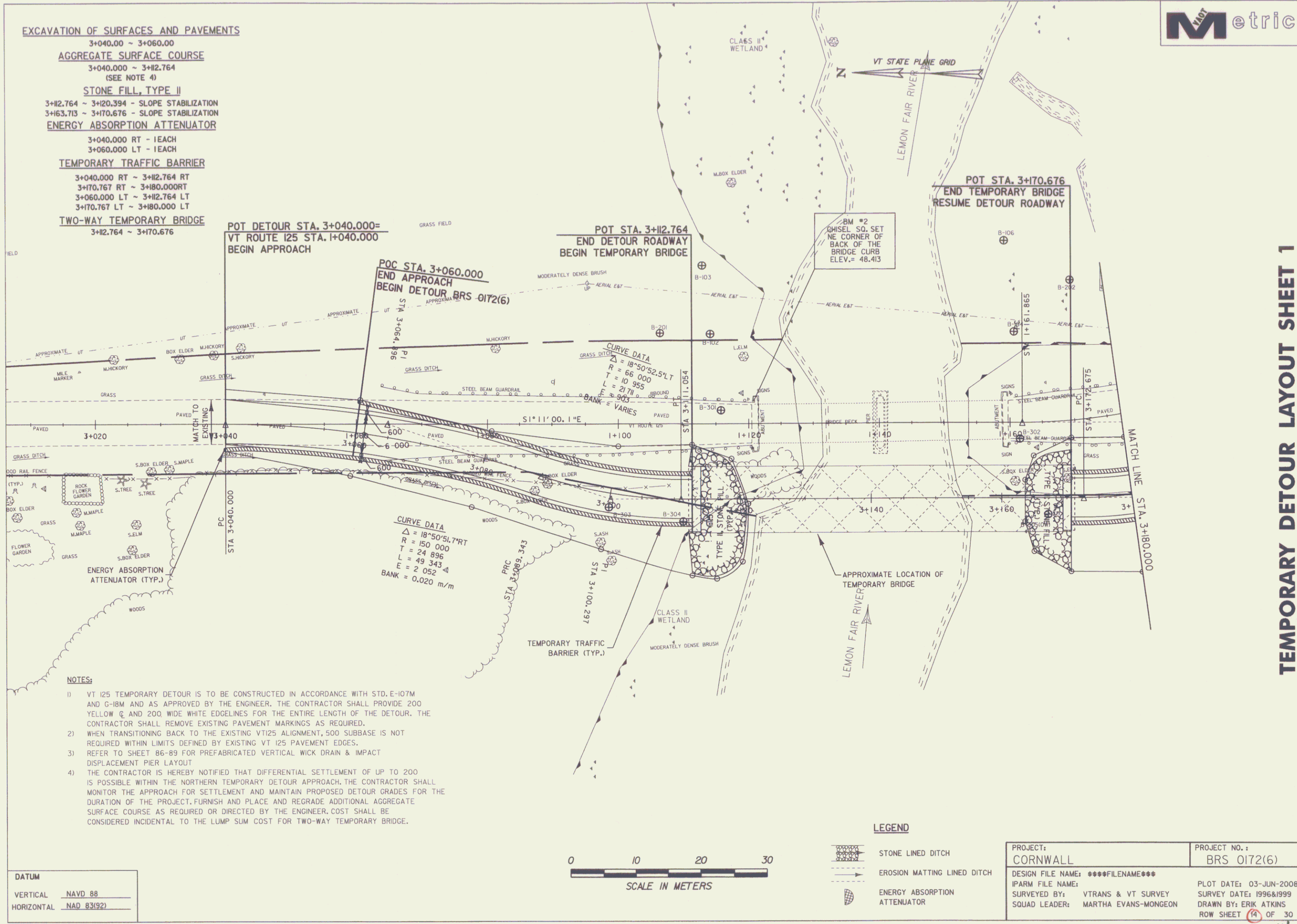
3+170.767 RT ~ 3+180.000 RT

3+060.000 LT ~ 3+112.764 LT

3+170.767 LT ~ 3+180.000 LT

TWO-WAY TEMPORARY BRIDGE

3+112.764 ~ 3+170.676



TEMPORARY DETOUR LAYOUT SHEET 1

NOTES:

- 1) VT 125 TEMPORARY DETOUR IS TO BE CONSTRUCTED IN ACCORDANCE WITH STD. E-107M AND G-16M AND AS APPROVED BY THE ENGINEER. THE CONTRACTOR SHALL PROVIDE 200 YELLOW C AND 200 WIDE WHITE EDEGLINES FOR THE ENTIRE LENGTH OF THE DETOUR. THE CONTRACTOR SHALL REMOVE EXISTING PAVEMENT MARKINGS AS REQUIRED.
- 2) WHEN TRANSITIONING BACK TO THE EXISTING VT125 ALIGNMENT, 500 SUBBASE IS NOT REQUIRED WITHIN LIMITS DEFINED BY EXISTING VT 125 PAVEMENT EDGES.
- 3) REFER TO SHEET 86-89 FOR PREFABRICATED VERTICAL WICK DRAIN & IMPACT DISPLACEMENT PIER LAYOUT
- 4) THE CONTRACTOR IS HEREBY NOTIFIED THAT DIFFERENTIAL SETTLEMENT OF UP TO 200 IS POSSIBLE WITHIN THE NORTHERN TEMPORARY DETOUR APPROACH. THE CONTRACTOR SHALL MONITOR THE APPROACH FOR SETTLEMENT AND MAINTAIN PROPOSED DETOUR GRADES FOR THE DURATION OF THE PROJECT. FURNISH AND PLACE AND REGRADE ADDITIONAL AGGREGATE SURFACE COURSE AS REQUIRED OR DIRECTED BY THE ENGINEER. COST SHALL BE CONSIDERED INCIDENTAL TO THE LUMP SUM COST FOR TWO-WAY TEMPORARY BRIDGE.

DATUM	
VERTICAL	NAVD 88
HORIZONTAL	NAD 83(92)



LEGEND

- STONE LINED DITCH
- EROSION MATTING LINED DITCH
- ENERGY ABSORPTION ATTENUATOR

PROJECT: CORNWALL	PROJECT NO.: BRS 0172(6)
DESIGN FILE NAME: *****FILENAME***	PLOT DATE: 03-JUN-2008
IPARM FILE NAME:	SURVEY DATE: 1996&1999
SURVEYED BY: VTRANS & VT SURVEY	DRAWN BY: ERIK ATKINS
SQUAD LEADER: MARTHA EVANS-MONGEON	ROW SHEET 14 OF 30