

GPS CONTROL POINTS

**HVCTRL #1**

ROBINSON  
 NORTH = 494869.735  
 EAST = 1543279.273  
 ELEV. = 983.807

GENERAL LOCATION, ROCHESTER, VT. OWNERSHIP, RAY GENDRON, 3425 BRANDON MOUNTAIN ROAD, ROCHESTER, VT 05767.

TO REACH FROM THE INTERSECTION OF VT ROUTE 100 AND VT ROUTE 73 (BRANDON MOUNTAIN ROAD) GO WEST ALONG VT ROUTE 73 FOR 3.7 MI (6.0 KM) TO THE INTERSECTION OF A GRAVEL FIELD DRIVE AND THE SITE OF THE MARK ON THE RIGHT. IT IS 0.2 MI (0.3 KM) EAST OF THE INTERSECTION OF VT ROUTE 73 AND BINGO ROAD IN ROBINSON.

THE MARK IS SET 10 CM (4 INCHES) BELOW GROUND SURFACE IN THE TOP OF A 30 CM (12 INCH) DIAMETER CONCRETE MONUMENT. IT IS 9.0 M (29.5 FT) NORTHEAST OF AND 1.0 M (3.3 FT) LOWER THAN THE CENTERLINE OF VT ROUTE 73, 4.2 M (13.8 FT) NORTHWEST OF THE CENTERLINE OF THE FIELD DRIVE, 2.8 M (9.2 FT) SOUTH OF THE CENTER OF THE NORTHEAST (OUTLET) END OF A 45 CM (18 INCH) DIAMETER PLASTIC CULVERT WITH MARKER POST, 28.9 M (94.8 FT) NORTHEAST OF AND ACROSS THE ROAD FROM POLE NO 104A/1 AT HOUSE NO 3677, 17.8 M (58.4 FT) SOUTHWEST OF POLE NO 104/106 AND 0.3 M (1.0 FT) SOUTHWEST OF A FIBERGLASS WITNESS POST.

**HVCTRL #2**

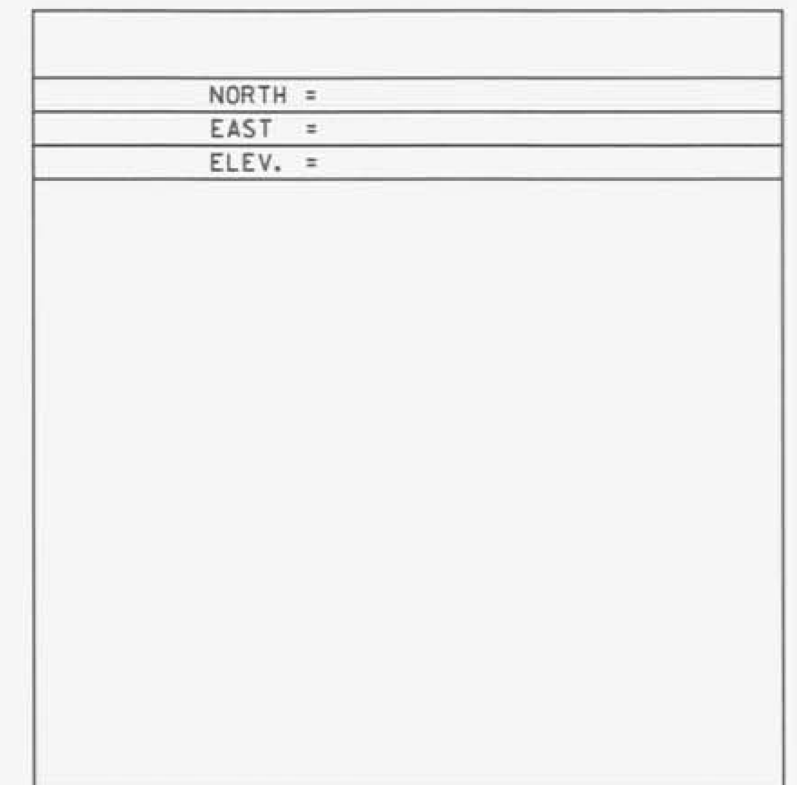
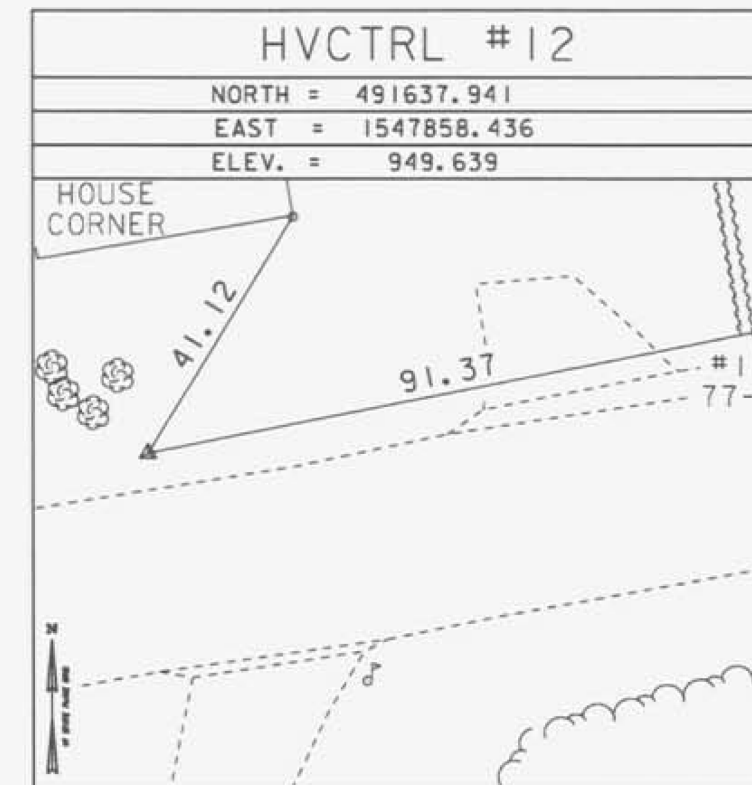
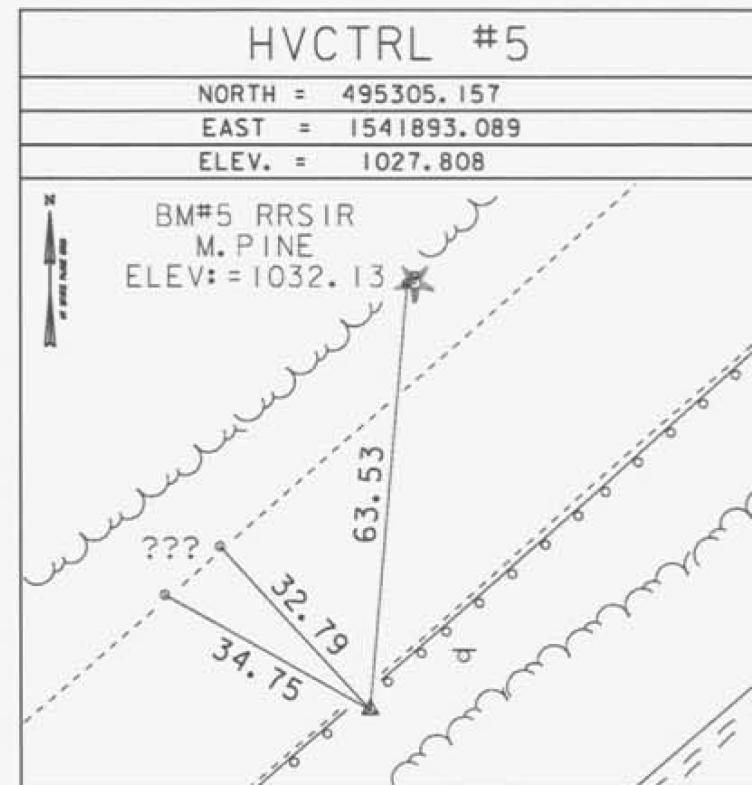
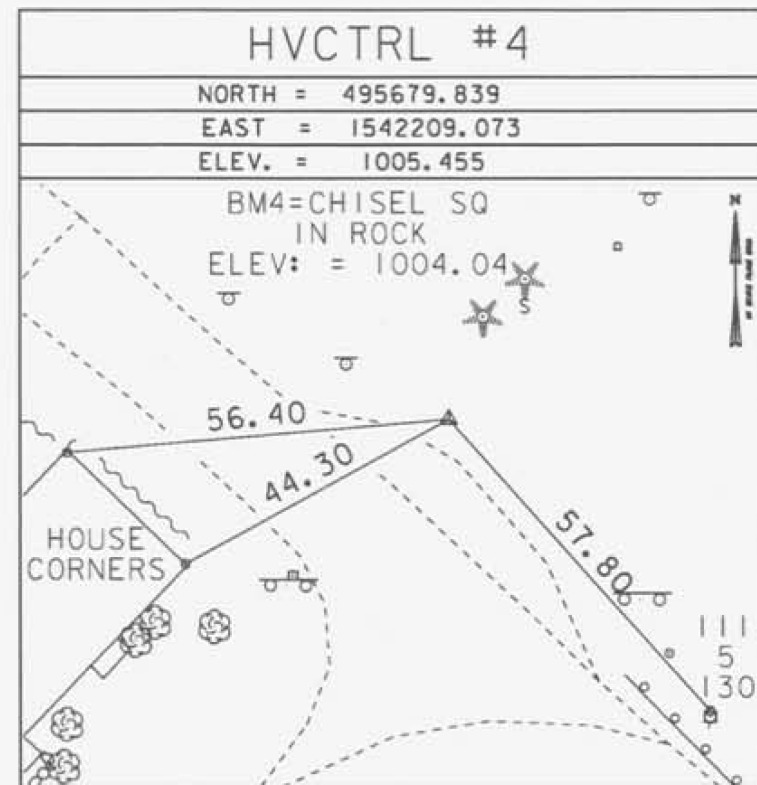
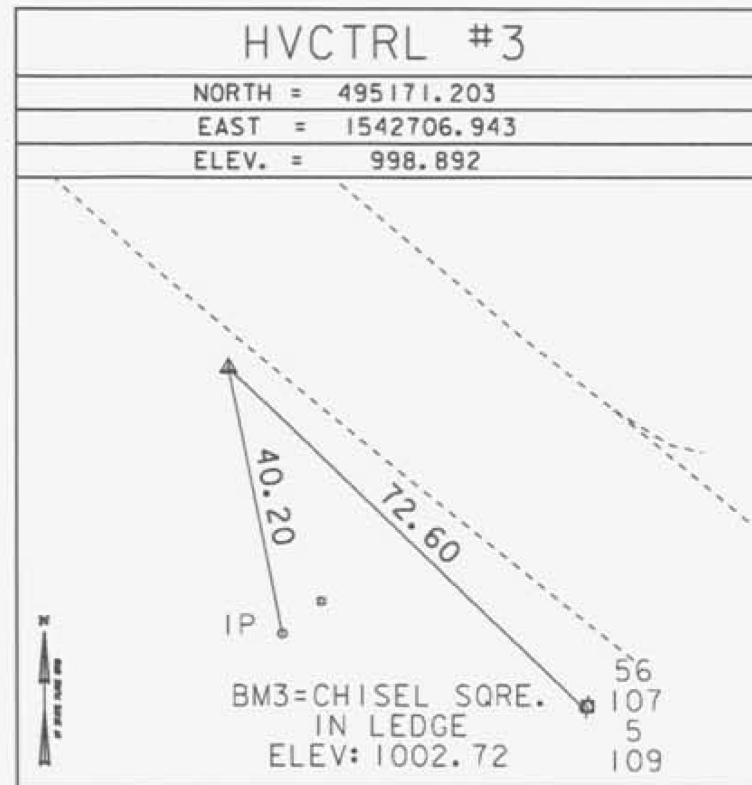
ROBINSON AZ MK  
 NORTH = 492231.351  
 EAST = 1545550.869  
 ELEV. = 948.984

GENERAL LOCATION, ROCHESTER, VT.

TO REACH FROM THE INTERSECTION OF VT ROUTE 100 AND VT ROUTE 73 (BRANDON MOUNTAIN ROAD) GO WEST ALONG VT ROUTE 73 FOR 3.0 MI (4.8 KM) TO THE SITE OF THE MARK ON THE RIGHT. IT IS 0.9 MI (1.4 KM) EAST OF THE INTERSECTION OF VT ROUTE 73 AND BINGO ROAD IN ROBINSON AND ABOUT 150 M (492.1 FT) NORTHWEST OF THE DRIVE LEADING TO A PARKING AREA FOR THE CLOSING CORNER CAMP AT THE GREEN MOUNTAIN NATIONAL FOREST (WHITE RIVER TRAVEL WAY) TRAIL.

THE MARK IS SET 20 CM (8 INCHES) BELOW GROUND SURFACE IN THE TOP OF A 30 CM (12 INCH) DIAMETER CONCRETE MONUMENT. IT IS 7.2 M (23.6 FT) NORTHEAST OF AND 0.5 M (1.6 FT) LOWER THAN THE CENTERLINE OF VT ROUTE 73, 21.0 M (68.9 FT) NORTHWEST OF THE CENTER OF THE NORTHEAST (OUTLET) END OF A 90 CM (35 INCH) DIAMETER PLASTIC CULVERT, 25.6 M (84.0 FT) EAST OF AND ACROSS THE ROAD FROM POLE NO 88/5/90, 44.0 M (144.4 FT) NORTH OF AND ACROSS THE ROAD FROM A SIGN FOR THE CAMP, ABOUT 60 M (196.9 FT) WEST OF THE CENTER OF A SMALL BRIDGE WITH STONE HEADWALL AND 0.3 M (1.0 FT) SOUTHWEST OF A FIBERGLASS WITNESS POST.

TRAVERSE TIES



\*MAIN TRAVERSE COMPLETED 6/15/2011 BY L. ORVIS P.C. & G. HITCHCOCK

DATUM	
VERTICAL	NAVD 88
HORIZONTAL	NAD 83 (07)
ADJUSTMENT	COMPASS

PROJECT NAME:	ROCHESTER
PROJECT NUMBER:	BRF 0162(17)
FILE NAME:	r85e035_tie.dgn
PROJECT LEADER:	J. FITCH
DESIGNED BY:	VTRANS
TIE SHEET	
PLOT DATE:	25-MAR-2013
DRAWN BY:	R. BULLOCK
CHECKED BY:	VTRANS
SHEET	8 OF 12