

**GUARDRAIL APPROACH SECTION,
GALVANIZED 2 RAIL BOX BEAM**
STA. 333+37 - 333+66 LT
STA. 333+70 - 333+80 RT
STA. 334+28 - 334+52 LT
STA. 334+42 - 334+71 RT

**BRIDGE RAILING, GALVANIZED
2 RAIL BOX BEAM**
STA. 333+66 - 334+28 LT
STA. 333+80 - 334+42 RT

**MANUFACTURED TERMINAL SECTION,
TANGENT**
STA. 332+30 - 332+81 LT

CONSTRUCT 8.0' PAVED APRON
STA. 334+72, LT - 55.0' WIDE
CONSTRUCT 5.0' PAVED APRON
STA. 333+64, RT - 28.0' WIDE
STA. 335+06, RT - 16.5' WIDE

CONSTRUCT 10.0' GRAVEL DRIVE
STA. 334+66, LT - 10.0' WIDE
CONSTRUCT 13.0' GRAVEL DRIVE
STA. 333+64, RT - 13.0' WIDE

CONSTRUCT 16.5' GRAVEL DRIVE
STA. 335+06, RT - 16.5' WIDE

**CAST-IN-PLACE
CONCRETE CURB, TYPE B**
STA. 333+34 - 333+67 LT
STA. 333+69 - 333+80 RT
STA. 334+28 - 334+50 LT
STA. 334+41 - 334+82 RT

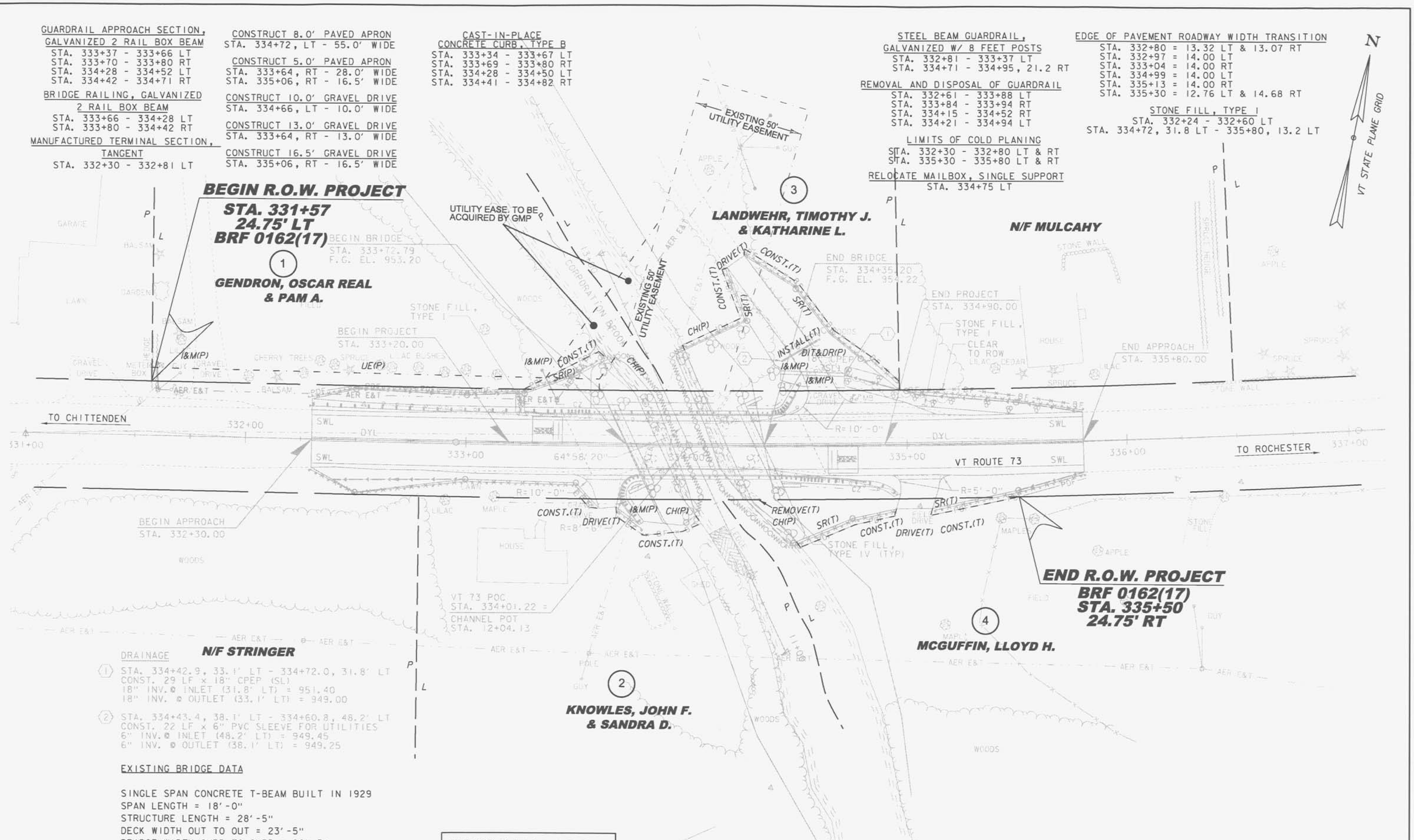
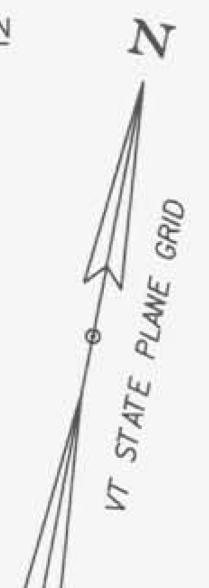
**STEEL BEAM GUARDRAIL,
GALVANIZED W/ 8 FEET POSTS**
STA. 332+81 - 333+37 LT
STA. 334+71 - 334+95, 21.2 RT

REMOVAL AND DISPOSAL OF GUARDRAIL
STA. 332+61 - 333+88 LT
STA. 333+84 - 333+94 RT
STA. 334+15 - 334+52 RT
STA. 334+21 - 334+94 LT

LIMITS OF COLD PLANING
STA. 332+30 - 332+80 LT & RT
STA. 335+30 - 335+80 LT & RT
RELOCATE MAILBOX, SINGLE SUPPORT
STA. 334+75 LT

EDGE OF PAVEMENT ROADWAY WIDTH TRANSITION
STA. 332+80 = 13.32 LT & 13.07 RT
STA. 332+97 = 14.00 LT
STA. 333+04 = 14.00 RT
STA. 334+99 = 14.00 LT
STA. 335+13 = 14.00 RT
STA. 335+30 = 12.76 LT & 14.68 RT

STONE FILL, TYPE I
STA. 332+24 - 332+60 LT
STA. 334+72, 31.8 LT - 335+80, 13.2 LT



**BEGIN R.O.W. PROJECT
STA. 331+57
24.75' LT
BRF 0162(17)**
**GENDRON, OSCAR REAL
& PAM A.**

**LANDWEHR, TIMOTHY J.
& KATHARINE L.**

N/F MULCAHY

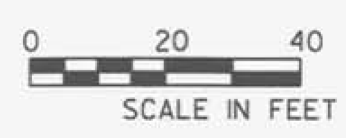
**END R.O.W. PROJECT
BRF 0162(17)
STA. 335+50
24.75' RT**
MCGUFFIN, LLOYD H.

**KNOWLES, JOHN F.
& SANDRA D.**

DRAINAGE
N/F STRINGER
① STA. 334+42.9, 33.1' LT - 334+72.0, 31.8' LT
CONST. 29 LF x 18" CPEP (SL)
18" INV. Ø INLET (31.8' LT) = 951.40
18" INV. Ø OUTLET (33.1' LT) = 949.00
② STA. 334+43.4, 38.1' LT - 334+60.8, 48.2' LT
CONST. 22 LF x 6" PVC SLEEVE FOR UTILITIES
6" INV. Ø INLET (48.2' LT) = 949.45
6" INV. Ø OUTLET (38.1' LT) = 949.25

EXISTING BRIDGE DATA
SINGLE SPAN CONCRETE T-BEAM BUILT IN 1929
SPAN LENGTH = 18'-0"
STRUCTURE LENGTH = 28'-5"
DECK WIDTH OUT TO OUT = 23'-5"
BRIDGE WIDTH CURB TO CURB = 20'-3"

LINES SHOWN ON THIS PLAN AS EXISTING
PROPERTY LINES P/L ARE BELIEVED TO
BE ACCURATE BUT SHOULD NOT BE RELIED
UPON FOR PURPOSES UNRELATED TO THE
STATE OF VERMONT'S ACQUISITION OF LAND
AND RIGHTS FOR THIS PROJECT.



**FOR R.O.W.
USE ONLY**

PROJECT NAME: ROCHESTER
PROJECT NUMBER: BRF 0162(17)
FILE NAME: r85e035_layout.dgn
PROJECT LEADER: J. FITCH
DESIGNED BY: C.L. CILLEY
ROW LAYOUT SHEET 1 OF 1
PLOT DATE: 25-MAR-2013
DRAWN BY: J. BLANCHARD
CHECKED BY: H. PETROVS
SHEET 4 OF 12