

CONSTRUCT DRIVES
 STA 11+75 LT (PAVED) (DRIVE 1)
 DR 1 STA 60+53 RT (PAVED APRON 30 FEET)
 DR 2 STA 51+2 LT (GRAVEL)
MODIFIED ECCENTRIC LOADER
TERMINAL (MELT) WITH WOOD POSTS
 STA 11+63 - 11+97 RT
 STA 13+11 - 13+46 LT
HEAVY DUTY STEEL BEAM GUARD RAIL
 STA 11+97 - 13+34 RT
 STA 14+65 - 14+75 RT
GUARD RAIL - APPROACH
SECTION NETC TWO RAIL
 STA 13+34 - 13+64 RT
 STA 13+46 - 13+75 LT
 STA 14+35 - 14+65 RT
 STA 14+56 - 14+75 LT
CONSTRUCT FIELD STONE WALKWAY
 DR 2 STA 50+48 LT - DR 2 STA 50+91 LT
CONSTRUCT SPECIAL DITCH
 M STA 12+11 LT - M STA 12+76 LT

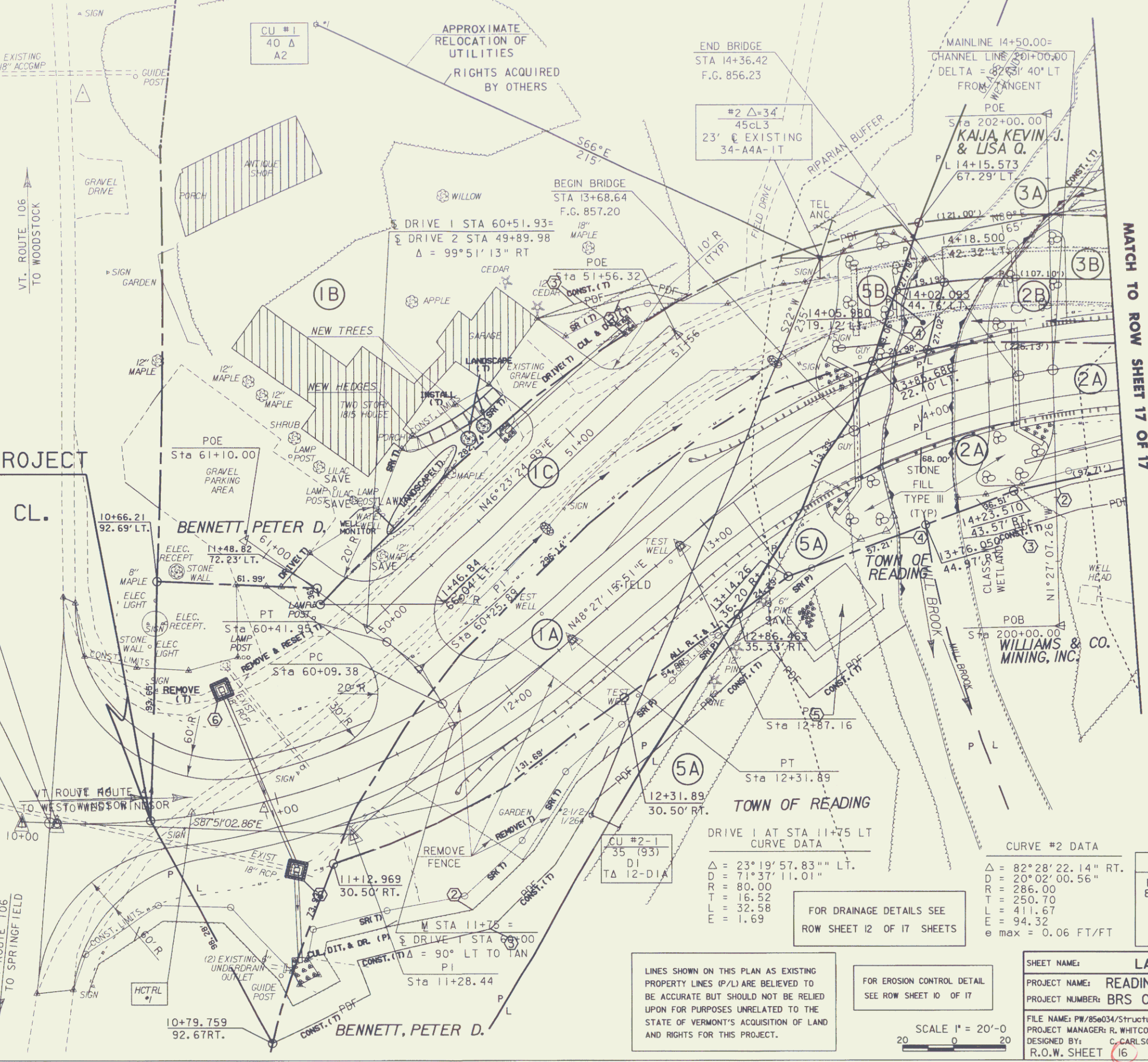
BRIDGE RAILING
NETC BRIDGE RAIL
 STA 13+64 - 14+35 RT
 STA 13+75 - 14+56 LT
TREATED TIMBER CURB
 STA 13+18 - 13+64 RT
 STA 13+39 - 13+75 LT
 STA 14+35 - 14+75 RT
 STA 14+56 - 14+75 LT
REMOVE TREES
 STA 50+54 RT (MAPLE)
REMOVE HEDGES
 STA 60+71 RT - STA 50+61 LT (EVERGREENS)

CURVE #1 DATA
 $\Delta = 43^\circ 41' 41.62''$ LT.
 $D = 20^\circ 02' 00.56''$
 $R = 286.00$
 $T = 114.67$
 $L = 22.13$
 $e_{max} = 0.06$ FT/FT
NEW CEDAR HEDGES
 STA 50+21 LT - STA 50+64 LT
NEW DECIDUOUS TREES (MAPLE)
 STA 50+69 LT (10/S 26 FT)
 STA 50+77.3 LT (10/S 25.8 FT)

BEGIN R.O.W. PROJECT
BRS 0148(6) S
STA. 10+50.000 CL.

BEGIN PROJECT
 STA 10+11.00
POB
 Sta 10+00.00

PC
 Sta 10+13.78
VT ROUTE 106 TO WOODSTOCK
VT ROUTE 106 TO SPRINGFIELD



MATCH TO ROW SHEET 17 OF 17

FOR R.O.W. USE ONLY

EXISTING BRIDGE DATA	
BUILT IN 1934 - TWO SPAN BRIDGE	
8" CONCRETE DECK W/ STEEL BEAM	
SKELETAL ABUTMENTS	
TOTAL SPAN=18 FEET.	
CURB TO CURB=20.2 FEET	
FASCIA TO FASCIA=23.4 FEET	

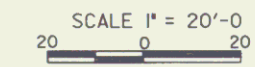
DRIVE 1 AT STA 11+75 LT CURVE DATA	
$\Delta = 23^\circ 19' 57.83''$ LT.	
$D = 71^\circ 37' 11.01''$	
$R = 80.00$	
$T = 16.52$	
$L = 32.58$	
$E = 1.69$	

CURVE #2 DATA	
$\Delta = 82^\circ 28' 22.14''$ RT.	
$D = 20^\circ 02' 00.56''$	
$R = 286.00$	
$T = 250.70$	
$L = 411.67$	
$E = 94.32$	
$e_{max} = 0.06$ FT/FT	

LINES SHOWN ON THIS PLAN AS EXISTING PROPERTY LINES (P/L) ARE BELIEVED TO BE ACCURATE BUT SHOULD NOT BE RELIED UPON FOR PURPOSES UNRELATED TO THE STATE OF VERMONT'S ACQUISITION OF LAND AND RIGHTS FOR THIS PROJECT.

FOR EROSION CONTROL DETAIL SEE ROW SHEET 10 OF 17

FOR DRAINAGE DETAILS SEE ROW SHEET 12 OF 17 SHEETS



SHEET NAME: LAYOUT SHEET #1	
PROJECT NAME: READING	HIGHWAY NO.: VT 44
PROJECT NUMBER: BRS 0148(6)S	BRIDGE NO.: 1
	OVER: THE MILL BROOK
FILE NAME: PW/854034/Structures/0034bdr.dgn	PLOT DATE: 24-JAN-2006
PROJECT MANAGER: R. WHITCOMB	DRAWN BY: J. GILMORE
DESIGNED BY: C. CARLSON	IPARM NAME: 0034bdr
R.O.W. SHEET 16 OF 17	SHEET 9 OF 83