



CONSTRUCT DRIVE
 STA 7+749.000 RT GRAVEL
 STA 7+827.000 LT GRAVEL

MANUFACTURED TERMINAL SECTION (TANGENTIAL)
 STA 7+763.682 TO STA 7+778.896 RT

 STEEL BEAM GUARDRAIL
 STA 7+778.896 TO STA 8+040.000 RT

CONSTRUCT SPECIAL DITCH
 STA 7+720.000 TO STA 7+747.000 LT
 STA 7+751.000 TO STA 7+910.000 LT
 STA 7+950.000 TO STA 8+030.000 LT
 STA 7+950.000 TO STA 7+810.020 RT

GRUBBING MATERIAL
 STA 7+720.000 TO STA 7+732.786 RT
 STA 8+810.020 TO STA 8+040.000 RT

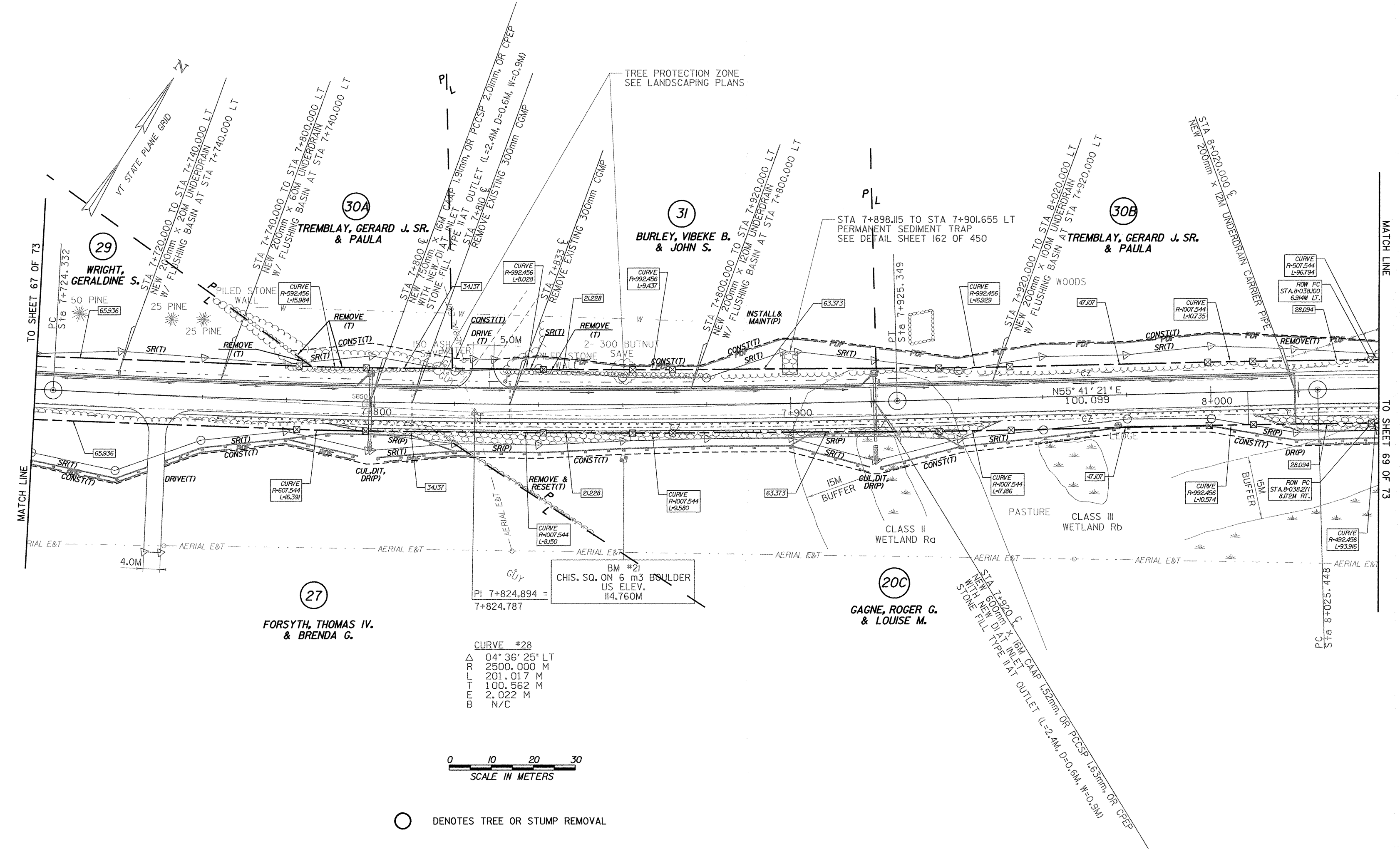
 REMOVING AND RESETTING FENCE
 STA 7+815.817 RT - 6M BACK

EROSION MATTING (JUTE)
 STA 7+720.000 TO STA 7+732.786 RT
 STA 8+810.020 TO STA 8+040.000 RT

 STONE FILL, TYPE II
 STA 7+720.000 TO STA 7+732.786 RT
 STA 8+810.020 TO STA 8+040.000 RT

RELOCATE MAIL BOX, SINGLE SUPPORT
 STA 7+830.370 RT TO STA 7+832.088 LT

 REMOVAL OF EXISTING FENCE
 STA 8+013.200 TO STA 8+033.200 LT



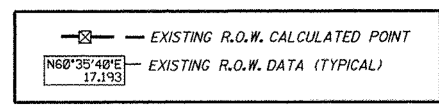
CURVE #28
 Δ 04° 36' 25" LT
 R 2500.000 M
 L 201.017 M
 T 100.562 M
 E 2.022 M
 B N/C



○ DENOTES TREE OR STUMP REMOVAL

- NOTES:
- ALL SIDE ROAD RADII SHALL BE 1M UNLESS OTHERWISE NOTED. REFER TO STD B-12M
 - ALL DRIVE RADII SHALL BE 6M UNLESS OTHERWISE NOTED. REFER TO STD B-7M

LINES SHOWN ON THIS PLAN AS EXISTING PROPERTY LINES P/L ARE BELIEVED TO BE ACCURATE BUT SHOULD NOT BE RELIED UPON FOR PURPOSES UNRELATED TO THE TOWN OF FRANKLIN'S ACQUISITION OF LAND AND RIGHTS FOR THIS PROJECT.



PROJECT NAME: HIGHGATE - FRANKLIN
 PROJECT NUMBER: STP RS 030(I) SA
 FILE NAME: ...85c060/deslgn/dc060bdr.dgn PLOT DATE: 23-FEB-2005
 PROJECT LEADER: DELLASANTA DRAWN BY: SQUAD B
 DESIGNED BY: SQUAD B CHECKED BY: SQUAD B
 R. O. W. SHEET 68 OF 73 SHEETS SHEET 62 OF 450