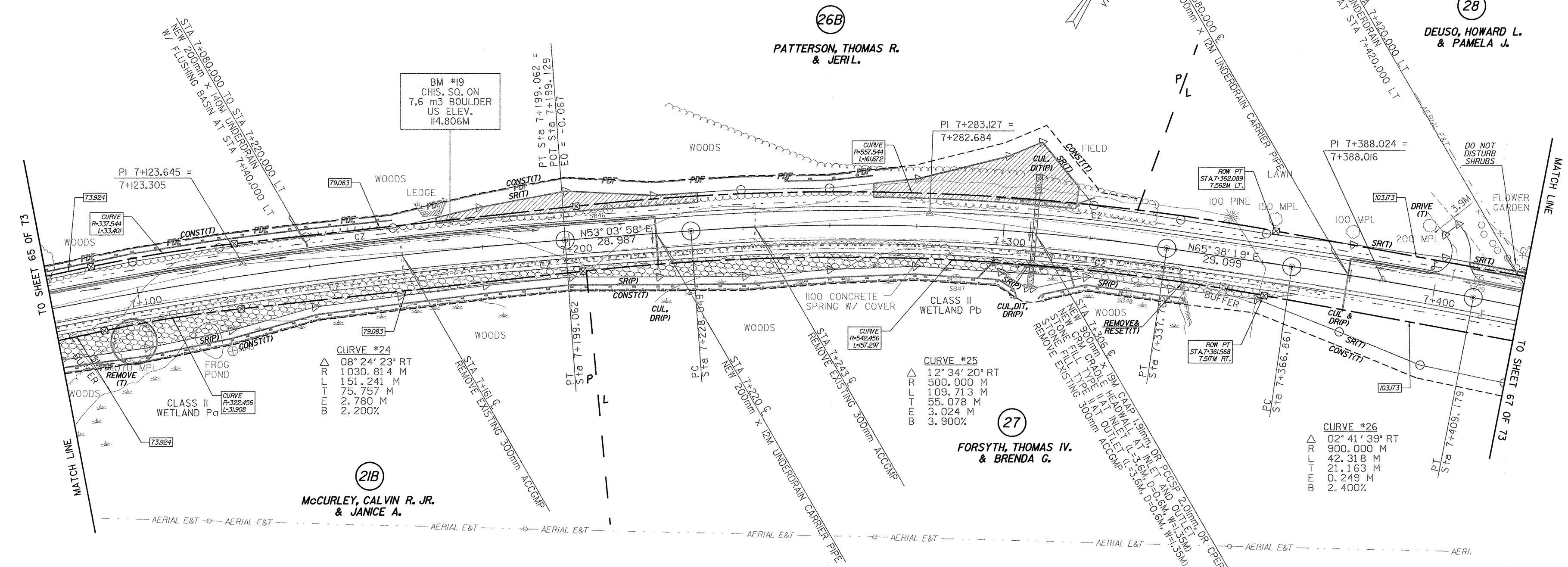


STEEL BEAM GUARDRAIL  
STA 7+080.000 TO STA 7+360.000 RT  
MANUFACTURED TERMINAL SECTION (TANGENTIAL)  
STA 7+360.000 TO STA 7+375.243 RT  
STONE FILL TYPE II  
STA 7+080.000 TO STA 7+375.243 RT

GRUBBING MATERIAL  
STA 7+080.000 TO STA 7+375.243 RT  
EROSION MATTING (JUTE)  
STA 7+080.000 TO STA 7+375.243 RT  
CONSTRUCT DRIVE  
STA 7+405.000 LT PAVED

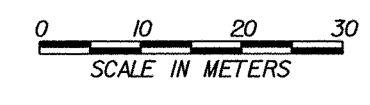
RELOCATE MAIL BOX, SINGLE SUPPORT  
STA 7+411.500 RT TO STA 7+398.780 LT  
REMOVING AND RESETTNG FENCE  
STA 7+341.210 RT - 4.9M BACK  
STONE FILL TYPE I  
STA 6+800.000 TO STA 6+850.000 LT

CONSTRUCT SPECIAL DITCH  
STA 7+170.000 TO STA 7+230.000 LT  
STA 7+270.000 TO STA 7+310.000 LT  
STA 7+370.000 TO STA 7+400.000 LT  
STA 7+410.000 TO STA 7+420.000 LT



TO SHEET 65 OF 73

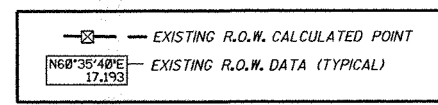
TO SHEET 67 OF 73



○ DENOTES TREE OR STUMP REMOVAL

- NOTES:
1. ALL SIDE ROAD RADII SHALL BE 1M UNLESS OTHERWISE NOTED. REFER TO STD B-12M
  2. ALL DRIVE RADII SHALL BE 6M UNLESS OTHERWISE NOTED. REFER TO STD B-7M

LINES SHOWN ON THIS PLAN AS EXISTING PROPERTY LINES P/L ARE BELIEVED TO BE ACCURATE BUT SHOULD NOT BE RELIED UPON FOR PURPOSES UNRELATED TO THE TOWN OF FRANKLIN'S ACQUISITION OF LAND AND RIGHTS FOR THIS PROJECT.



PROJECT NAME:	HIGHGATE - FRANKLIN
PROJECT NUMBER:	STP RS 030(I) SA
FILE NAME:	...85c060/desigr/dc060bdr.dgn
PROJECT LEADER:	DELLASANTA
DESIGNED BY:	SQUAD B
R. O. W. SHEET 66 OF 73 SHEETS	PLOT DATE: 23-FEB-2005 DRAWN BY: SQUAD B CHECKED BY: SQUAD B SHEET 60 OF 450