

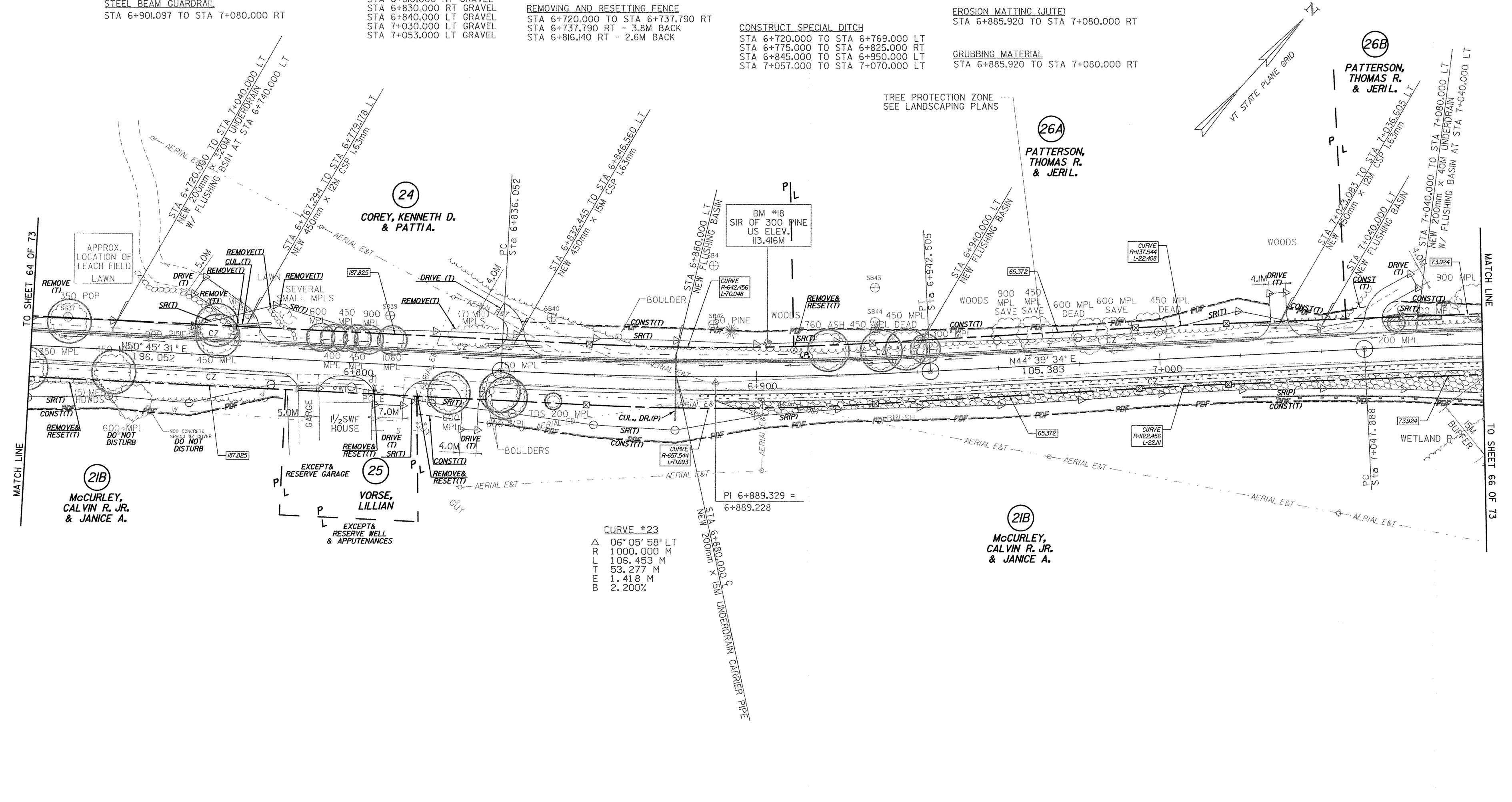
MANUFACTURED TERMINAL SECTION (TANGENTIAL)
 STA 6+885.920 TO STA 6+901.097 RT
 STEEL BEAM GUARDRAIL
 STA 6+901.097 TO STA 7+080.000 RT

CONSTRUCT DRIVE
 STA 6+774.000 LT GRAVEL
 STA 6+790.000 RT GRAVEL
 STA 6+810.000 RT GRAVEL
 STA 6+830.000 RT GRAVEL
 STA 6+840.000 LT GRAVEL
 STA 7+030.000 LT GRAVEL
 STA 7+053.000 LT GRAVEL

RELOCATE MAIL BOX, SINGLE SUPPORT
 STA 6+778.020 RT
 STA 6+804.700 RT
 REMOVING AND RESETTING FENCE
 STA 6+720.000 TO STA 6+737.790 RT
 STA 6+737.790 RT - 3.8M BACK
 STA 6+816.140 RT - 2.6M BACK

CONSTRUCT SPECIAL DITCH
 STA 6+720.000 TO STA 6+769.000 LT
 STA 6+775.000 TO STA 6+825.000 RT
 STA 6+845.000 TO STA 6+950.000 LT
 STA 7+057.000 TO STA 7+070.000 LT

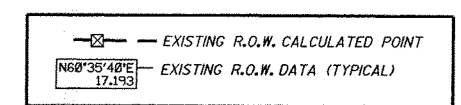
STONE FILL, TYPE II
 STA 6+885.920 TO STA 7+080.000 RT
 EROSION MATTING (JUTE)
 STA 6+885.920 TO STA 7+080.000 RT
 GRUBBING MATERIAL
 STA 6+885.920 TO STA 7+080.000 RT



○ DENOTES TREE OR STUMP REMOVAL

LINES SHOWN ON THIS PLAN AS EXISTING PROPERTY LINES P/L ARE BELIEVED TO BE ACCURATE BUT SHOULD NOT BE RELIED UPON FOR PURPOSES UNRELATED TO THE TOWN OF FRANKLIN'S ACQUISITION OF LAND AND RIGHTS FOR THIS PROJECT.

- NOTES:
- ALL SIDE ROAD RADII SHALL BE 11M UNLESS OTHERWISE NOTED, REFER TO STD B-12M
 - ALL DRIVE RADII SHALL BE 6M UNLESS OTHERWISE NOTED, REFER TO STD B-71M



PROJECT NAME:	HIGHGATE - FRANKLIN
PROJECT NUMBER:	STP RS 030(I)SA
FILE NAME:	...85c060/design/dc060bdr.dgn
PLOT DATE:	23-FEB-2005
PROJECT LEADER:	DELLASANTA
DRAWN BY:	SQUAD B
DESIGNED BY:	SQUAD B
CHECKED BY:	SQUAD B
R. O. W. SHEET 65 OF 73 SHEETS	SHEET 59 OF 450