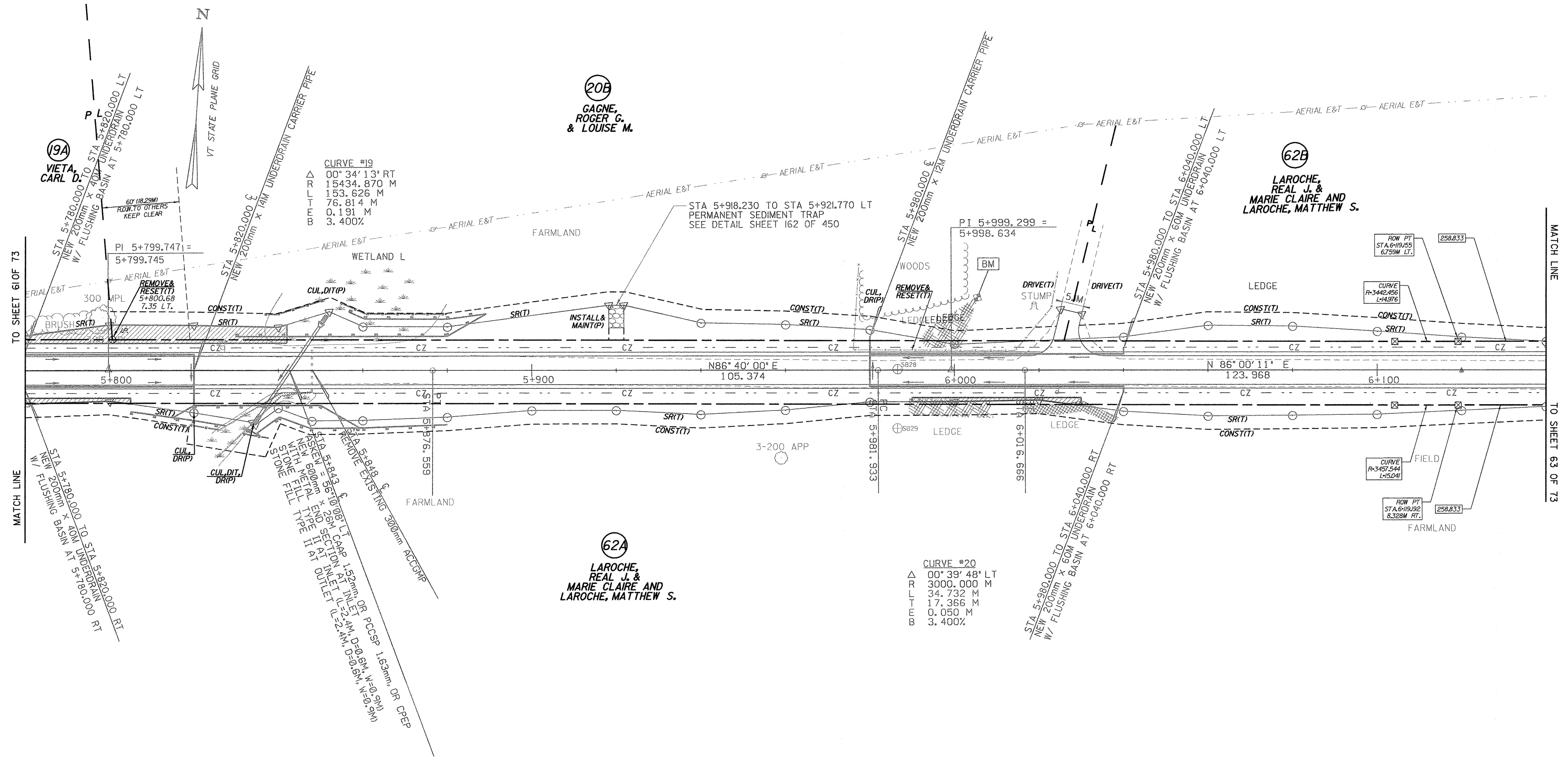


CONSTRUCT DRIVE
STA 6+024.000 LT GRAVEL

REMOVING AND RESETTING FENCE
STA 5+976.000 LT - 5M BACK
STA 5+976.000 TO STA 6+017.000 LT
STA 6+017.000 LT - 3M BACK

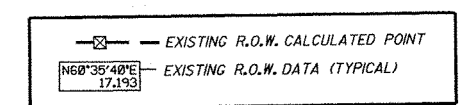
CONSTRUCT SPECIAL DITCH
STA 5+780.000 TO STA 5+840.000 LT
STA 5+780.000 TO STA 5+810.000 RT
STA 5+950.000 TO STA 6+030.000 RT
STA 6+010.000 TO STA 6+020.000 LT



○ DENOTES TREE OR STUMP REMOVAL

LINES SHOWN ON THIS PLAN AS EXISTING PROPERTY LINES P/L ARE BELIEVED TO BE ACCURATE BUT SHOULD NOT BE RELIED UPON FOR PURPOSES UNRELATED TO THE TOWN OF FRANKLIN'S ACQUISITION OF LAND AND RIGHTS FOR THIS PROJECT.

- NOTES:**
- ALL SIDE ROAD RADII SHALL BE 11M UNLESS OTHERWISE NOTED, REFER TO STD B-12M
 - ALL DRIVE RADII SHALL BE 6M UNLESS OTHERWISE NOTED, REFER TO STD B-71M



PROJECT NAME: HIGHGATE - FRANKLIN	
PROJECT NUMBER: STP RS 030(I) SA	
FILE NAME: ...85c060/design/dc060bdr.dgn	PLOT DATE: 23-FEB-2005
PROJECT LEADER: DELLASANTA	DRAWN BY: SQUAD B
DESIGNED BY: SQUAD B	CHECKED BY: SQUAD B
R. O. W. SHEET 62 OF 73 SHEETS	SHEET 56 OF 450