

**CONSTRUCT DRIVE**  
 STA 4+847.000 LT GRAVEL  
 STA 4+847.000 RT GRAVEL  
 STA 4+872.000 LT GRAVEL  
 STA 4+935.000 LT GRAVEL

**STEEL BEAM GUARDRAIL**  
 STA 5+013.312 TO STA 5+047.532 LT  
 STA 5+024.731 TO STA 5+042.267 RT

**MANUFACTURED TERMINAL SECTION (TANGENT)**  
 STA 4+998.071 TO STA 5+013.312 LT  
 STA 5+009.491 TO STA 5+024.731 RT  
 STA 5+047.532 TO STA 5+062.772 LT

**ANCHOR FOR STEEL RAIL**  
 STA 5+042.267 RT

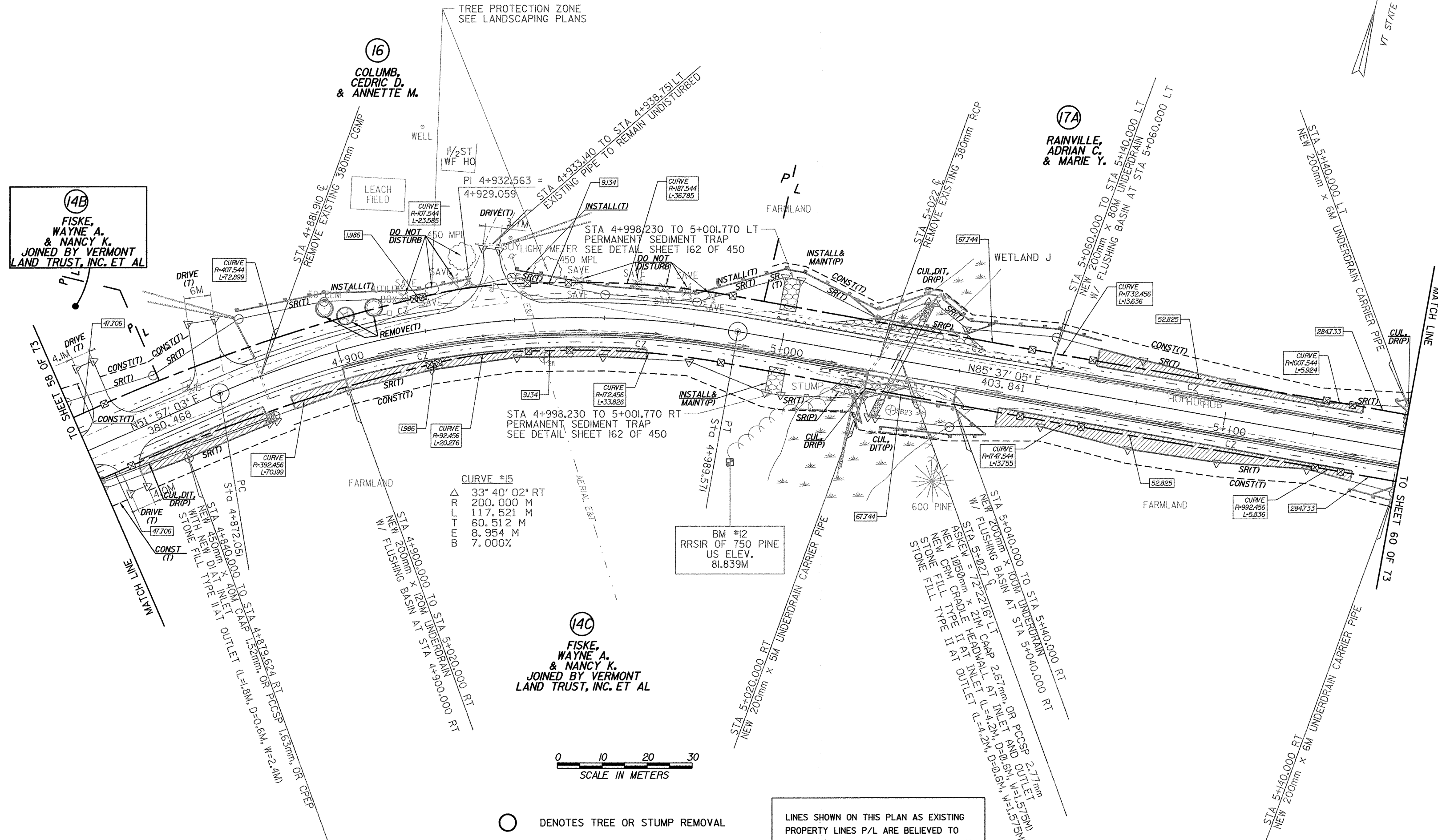
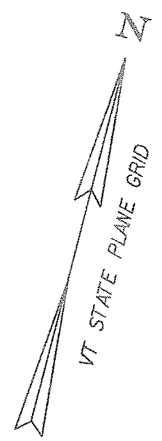
**RELOCATE MAIL BOX, SINGLE SUPPORT**  
 STA 4+935.000 LT

**STONE FILL, TYPE II**  
 STA 4+998.230 TO STA 5+062.740 LT  
 STA 5+009.649 TO STA 5+036.100 RT

**EROSION MATTING (JUTE)**  
 STA 4+998.230 TO STA 5+062.740 LT  
 STA 5+009.649 TO STA 5+036.100 RT

**CONSTRUCT SPECIAL DITCH**  
 STA 4+820.000 TO STA 4+843.250 RT  
 STA 4+890.000 TO STA 4+990.000 RT  
 STA 5+070.000 TO STA 5+130.000 RT  
 STA 5+070.000 TO STA 5+130.000 LT

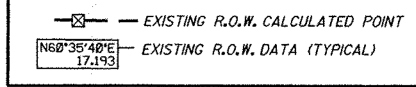
**GRUBBING MATERIAL**  
 STA 4+998.230 TO STA 5+062.740 LT  
 STA 5+009.649 TO STA 5+036.100 RT



○ DENOTES TREE OR STUMP REMOVAL

LINES SHOWN ON THIS PLAN AS EXISTING PROPERTY LINES P/L ARE BELIEVED TO BE ACCURATE BUT SHOULD NOT BE RELIED UPON FOR PURPOSES UNRELATED TO THE TOWN OF FRANKLIN'S ACQUISITION OF LAND AND RIGHTS FOR THIS PROJECT.

- NOTES:**
- ALL SIDE ROAD RADII SHALL BE 11M UNLESS OTHERWISE NOTED. REFER TO STD B-12M
  - ALL DRIVE RADII SHALL BE 6M UNLESS OTHERWISE NOTED. REFER TO STD B-7M



PROJECT NAME:	HIGHGATE - FRANKLIN
PROJECT NUMBER:	STP RS 030(I) SA
FILE NAME:	...85c060/design/dc060bdr.dgn
PLOT DATE:	23-FEB-2005
PROJECT LEADER:	DELLASANTA
DRAWN BY:	SQUAD B
DESIGNED BY:	SQUAD B
CHECKED BY:	SQUAD B
R. O. W. SHEET 59 OF 73 SHEETS	SHEET 53 OF 450