

STEEL BEAM GUARDRAIL
 STA 4+480.000 TO STA 4+498.788 LT
 STA 4+488.749 TO STA 4+496.130 RT

CONSTRUCT DRIVE
 STA 4+637.000 LT GRAVEL
 STA 4+639.000 RT GRAVEL

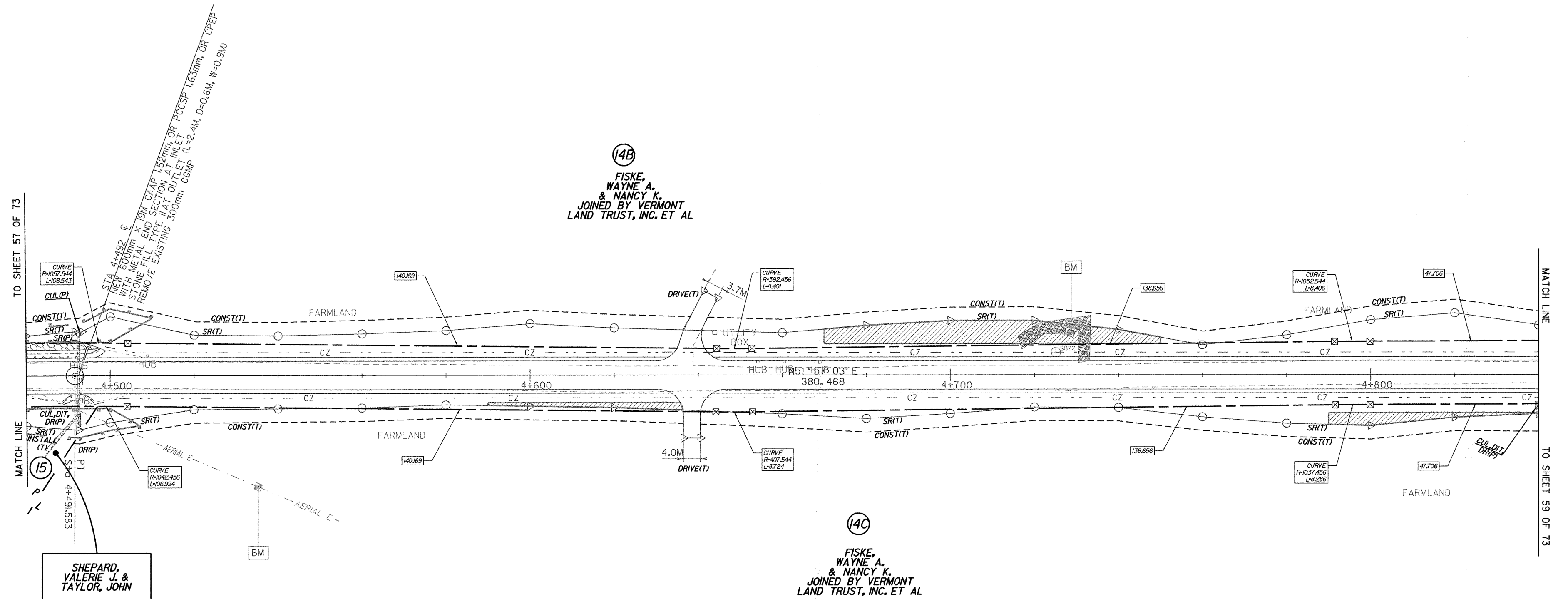
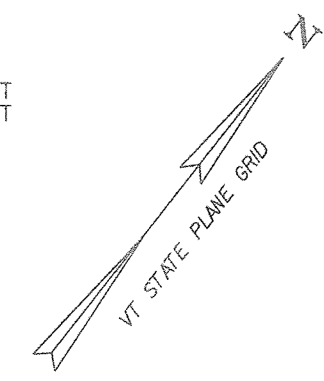
ANCHOR FOR STEEL BEAM RAIL
 STA 4+488.749 RT
 STA 4+496.130 RT
 STA 4+498.788 LT

CONSTRUCT SPECIAL DITCH
 STA 4+491.500 TO STA 4+492.500 RT
 STA 4+670.000 TO STA 4+750.000 LT
 STA 4+790.000 TO STA 4+820.000 RT

STONE FILL, TYPE II
 STA 4+480.000 TO STA 4+495.150 LT

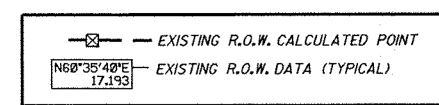
EROSION MATTING (JUTE)
 STA 4+480.000 TO STA 4+495.150 LT

GRUBBING MATERIAL
 STA 4+480.000 TO STA 4+495.150 LT



○ DENOTES TREE OR STUMP REMOVAL

- NOTES:**
1. ALL SIDE ROAD RADII SHALL BE 11M UNLESS OTHERWISE NOTED. REFER TO STD B-12M
 2. ALL DRIVE RADII SHALL BE 6M UNLESS OTHERWISE NOTED. REFER TO STD B-7M



LINES SHOWN ON THIS PLAN AS EXISTING PROPERTY LINES P/L ARE BELIEVED TO BE ACCURATE BUT SHOULD NOT BE RELIED UPON FOR PURPOSES UNRELATED TO THE TOWN OF HIGHGATE'S ACQUISITION OF LAND AND RIGHTS FOR THIS PROJECT.

PROJECT NAME: HIGHGATE - FRANKLIN	
PROJECT NUMBER: STP RS 030(II) SA	
FILE NAME: ...85c060/desIgn/dc060bdr.dgn	PLOT DATE: 23-FEB-2005
PROJECT LEADER: DELLASANTA	DRAWN BY: SQUAD B
DESIGNED BY: SQUAD B	CHECKED BY: SQUAD B
R. O. W. SHEET 58 OF 73 SHEETS	SHEET 52 OF 450