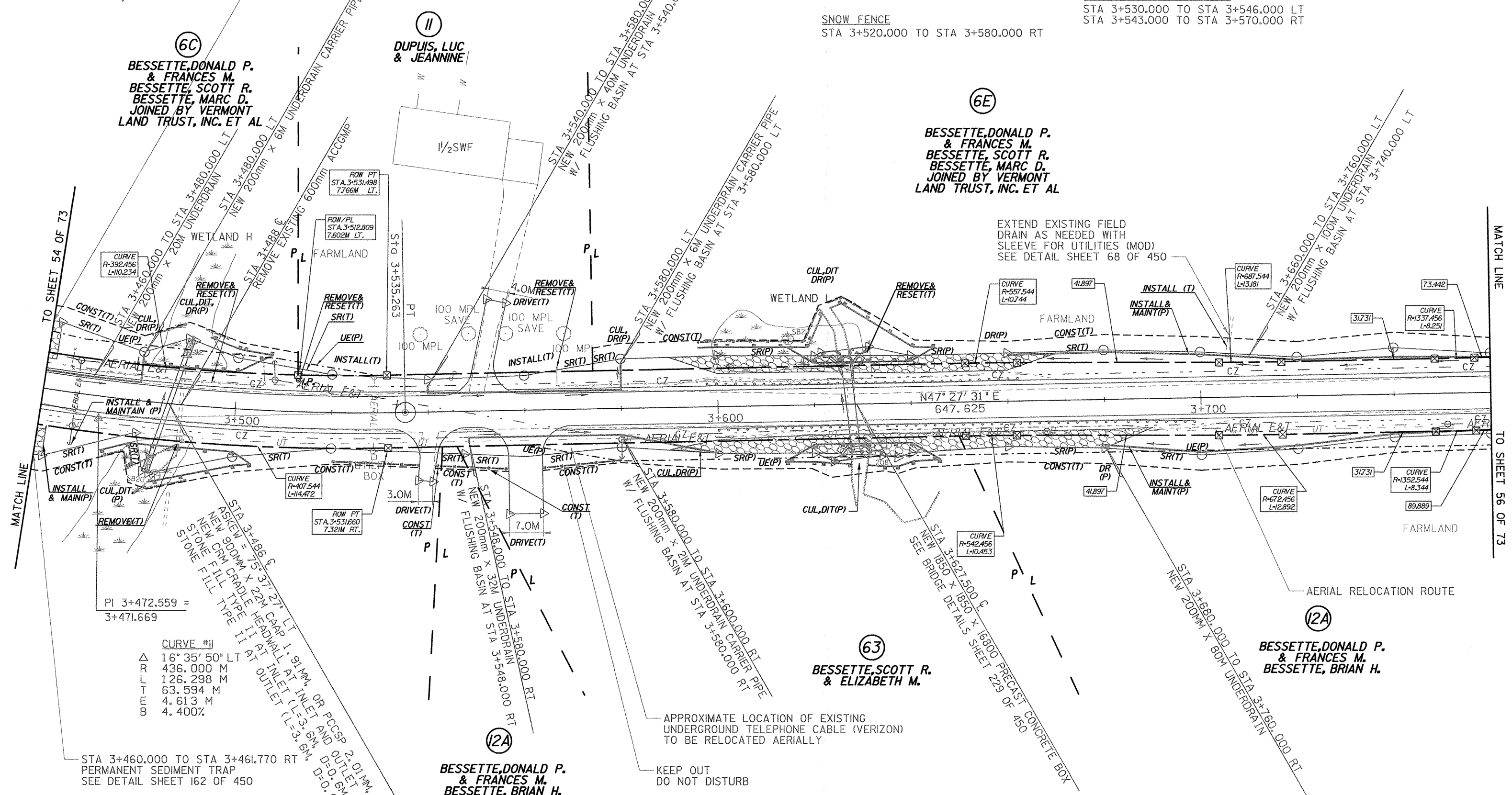


CONSTRUCT
 STA 3+540.000 RT GRAVEL
 STA 3+549.000 LT GRAVEL
 STA 3+560.000 RT GRAVEL
STEEL BEAM GUARDRAIL
 STA 3+612.857 TO STA 3+647.057 LT
 STA 3+615.198 TO STA 3+683.597 RT
PERMANENT SEDIMENT TRAP
 STA 3+460.000 TO STA 3+461.770 RT
 SEE DETAIL SHEET 162 OF 450
MANUFACTURED TERMINAL SECTION (TANGENTIAL)
 STA 3+597.617 TO STA 3+612.857 LT
 STA 3+647.057 TO STA 3+662.297 LT
 STA 3+600.000 TO STA 3+615.198 RT
 STA 3+683.597 TO STA 3+698.838 RT
RELOCATE MAIL BOX, SINGLE SUPPORT
 STA 3+544.880 LT
REMOVING AND RESETTING FENCE
 STA 3+465.150 LT - 4.5M BACK
 STA 3+465.150 TO STA 3+505.630 LT
 STA 3+505.630 LT - 6M BACK
 STA 3+566.880 TO STA 3+631.920 LT
 STA 3+566.880 LT - 4M BACK
 STA 3+631.920 LT - 8M BACK
STONE FILL, TYPE II
 STA 3+597.659 TO STA 3+662.340 LT
 STA 3+600.000 TO STA 3+698.880 RT
EROSION MATTING (W/TE)
 STA 3+597.659 TO STA 3+662.340 LT
 STA 3+600.000 TO STA 3+698.880 RT
GRUBBING MATERIAL
 STA 3+597.659 TO STA 3+662.340 LT
 STA 3+600.000 TO STA 3+698.880 RT
CONSTRUCT SPECIAL DITCH
 STA 3+530.000 TO STA 3+546.000 LT
 STA 3+543.000 TO STA 3+570.000 RT
SNOW FENCE
 STA 3+520.000 TO STA 3+580.000 RT



TO SHEET 54 OF 73
 MATCH LINE
 STA 3+460.000 TO STA 3+461.770 RT
 PERMANENT SEDIMENT TRAP
 SEE DETAIL SHEET 162 OF 450
 STA 3+460.000 TO STA 3+461.770 RT
 PERMANENT SEDIMENT TRAP
 SEE DETAIL SHEET 162 OF 450
 STA 3+460.000 TO STA 3+461.770 RT
 PERMANENT SEDIMENT TRAP
 SEE DETAIL SHEET 162 OF 450

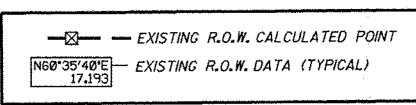
(6C)
 BESSETTE, DONALD P. & FRANCES M.
 BESSETTE, SCOTT R.
 BESSETTE, MARC D.
 JOINED BY VERMONT LAND TRUST, INC. ET AL
(6E)
 BESSETTE, DONALD P. & FRANCES M.
 BESSETTE, SCOTT R.
 BESSETTE, MARC D.
 JOINED BY VERMONT LAND TRUST, INC. ET AL
(63)
 BESSETTE, SCOTT R. & ELIZABETH M.
(12A)
 BESSETTE, DONALD P. & FRANCES M.
 BESSETTE, BRIAN H.

(6D)
 BESSETTE, DONALD P. & FRANCES M.
 BESSETTE, SCOTT R.
 BESSETTE, MARC D.
 JOINED BY VERMONT LAND TRUST, INC. ET AL



○ DENOTES TREE OR STUMP REMOVAL

- NOTES:**
1. ALL SIDE ROAD RADII SHALL BE 11M UNLESS OTHERWISE NOTED. REFER TO STD B-12M
 2. ALL DRIVE RADII SHALL BE 6M UNLESS OTHERWISE NOTED. REFER TO STD B-71M



LINES SHOWN ON THIS PLAN AS EXISTING PROPERTY LINES P/L ARE BELIEVED TO BE ACCURATE BUT SHOULD NOT BE RELIED UPON FOR PURPOSES UNRELATED TO THE TOWN OF HIGHGATE'S ACQUISITION OF LAND AND RIGHTS FOR THIS PROJECT.

PROJECT NAME:	HIGHGATE - FRANKLIN
PROJECT NUMBER:	STP RS 030(I) SA
FILE NAME:	...85c060\design\dc060bdr.dgn
PLOT DATE:	08-MAR-2005
PROJECT LEADER:	DELLASANTA
DRAWN BY:	SQUAD B
DESIGNED BY:	SQUAD B
CHECKED BY:	SQUAD B
R. O. W. SHEET 55 OF 73 SHEETS	SHEET 49 OF 450