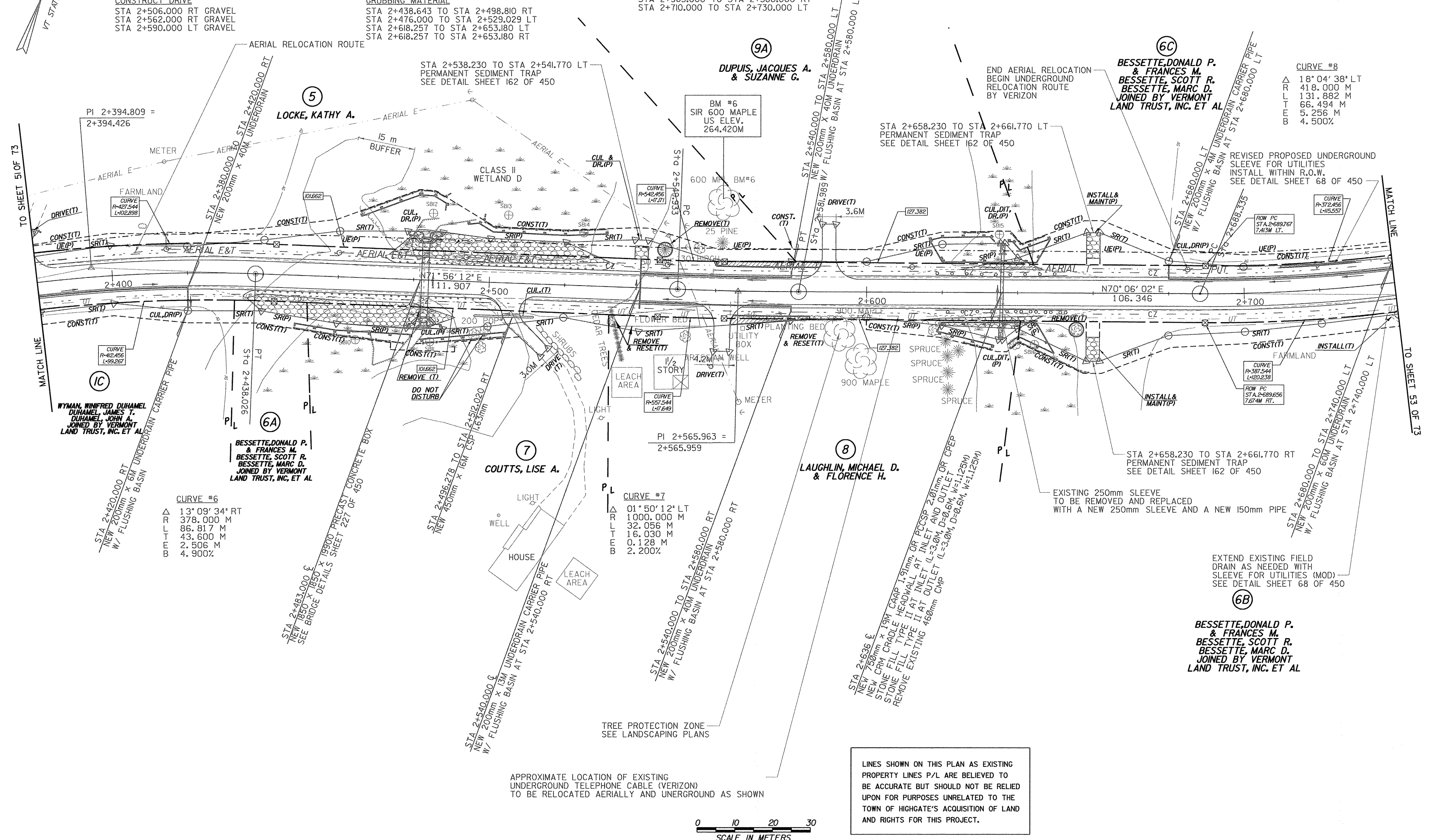
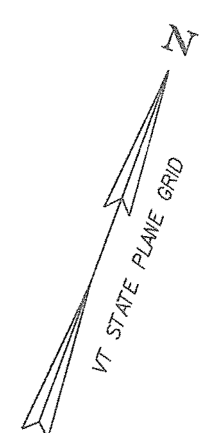


- STEEL BEAM GUARDRAIL**
STA 2+434.922 TO STA 2+503.821 RT
STA 2+472.326 TO STA 2+532.701 LT
STA 2+633.813 TO STA 2+637.623 LT
STA 2+633.813 TO STA 2+637.623 RT
- STONE FILL, TYPE II**
STA 2+438.643 TO STA 2+498.810 RT
STA 2+476.000 TO STA 2+529.029 LT
STA 2+618.257 TO STA 2+653.180 LT
STA 2+618.257 TO STA 2+653.180 RT
- CONSTRUCT DRIVE**
STA 2+506.000 RT GRAVEL
STA 2+562.000 RT GRAVEL
STA 2+590.000 LT GRAVEL
- MANUFACTURED TERMINAL SECTION (TANGENTIAL)**
STA 2+618.247 TO STA 2+633.813 LT
STA 2+637.623 TO STA 2+653.189 LT
STA 2+618.247 TO STA 2+633.813 RT
STA 2+637.623 TO STA 2+653.189 RT
- RELOCATE MAIL BOX, SINGLE SUPPORT**
STA 2+558.830 LT
- GRUBBING MATERIAL**
STA 2+438.643 TO STA 2+498.810 RT
STA 2+476.000 TO STA 2+529.029 LT
STA 2+618.257 TO STA 2+653.180 LT
STA 2+618.257 TO STA 2+653.180 RT
- EROSION MATTING (JUTE)**
STA 2+438.643 TO STA 2+498.810 RT
STA 2+476.000 TO STA 2+529.029 LT
STA 2+618.257 TO STA 2+653.180 LT
STA 2+618.257 TO STA 2+653.180 RT
- CONSTRUCT SPECIAL DITCH**
STA 2+380.000 TO STA 2+410.000 RT
STA 2+536.000 TO STA 2+558.000 RT
STA 2+550.000 TO STA 2+588.500 LT
STA 2+565.000 TO STA 2+580.000 LT
STA 2+710.000 TO STA 2+730.000 LT
- ANCHOR FOR STEEL BEAM RAIL**
STA 2+434.922 RT
STA 2+472.326 LT
STA 2+503.821 RT
STA 2+532.701 LT
- SLEEVES FOR UTILITIES (115 mm DIAMETER)(MOD)**
STA 2+700.000 TO STA 2+740.000 LT



CURVE #8

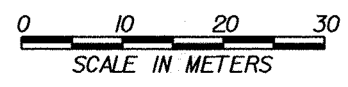
Δ	18° 04' 38" LT
R	418.000 M
L	131.882 M
T	66.494 M
E	5.256 M
B	4.500%

CURVE #6

Δ	13° 09' 34" RT
R	378.000 M
L	86.817 M
T	43.600 M
E	2.506 M
B	4.900%

CURVE #7

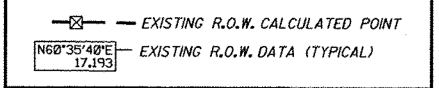
Δ	01° 50' 12" LT
R	1000.000 M
L	32.056 M
T	16.030 M
E	0.128 M
B	2.200%



LINES SHOWN ON THIS PLAN AS EXISTING PROPERTY LINES P/L ARE BELIEVED TO BE ACCURATE BUT SHOULD NOT BE RELIED UPON FOR PURPOSES UNRELATED TO THE TOWN OF HIGHGATE'S ACQUISITION OF LAND AND RIGHTS FOR THIS PROJECT.

○ DENOTES TREE OR STUMP REMOVAL

- NOTES:**
- ALL SIDE ROAD RADII SHALL BE 11M UNLESS OTHERWISE NOTED. REFER TO STD B-12M
 - ALL DRIVE RADII SHALL BE 6M UNLESS OTHERWISE NOTED. REFER TO STD B-71M



PROJECT NAME:	HIGHGATE - FRANKLIN	PLOT DATE:	13-MAY-2005
PROJECT NUMBER:	STP RS 030(I) SA	DRAWN BY:	SQUAD B
FILE NAME:	...85c060/desigr/dc060bdr.dgn	CHECKED BY:	SQUAD B
DESIGNED BY:	SQUAD B	ROW SHEET 52 OF 73 SHEETS	SHEET 46 OF 450