

STEEL BEAM GUARDRAIL
 STA I+660.000 TO STA I+676.911 LT
 STA I+738.052 TO STA I+823.478 LT
 STA I+849.622 TO STA I+915.719 LT

RELOCATE MAIL BOX, SINGLE SUPPORT
 STA I+966.260 LT

CONSTRUCT DRIVE
 STA I+724.000 RT GRAVEL
 STA I+834.000 RT GRAVEL
 STA I+834.000 LT GRAVEL
 STA I+920.000 LT GRAVEL
 STA I+973.000 LT GRAVEL
 STA I+973.000 RT GRAVEL

ANCHOR FOR STEEL BEAM RAIL
 STA I+676.911 LT
 STA I+738.052 LT
 STA I+823.478 LT
 STA I+849.622 LT
 STA I+915.719 LT

CONSTRUCT SPECIAL DITCH
 STA I+660.000 TO STA I+721.250 RT
 STA I+790.000 TO STA I+831.500 RT
 STA I+836.500 TO STA I+850.000 RT
 STA I+890.000 TO STA I+915.500 LT
 STA I+890.000 TO STA I+971.500 RT
 STA I+926.500 TO STA I+971.500 LT
 STA I+975.500 TO STA I+990.000 RT
 STA I+976.250 TO STA I+1010.000 LT

STONE FILL, TYPE II
 STA I+739.236 TO STA I+800.000 LT
 STA I+851.127 TO STA I+890.000 LT

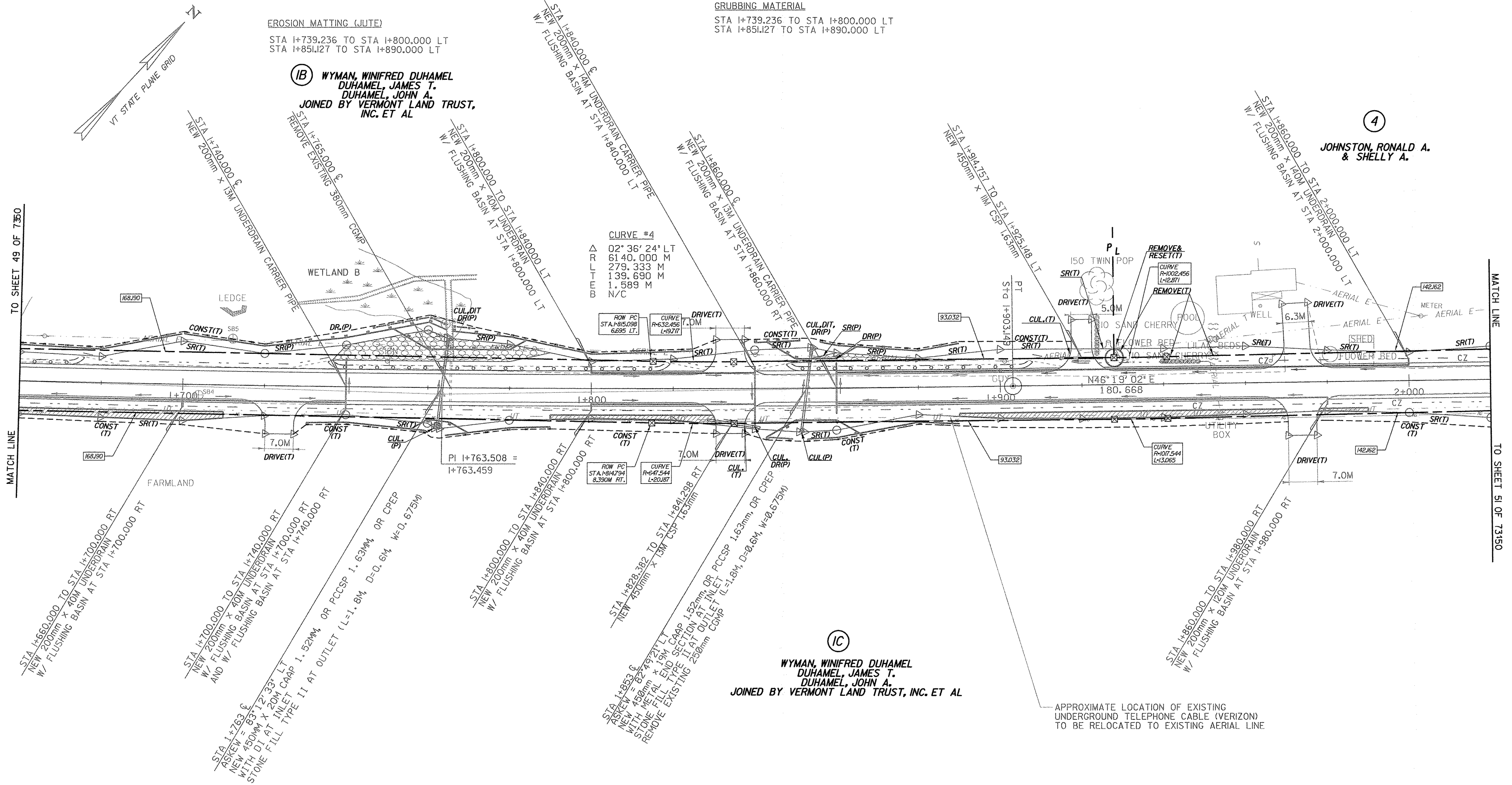
REMOVING AND RESETTING FENCE
 STA I+928.000 TO STA I+932.000 LT

GRUBBING MATERIAL
 STA I+739.236 TO STA I+800.000 LT
 STA I+851.127 TO STA I+890.000 LT

EROSION MATTING (JUTE)
 STA I+739.236 TO STA I+800.000 LT
 STA I+851.127 TO STA I+890.000 LT

(B) WYMAN, WINIFRED DUHAMEL
 DUHAMEL, JAMES T.
 DUHAMEL, JOHN A.
 JOINED BY VERMONT LAND TRUST,
 INC. ET AL

(4) JOHNSTON, RONALD A.
 & SHELLY A.



CURVE #4
 02° 36' 24" LT
 6140.000 M
 279.333 M
 139.690 M
 1.589 M
 N/C

CURVE #5
 02° 36' 24" LT
 6140.000 M
 279.333 M
 139.690 M
 1.589 M
 N/C

(C) WYMAN, WINIFRED DUHAMEL
 DUHAMEL, JAMES T.
 DUHAMEL, JOHN A.
 JOINED BY VERMONT LAND TRUST, INC. ET AL

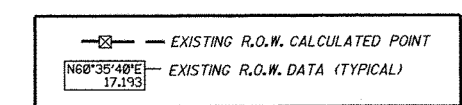
APPROXIMATE LOCATION OF EXISTING UNDERGROUND TELEPHONE CABLE (VERIZON) TO BE RELOCATED TO EXISTING AERIAL LINE



○ DENOTES TREE OR STUMP REMOVAL

- NOTES:
- ALL SIDE ROAD RADII SHALL BE IIM UNLESS OTHERWISE NOTED. REFER TO STD B-12M
 - ALL DRIVE RADII SHALL BE 6M UNLESS OTHERWISE NOTED. REFER TO STD B-7M

LINES SHOWN ON THIS PLAN AS EXISTING PROPERTY LINES P/L ARE BELIEVED TO BE ACCURATE BUT SHOULD NOT BE RELIED UPON FOR PURPOSES UNRELATED TO THE TOWN OF HIGHGATE'S ACQUISITION OF LAND AND RIGHTS FOR THIS PROJECT.



PROJECT NAME:	HIGHGATE - FRANKLIN
PROJECT NUMBER:	STP RS 030(I) SA
FILE NAME:	...85c060/desIgn/dc060bdr.dgn
PROJECT LEADER:	DELLASANTA
DESIGNED BY:	SQUAD B
R. O. W. SHEET 50 OF 73 SHEETS	SHEET 44 OF 450