

**VERTICAL GRANITE CURB**  
 15+120.0 TO 15+125.2 LT  
 15+120.0 TO 15+158.7 RT  
 15+128.6 TO 15+133.9 RT  
 15+138.0 TO 15+175.7 LT  
 15+161.8 TO 15+164.9 RT  
 15+168.8 TO 15+191.8 RT  
 15+178.4 TO 15+197.7 LT  
 15+195.2 TO 15+216.0 RT  
 SL 26+006.1 TO SL 26+037.3 LT  
 SL 26+036.9 TO SL 26+047.4 RT  
 SL 26+024.4 RT TO ML 15+212.4 LT  
 15+214.4 TO 15+266.1 LT  
 15+219.7 TO 15+260.8 RT  
 15+265.5 TO 15+300.0 RT  
 15+270.4 TO 15+300.0 LT

**RELOCATE MAIL BOX, SINGLE SUPPORT**  
 15+132 LT TO 15+131.1  
 15+196 RT TO 15+194.7  
 SL 26+038 RT  
 SL 26+045 RT

**REMOVING AND RESETTING FENCE**  
 15+194 TO 15+197 LT  
**TRANSPLANTING SHRUBS**  
 15+158.6 LT - LILAC BUSH  
 (FINAL LOCATION WILL BE AT A MUTUALLY AGREED UPON LOCATION BETWEEN THE ENGINEER AND PROPERTY OWNER)  
 STA ah 15+025 LT AND STA ah 15+029 LT  
 CONSTRUCT TYPICAL DRIVE WITH 1530 SIDEWALK ADJACENT TO VERTICAL GRANITE CURB IN ACCORDANCE WITH STANDARD C-2AM  
 STA ah 15+175 LT AND STA ah 15+179 LT  
 CONSTRUCT TYPICAL DRIVE WITH 1530 SIDEWALK ADJACENT TO VERTICAL GRANITE CURB IN ACCORDANCE WITH STANDARD C-2AM  
 STA ah 15+196 LT  
 CONSTRUCT SIDEWALK RAMP TYPE I

**BULLIS, CLIFFORD J. & HILL, STARLENE A.**  
 (44)

TH#16 STA: 26+060.000  
 END CONSTRUCTION CONSTRUCT SATISFACTORY APPROACH

**PORTLAND CEMENT CONCRETE WALK**  
 15+227 RT (6.0M BACK)  
 15+227 LT (2.0M BACK)  
 15+154 LT 3M BACK  
**PORTLAND CEMENT CONCRETE SIDEWALK, 1530MM**  
 15+212 TO 15+300 LT

**CONSTRUCT DRIVE**  
 15+127 LT GRAVEL  
 15+136 LT GRAVEL  
 15+160.3 RT PAVED  
 15+168 RT PAVED  
 15+171 LT GRAVEL  
 15+194 RT GRAVEL  
 15+218 RT PAVED  
 15+264 RT PAVED  
 15+268 LT GRAVEL  
 TH #16 STA 26+031 RT GRAVEL  
 TH #16 STA 26+043 LT GRAVEL  
 TH #16 STA 26+050 RT GRAVEL

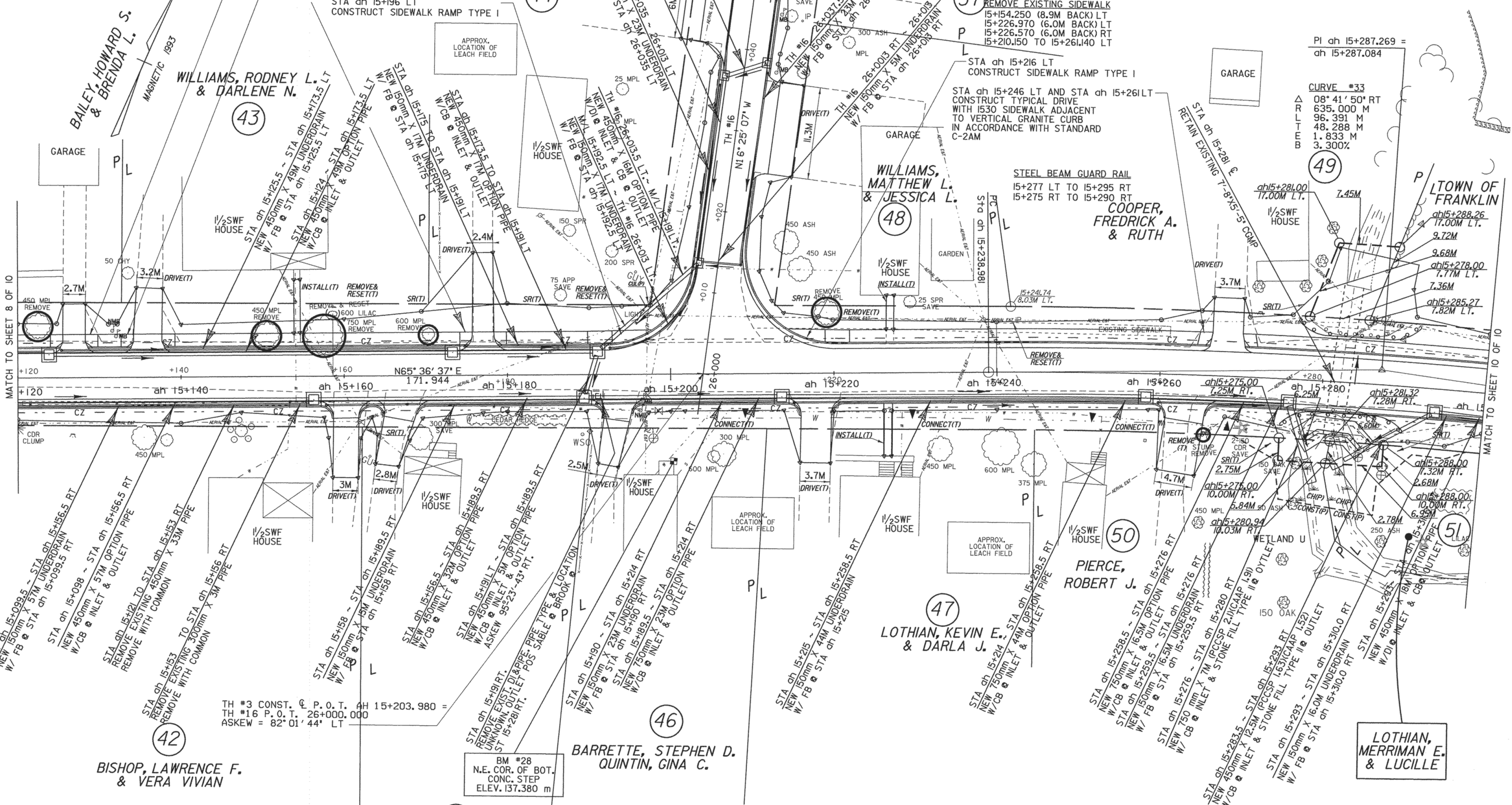
**STONE FILL TYPE II**  
 15+278 TO 15+280 RT  
 15+281.5 TO 15+283.5 RT

CELLAR DRAIN SHALL BE ADJUSTED AS DIRECTED BY THE RESIDENT ENGINEER TO DRAIN INTO NEW UNDERDRAIN  
 15+204 RT  
 15+231 RT  
 15+255 RT

**REMOVE & RESET PROPERTY MARKER**  
 15+242.0 LT  
**REMOVE EXISTING SIDEWALK**  
 15+154.250 (8.9M BACK) LT  
 15+226.970 (6.0M BACK) LT  
 15+226.570 (6.0M BACK) RT  
 15+210.150 TO 15+261.40 LT

PI ch 15+287.269 =  
 ah 15+287.084

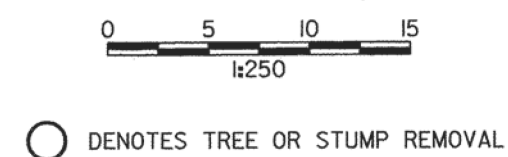
**CURVE #33**  
 08° 41' 50" RT  
 635.000 M  
 96.391 M  
 48.288 M  
 1.833 M  
 3.300%



MATCH TO SHEET 8 OF 10

MATCH TO SHEET 10 OF 10

LINES SHOWN ON THIS PLAN AS EXISTING PROPERTY LINES (P/L) ARE BELIEVED TO BE ACCURATE BUT SHOULD NOT BE RELIED UPON FOR PURPOSES UNRELATED TO THE TOWN OF FRANKLIN'S ACQUISITION OF LAND AND RIGHTS FOR THIS PROJECT.



ALL DRIVE RADII SHALL BE 6M UNLESS OTHERWISE NOTED PER STD B-71M

**FOR R.O.W. USE ONLY**

PROJECT NAME: HIGHGATE - FRANKLIN VILLAGE PORTION  
 PROJECT NUMBER: STP RS 0301(I) SA  
 FILE NAME: ...85c060/desgn/dc060bdr.dgn PLOT DATE: 28-APR-2003  
 PROJECT LEADER: DELLASANTA DRAWN BY: SQUAD B  
 DESIGNED BY: SQUAD B CHECKED BY: SQUAD B  
 R.O.W. SHEET 9 OF 10 SHEET 15 OF 60