

DATUM
 VERTICAL U.S.G.S.
 HORIZONTAL VT. COORD. SYS.

STL. BEAM GUARD RAIL
 STA. 21+00 ~ 22+50 RT.
 STA. 25+75 ~ 30+50 RT.

CONSTRUCT DRIVE
 RT.
 STA. 30+90 (14' WIDE)
 STA. 32+70 (14' WIDE)
 STA. 25+00 (16' WIDE)

BREAKAWAY CABLE TERMINAL
 STA. 22+50 ~ 22+75 RT.
 STA. 25+50 ~ 25+75 RT.
 STA. 30+50 ~ 30+75 RT.

REMOVAL & DISPOSAL OF GUIDE POSTS
 STA. 21+00 ~ 24+70 RT.
 STA. 27+40 ~ 28+80 LT.

SLOPE STABILIZATION
 TYPE II STONE
 STA. 22+50 ~ 25+00 LT.

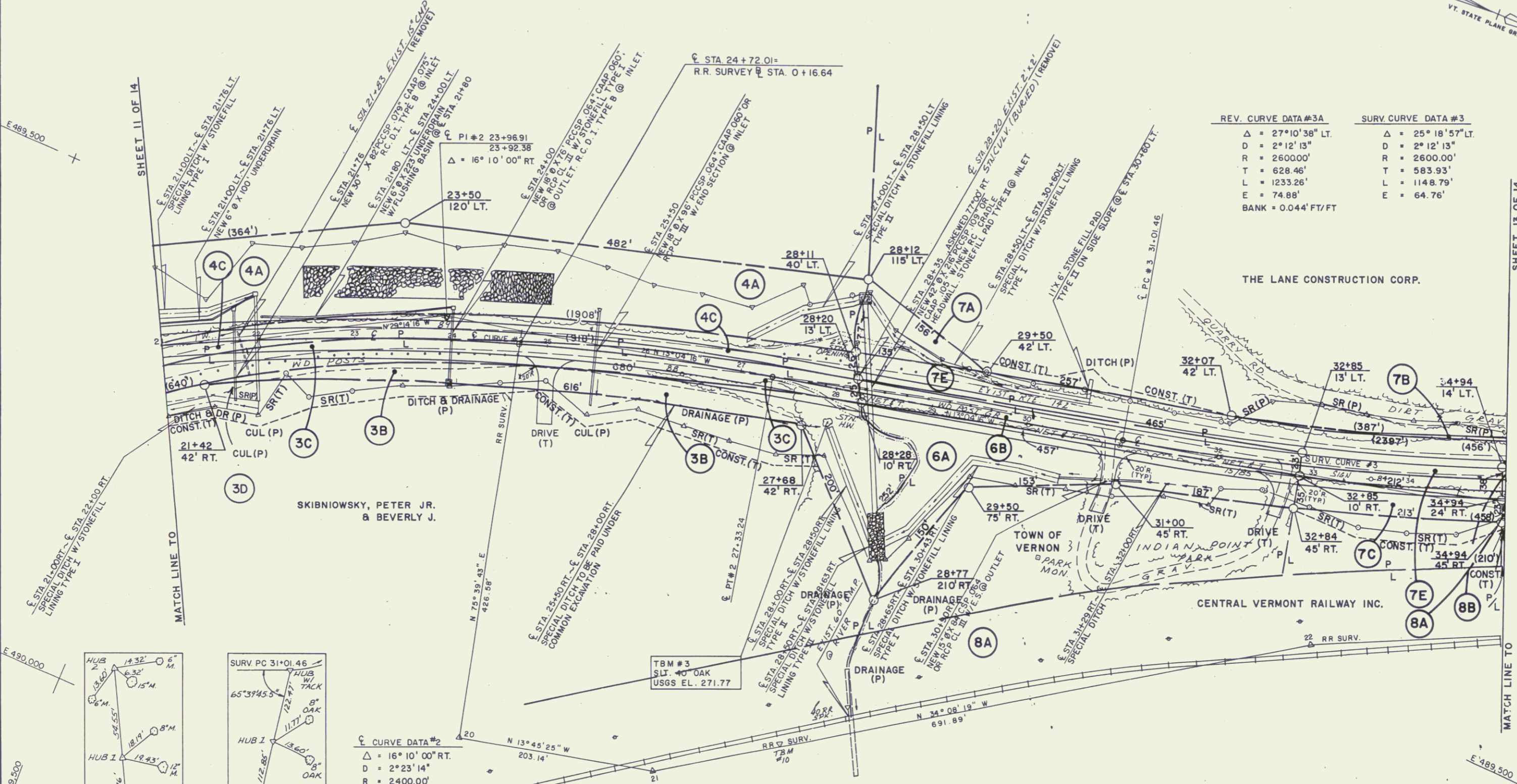
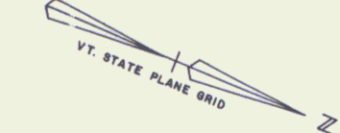
PUB. NO.	STATE	FED. AID PROJ. NO.	FISCAL YEAR	SHEET NO.	TOTAL SHEETS
I	VT.	HES-0109(2)	19		

SKIB, DONALD - ESTATE
 ALLEN, ELEANOR A. - ADMINISTRATRIX

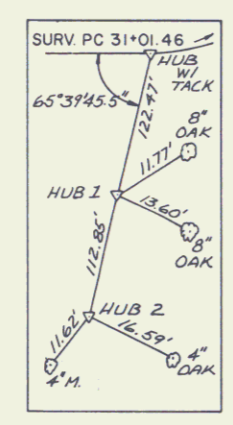
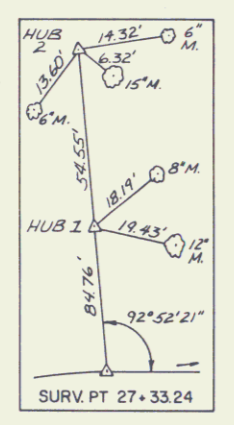
SCARIFYING EXIST. PAV'T.
 STA. 26+25 ~ 31+25

EROSION MATTING
 LT.
 STA. 22+00 ~ 27+00
 STA. 30+60 ~ 35+00

REMOVAL & DISPOSAL OF GUARD RAIL
 STA. 27+70 ~ 29+80 LT.

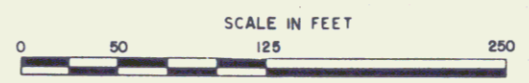


REV. CURVE DATA #3A	SURV. CURVE DATA #3
$\Delta = 27^{\circ}10'38''$ LT.	$\Delta = 25^{\circ}18'57''$ LT.
$D = 2^{\circ}12'13''$	$D = 2^{\circ}12'13''$
$R = 2600.00'$	$R = 2600.00'$
$T = 628.46'$	$T = 583.93'$
$L = 1233.26'$	$L = 1148.79'$
$E = 74.88'$	$E = 64.76'$
BANK = 0.044' FT/FT	



CURVE DATA #2
 $\Delta = 16^{\circ}10'00''$ RT.
 $D = 2^{\circ}23'14''$
 $R = 2400.00'$
 $T = 340.86'$
 $L = 677.19'$
 $E = 24.08'$
 BANK = 0.046 FT/FT

TBM #3
 S.L. OAK
 USGS EL. 271.77



BRYANT/
 SURVEYED BY C.T. MALE DATE 7/89
 DRAWN BY BRYANT ASSOC. DATE
 TRACED BY DATE
**VERNON
 HES 0109(2)**
 R.O.W. SHEET 12 OF 14 SHEETS

JUN 15 1995

8