

STATE OF VERMONT
AGENCY OF TRANSPORTATION

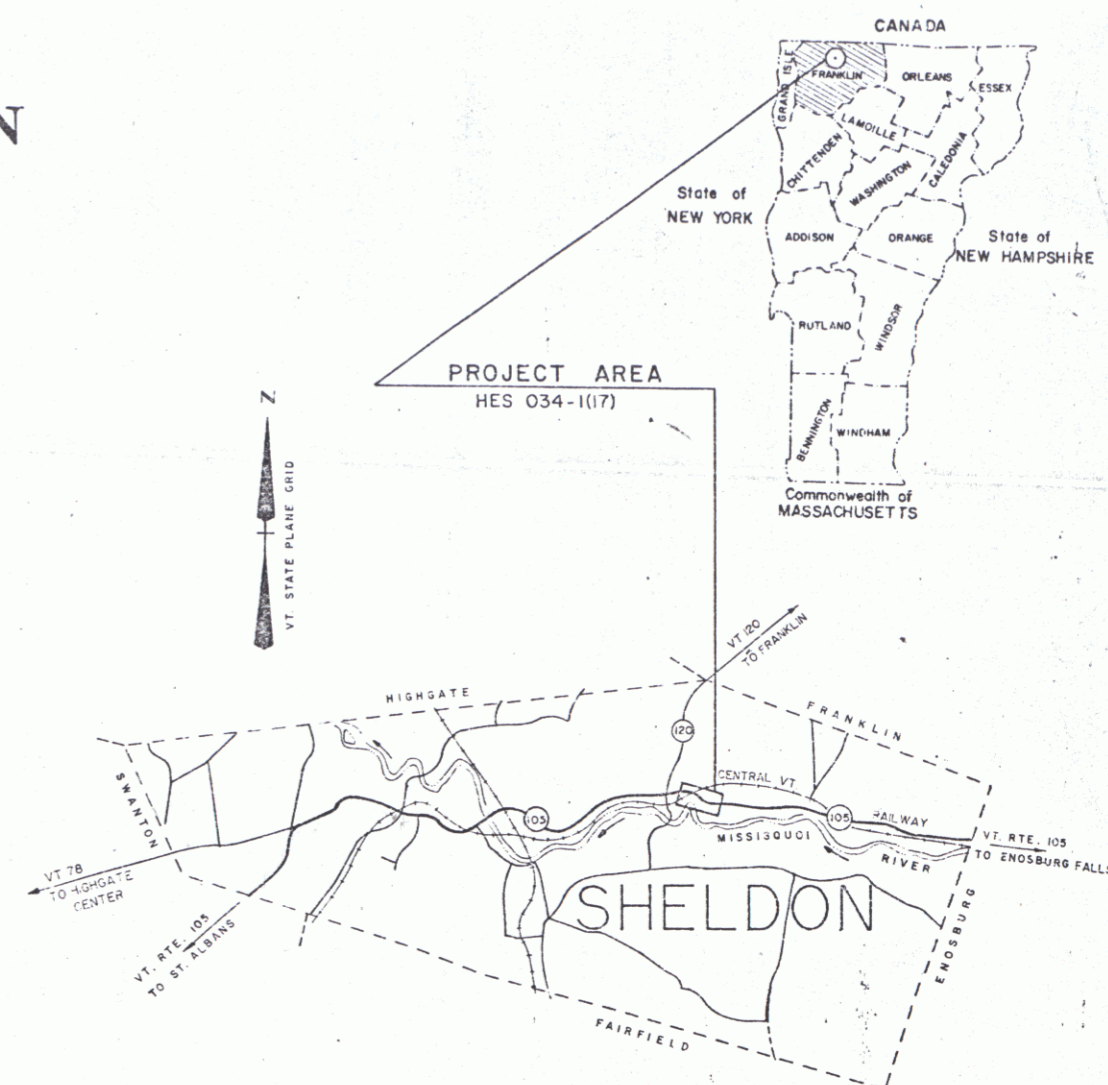


PROPOSED IMPROVEMENT
TOWN OF SHELDON
COUNTY OF FRANKLIN
VERMONT ROUTE 105 (FAP)

BEGINNING AT A POINT ON VERMONT ROUTE 105 APPROXIMATELY 6.964 MILES
EASTERLY OF THE SWANTON - SHELDON TOWN LINE AND EXTENDING
EASTERLY 0.483 MILES.

LENGTH OF ROADWAY 2,516 FEET = 0.477 MILES
LENGTH OF RAILROAD CROSSING 3400 FEET = 0.006 MILES
LENGTH OF PROJECT 2,550 FEET = 0.483 MILES
LENGTH OF R.O.W. PROJECT 2,735 FEET = 0.517 MILES
WORK TO BE PERFORMED UNDER THIS PROJECT INCLUDES GRADING, DRAINAGE,
SUBBASE, AND PAVEMENT FOR A VERMONT STATE HIGHWAY RELOCATION.

R.O.W. PLANS

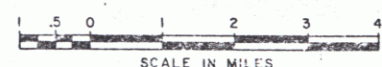


CONVENTIONAL SIGNS

COUNTY LINE	---
TOWN LINE	- - - -
LIMITS OF ACCESS	○
POINT OF ACCESS	X
FENCE LINE	— · — · —
STONE WALL	— · — · — · —
TRAVELED WAY	— · — · — · — · —
GUARD RAIL	— · — · — · — · — · —
RAILROAD	— · — · — · — · — · — · —
SURVEY LINE	— · — · — · — · — · — · — · —
CULVERT	— · — · — · — · — · — · — · — · —
POWER POLE	○
TELEPHONE POLE	○
TREES	○
CONTROL OF ACCESS	///
PROPERTY LINE	— · — · — · — · — · — · — · —
ROW TAKING LINE	— · — · — · — · — · — · — · —
SLOPE RIGHTS	SR
TOP OF CUT	△
TOE OF SLOPE	○
EXISTING DITCH	— · — · — · — · — · — · — · —
NEW DITCH	— · — · — · — · — · — · — · —

DATUM

VERTICAL	NGVD 1929
HORIZONTAL	N/A



DuBois & King
engineering planning management development

THESE PLANS ARE SUBJECT TO SUCH ENGINEERING CHANGES AS MAY BE REQUIRED BY THE FEDERAL HIGHWAY ADMINISTRATION OR THE CHIEF ENGINEER. CONSTRUCTION IS TO BE CARRIED ON IN ACCORDANCE WITH THESE PLANS AND THE STANDARD SPECIFICATIONS FOR CONSTRUCTION DATED 1986, AS APPROVED BY THE FEDERAL HIGHWAY ADMINISTRATION ON NOVEMBER 21, 1985 FOR USE ON THIS PROJECT, INCLUDING ALL SUBSEQUENT REVISIONS AND SUCH REVISED SPECIFICATIONS AND SPECIAL PROVISIONS AS ARE INCORPORATED IN THESE PLANS.

Submitted by ORDER OF THE STATE TRANSPORTATION BOARD

APPROVED: *David B. Kelly* DATE: 11/30/89
CHIEF ENGINEER

APPROVED: *[Signature]* DATE: *[Blank]*
CHIEF, PROPERTY ADMINISTRATION

SHELDON
HES 034-1 (17)
SHEET 1 OF 6 SHEETS

0'-0" SRS 02/17/70

MAY 5 1992

INDEX OF SHEETS	
1	TITLE SHEET
2	TYPICAL SHEET
3-5	QUANTITY SHEETS
6	BLANK
7	ITEM DETAIL AND DRAINAGE SHEET
8-9	GRADE AND EARTHWORK SHEET
10-13	R.O.W. DETAIL SHEETS
14-15	PLAN AND PROFILE SHEETS
16-17	BLANK
18-21	TRAFFIC SIGN AND PAVEMENT MARKING SHEETS
22	GUARD RAIL AND OTHER DETAILS
23	RAILBOX SINGLE SUPPORT
24-27	RR DETAILS
28-31	BR 100
32	BLANK
33-40	CROSS SECTION SHEETS+ML
41-45	CROSS SECTION SHEETS+RR
46	BLANK
47	CULVERT SECTIONS

STANDARDS	
A-60	SLOPES IN SOLID ROCK EXCAV. (50MPH & OVER)
B-5	SLOPE GRADING, EMBANKMENTS, RUCK
B-17	GUARD RAIL - BRIDGES, REST AREA, TURNOUTS
B-71A	RESIDENTIAL DRIVES
C-1	CURBS, BITUMINOUS CONCRETE SIDEWALKS
D-2	C.C.M. HEADWALLS, UNDERDRAIN
D-3	TREATED GUTTERS
D-4	FLUSHING BASINS, END SECTION, ELBOWS
D-14	PRECAST CURB DET. GRATE - RCP END SECTION, ETC.
E-100	CONSTRUCTION APPROACH SIGNS
E-101	CONSTRUCTION SIGN DETAILS
E-102	CONSTRUCTION SIGN DETAILS
E-106	TRAFFIC CONTROL - MISCELLANEOUS DETAILS
E-107	DELINEATION, BARRICADES AND DETOURS FOR CONSTRUCTION AREAS
E-107A	BREAKAWAY BARRICADE DETAILS
E-110	MAJOR MAINTENANCE OPERATION LANE CLOSURE
E-121	STANDARD SIGN PLACEMENT - CONVENTIONAL ROAD
E-123	GUIDE SIGN PLACEMENT - MISCELLANEOUS DETAILS
E-132	GENERAL MOTORIST SERVICES SIGN DETAILS
E-151	WARNING SIGN DETAILS
E-152	WARNING SIGN DETAILS
E-140	FLANGED CHANNEL STEEL SIGN POST DETAIL
E-142	TUBULAR ALUMINUM SIGN POST
E-190	RAILROAD CROSSING SIGNS AND PAVEMENT MARKINGS
G-1	STEEL BEAM GUARDRAIL (50MPH & OVER)
G-14	BREAKAWAY CABLE TERMINAL WOOD POSTS
J-1	PROJECT AND BOUNDARY MARKERS
T-1	TEMPORARY EROSION CONTROL DETAILS
T-2	TEMPORARY EROSION CONTROL DETAILS

STATE OF VERMONT
AGENCY OF TRANSPORTATION

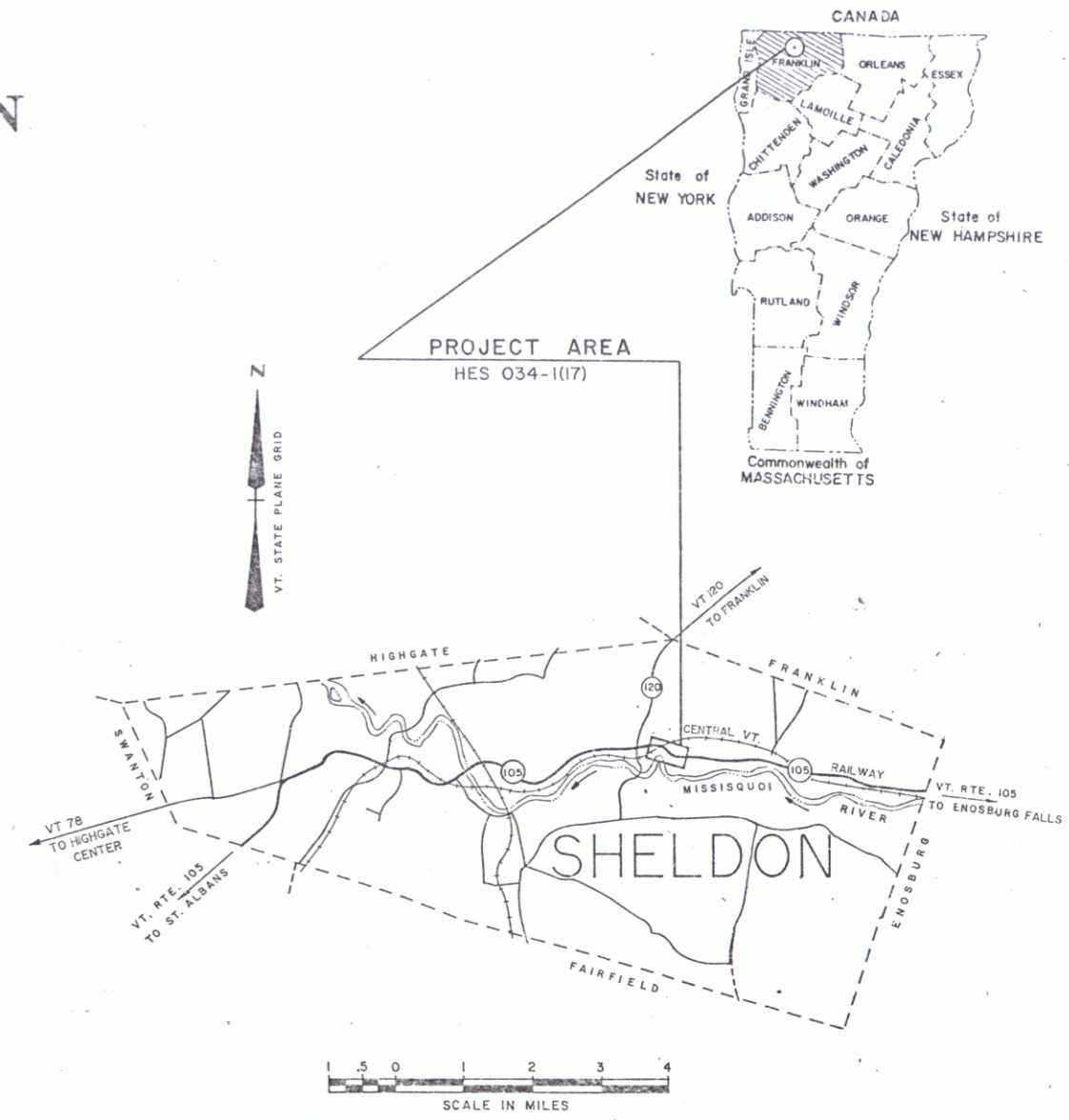


PROPOSED IMPROVEMENT
TOWN OF SHELDON
COUNTY OF FRANKLIN
VERMONT ROUTE 105 (FAP)

BEGINNING AT A POINT ON VERMONT ROUTE 105 APPROXIMATELY 6.964 MILES
EASTERLY OF THE SWANTON - SHELDON TOWN LINE AND EXTENDING
EASTERLY 0.483 MILES.

LENGTH OF ROADWAY 2,516 FEET = 0.477 MILES
LENGTH OF RAILROAD CROSSING 3400 FEET = 0.006 MILES
LENGTH OF PROJECT 2,550 FEET = 0.483 MILES

WORK TO BE PERFORMED UNDER THIS PROJECT INCLUDES GRADING, DRAINAGE,
SUBBASE, AND PAVEMENT FOR A VERMONT STATE HIGHWAY RELOCATION AND
INSTALLATION OF A NEW PREFABRICATED RAIL-HIGHWAY CROSSING (ELASTOMERIC)
AND APPROACHES.



RECORD PLANS

CONTRACTOR **J. A. McDonald, Inc.**
Lyndon, VT.

RESIDENT ENGINEER **R. Hayes**

CONSTRUCTION BEGAN 10/29/90
CONSTRUCTION COMPLETED 12/17/91

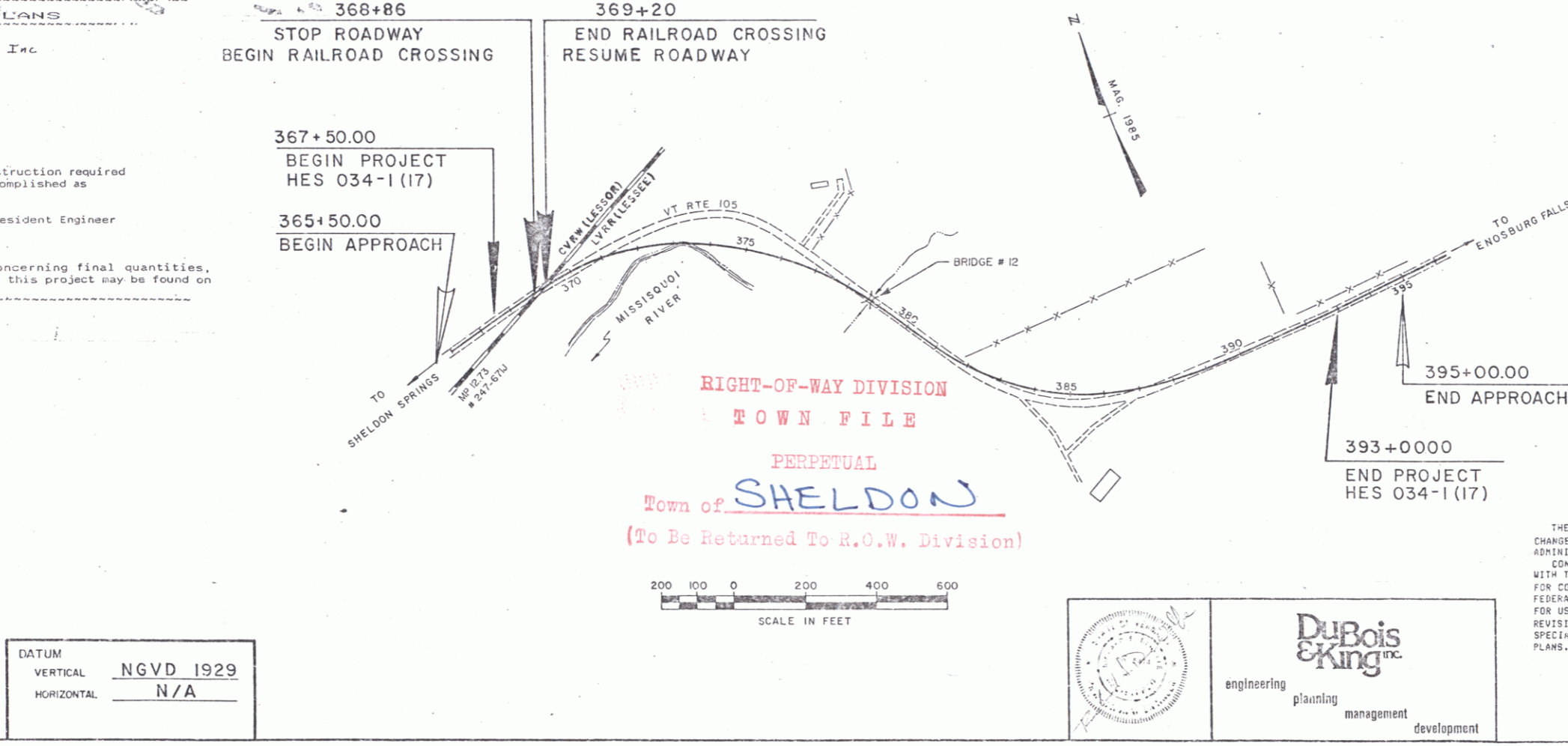
RECORD PLANS BY **J. Marcell**

I hereby certify that all the construction required
by this set of drawings has been accomplished as
indicated herein.

By **Edward W. Hayes** Resident Engineer
Date **April 18, 1992**

NOTE: Any further information concerning final quantities,
amounts or other details relative to this project may be found
microfilm in Central Files.

CONVENTIONAL SIGNS	
COUNTY LINE	---
TOWN LINE	- - - -
LIMITS OF ACCESS	○
POINT OF ACCESS	X
FENCE LINE	— · — · — ·
STONE WALL	— · — · — ·
TRAVELED WAY	— · — · — ·
GUARD RAIL	— · — · — ·
RAILROAD	— · — · — ·
SURVEY LINE	— · — · — ·
CULVERT	— · — · — ·
POWER POLE	○
TELEPHONE POLE	○
TREES	○
CONTROL OF ACCESS	///
PROPERTY LINE	— · — · — ·
ROW TAKING LINE	— · — · — ·
SLOPE RIGHTS	○ SR △
TOP OF CUT	△
TOE OF SLOPE	○
EXISTING DITCH	— · — · — ·
NEW DITCH	— · — · — ·



**CONSTRUCTION
PLANS**

TRAFFIC DATA	
1988 ADT	= 3260
2008 ADT	= 4390
2008 DHV	= 600
D	= 57%
T	= 9%
V	= 50 MPH

THESE PLANS ARE SUBJECT TO SUCH ENGINEERING
CHANGES AS MAY BE REQUIRED BY THE FEDERAL HIGHWAY
ADMINISTRATION OR THE AGENCY SECRETARY.
CONSTRUCTION IS TO BE CARRIED ON IN ACCORDANCE
WITH THESE PLANS AND THE STANDARD SPECIFICATIONS
FOR CONSTRUCTION DATED 1984, AS APPROVED BY THE
FEDERAL HIGHWAY ADMINISTRATION ON NOVEMBER 21, 1985
FOR USE ON THIS PROJECT, INCLUDING ALL SUBSEQUENT
REVISIONS AND SUCH REVISED SPECIFICATIONS AND
SPECIAL PROVISIONS AS ARE INCORPORATED IN THESE
PLANS.

SUBMITTED BY ORDER OF THE STATE TRANSPORTATION BOARD	
APPROVED <i>Arthur J. G...</i>	DATE <i>12/27/89</i>
DIRECTOR OF PLANNING	
DEPARTMENT OF TRANSPORTATION	
FEDERAL HIGHWAY ADMINISTRATION	
APPROVED <i>Frank L. ...</i>	DATE <i>8/11/90</i>
DIVISION ADMINISTRATOR	
SHELDON	
PROJECT HES # 034-1 (17)	
SHEET 1A	SHEETS

DuBois & King, Inc.
engineering planning management development

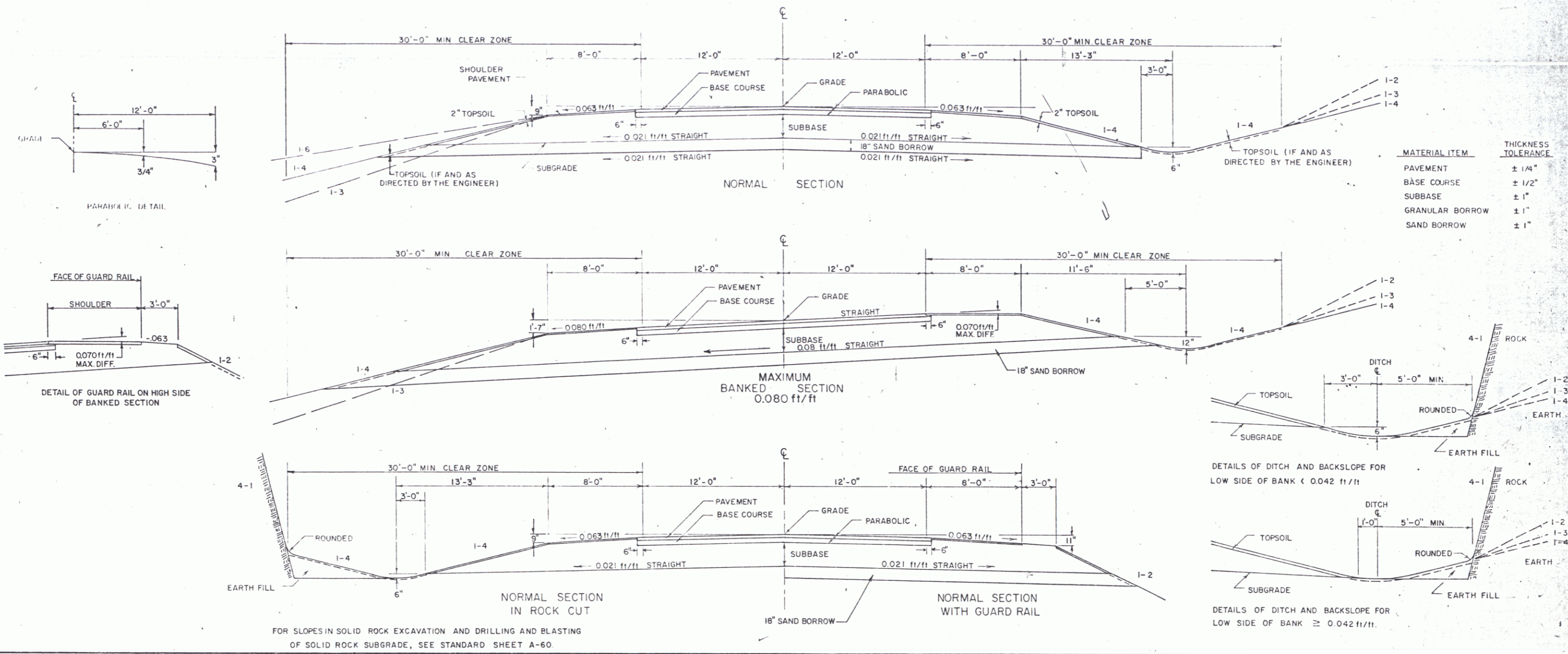
DATUM
VERTICAL **NGVD 1929**
HORIZONTAL **N/A**



TYPICAL SECTIONS

- 3" BITUMINOUS CONCRETE PAVEMENT (TYPE II 1 1/4" LIFT OVER TYPE II 1 3/4" LIFT)
- 5" BITUMINOUS CONCRETE PAVEMENT (TYPE I)
- 24" SUBBASE OF GRAVEL
- SHOULDERS 1 1/4" BITUMINOUS CONCRETE PAVEMENT TYPE III
- 18" SAND BORROW

NOTE: ALL FROST SUSCEPTIBLE MATERIAL WITHIN 50" (DESIGN FROST DEPTH) OF FINISH GRADE SHALL BE REMOVED AND REPLACED WITH FROST FREE MATERIAL.



MATERIAL ITEM	THICKNESS TOLERANCE
PAVEMENT	± 1/4"
BASE COURSE	± 1/2"
SUBBASE	± 1"
GRANULAR BORROW	± 1"
SAND BORROW	± 1"

RURAL SEEDING FORMULA			
% WT.	LBS./A.	PUR %	GERM %
3.33	2	97	75
50.00	30	98	85
8.33	5	99	85
16.67	10		
8.34	5	95	65
8.33	5	99	85
5.00	3	98	85
100.00	40	72	85

- GENERAL NOTES**
- SEED - To be applied per Seeding Formula as directed by the Engineer.
 - FERTILIZER - Formula 10-20-10 to be used with seed, applied at the rate of 500 lbs/Acre.
 - AGRICULTURAL LIMESTONE - To be applied at the rate of 2 tons/Acre or as directed by the Engineer.
 - HAY MULCH - To be placed on earth slopes at the rate of 2 tons/Acre.
 - TOPSOIL - To be used with seed as indicated on the plans or as directed by the Engineer.
 - MARKER POSTS - (Wood or Steel, as specified) - To be placed as directed by the Engineer.
 - SLOPE ROUNDING - All cut slopes to be rounded in accordance with Standard Sheet B-5.
 - PAY LIMITS OF SAND BORROW WHEN USED IN CONJUNCTION WITH UNDERDRAIN - See Standard Sheet D-2.
 - FOR METHOD OF CONSTRUCTING EMBANKMENT ON AN EARTH SLOPE - See Standard Sheet B-5.

TYPICAL SECTIONS FOR

PROJECT SHELDON

NO. HES 034-1(17)

SHEET 2 OF 6 SHEETS

MAY 5 1992

TABLE OF PROJECT PROPERTY ACQUISITION

STATE OF VERMONT
AGENCY OF TRANSPORTATION
RIGHT OF WAY PLANS
DETAIL SHEET

PARCEL NO.	GRANTOR	SHEET NO.	BEGINNING STATION	ENDING STATION	TAKING	REM.	RIGHTS	TITLE TAKEN	DATE	TOWN OR CITY RECORDED	BK.	PG.	REMARKS	REVISION NO.	SHEET	DESCRIPTION OF REVISION	DATE	MADE BY	APPROVED BY
1A	PARENT, ROBERT S. & DIANE M.	5	366+20 LT. 368+42 LT. 368+84 LT. 368+00 LT.	369+23 LT. 369+74 LT. 369+60 LT. 369+30 LT.	0.15A±		CONST. EASE. (T) 0.03A± DITCH (P) 0.01A± REMOVE & RESET (T)	WD	8-24-89	SHELDON	45	35-37	1200 S.F.± 590 S.F.± 4" UNDERDRAIN, BY OPTION ONLY	1	3,5	PARCEL NO. 2 CHANGE TITLE TO LAMOILLE VALLEY RAILROAD (LESSEE) CENTRAL VERMONT RAILWAY (LESSOR) PER C.O. 7586.	2-07-89	A.S.J.	K.D.P.
1B		5	368+75 RT. 368+55 RT. 368+90 RT. 369+10 RT.	372+88 RT. 369+86 RT. 369+83 RT.	0.40A±		CONST. EASE. (T) 0.03A± SLOPE (T) 0.02A± DRIVE (T)						1150 S.F.± 775 S.F.± 16' GRAVEL MP 0700	2	3,5	PARCEL NO. 1 PARENT. ADDED 2 DRIVES, CHANGED CONST. EASE. & ADDED SLOPE RT. PER C.O. 7626.	2-21-89	J.D.P.	J.D.P.
1C		5	266+20 RT.	368+25 LT.	0.12A±		ALL R.T. & I.						HWY. EASE. VT. RTE. 105	3	4,5	PARCEL NO. 4 DODD. ADDED DRIVE & CULVERT (T) TO 4B. PER C.O. 7627.	2-21-89	J.D.P.	J.D.P.
1D		5	369+35 RT. 371+00 LT. 372+50 LT.	372+90 LT. 372+70 LT.	0.32A±		ALL R.T. & I. DRIVE (T) CONST. EASE. (T) 36 S.F.±						HWY. EASE. VT. RTE. 105 16' GRAVEL MP 0702	4	3,4,6	PARCEL NO. 4 DODD & PARCEL NO. 3 HARTMAN DELETE PARCEL 3C & SLOPE WITH PARCEL. INCREASE 4C TO 0.42A± AND ENDING STATION OF 393+55 RT. ADD SLOPE (T) 393+55 RT. TO 393+83 RT. 0.01A±, 225 S.F.±, INCREASE 4D TO 1.41A± AND ENDING STA. TO 393+55 CL. PER C.O. 7617	2-24-89	M.J.R.	J.D.P.
2	LAMOILLE VALLEY RAILROAD (LESSEE) CENTRAL VERMONT RAILWAY (LESSOR)	5						AGREE						5	3	PARCEL NO. 3 HARTMAN CHANGE AREA OF TAKE FOR 3B FROM 0.45A± TO 0.90A± PER CO 07672	4-17-89	A.S.J.	J.D.P.
3A	HARTMAN, GEORGE E. & LOUISE A.	5	372+80 LT.	376+22 RT.	0.60A±			COND	8-27-89	SHELDON	45	115-118		6	3,5,6	PARCEL 3, "B" CHANGE DRIVE STA. & ADD BY OPTION ONLY A SLOPE AREA AND A EASE. PARCEL "D" ADD DRIVE PER C.O. 7708	5-9-89	J.D.P.	J.D.P.
3B		6	381+54 LT. 381+82 LT. 381+85 LT. 383+10 LT. 390+25 LT. 388+10 LT. 389+00 LT. 390+05 LT. 390+74 LT. 387+60 LT. 390+70 LT.	394+34 LT. 381+92 LT. 384+75 LT. 383+92 LT. 393+10 LT. 389+27 LT. 392+00 LT. 390+15 LT.	0.90A±		DITCH (P) 15 S.F.± CONST. EASE. (T) 0.06A± SLOPE (T) 0.01A± DRIVE (T) CONST. EASE. (T) 0.14A± SLOPE (T) 24 S.F.± SLOPE (T) 0.02A± CUL. DIT. & DR. (P) SLOPE EASE. (T) 0.06A±						2831 S.F.± 520 S.F.± 16' GRAVEL M.P. 0739 763 S.F.± 2492 S.F.± BY OPTION ONLY TO ENTER LAND FOR DITCH CLEANING BY OPTION ONLY	7	3,4,5,6	PARCEL 4 "B" CHANGE DRIVE STA. & WIDTH "D" CHANGE DRIVE WIDTH PER C.O. 7707	5-9-89	J.D.P.	J.D.P.
3C	DELETED PARCEL 3 CONT. ON NEXT SHEET							AGREE	6-26-90					8	4,5,6	Mylara To Design	10-2-89		

MAY 5 1992

<p>DR. RT. - DRAINAGE RIGHT DIT. RT. - DITCHING RIGHT CH. RT. - CHANNEL RT. DRIVE RT. - DRIVE RIGHT CUL. RT. - CULVERT RIGHT (D) - DEMOLITION OR REMOVAL (W) - WATER SOURCES</p>	<p>PRESENT R.O.W. TAKING WITHOUT ACCESS TAKING WITHOUT ACCESS ALONG PROPERTY LINE TAKING WITH ACCESS PERMANENT EASEMENT TEMPORARY EASEMENT</p>	<p>LEGEND --- CONST. EASE. --- CONSTRUCTION EASEMENT SR SR SLOPE RIGHTS P PROPERTY LINE L TOP OF CUT O O TOE OF SLOPE</p>	<p>R. O. W. PLANS SHELDON HES 034-1(17) SHEET 3 OF 6</p>
--	--	---	--

TABLE OF PROJECT PROPERTY ACQUISITION

STATE OF VERMONT
AGENCY OF TRANSPORTATION
RIGHT OF WAY PLANS
DETAIL SHEET

PARCEL NO.	GRANTOR	SHEET NO.	BEGINNING STATION	ENDING STATION	TAKING	REM.	RIGHTS	TITLE TAKEN	DATE	TOWN OR CITY RECORDED	BK.	PG.	REMARKS	REVISION NO.	SHEET	DESCRIPTION OF REVISION	DATE	MADE BY	APPROVED BY
1A	PARENT, ROBERT S. & DIANE M.	5	366+20 LT. 368+42 LT. 368+84 LT. 368+00 LT.	369+23 LT. 369+74 LT. 369+60 LT. 369+30 LT.	0.15A±		CONST. EASE. (T) 0.03A± DITCH (P) 0.01A± REMOVE & RESET (T)	WD	8-24-89	SHELDON	45	35-37	1200 S.F.± 590 S.F.± 4" UNDERDRAIN, BY OPTION ONLY	1	3,5	PARCEL NO. 2 CHANGE TITLE TO LAMILLE VALLEY RAILROAD (LESSEE) CENTRAL VERMONT RAILWAY (LESSOR) PER C.O. 7588.	2-07-89	A.S.J.	K.D.P.
1B		5	368+75 RT. 368+55 RT. 368+90 RT. 369+10 RT.	372+88 RT. 369+86 RT. 369+83 RT.	0.40A±		CONST. EASE. (T) 0.03A± SLOPE (T) 0.02A± DRIVE (T)						1150 S.F.± 775 S.F.± 16' GRAVEL MP 0700	2	3,5	PARCEL NO. 1 PARENT. ADDED 2 DRIVES, CHANGED CONST. EASE. & ADDED SLOPE RT. PER C.O. 7626.	2-21-89	J.D.P.	J.D.P.
1C		5	266+20 RT.	368+25 LT.	0.12A±		ALL R.T. & I.						HWY. EASE. VT. RTE. 105	3	4,5	PARCEL NO. 4 DODD. ADDED DRIVE & CULVERT (T) TO 4B. PER C.O. 7627.	2-21-89	J.D.P.	J.D.P.
1D		5	369+35 RT. 371+00 LT. 372+50 LT.	372+80 LT. 372+70 LT.	0.32A±		ALL R.T. & I. DRIVE (T) CONST. EASE. (T) 36 S.F.±						HWY. EASE. VT. RTE. 105 16' GRAVEL MP 0702	4	3,4,6	PARCEL NO. 4 DODD & PARCEL NO. 3 HARTMAN DELETE PARCEL 3C & SLOPE WITH PARCEL INCREASE 4C TO 0.42A± AND ENDING STATION OF 393+55 RT. ADD SLOPE (T) 393+55 RT. TO 393+83 RT. 0.01A±, 225 S.F.±, INCREASE 4D TO 1.41A± AND ENDING STA. TO 393+55 CL. PER C.O. 7617	2-24-89	M.J.R.	J.D.P.
2	LAMILLE VALLEY RAILROAD (LESSEE) CENTRAL VERMONT RAILWAY (LESSOR)	5						AGREE.						5	3	PARCEL NO. 3 HARTMAN CHANGE AREA OF TAKE FOR 3B FROM 0.45A± TO 0.90A± PER CO 07672	4-17-89	A.S.J.	
3A	HARTMAN, GEORGE E. & LOUISE A.	5	372+80 LT.	376+22 RT.	0.60A±			WD		SHELDON				6	3,5	PARCEL 1, CHANGE DRIVE STA. & ADD BY OPTION ONLY, UNDERDRAIN PER C.O. 7706	5-9-89	JDP	JDP
3B		6	381+54 LT. 381+82 LT. 381+85 LT. 383+10 LT. 390+25 LT. 389+10 LT. 389+00 LT. 390+05 LT. 390+74 LT. 387+40 LT. 390+70 LT.	394+34 LT. 381+92 LT. 384+75 LT. 383+92 LT. 393+10 LT. 389+27 LT. 392+00 LT. 390+15 LT.	0.90A±		DITCH (P) 15 S.F.± CONST. EASE. (T) 0.06A± SLOPE (T) 0.01A± DRIVE (T) CONST. EASE. (T) 0.14A± SLOPE (T) 24 S.F.± SLOPE (T) 0.02A± CUL. DIT. & DR. (P) SLOPE (T) 0.06A± EASE. (T)						2831 S.F.± 520 S.F.± 16' GRAVEL M.P. 0739 763 S.F.± 2492 S.F.± BY OPTION ONLY TO ENTER LAND FOR DITCH CLEANING BY OPTION ONLY	7	3,4,5,6	PARCEL 3, "B" CHANGE DRIVE STA. & ADD BY OPTION ONLY A SLOPE AREA AND A EASE. PARCEL "D" ADD DRIVE PER C.O. 7708	5-9-89	JDP	JDP
3C	DELETED PARCEL 3 CONT. ON NEXT SHEET													8	4,5,6	PARCEL 4 "B" CHANGE DRIVE STA. & WIDTH "D" CHANGE DRIVE WIDTH PER C.O. 7707	5-9-89	JDP	JDP

THIS SHEET TO BE USED
FOR ROW. INFORMATION ONLY

ROW. PLANS

DR. RT.- DRAINAGE RIGHT
DIT. RT.- DITCHING RIGHT
CH. RT.- CHANNEL RT.
DRIVE RT.- DRIVE RIGHT
CUL. RT.- CULVERT RIGHT
(D)- DEMOLITION OR REMOVAL
[W]- WATER SOURCES

PRESENT R.O.W.
TAKING WITHOUT ACCESS
TAKING WITHOUT ACCESS ALONG PROPERTY LINE
TAKING WITH ACCESS
PERMANENT EASEMENT
TEMPORARY EASEMENT

LEGEND
--- CONST. EASE. --- CONSTRUCTION EASEMENT
SR SR SLOPE RIGHTS
P PROPERTY LINE
L TOP OF CUT
O TOE OF SLOPE

APPROVED: LAWRENCE W. BLISS DATE: 1-30-89
AGENT D, PLANS & TITLES

R. O. W. PLANS
SHELDON
HES 034-1(17)
SHEET 3A OF 8

TABLE OF PROJECT PROPERTY ACQUISITION

STATE OF VERMONT
AGENCY OF TRANSPORTATION
RIGHT OF WAY PLANS
DETAIL SHEET

PARCEL NO.	GRANTOR	SHEET NO.	BEGINNING STATION	ENDING STATION	TAKING	REM.	RIGHTS	TITLE TAKEN	DATE	TOWN OR CITY RECORDED	BK.	PG.	REMARKS	REVISION NO.	SHEET	DESCRIPTION OF REVISION	DATE	MADE BY	APPROVED BY	
30	HARTMAN, GEORGE E. & LOUISE A. (CONT.)	5	376+21 LT.	376+46 LT.	0.01A±								60 S.F. ±							
3E		5	372+70 LT. 372+70 LT. 373+50 LT. 375+50 LT. 375+65 LT. 375+75 LT. 376+10 LT. 373+00 LT.	376+43 LT. 376+47 LT. 374+03 LT. 375+92 LT. 375+75 LT. 375+80 LT.	0.43A±		ALL R.T. & I. CONST. EASE (T) 0.07A± SLOPE (T) 25 S.F. ± SLOPE (T) 0.01A± CULVERT (P) DITCH (P) DRIVE (T) DRIVE (T)						HWY. EASE. VT. RTE. 105 3200 S.F. ± 414 S.F. ± 12' GRAVEL M.P. 0712 16' GRAVEL M.P. 0707							
3F		6	381+35 RT.	393+55 LT.	0.69A±		ALL R.T. & I.						HWY. EASE. VT. RTE. 105							
4A	DODD, RUSSELL H. & ELEANOR D.	5, 6	375+75 RT. 375+70 RT. 375+75 RT. 378+00 RT. 379+10 RT.	383+15 RT. 377+88 RT. 377+58 RT. 378+80 RT. 381+82 RT.	0.55A±		CONST. EASE. (T) 0.04A± SLOPE (P) 0.03A± CHANNEL (P) 0.05A± CONST. EASE. (T) 0.03A±	MO	8-15-89	SHELDON	45	3-5	1750 S.F. ± 1490 S.F. ± 2000 S.F. ± 1250 S.F. ±							
4B	DODD, RUSSELL H. & ELEANOR D.	5, 6	376+43 LT. 376+46 LT. 376+46 LT. 376+60 LT. 376+75 LT. 378+20 LT. 378+85 LT. 378+98 LT. 381+14 LT. 381+00 LT.	381+82 LT. 378+05 LT. 378+20 LT. 378+95 LT. 382+00 LT. 381+85 LT. 381+62 LT.	0.24A±		SLOPE (T) 0.06A± CONST. EASE. (T) 0.04A± DRIVE (T) CULVERT (T) CHANNEL (P) 0.07A± CONST. EASE. (T) 0.07A± DITCH (P) 0.06A± CULVERT (P) DRIVE (T)						2620 S.F. ± 1850 S.F. ± 16' GRAVEL M.P. 0713 FOR DRIVE 2925 S.F. ± 2900 S.F. ± 2972 S.F. ± 16' GRAVEL M.P. 0722							
4C		6	385+23 RT. 382+53 RT. 390+74 RT. 391+22 RT. 393+55 RT.	393+55 RT. 392+35 RT. 392+08 RT. 393+83 RT.	0.42A±		CONST. EASE. (T) 0.18A± DITCH (P) SLOPE (T) 130 S.F. ± SLOPE (T) 0.01A±						225 S.F. ±							
4D		5, 6	376+22 RT. 382+90 RT. 383+75 RT. 384+68 RT.	393+55 CL. 383+30 RT. 385+50 RT.	1.41A±		ALL R.T. & I. SLOPE (T) 80 S.F. ± DRIVE (T) SLOPE (T) 0.01A±						HWY. EASE. VT. RTE. 105 16' GRAVEL M.P. 0727 280 S.F. ±							
5	VERMONT ELECTRIC CO-OP							COND	9-27-89		45	115-118	UTILITY							
6	NEW ENGLAND TELEPHONE CO.							COND	9-27-89		45	115-118	UTILITY							

MAY 5 1992

<p>DR. RT.- DRAINAGE RIGHT DIT. RT.- DITCHING RIGHT CH. RT.- CHANNEL RT. DRIVE RT.- DRIVE RIGHT CUL. RT.- CULVERT RIGHT ⓓ- DEMOLITION OR REMOVAL Ⓜ- WATER SOURCES</p>	<p>PRESENT R.O.W. TAKING WITHOUT ACCESS TAKING WITHOUT ACCESS ALONG PROPERTY LINE TAKING WITH ACCESS PERMANENT EASEMENT TEMPORARY EASEMENT</p>	<p>LEGEND</p> <p>--- CONST. EASE. --- CONSTRUCTION EASEMENT SR SR SLOPE RIGHTS P PROPERTY LINE L TOP OF CUT △ TOE OF SLOPE</p>	<p>R. O. W. PLANS</p> <p>SHELDON HES 034-1(17) SHEET 4 OF 6</p>
---	--	--	---

APPROVED: LAWRENCE W. BLISS DATE: 1-30-89
AGENT D. PLANS & TITLES

PROP. ADEN. 5-87

**STATE OF VERMONT
AGENCY OF TRANSPORTATION
RIGHT OF WAY PLANS
DETAIL SHEET**

TABLE OF PROJECT PROPERTY ACQUISITION

PARCEL NO.	GRANTOR	SHEET NO.	BEGINNING STATION	ENDING STATION	TAKING	REM.	RIGHTS	TITLE TAKEN	DATE	TOWN OR CITY RECORDED	BK.	PG.	REMARKS	REVISION NO.	SHEET	DESCRIPTION OF REVISION	DATE	MADE BY	APPROVED BY	
3D	HARTMAN, GEORGE E. & LOUISE A. (CONT.)	5	376+21 LT.	376+46 LT.	0.01A±								60 S.F.±							
3E		5	372+70 LT. 372+70 LT. 373+50 LT. 375+50 LT. 375+65 LT. 375+75 LT. 376+10 LT. 373+00 LT.	376+43 LT. 376+47 LT. 374+03 LT. 375+92 LT. 375+75 LT. 375+80 LT.	0.43A±		ALL R.T. & I. CONST. EASE (T) 0.07A± SLOPE (T) 25 S.F.± SLOPE (T) 0.01A± CULVERT (P) DITCH (P) DRIVE (T) DRIVE (T)						HWY. EASE. VT. RTE. 105 3200 S.F.± 414 S.F.± 12' GRAVEL M.P. 0712 16' GRAVEL M.P. 0707							
3F		6	381+35 RT.	393+55 LT.	0.69A±		ALL R.T. & I.						HWY. EASE. VT. RTE. 105							
4A	DODD, RUSSELL H. & ELEANOR D.	5, 6	375+75 RT. 375+70 RT. 375+75 RT. 378+00 RT. 379+10 RT.	383+15 RT. 377+88 RT. 377+58 RT. 378+80 RT. 381+82 RT.	0.55A±		CONST. EASE. (T) 0.04A± SLOPE (P) 0.03A± CHANNEL (P) 0.05A± CONST. EASE. (T) 0.03A±	MD	8-15-89	SHELDON	45	3-5	1750 S.F.± 1490 S.F.± 2000 S.F.± 1250 S.F.±							
4B	DODD, RUSSELL H. & ELEANOR D.	5, 6	376+43 LT. 376+46 LT. 376+46 LT. 376+60 LT. 376+75 LT. 378+20 LT. 378+85 LT. 378+98 LT. 381+14 LT. 381+00 LT.	381+82 LT. 378+05 LT. 378+20 LT. 378+85 LT. 382+00 LT. 381+85 LT. 381+62 LT.	0.24A±		SLOPE (T) 0.06A± CONST. EASE. (T) 0.04A± DRIVE (T) CULVERT (T) CHANNEL (P) 0.07A± CONST. EASE. (T) 0.07A± DITCH (P) 0.06A± CULVERT (P) DRIVE (T)						2620 S.F.± 1850 S.F.± 16' GRAVEL M.P. 0713 FOR DRIVE 2925 S.F.± 2900 S.F.± 2572 S.F.± 16' GRAVEL M.P. 0722							
4C		6	385+23 RT. 382+53 RT. 390+74 RT. 391+22 RT. 393+55 RT.	393+55 RT. 392+35 RT. 392+08 RT. 393+83 RT.	0.42A±		CONST. EASE. (T) 0.18A± DITCH (P) SLOPE (T) 130 S.F.± SLOPE (T) 0.01A±						225 S.F.±							
4D		5, 6	376+22 RT. 382+90 RT. 383+75 RT. 384+68 RT.	393+55 CL. 383+30 RT. 385+50 RT.	1.41A±		ALL R.T. & I. SLOPE (T) 80 S.F.± DRIVE (T) SLOPE (T) 0.01A±						HWY. EASE. VT. RTE. 105 16' GRAVEL M.P. 0727 280 S.F.±							
5	VERMONT ELECTRIC CO-OP												UTILITY							
6	NEW ENGLAND TELEPHONE CO.												UTILITY							

THIS SHEET TO BE USED
FOR ROW INFORMATION ONLY

ROW PLANS

DR. RT.- DRAINAGE RIGHT
DIT. RT.- DITCHING RIGHT
CH. RT.- CHANNEL RT.
DRIVE RT.- DRIVE RIGHT
CUL. RT.- CULVERT RIGHT
Ⓣ- DEMOLITION OR REMOVAL
Ⓛ- WATER SOURCES

PRESENT R.O.W.
TAKING WITHOUT ACCESS
TAKING WITHOUT ACCESS ALONG PROPERTY LINE
TAKING WITH ACCESS
PERMANENT EASEMENT
TEMPORARY EASEMENT

LEGEND
--- CONST. EASE. --- CONSTRUCTION EASEMENT
SR SR SLOPE RIGHTS
P PROPERTY LINE
△ TOP OF CUT
○ TOE OF SLOPE

APPROVED: LAWRENCE W. BLISS, DATE: 1-20-89
AGENT D. PLANS & TITLES

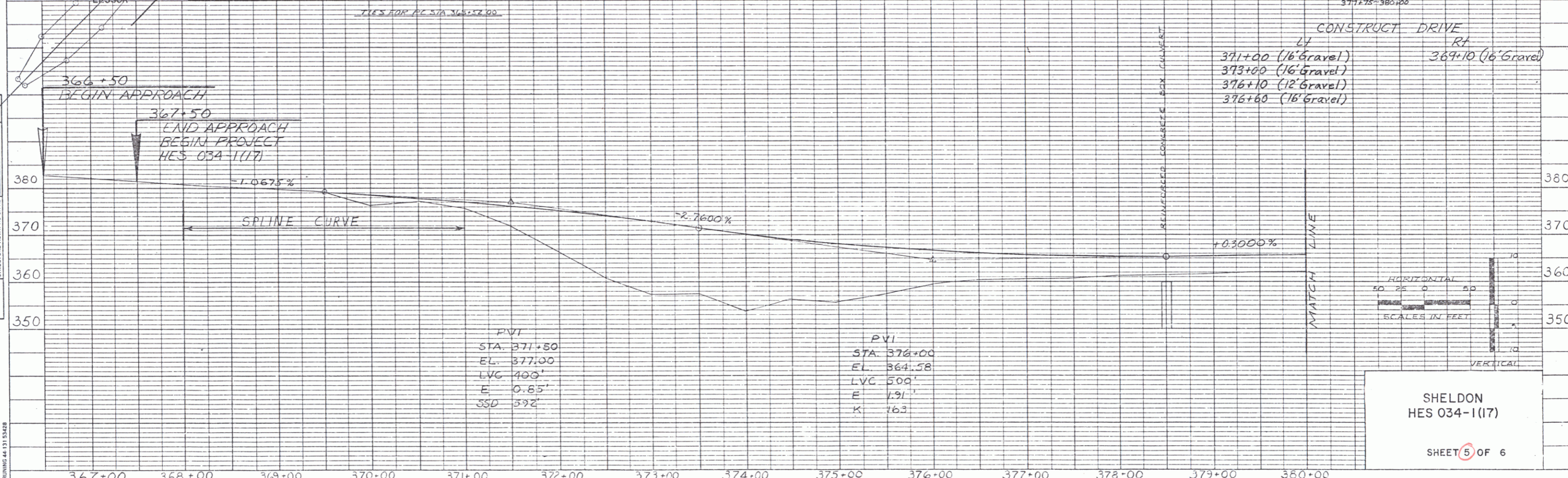
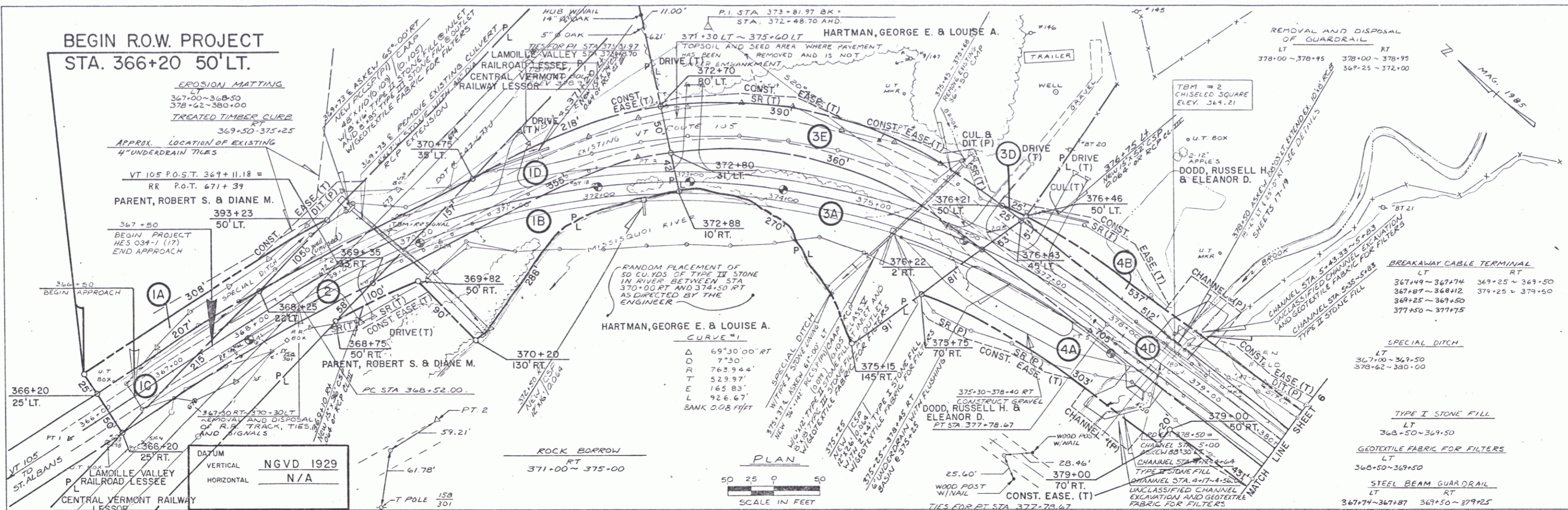
R. O. W. PLANS
SHELDON
HES 034-1(17)
SHEET 4A OF 5

PROP. ACQ. N. 9-87

BEGIN R.O.W. PROJECT
STA. 366+20 50' LT.

PLAN	DESIGNED	BY	DATE
	CHECKED		
	IN CHARGE		
	DATE		

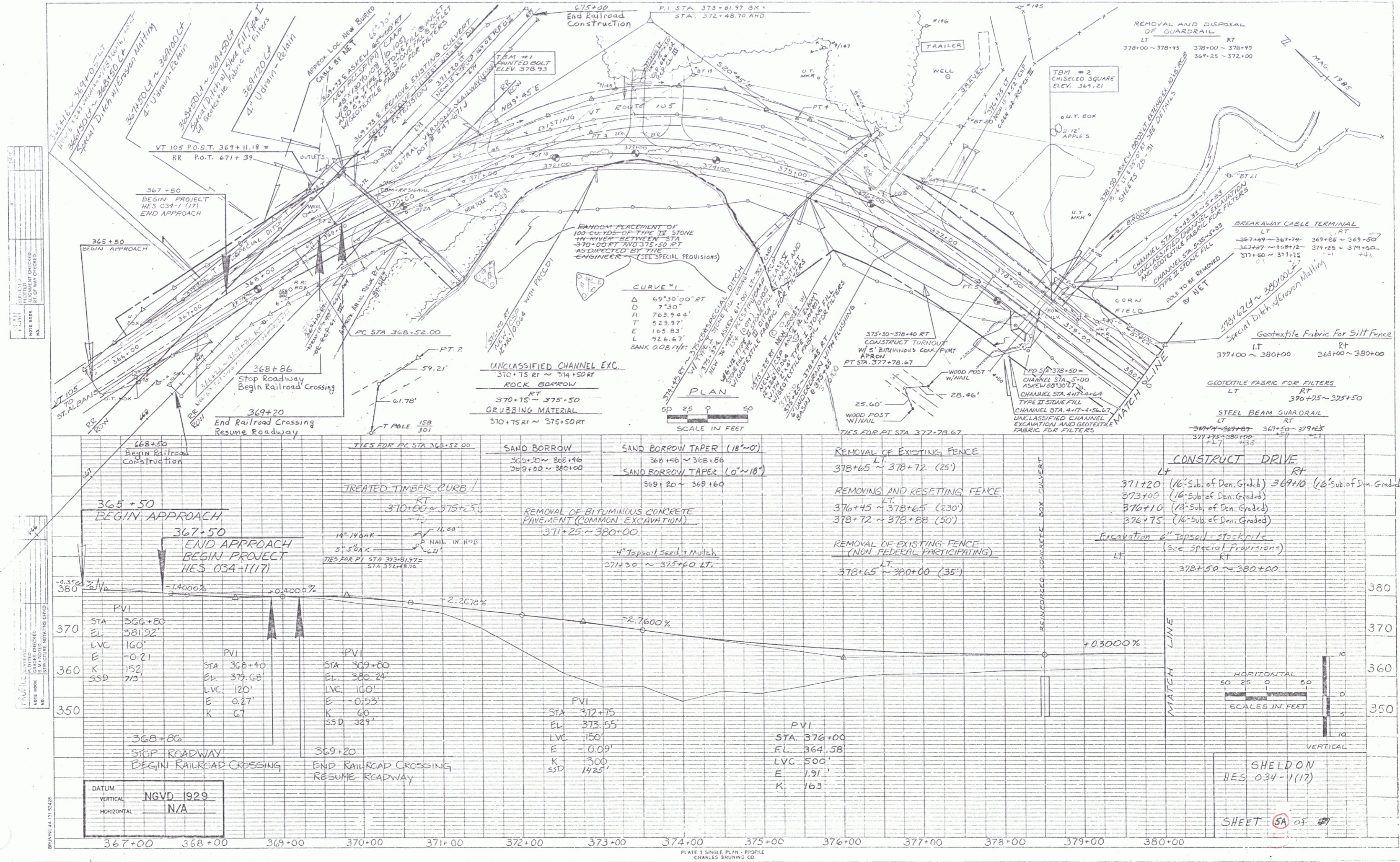
PROFILE	DESIGNED	BY	DATE
	CHECKED		
	IN CHARGE		
	DATE		



SHELDON
HES 034-1(17)
SHEET 5 OF 6

MAY 5 1992

8



DATE	11/11/17
SCALE	AS SHOWN
PROJECT	SHeldon
DATE	11/11/17
SCALE	AS SHOWN
PROJECT	SHeldon

DATE	11/11/17
SCALE	AS SHOWN
PROJECT	SHeldon
DATE	11/11/17
SCALE	AS SHOWN
PROJECT	SHeldon

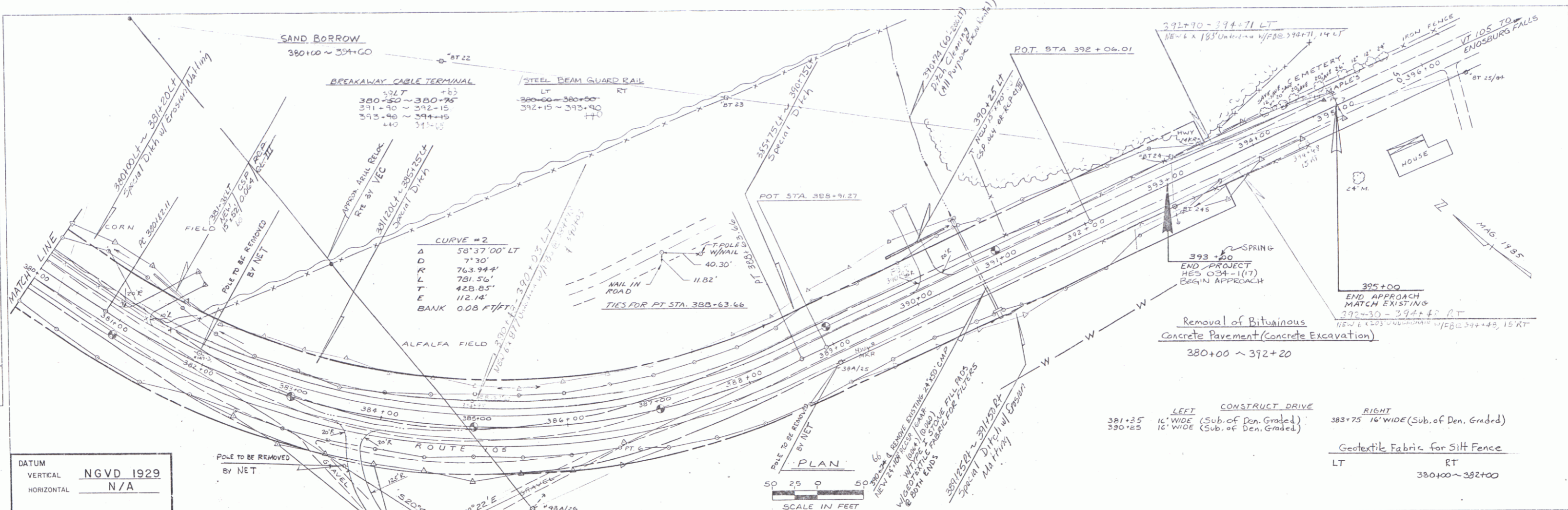
DATUM
VERTICAL NGVD 1929
HORIZONTAL N/A

PLATE 1 SINGLE PLAN - PROFILE
CHARLES BRUNING CO.

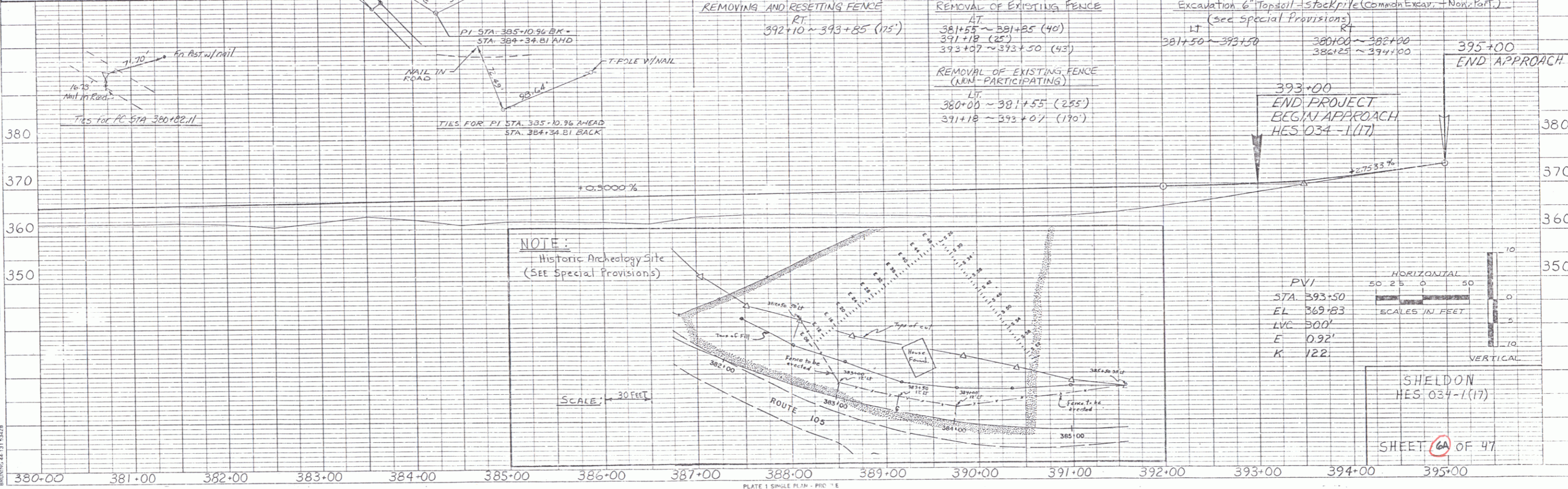
SHeldon
HES 034-1(17)

SHEET SA OF 47

DESIGNED BY: [Name]
 CHECKED BY: [Name]
 DATE: [Date]



DATUM
 VERTICAL NGVD 1929
 HORIZONTAL N/A



PROFILE
 CHECKED BY: [Name]
 DATE: [Date]

SHELDON
 HES 034-1(17)
 SHEET 6A OF 47