

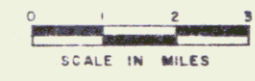
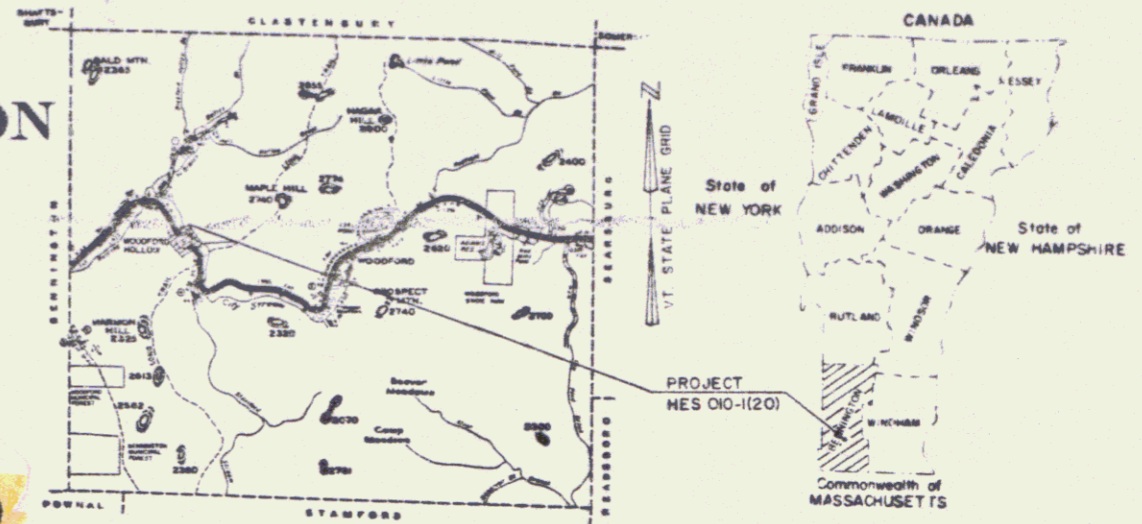
INDEX OF SHEETS

1)	TITLE SHEET
2-3)	TYPICAL SECTIONS
4)	DRAINAGE AND ITEM QUANTITY SHEET
5)	EARTHWORK AND GRADE SHEET
6-8)	PLAN AND PROFILE SHEETS
10-17)	MAINLINE CROSS SECTIONS
18-20)	DRIVEWAY SIDELINE CROSS SECTIONS

STATE OF VERMONT
AGENCY OF TRANSPORTATION



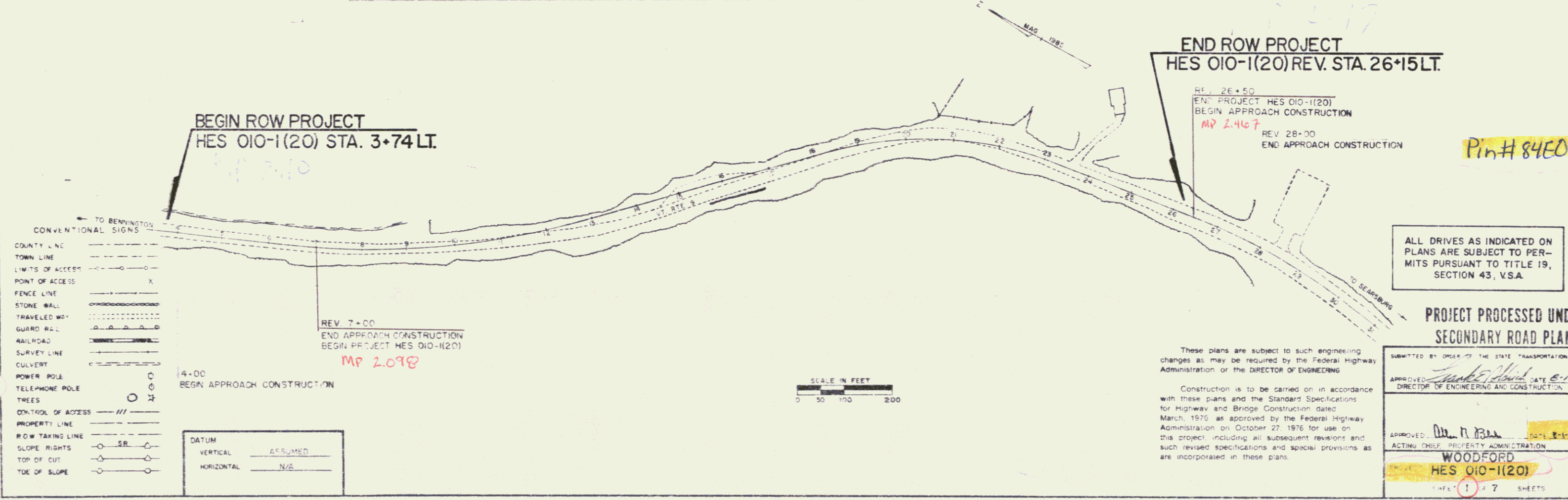
PROPOSED IMPROVEMENT
TOWN OF WOODFORD
COUNTY OF BENNINGTON
VT. ROUTE 9 (F.A.P.)



ROW PLANS

BEGINNING AT A POINT 2.098 MILES EASTERLY OF THE BENNINGTON-WOODFORD TOWN LINE AND EXTENDING EASTERLY 0.369 MILES
 LENGTH OF ROW PROJECT 2241.00 FT. = 0.424 MILES
 LENGTH OF ROADWAY 1950.00 FT. = 0.369 MILES
 LENGTH OF PROJECT 1950.00 FT. = 0.369 MILES

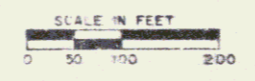
PROJECT CONSISTS OF IMPROVING THE HORIZONTAL ALIGNMENT WITH RECONSTRUCTED GRADING, DRAINAGE, SUBBASE, AND BITUMINOUS CONCRETE SURFACE.



- TO BENNINGTON
- CONVENTIONAL SIGNS
- COUNTY LINE
- TOWN LINE
- LIMITS OF ACCESS
- POINT OF ACCESS
- FENCE LINE
- STONE WALL
- TRAVELED WAY
- RAILROAD
- SURVEY LINE
- CULVERT
- POWER POLE
- TELEPHONE POLE
- TREES
- CONTROL OF ACCESS
- PROPERTY LINE
- ROW TAKING LINE
- SLOPE RIGHTS
- TOP OF CUT
- TOE OF SLOPE

DATUM

VERTICAL	ASSUMED
HORIZONTAL	N/A



END ROW PROJECT
HES 010-1(20) REV. STA. 26+15.15

R1: 26+50
END PROJECT HES 010-1(20)
BEGIN APPROACH CONSTRUCTION
MP 2.467
REV 28-00
END APPROACH CONSTRUCTION

Pin # 845072

ALL DRIVES AS INDICATED ON PLANS ARE SUBJECT TO PERMITS PURSUANT TO TITLE 19, SECTION 43, V.S.A.

PROJECT PROCESSED UNDER
SECONDARY ROAD PLAN

These plans are subject to such engineering changes as may be required by the Federal Highway Administration or the DIRECTOR OF ENGINEERING

Construction is to be carried on in accordance with these plans and the Standard Specifications for Highway and Bridge Construction dated March, 1976 as approved by the Federal Highway Administration on October 27, 1976 for use on this project including all subsequent revisions and such revised specifications and special provisions as are incorporated in these plans.

SUBMITTED BY ORDER OF THE STATE TRANSPORTATION BOARD

APPROVED: *[Signature]* DATE 6-1-88
DIRECTOR OF ENGINEERING AND CONSTRUCTION

APPROVED: *[Signature]* DATE 8-1-83
ACTING CHIEF, PROPERTY ADMINISTRATION

WOODFORD
HES 010-1(20)

SHEET 1 OF 7 SHEETS

STATE OF VERMONT
AGENCY OF TRANSPORTATION
RIGHT-OF-WAY PLANS
DETAIL SHEET

TABLE OF PROJECT PROPERTY ACQUISITION

PARCEL NO.	GRANTOR	SHEET NO.	BEGINNING STATION	ENDING STATION	TAKING	REM.	RIGHTS	TITLE TAKEN	DATE	TOWN OR CITY RECORDED	BK.	PG.	REMARKS
1A	UNITED STATES OF AMERICA - GREEN MOUNTAIN NATIONAL FOREST	5,6	REV. 8+50 LI	REV. 10+55 LI	0.41 A±		CONST. EASE. (T) (0.37 A±)	WD		WOODFORD			(175 SE±)
			3+74 LI	REV. 10+75 LI		SLOPE (P) (0.02 A±)							
			4+50 LI	5+90 LI		SLOPE (P) (1.05 SE±)							
			REV. 6+50 LI	REV. 7+25 LI		SLOPE (P) (0.13 A±)							
			REV. 7+75 LI	REV. 12+00 LI		CULVERT, DITCH & DRAINAGE (P)							
			REV. 9+09 LI			SLOPE (T) (0.47 A±)							
			REV. 12+00 LI	REV. 10+70 LI		DRAINAGE (P)							
			REV. 10+42 LI	REV. 17+72 LI		DITCH (P)							
			REV. 10+67 LI			DRAINAGE (P)							
			REV. 10+57 LI	REV. 10+75 LI		CULVERT (P)							
			REV. 10+00 LI	REV. 10+15 LI		DITCH (P)							
			REV. 10+05 LI			DRAINAGE (P)							
			REV. 10+10 LI	REV. 10+40 LI		CULVERT (P)							
			REV. 10+10 LI	REV. 10+05 LI		CULVERT (P)							
1B		5,6	REV. 10+50 RT	REV. 23+00 RT	0.05 A±		WD			WOODFORD			(2040 SE±)
			5+75 RT	REV. 12+40 RT		CONST. EASE. (T) (0.15 A±)							
			6+00 RT	REV. 11+75 RT		SLOPE (T) (0.10 A±)							
			REV. 9+09 RT			CULVERT & DITCH (P)							
			REV. 15+50 RT	REV. 24+00 RT		CONST. EASE. (T) (0.20 A±)							
			REV. 15+55 RT	REV. 16+80 RT									
			REV. 17+20 RT	REV. 17+75 RT		SLOPE (T) (0.05 SE±)							
			REV. 19+00 RT	REV. 20+20 RT		SLOPE (T) (0.02 A±)							
			REV. 20+20 RT	REV. 23+05 RT		DITCH (P) (0.12 A±)							
			REV. 20+15 RT	REV. 20+22 RT		CULVERT (P)							
			2	THURBER, ROBIN R. & LORRAINE H.		6	REV. 10+55 LI	REV. 23+00 LI				WD	
REV. 10+85 LI	REV. 20+25 LI	SLOPE (T) (0.20 A±)											
3	NEW ENGLAND TELEPHONE CO.		REV. 21+55 LI	REV. 23+05 LI									UTILITY
			REV. 23+05 LI			CULVERT (P)							
4	CENTRAL VERMONT PUBLIC SERVICE CORP.		REV. 23+05 LI										UTILITY
			REV. 23+80 LI	REV. 24+15 LI		DRIVE (T)							
			REV. 20+85 LI	REV. 22+20 LI		CULVERT (T)							
						SLOPE (T) (3.00 SE±)							

TABLE OF REVISIONS

REVISION NO.	SHEET NO.	DESCRIPTION OF REVISION	DATE	MADE BY	APPROVED BY
1	4,6	PARCEL No. 2 THURBER, DELETED CONST. EASE. (T); STA. 19+70-24+50 LI. (0.11A±) PER C.O. No. 6581	8-9-85	D.E.M.	L.W.B. <i>LWB</i>
2	6	PARCEL No. 2 THURBER, ADDED CONST. & LANDSCAPE NOTES TO LAYOUT & FILE PER C.O. No. 6580 MYLARS TO DESIGN 9-3-85	8-9-85	D.E.M.	L.W.B. <i>LWB</i>

MADE BY: DEM DATE 8-1-85
CHECKED BY: LWB DATE 8-1-85

DR. RT - DRAINAGE RIGHT
DIT. RT - DITCHING RIGHT
CH. RT - CHANNEL RIGHT
DRIVE RT - DRIVE RIGHT
CUL. RT - CULVERT RIGHT
D - DEMOLITION OR REMOVAL
W - WATER SOURCES

PRESENT R.O.W.
--- TAKING WITHOUT ACCESS
--- TAKING WITHOUT ACCESS ALONG PROPERTY LINES
--- TAKING WITH ACCESS
(P) PERMANENT EASEMENT
(T) TEMPORARY EASEMENT

LEGEND
--- CONST. EASE. --- CONST. EASEMENT
SR SR SLOPE RIGHTS
P L P L PROPERTY LINE
- - - - - TOP OF CUT
O O O O TOP OF SLOPE

APPROVED *Samuel W. Blinn* DATE 8/11/85
CHIEF OF PLANS & TITLES

PROJECT WOODFORD
NO. HES 010-1(20)
SHEET 4 OF 7

Steel Beam Guardrail
w/ Wood Posts Type II
Rev 4+00 to Rev 10+75 Lt.

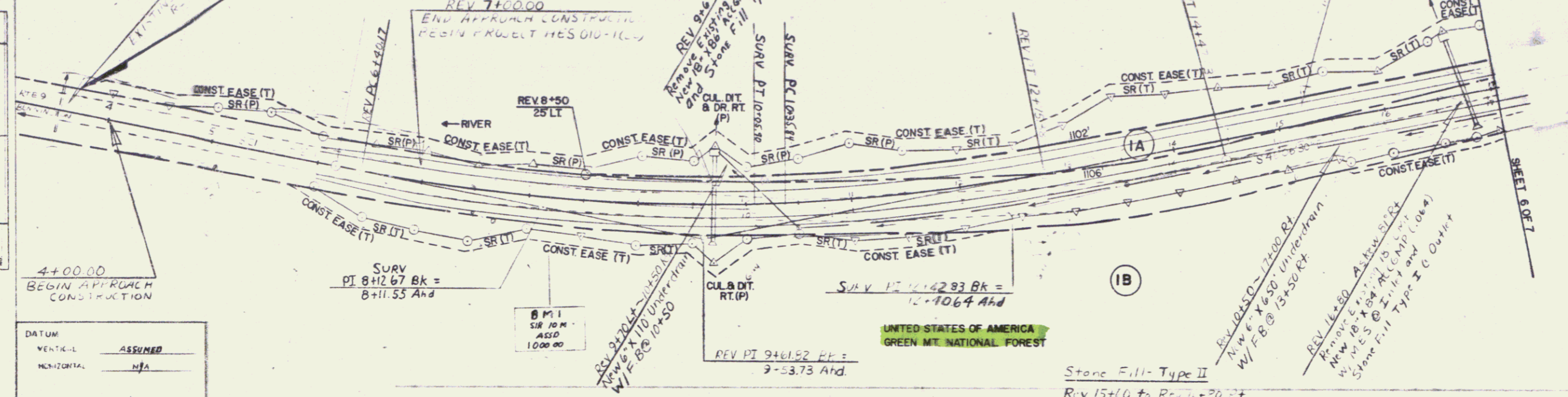
SURV. CURVE DATA
 Δ 10° 39' 30" LT
 D 22' 45"
 R 2088.48
 T 194.35
 L 387.58
 E 9.07

REV CURVE DATA
 Δ 22° 13' 56" LT
 D 3° 30'
 R 1637.02
 T 321.65
 L 635.21
 E 3-30
 FULL BANK .058

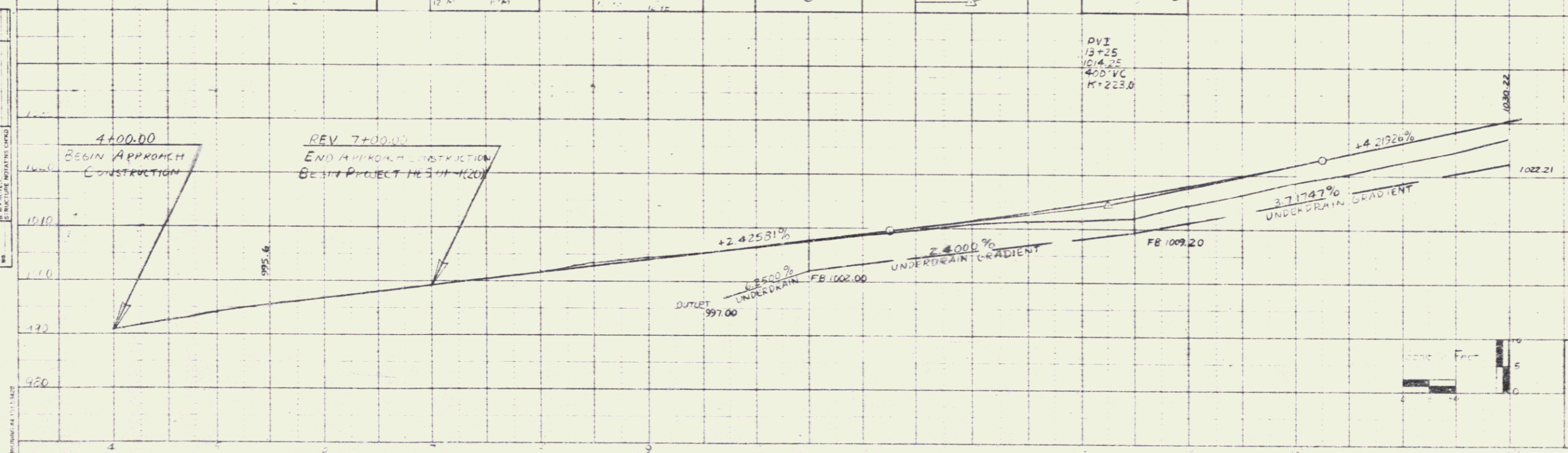
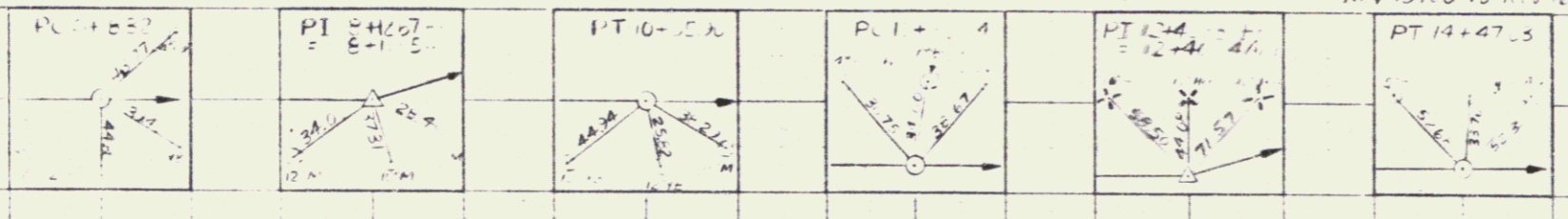
SURV CURVE DATA
 Δ 14° 24' 45" LT
 D 3° 30'
 R 1637.02
 T 201.99
 L 411.79
 E 13.04

POOR ORIGINAL COPY

BEGIN ROW PROJECT
HES 010-1(20) STA. 3+74LT.



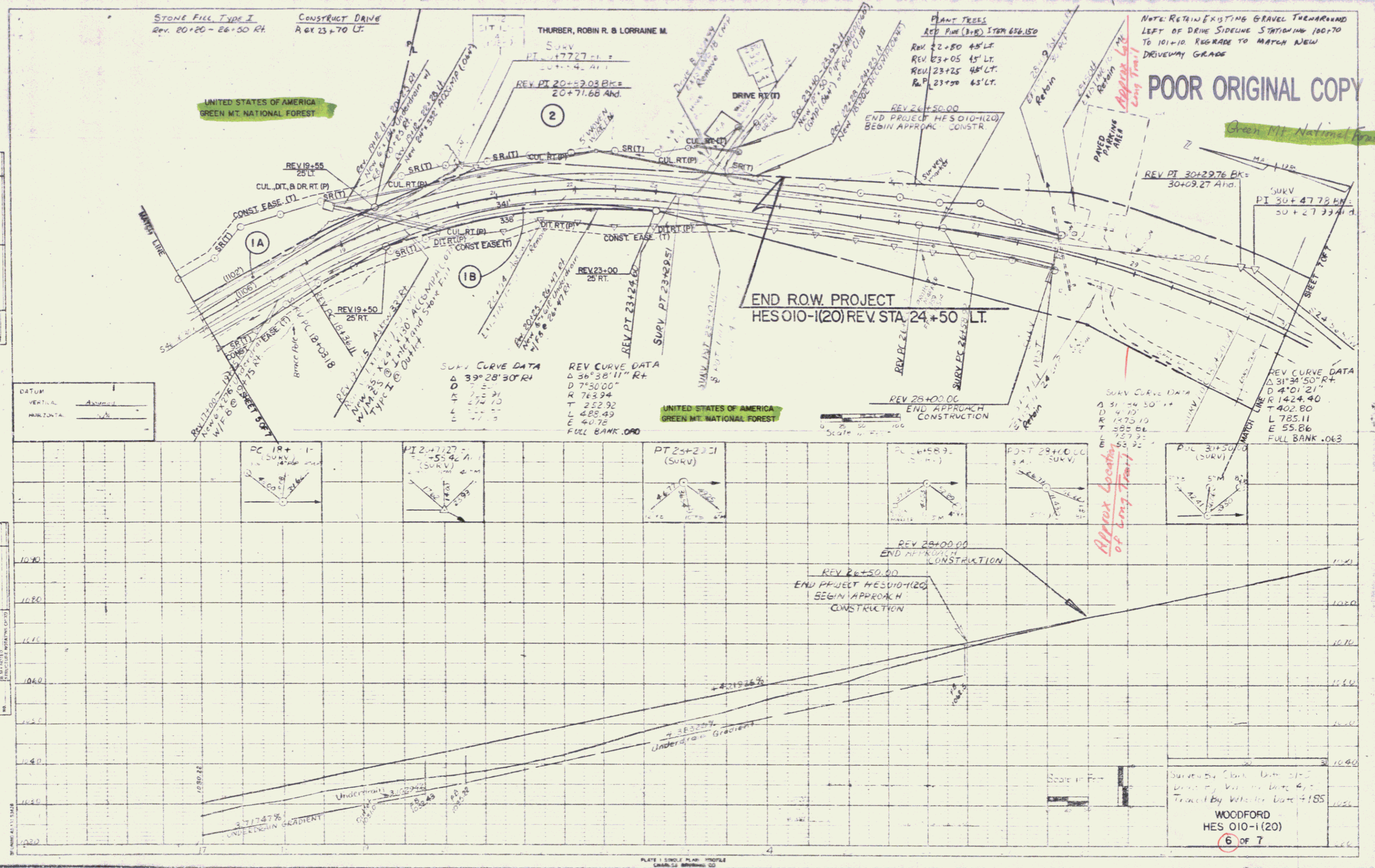
DATUM
 VERTICAL ASSUMED
 HORIZONTAL N/A



Surveyed by ...
 WOODFORD
 HES 010-1(20)
 5 of 7

PLAN
 CHECKED
 DATE
 DESIGNED
 DATE
 SURVEYED
 DATE
 DRAWN
 DATE

PROFILE
 CHECKED
 DATE
 DESIGNED
 DATE
 SURVEYED
 DATE
 DRAWN
 DATE



POOR ORIGINAL COPY

