

EXCAVATION OF SURFACES & PAVEMENTS
 TH# 48 23+00 E ~ 118+20 RT (EXIST. RT 9)
 M 122+50 E ~ 123+50 E

DRILLING & BLASTING OF SOLID ROCK SUBGRADE
 106+00 E ~ 117+50 E

REMOVE & REPLACE MAILBOX
 124+10 LT (MULTIPLE SUPPORT)
 (NEW MAILBOXES @ 124+31 LT.)

STEEL BEAM GUARDRAIL
 117+50 ~ 123+50 RT
 125+35 ~ 127+13 LT

CONSTRUCT DRIVES
 118+50 LT (12' WIDE)
 124+65 LT (30' WIDE)
 TH # 48 22+25 LT (12' WIDE)

BREAKWAY CABLE TERMINAL
 117+25 ~ 117+50 RT.
 123+50 ~ 123+75 RT.
 125+10 ~ 125+35 LT.
 127+13 ~ 127+38 LT.

SURV. CURVE DATA
 $\Delta = 1511' - 10' LT$
 $D = 7'30''$
 $R = 763.95'$
 $T = 101.84'$
 $L = 202.48'$
 $E = 6.76'$
 BANK = 0.080 FT / FT

CONSTRUCT STONE LINED DITCH
 117+50 ~ 118+26 LT.
 118+73 ~ 121+25 LT.
 126+65 ~ 130+00 LT.

CONSTRUCT PAVED DITCH
 125+70 ~ 126+55 LT.

SCARIFYING PAVEMENT
 118+00 E ~ 122+50 E

END RELINQUISHMENT NO. 1
BEGIN MAINT. AGREE. AREA NO. 1
 REV. 115+58 42' RT. LENGTH

OLSON, STEVEN M. & DIANE M.

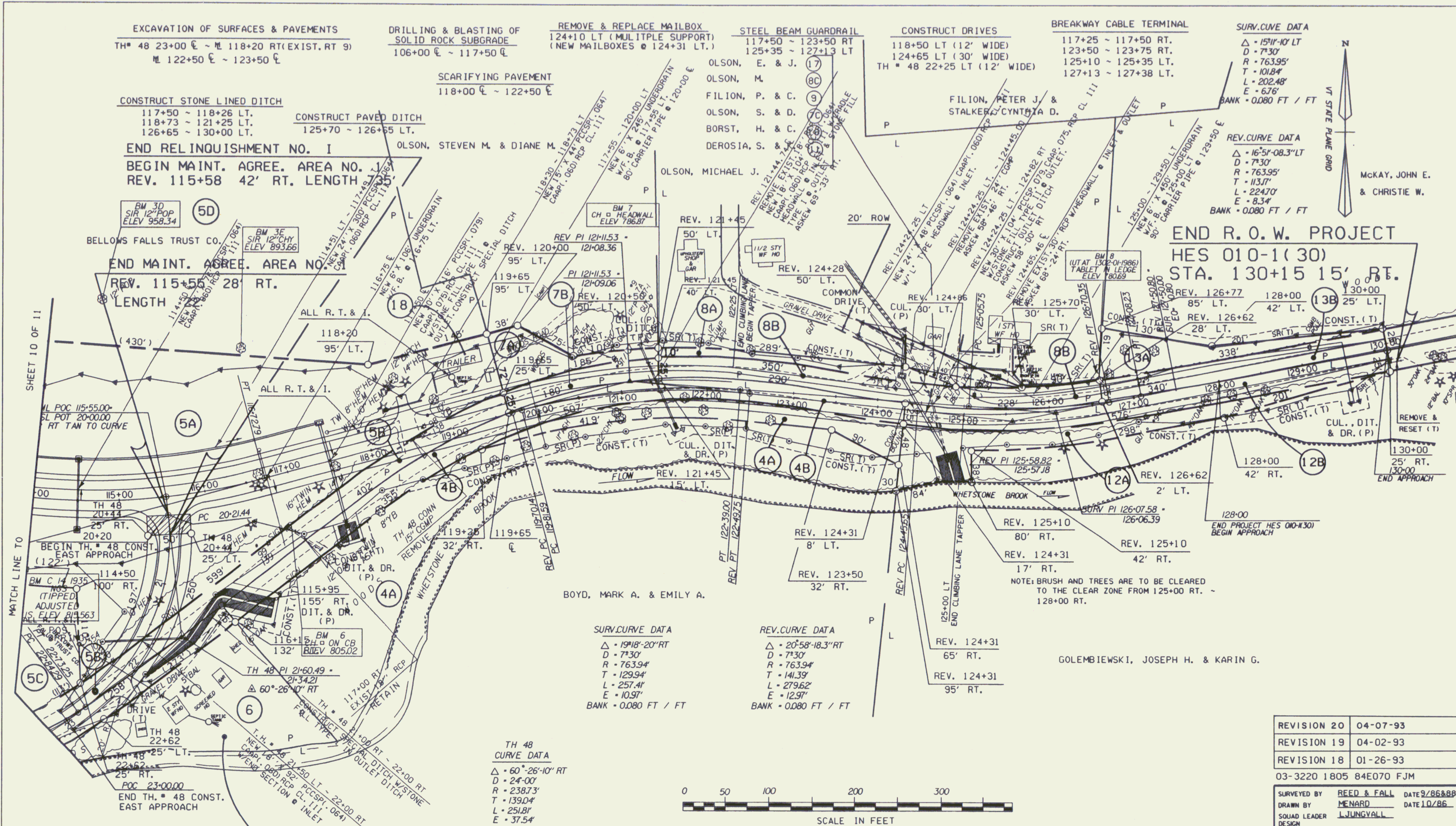
OLSON, MICHAEL J.

FILION, PETER J. & STALKER, CYNTHIA D.

REV. CURVE DATA
 $\Delta = 16'51'' - 08.3'' LT$
 $D = 7'30''$
 $R = 763.95'$
 $T = 113.71'$
 $L = 224.70'$
 $E = 8.34'$
 BANK = 0.080 FT / FT

McKAY, JOHN E. & CHRISTIE W.

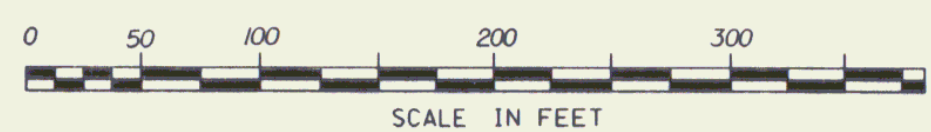
END R.O.W. PROJECT
HES 010-1(30)
STA. 130+15 15' RT.



SURV. CURVE DATA
 $\Delta = 19'18'' - 20'' RT$
 $D = 7'30''$
 $R = 763.94'$
 $T = 129.94'$
 $L = 257.41'$
 $E = 10.97'$
 BANK = 0.080 FT / FT

REV. CURVE DATA
 $\Delta = 20'58'' - 18.3'' RT$
 $D = 7'30''$
 $R = 763.94'$
 $T = 141.39'$
 $L = 279.62'$
 $E = 12.97'$
 BANK = 0.080 FT / FT

TH 48 CURVE DATA
 $\Delta = 60' - 26' - 10'' RT$
 $D = 24' - 00''$
 $R = 238.73'$
 $T = 139.04'$
 $L = 251.81'$
 $E = 37.54'$



GOLEMBIEWSKI, JOSEPH H. & KARIN G.

REVISION 20	04-07-93
REVISION 19	04-02-93
REVISION 18	01-26-93

03-3220 1805 84E070 FJM
 SURVEYED BY REED & FALL DATE 9/86 & 88
 DRAWN BY MENARD DATE 10/86
 SQUAD LEADER L JUNGVALL
 DESIGN FILE NO. /usr/zfal/070070.dwg/84e070zz.dgn
 IPARM FILE 84e070i2r DATE PLOTTED 02-APR-1993

BRATTLEBORO
HES 010-1(30)
 R.O.W. SHEET 11 OF 11

MAR 20 1996

DATUM
 VERTICAL _____
 HORIZONTAL _____

AKELEY, MARIAN D.
 BOYD, EMILY E.
 STARK, ELIZABETH A.
 DODGE, ETTA M.