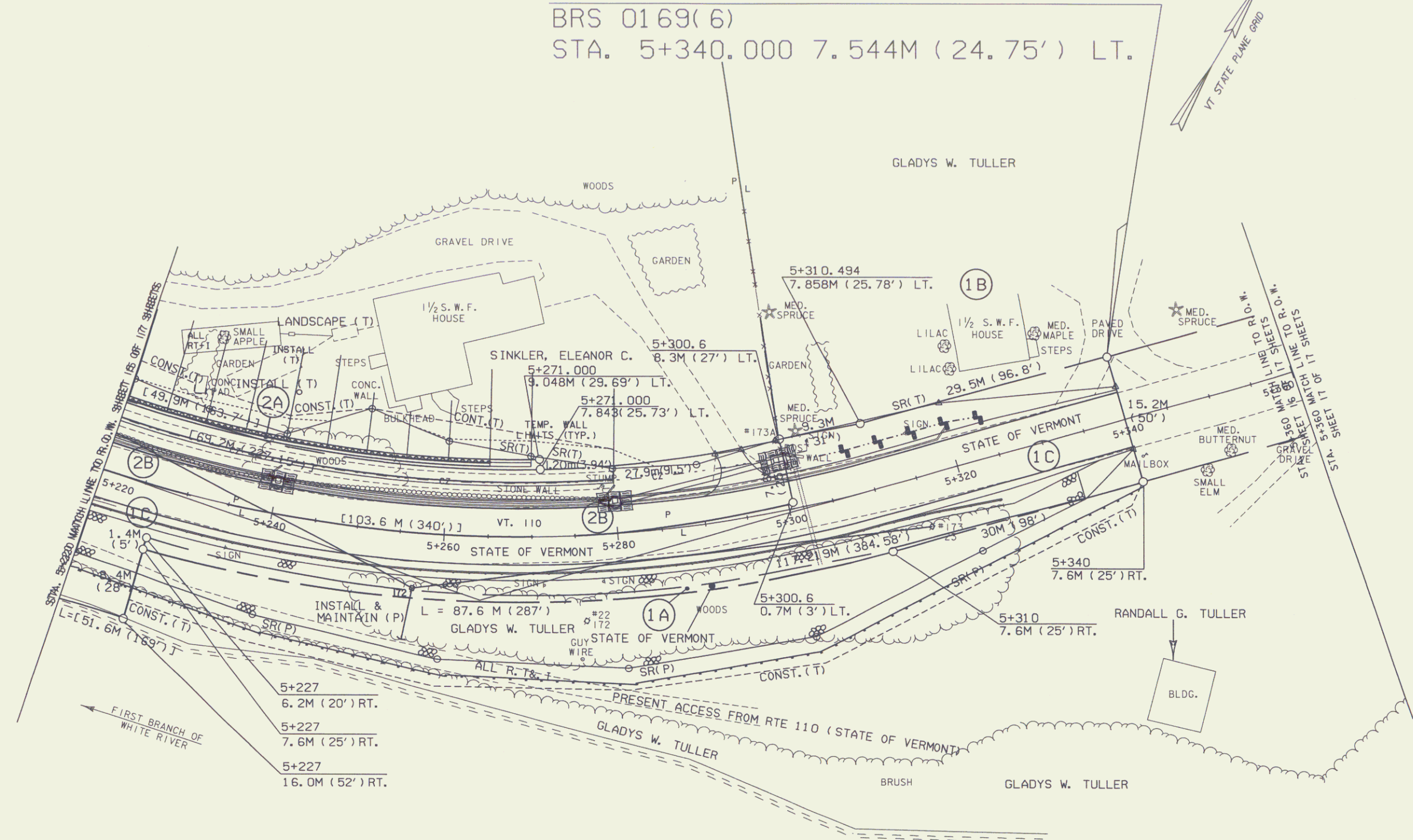
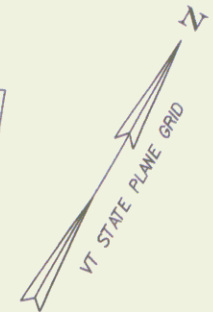
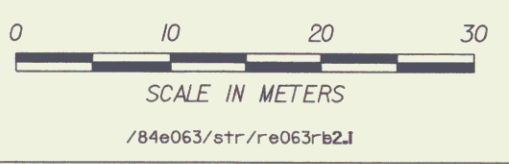


END ROW PROJECT
 BRS 0169(6)
 STA. 5+340.000 7.544M (24.75') LT.



FOR EROSION CONTROL DETAILS
 AND NEW DRAINAGE NOTES
 SEE R.O.W. SHEET 11 OF 17

LINES SHOWN ON THIS PLAN AS EXISTING
 PROPERTY LINES (P/L) ARE BELIEVED TO
 BE ACCURATE BUT SHOULD NOT BE RELIED
 UPON FOR PURPOSES UNRELATED TO THE
 STATE OF VERMONT'S ACQUISITION OF LAND
 AND RIGHTS FOR THIS PROJECT.



PROJECT NAME:	TUNBRIDGE	PLOT DATE:	30-MAR-2005
PROJECT NUMBER:	BRS 0169(6)	DRAWN BY:	L. BULLOCK
FILE NAME:	/84e063/str/ee063bdr.dgn	DESIGNED BY:	CHECKED BY:
R.O.W. SHEET:	16 OF 17 SHEETS		SHEET 24 OF 128