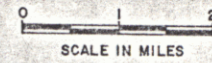


INDEX OF SHEETS

STATE OF VERMONT AGENCY OF TRANSPORTATION



PROPOSED IMPROVEMENT TOWN OF WINHALL COUNTY OF BENNINGTON VT RTE 30 (FAP)



R.O.W. PLANS

BEGINNING AT A POINT ON VT ROUTE 30 IN WINHALL APPROX. 0.455 MILES WESTERLY OF THE WINHALL-JAMAICA TOWN LINE AND EXTENDING WESTERLY FOR 0.066 MILES.

LENGTH OF ROADWAY = 192.62 FEET = 0.035 MILES
LENGTH OF BRIDGE = 167.38 FEET = 0.031 MILES
LENGTH OF PROJECT = 350.00 FEET = 0.066 MILES
LENGTH OF ROW PROJ = 425.00 FEET = 0.080 MILES
WORK UNDER THIS PROJECT INCLUDES REHABILITATION AND WIDENING OF BRIDGE NO. 43 AND RECONSTRUCTION OF ROADWAY APPROACHES.

P.in# 84E 050

MP 0.455
BEGIN R.O.W. PROJECT
BHS 015-1 (13)S REV. STA. 10+80 C

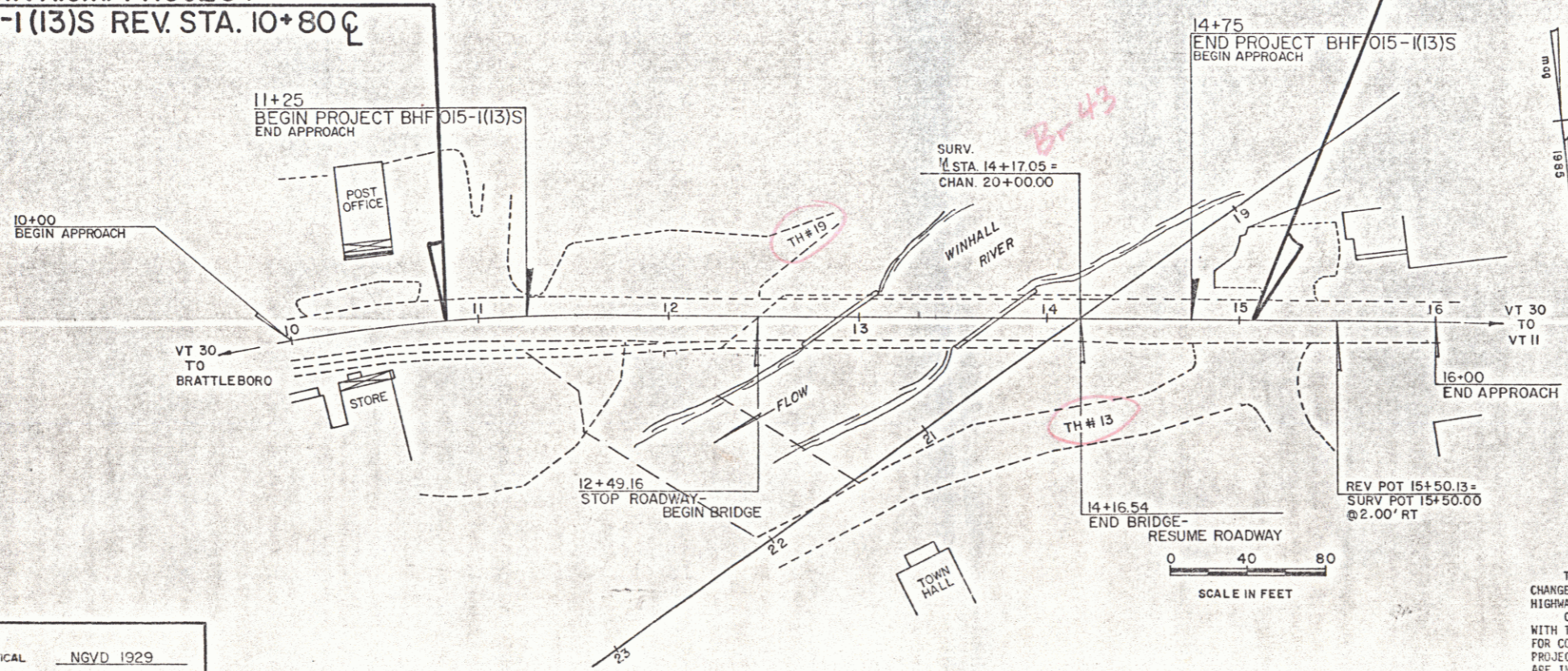
END R.O.W. PROJECT
BHS 015-1 (13)S REV. STA. 15+05 C
MP 0.521

CONVENTIONAL SIGNS

COUNTY LINE	---
TOWN LINE	- - - -
LIMITS OF ACCESS	— X —
POINT OF ACCESS	X
FENCE LINE	— X —
STONE WALL	— X —
TRAVELED RD	— X —
GUARD RAIL	— X —
RAILROAD	— X —
SURVEY LINE	— X —
CULVERT	— X —
POWER POLE	— X —
TELEPHONE POLE	— X —
TREES	— X —
CONTROL OF ACCESS	— X —
PROPERTY LINE	— X —
ROW TAKING LINE	— X —
SLOPE RIGHTS	— X —
TOP OF CUT	— X —
TOE OF SLOPE	— X —

DATUM

VERTICAL	NGVD 1929
HORIZONTAL	N/A



ALL DRIVES AS INDICATED ON PLANS ARE SUBJECT TO PERMITS PURSUANT TO TITLE 19, SECTION 43, V.S.A.

MAR 14 1989

THESE PLANS ARE SUBJECT TO SUCH ENGINEERING CHANGES AS MAY BE REQUIRED BY THE FEDERAL HIGHWAY ADMINISTRATION OR THE CHIEF ENGINEER. CONSTRUCTION IS TO BE CARRIED ON IN ACCORDANCE WITH THESE PLANS AND THE STANDARD SPECIFICATIONS FOR CONSTRUCTION DATED 1986. FOR USE ON THESE PROJECTS, INCLUDING ALL SUBSEQUENT PROVISIONS AS ARE INCORPORATED IN THESE PLANS.

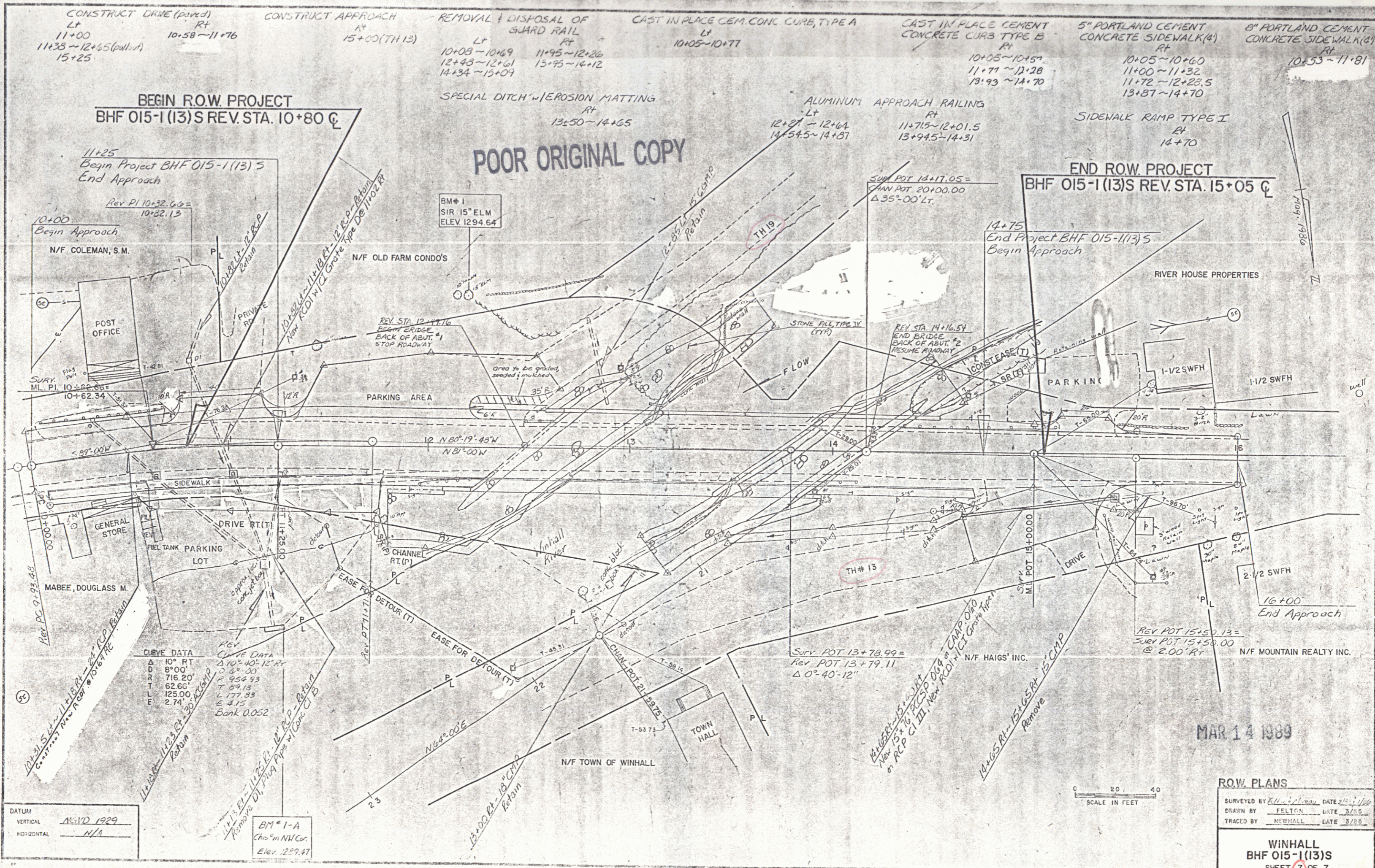
PROJECT PROCESSED UNDER
SECONDARY ROAD PLAN

SUBMITTED BY ORDER OF THE STATE TRANSPORTATION BOARD
APPROVED *[Signature]* DATE 6/9/88
CHIEF ENGINEER

APPROVED *[Signature]* DATE 11/81
ACTING CHIEF, PROPERTY ADMINISTRATION

WINHALL
BHF 015-1(13)S
SHEET 1 OF 7

D-10 SRS 12/17/70



MAR 14 1989

SCALE IN FEET
 0 20 40

ROW PLANS
 SURVEYED BY *K.L. Felton* DATE 2/25/88
 DRAWN BY FELTON DATE 3/1/88
 TRACED BY NEWHALL DATE 3/8/88

WINHALL
 BHF 015-1(13)S
 SHEET 7 OF 7