

BREAKAWAY CABLE TERMINAL
31+26 ~ 31+51, RT

GUARD RAIL APPROACH
SECTION - TYPE II
23+41.5 ~ 23+54, RT
24+23 ~ 24+35.5, LT
25+38.5 ~ 25+51, RT
27+75 ~ 27+87.5, LT

REMOVAL AND DISPOSAL
OF EXISTING GUARD RAIL
25+20 ~ 29+40, RT
25+70, RT ~ 29+35, LT
33+55 ~ 35+50, LT

STEEL BEAM GUARD RAIL
23+00 ~ 23+41.5, RT
23+00 ~ 24+23, LT
25+51 ~ 31+28, RT
27+87.5 ~ 32+38, LT
32+58 ~ 35+50, LT

U.S. ROUTE 7
C CONST.
Δ = 68'-20"-32' LT.
D = 6'-45'-00"
R = 848.83'
T = 576.24'
L = 1012.48'
E = 177.11'
BANK = .06 FT/FT

TREATED TIMBER CURB
27+75 ~ 31+90

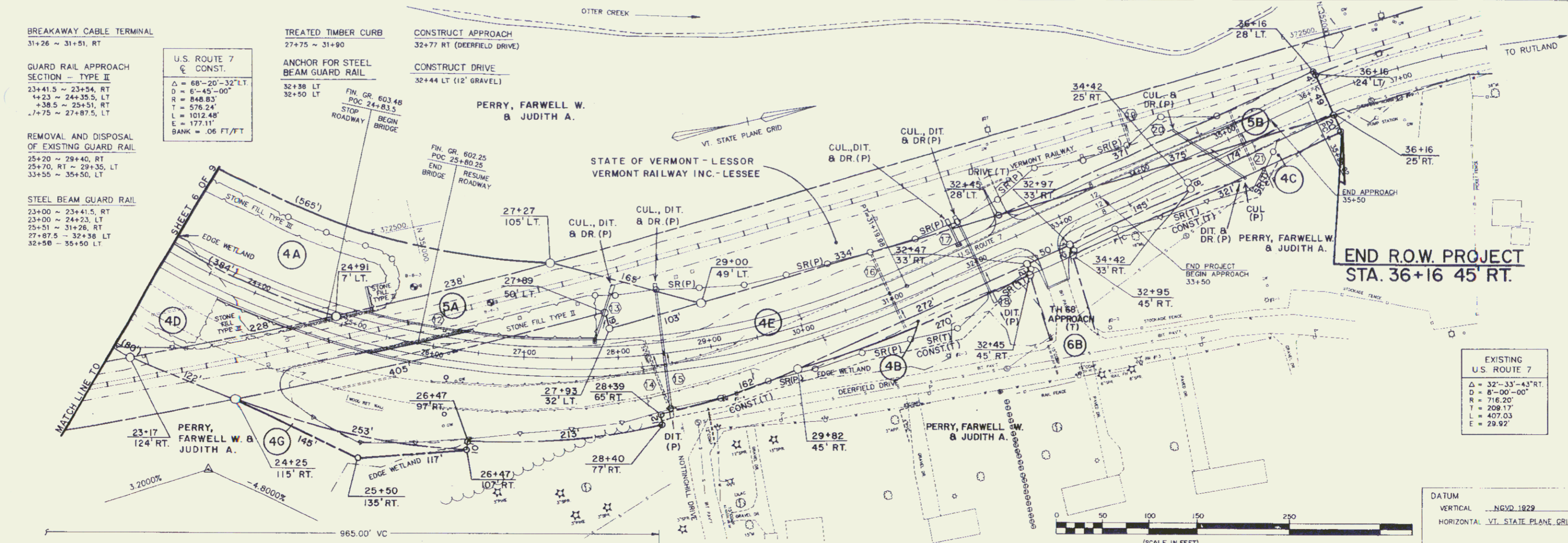
ANCHOR FOR STEEL
BEAM GUARD RAIL
32+38 LT
32+50 LT

CONSTRUCT APPROACH
32+77 RT (DEERFIELD DRIVE)

CONSTRUCT DRIVE
32+44 LT (12' GRAVEL)

PERRY, FARWELL W.
& JUDITH A.

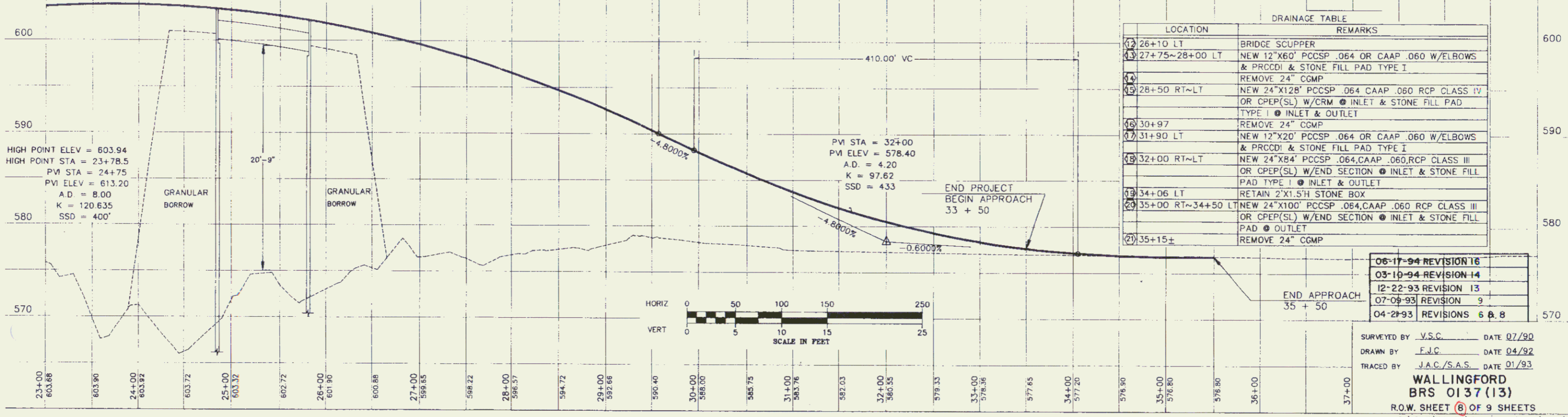
STATE OF VERMONT - LESSOR
VERMONT RAILWAY INC. - LESSEE



END R.O.W. PROJECT
STA. 36+16 45' RT.

EXISTING
U.S. ROUTE 7
Δ = 32'-33'-43' RT.
D = 8'-00'-00"
R = 716.20'
T = 209.17'
L = 407.03'
E = 29.92'

DATUM
VERTICAL ...NGVD 1829
HORIZONTAL VT. STATE PLANE GRID



LOCATION	REMARKS
12 26+10 LT	BRIDGE SCUPPER
13 27+75~28+00 LT	NEW 12"X60" PCCSP .064 OR CAAP .060 W/ELBOWS & PRCCDI & STONE FILL PAD TYPE I
14	REMOVE 24" CGMP
15 28+50 RT~LT	NEW 24"X128" PCCSP .064 CAAP .060 RCP CLASS IV OR CPEP(SL) W/CRM INLET & STONE FILL PAD TYPE I INLET & OUTLET
16 30+97	REMOVE 24" CGMP
17 31+90 LT	NEW 12"X20" PCCSP .064 OR CAAP .060 W/ELBOWS & PRCCDI & STONE FILL PAD TYPE I
18 32+00 RT~LT	NEW 24"X84" PCCSP .064, CAAP .060, RCP CLASS III OR CPEP(SL) W/END SECTION INLET & STONE FILL PAD TYPE I INLET & OUTLET
19 34+06 LT	RETAIN 2'X1.5' SH STONE BOX
20 35+00 RT~34+50 LT	NEW 24"X100" PCCSP .064, CAAP .060 RCP CLASS III OR CPEP(SL) W/END SECTION INLET & STONE FILL PAD OUTLET
21 35+15+	REMOVE 24" CGMP

06-17-94 REVISION 16
03-19-94 REVISION 14
12-22-93 REVISION 13
07-09-93 REVISION 9
04-27-93 REVISIONS 6 & 8

SURVEYED BY V.S.C. DATE 07/90
DRAWN BY F.J.C. DATE 04/92
TRACED BY J.A.C./S.A.S. DATE 01/93

WALLINGFORD
BRS 0137 (13)
R.O.W. SHEET 6 OF 9 SHEETS

D:\CIVL\WALLY\91120-12.DWG (1=50)