

BREAKAWAY CABLE TERMINAL
12+50 ~ 12+75, RT
17+74 ~ 17+99, LT

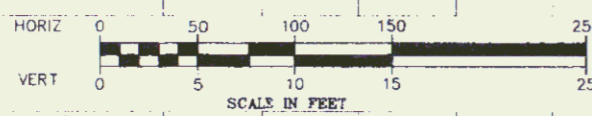
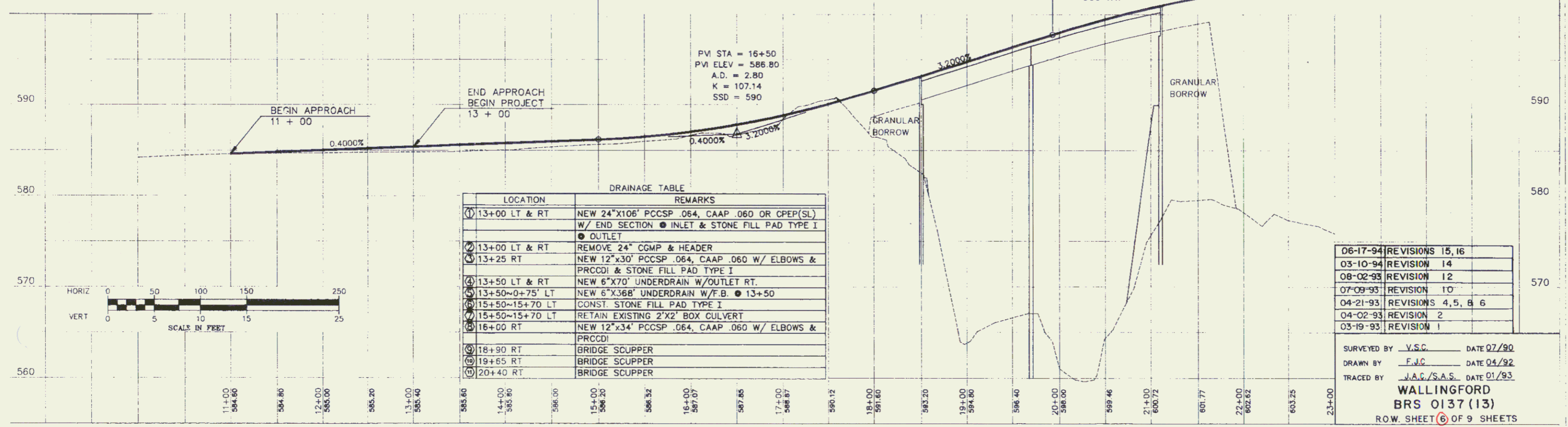
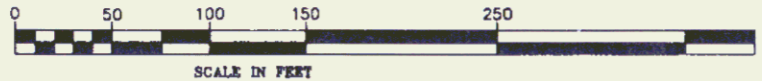
BARBED WIRE FENCE
11+00 ~ 14+10, LT

RD RAIL APPROACH SECTION - TYPE II
18+12.5 ~ 18+25, RT
18+36.5 ~ 18+49, LT
21+10.5 ~ 21+23, RT
21+10.5 ~ 21+23, LT

REMOVAL AND DISPOSAL OF EXISTING GUARD RAIL
18+72 ~ 18+17, RT
17+40 ~ 18+36.5, LT
21+09 ~ 23+00, RT
21+09 ~ 23+00, RT

STEEL BEAM GUARD RAIL
12+75 ~ 18+12.5, RT
17+40 ~ 18+36.5, LT
21+23 ~ 23+00, RT
21+23 ~ 23+00, LT

VERTICAL NGVD 1929
HORIZONTAL VT. STATE PLANE GRID



DRAINAGE TABLE

LOCATION	REMARKS
① 13+00 LT & RT	NEW 24"x106" PCCSP .064, CAAP .060 OR CPEP(SL) W/ END SECTION ● INLET & STONE FILL PAD TYPE I ● OUTLET
② 13+00 LT & RT	REMOVE 24" CGMP & HEADER
③ 13+25 RT	NEW 12"x30" PCCSP .064, CAAP .060 W/ ELBOWS & PRCCDI & STONE FILL PAD TYPE I
④ 13+50 LT & RT	NEW 6"x70" UNDERDRAIN W/OUTLET RT.
⑤ 13+50-0+75' LT	NEW 6"x368" UNDERDRAIN W/F.B. ● 13+50
⑥ 15+50-15+70 LT	CONST. STONE FILL PAD TYPE I
⑦ 15+50-15+70 LT	RETAIN EXISTING 2'X2' BOX CULVERT
⑧ 16+00 RT	NEW 12"x34" PCCSP .064, CAAP .060 W/ ELBOWS & PRCCDI
⑨ 18+90 RT	BRIDGE SCUPPER
⑩ 19+65 RT	BRIDGE SCUPPER
⑪ 20+40 RT	BRIDGE SCUPPER