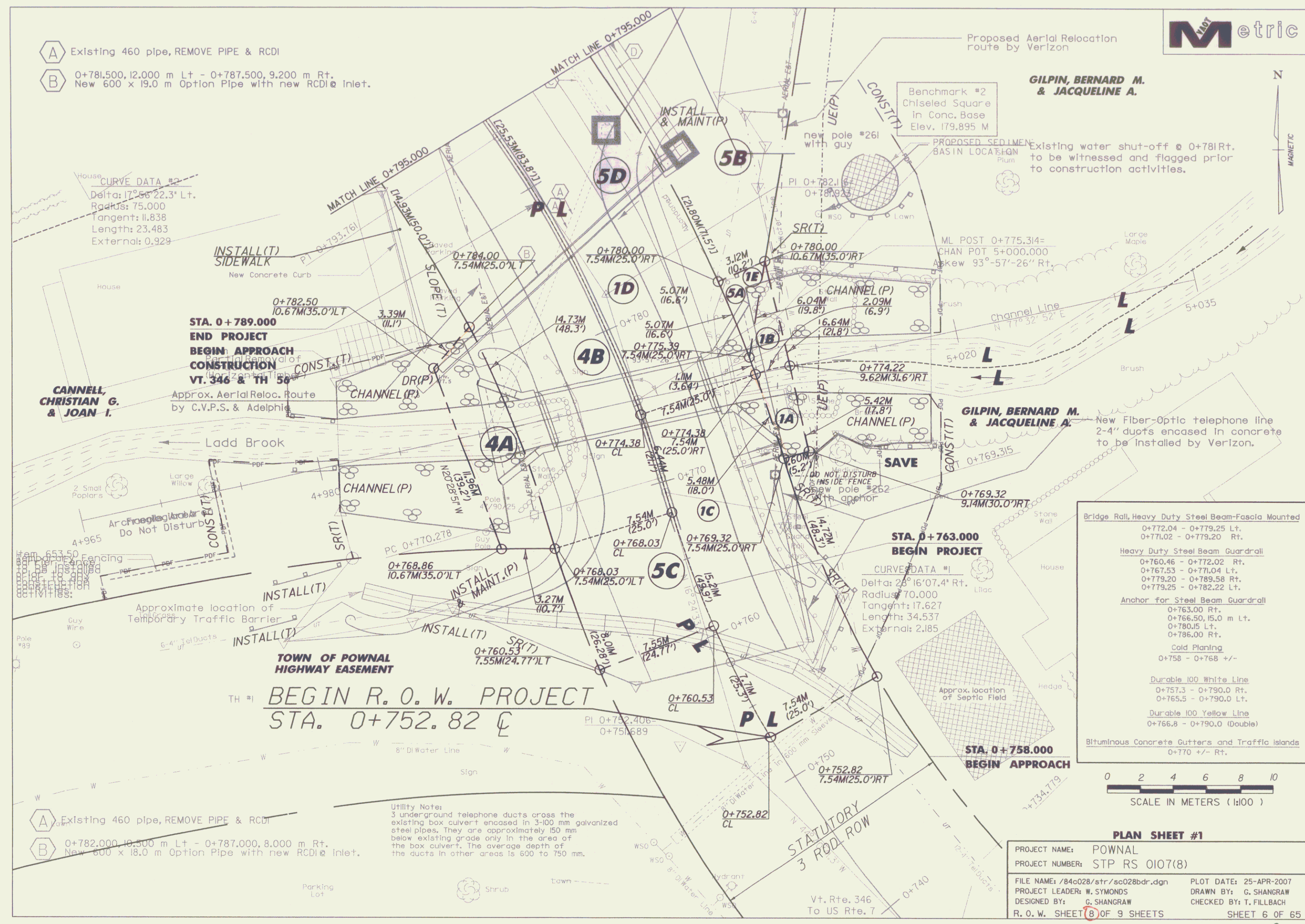


- (A) Existing 460 pipe, REMOVE PIPE & RCDI
- (B) 0+781,500, 12,000 m Lt - 0+787,500, 9,200 m Rt.
New 600 x 19.0 m Option Pipe with new RCDI Inlet.



GILPIN, BERNARD M. & JACQUELINE A.



Bridge Rail, Heavy Duty Steel Beam-Fascia Mounted	0+772.04 - 0+779.25 Lt. 0+771.02 - 0+779.20 Rt.
Heavy Duty Steel Beam Guardrail	0+760.46 - 0+772.02 Rt. 0+767.53 - 0+771.04 Lt. 0+773.20 - 0+789.58 Rt. 0+779.25 - 0+782.22 Lt.
Anchor for Steel Beam Guardrail	0+763.00 Rt. 0+766.50, 15.0 m Lt. 0+780.05 Lt. 0+786.00 Rt.
Cold Planing	0+758 - 0+768 +/-
Durable 100 White Line	0+757.3 - 0+790.0 Rt. 0+765.5 - 0+790.0 Lt.
Durable 100 Yellow Line	0+766.8 - 0+790.0 (Double)
Bituminous Concrete Gutters and Traffic Islands	0+770 +/- Rt.



PLAN SHEET #1

PROJECT NAME: POWNAL
 PROJECT NUMBER: STP RS 0107(8)
 FILE NAME: /84c028/str/sc028bdr.dgn
 PROJECT LEADER: W. SYMONDS
 DESIGNED BY: G. SHANGRAW
 R. O. W. SHEET 8 OF 9 SHEETS

PLOT DATE: 25-APR-2007
 DRAWN BY: G. SHANGRAW
 CHECKED BY: T. FILLBACH
 SHEET 6 OF 65