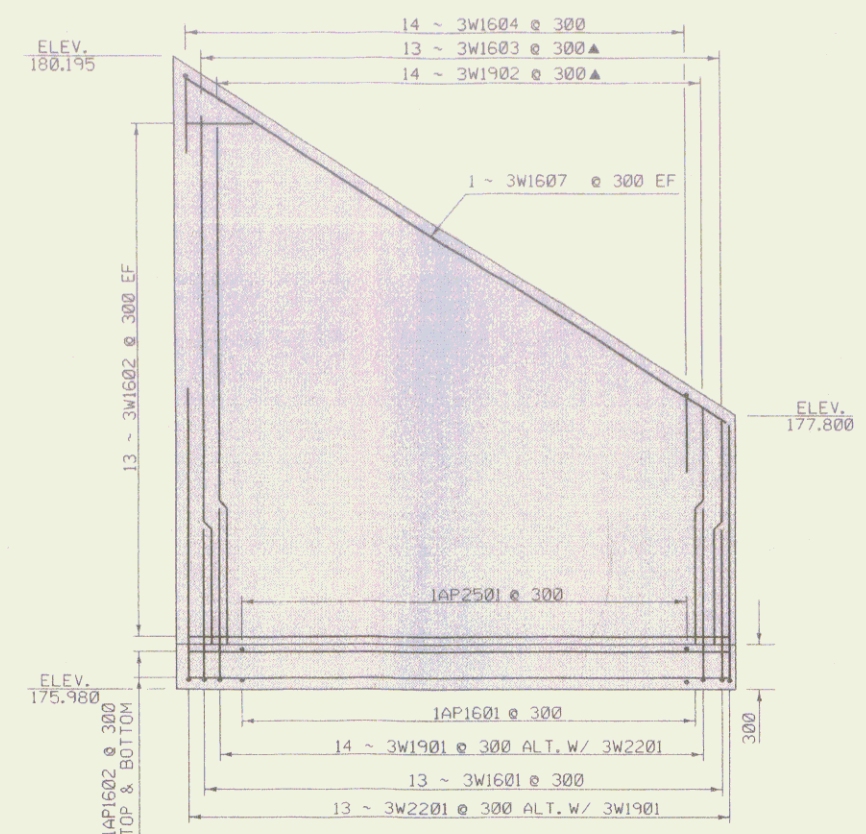
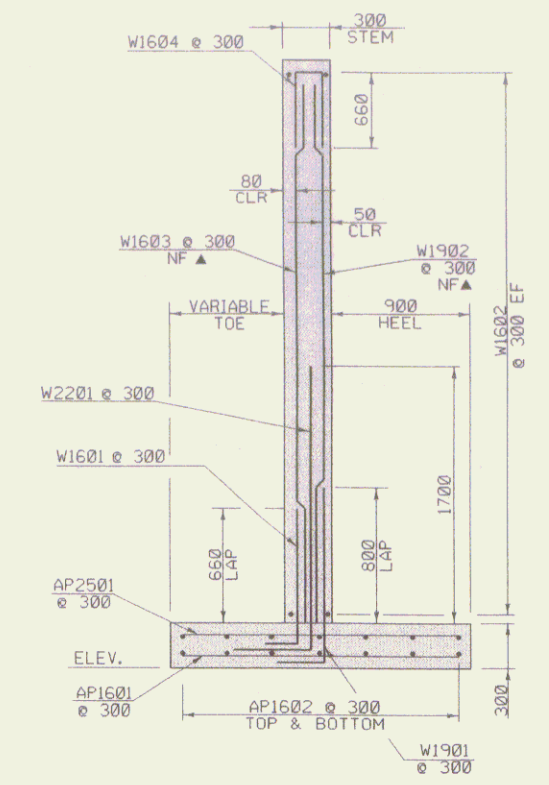


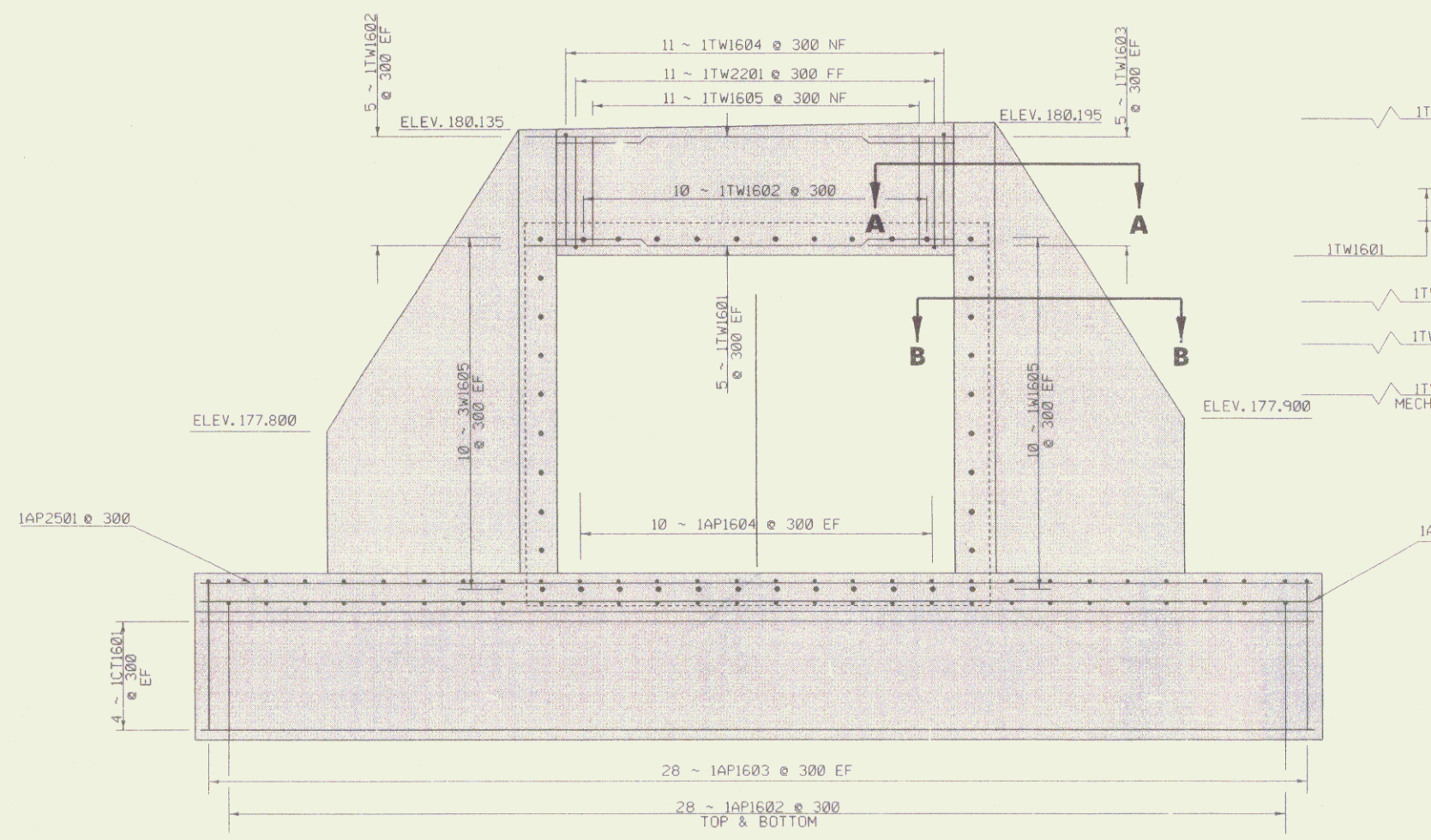
ELEVATION WINGWALL 3



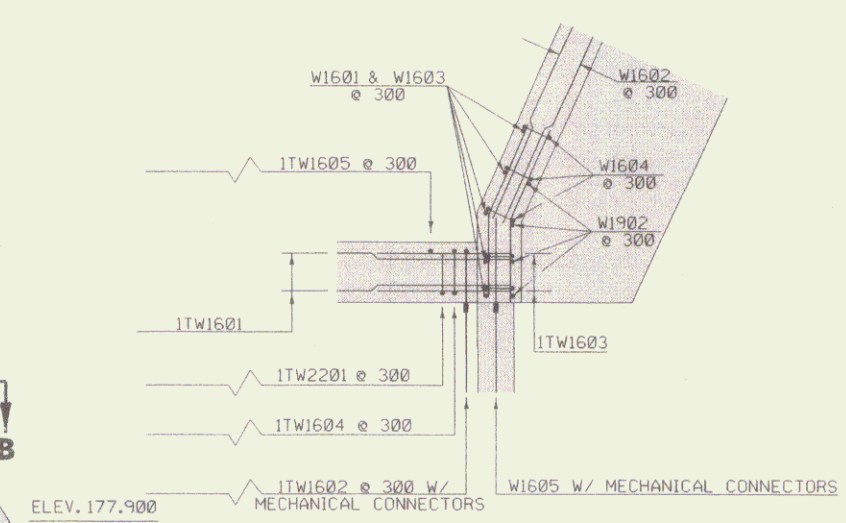
ELEVATION WINGWALL 1



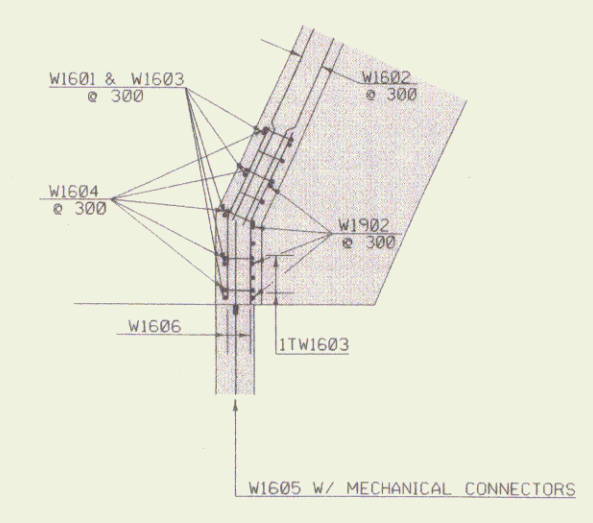
TYPICAL WINGWALL SECTION



ELEVATION HEADWALL 1 (OUTLET)



SECTION A-A



SECTION B-B

ELEVATIONS WW1 & WW3

STATE OF VERMONT
AGENCY OF TRANSPORTATION

Town Of	POWNAI	Bridge No.	/
Highway No.	VT 346	Log Sta.	
		Surv. Sta.	
WINGWALL DETAILS			
VT 346 OVER LADD BROOK			
Designed By	B. W. DUST	Drawn By	R. PELLET
Checked By		Bridge Design Supervisor	C. KELLER
PROJECT		PROJECT NO.	STP RS 017081
		LOG. Info.	v:\oad_cadd\11\ngcob\hett\84028\Structures\sc028ww.dgn sc028ww1
Bridge Sheet No.	ROW SHEET	6	OF 9 SHEETS

NOTE:
*16 REINFORCING STEEL MECHANICAL SPLICERS AT 300 SHALL BE CAST INTO THE PRECAST BOX AND SHALL BE CAPABLE OF EXCEEDING 150% F_y OF THE *16 BAR. THE SPLICERS AND THE *16 THREADED DOWELS SHALL BE SUPPLIED BY THE MANUFACTURER OF THE PRECAST BOX AND SHALL BE INCLUDED IN THE UNIT BID PRICE FOR ITEM 540.10 "PRECAST CONCRETE BOX (MODIFIED)"

