

RELOCATE MAILBOX, SINGLE SUPPORT
REV. 475-05 LT.

RELOCATE MAILBOX, MULTIPLE SUPPORT
REV. 476-05 RT (3 MAILBOXES)*

* THESE MAILBOXES MAY BE INSTALLED
ON THREE SEPARATE POSTS, OR TWO
ON ONE AND ONE ON ANOTHER, AS
LONG AS THE INSTALLATION IS IN
ACCORDANCE WITH SHEET 13.

STEEL BEAM GUARD RAIL
REV. 477-37.5 ~ REV. 485-00 RT.
REV. 476-00 ~ REV. 479-35 LT.
REV. 479-87.5 ~ REV. 485-00 LT.

REMOVAL AND DISPOSAL
OF GUARD RAIL
REV. 479-70 ~ REV. 485-00 RT.

STONE FILL TYPE II
(FOR SLOPE PROTECTION)
REV. 476-00 LT. ~ REV. 479-10 LT.
TH 75 SOUTH 52-00 RT. ~ REV. 485-00 LT.

CHAIN-LINK FENCE, 6 FEET
REV. 480-00 LT. ~ REV. 480-00 LT.
REV. 482-50 LT. ~ REV. 485-00 LT.

NOISE BARRIER (MODIFIED)
REV. 476-30 ~ REV. 479-00 LT.
REV. 481-00 ~ REV. 482-50 LT.
(See Sheet for Details)

REV. 476-50
END APPR. CONST.
BEGIN PROJ. F 015-116

BIN WALL
REV. 477-60 ~ REV. 478-80 LT.
REV. 480-70 ~ REV. 482-10 LT.
REV. 484-70 ~ REV. 485-00 LT.

T.H.75 SOUTH
SURV. CURVE DATA
Δ = 56° 04' 42" LT.
D = 228' 55' 10"
R = 25.03
T = 13.33
L = 24.50
E = 3.33
2T-L = 2.16

T.H.75 SOUTH
REV. CURVE DATA
Δ = 56° 04' 42" LT.
D = 184' 49' 30.58"
R = 31.00
T = 16.51
L = 30.34
E = 4.12
2T-L = 2.68

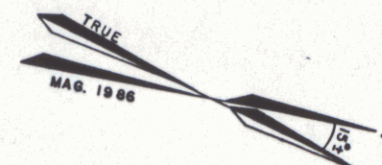
SCARIFYING PAVEMENT
REV. 482-00 ~ REV. 485-00

TREATED TIMBER CURB
REV. 479-25 ~ REV. 485-00 RT.

CONSTRUCT APPROACH
REV. 479-59.50 LT. (T.H.75 SOUTH)

EXCAVATION OF SURFACES AND PAVEMENTS
(AREA TO BE SEEDED AND MULCHED)
REV. 481-00 ~ REV. 485-00 RT. P

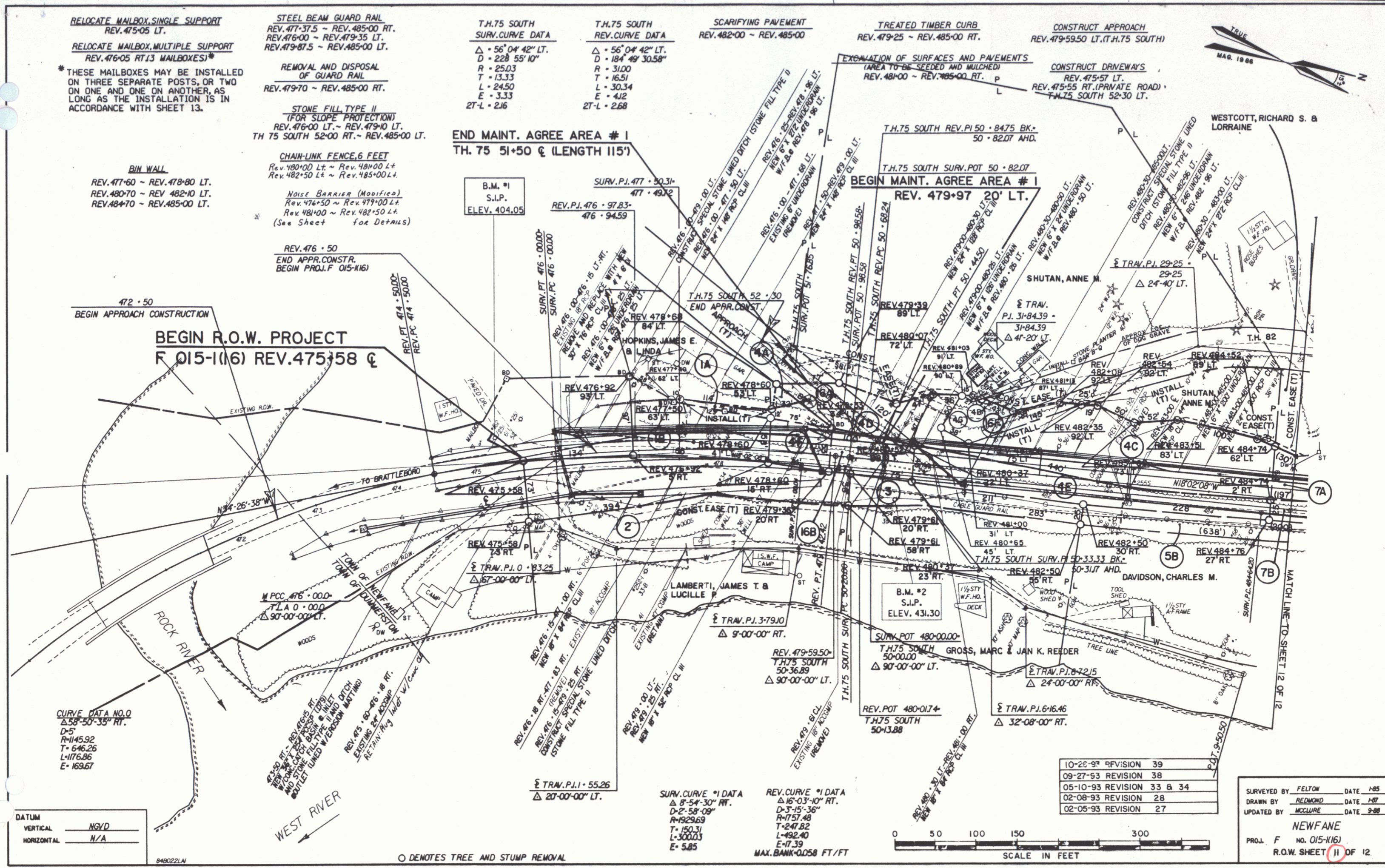
CONSTRUCT DRIVEWAYS
REV. 475-57 LT.
REV. 475-55 RT. (PRIVATE ROAD)
T.H.75 SOUTH 52-30 LT.



END MAINT. AGREE AREA # 1
TH. 75 51+50 & (LENGTH 115')

BEGIN MAINT. AGREE AREA # 1
REV. 479+97 20' LT.

472+50
BEGIN APPROACH CONSTRUCTION
**BEGIN R.O.W. PROJECT
F 015-116 REV. 475+58 &**



CURVE DATA NO. 0
Δ 53° 50' 38" RT.
D=5
R=145.92
T=646.26
L=1176.86
E=169.67

DATUM
VERTICAL NGVD
HORIZONTAL N/A

SURV. CURVE #1 DATA
Δ 8° 54' 30" RT.
D=2° 58' 09"
R=1929.69
T=150.31
L=3000.3
E=3.85

REV. CURVE #1 DATA
Δ 16° 03' 10" RT.
D=3° 15' 36"
R=1757.48
T=247.82
L=492.40
E=7.39
MAX. BANK=0.058 FT/FT

10-26-93	REVISION	39
09-27-93	REVISION	38
05-10-93	REVISION	33 & 34
02-08-93	REVISION	28
02-05-93	REVISION	27

SURVEYED BY FELTON DATE 1-85
DRAWN BY REDMOND DATE 1-87
UPDATED BY MCCLURE DATE 9-88
NEWFANE
PROJ. F NO. 015-116
R.O.W. SHEET 11 OF 12



○ DENOTES TREE AND STUMP REMOVAL