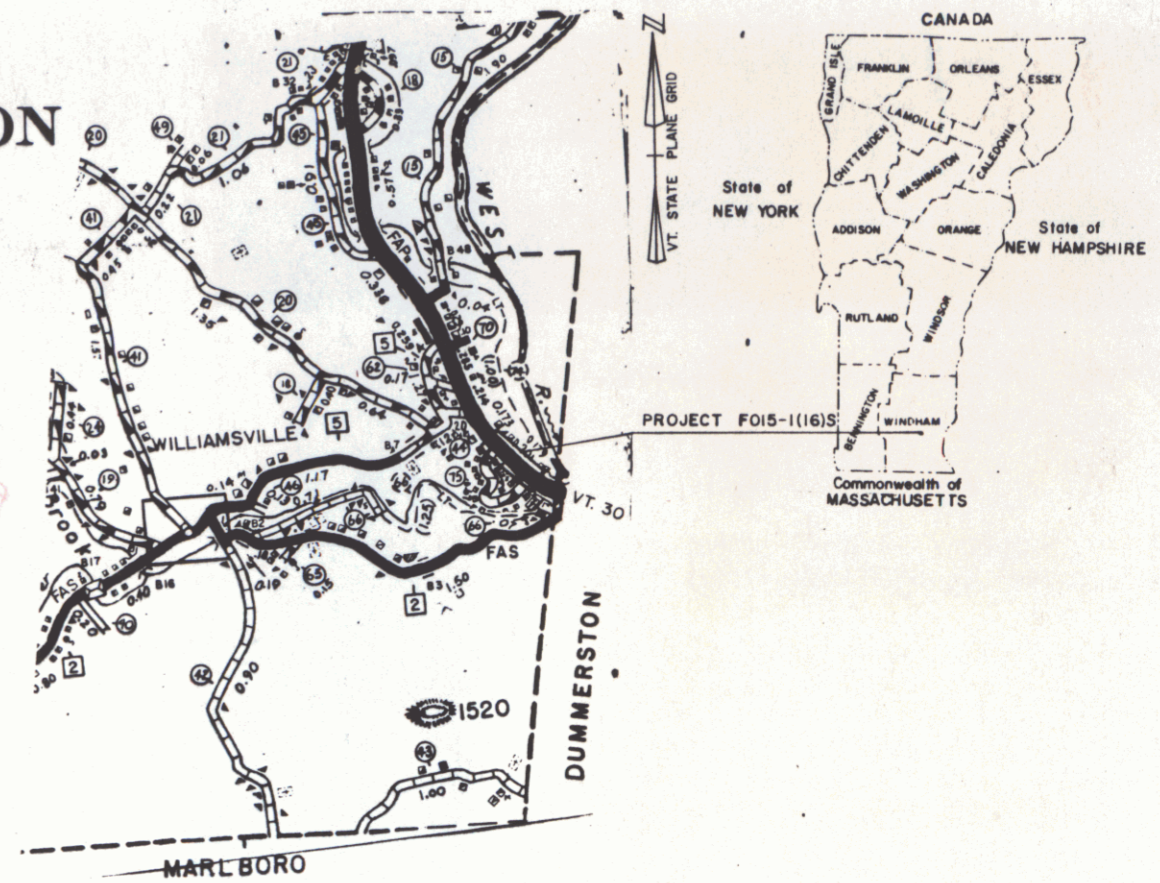


STATE OF VERMONT
AGENCY OF TRANSPORTATION



PROPOSED IMPROVEMENT
TOWN OF NEWFANE
COUNTY OF WINDHAM
VT. ROUTE 30 (F.A.P)

BEGINNING AT A POINT 0.070 MILES NORTHERLY OF THE DUMMERSTON - NEWFANE TOWN LINE AND EXTENDING NORTHERLY 0.387 MILES.
LENGTH OF ROADWAY 2045.08 FT. = 0.387 MILES
LENGTH OF PROJECT 2045.08 FT. = 0.387 MILES
THIS PROJECT CONSISTS OF RECONSTRUCTING A PORTION OF VERMONT ROUTE 30 ON MINOR RELOCATION WITH IMPROVED GRADING AND DRAINAGE.
LENGTH OF R.O.W. PROJECT 2195.08 FT. = 0.416 MILES



R.O.W. PLANS

BEGIN R.O.W. PROJECT
F 015-1 (16) STA. 475+58 ±

MP 0.06

BEGIN MAINT. AGREE AREA #1
REV. 479+97 20' LT.

END MAINT. AGREE. AREA #1
TH. 75 51+50 ± (LENGTH 115')

BEGIN MAINT. AGREE AREA # 2
REV. 490+98 20' LT.

END MAINT. AGREE. AREA # 2
TH. 75 60+42 ± (LENGTH 22')

RIGHT-OF-WAY DIVISION
TOWN FILE

PERPETUAL
Town of NEWFANE
(To Be Returned To R.O.W. Division)

Vt. Rte 30
MM0.00 to 0.487

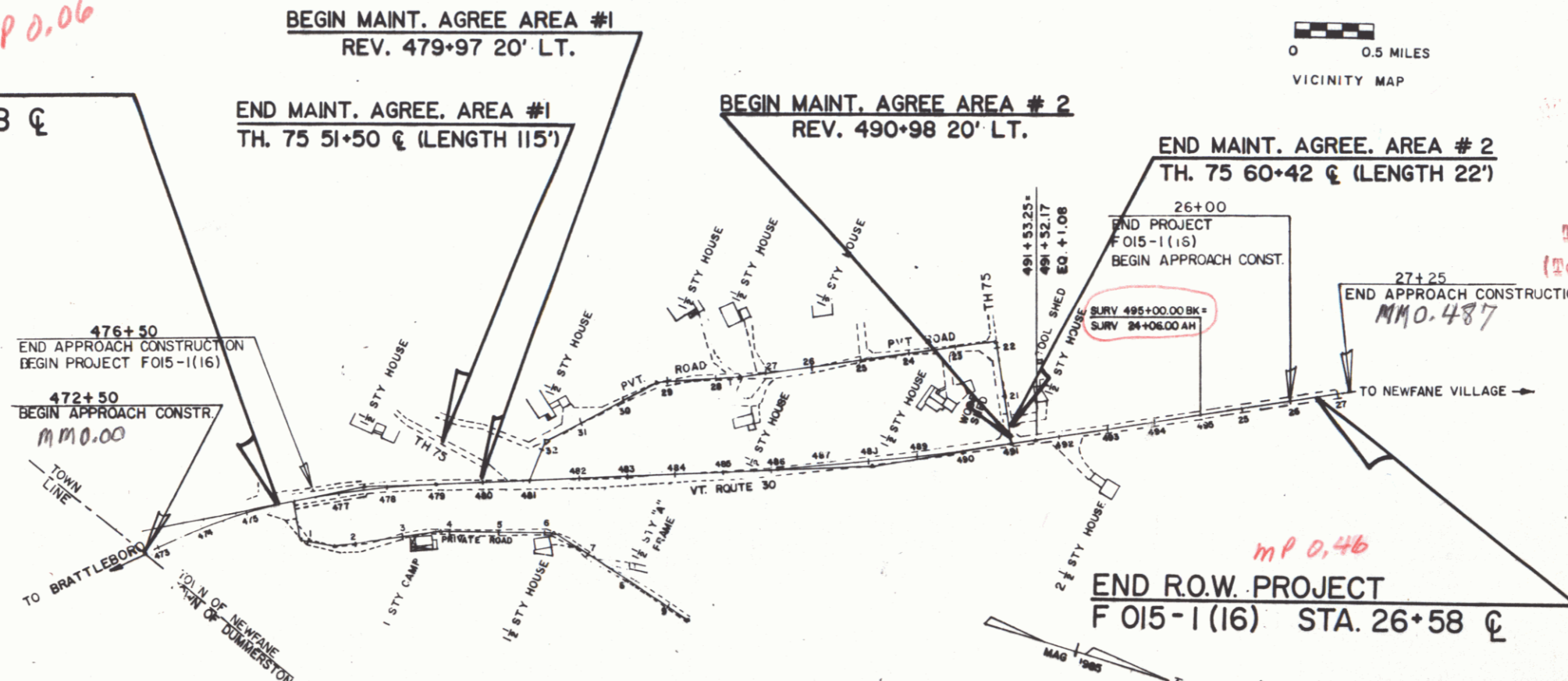
ALL DRIVES AS INDICATED ON PLANS
ARE SUBJECT TO PERMITS PURSUANT
TO TITLE 19 SECTION III, V.S.A.

CONVENTIONAL SIGNS

COUNTY LINE	---
TOWN LINE	- - - -
LIMITS OF ACCESS	○
POINT OF ACCESS	X
FENCE LINE	— · — · —
STONE WALL	— · — · — · —
TRAVELED WAY	— · — · — · — · —
GUARD RAIL	— · — · — · — · — · —
RAILROAD	— · — · — · — · — · — · —
SURVEY LINE	— · — · — · — · — · — · — · —
CULVERT	— · — · — · — · — · — · — · — · —
POWER POLE	— · — · — · — · — · — · — · — · — · —
TELEPHONE POLE	— · — · — · — · — · — · — · — · — · —
TREES	○
CONTROL OF ACCESS	///
PROPERTY LINE	— · — · — · — · — · — · — · —
TOW TAKING LINE	— · — · — · — · — · — · — · —
SLOPE RIGHTS	○ SR
TOP OF CUT	△
TOE OF SLOPE	○

DATUM

VERTICAL	NGVD 1929
HORIZONTAL	NA



MP 0.46
END R.O.W. PROJECT
F 015-1 (16) STA. 26+58 ±

THESE PLANS ARE SUBJECT TO SUCH ENGINEERING CHANGES AS MAY BE REQUIRED BY THE FEDERAL HIGHWAY ADMINISTRATION OR THE SECRETARY OF TRANSPORTATION. CONSTRUCTION IS TO BE CARRIED ON IN ACCORDANCE WITH THESE PLANS AND THE STANDARD SPECIFICATIONS FOR CONSTRUCTION DATED 1986, AS APPROVED BY THE FEDERAL HIGHWAY ADMINISTRATION ON NOVEMBER 21, 1985 FOR USE ON THIS PROJECT, INCLUDING ALL SUBSEQUENT REVISIONS AND SUCH REVISED SPECIFICATIONS AND SPECIAL PROVISIONS AS ARE INCORPORATED IN THESE PLANS.

PROJECT PROCESSED UNDER
SECONDARY ROAD PLAN

APPROVED: <i>Arthur Ross</i>	DATE: 31 July 89
Director of Planning	
P.# 843 022	
APPROVED: <i>[Signature]</i>	DATE: 7 27 89
Chief, Property Administration	
NEWFANE	
STP F 015-1(16)	
R.O.W. SHEET 1 OF 12	

D-10 SRS 12/17/70

DEC 2 1996