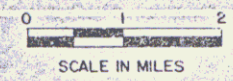
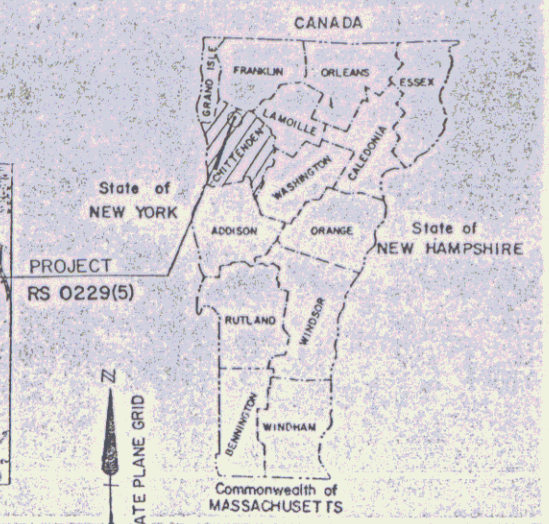
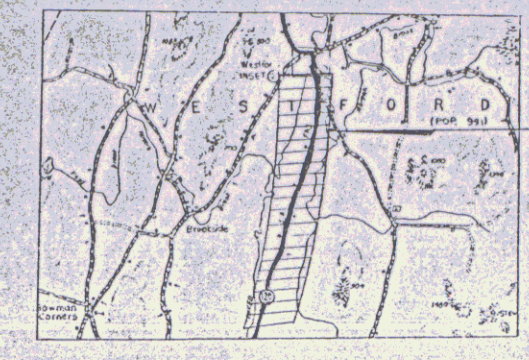


POOR ORIGINAL COPY

STATE OF VERMONT AGENCY OF TRANSPORTATION



PROPOSED IMPROVEMENT TOWN OF WESTFORD COUNTY OF CHITTENDEN VT. RTE. 128 (E.A.S.)



R.O.W. PLANS

BEGINNING IN THE TOWN OF WESTFORD AT A POINT ON VT. RTE. 128 WHICH IS LOCATED APPROXIMATELY 1.278 MILES NORTHERLY OF THE WESTFORD-ESSEX TOWN LINE AND EXTENDING NORTHERLY FOR APPROXIMATELY 2.329 MILES

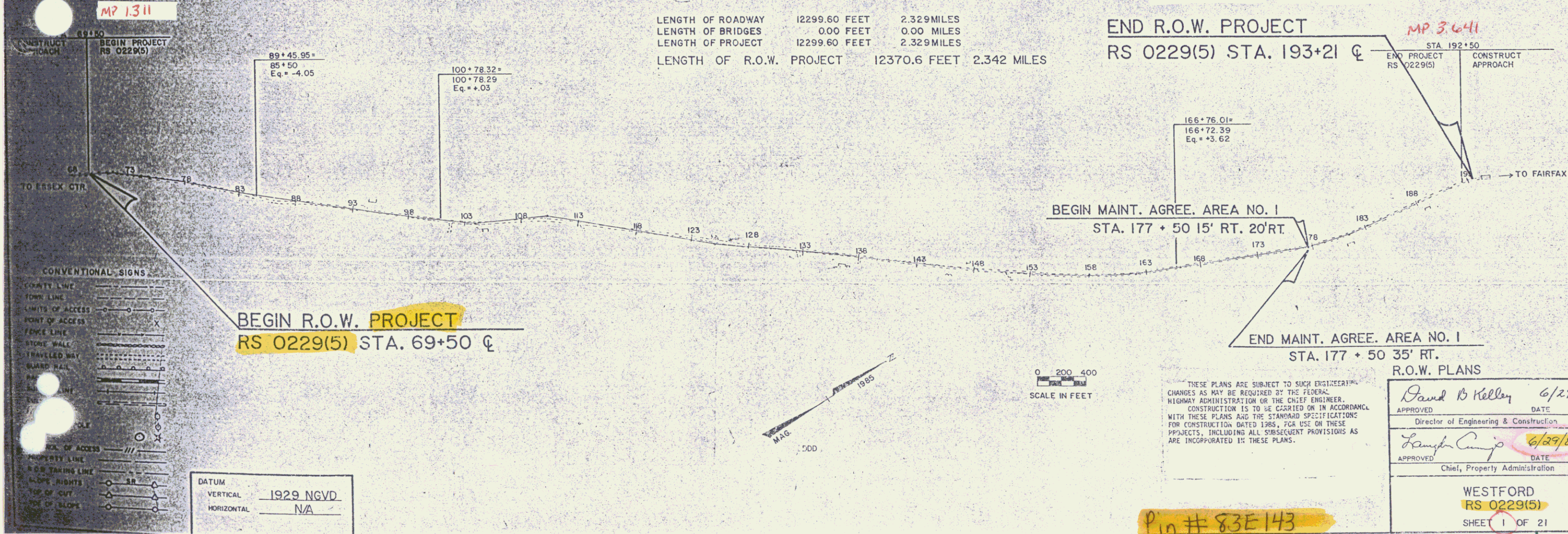
WORK TO BE PERFORMED ON THIS PROJECT INCLUDES GRADING, DRAINAGE, SUBBASE AND PAVEMENT, WITH MINOR RELOCATION OF VT. ROUTE 128.

LENGTH OF ROADWAY	12299.60 FEET	2.329 MILES
LENGTH OF BRIDGES	0.00 FEET	0.00 MILES
LENGTH OF PROJECT	12299.60 FEET	2.329 MILES
LENGTH OF R.O.W. PROJECT	12370.6 FEET	2.342 MILES

RIGHT-OF-WAY DIVISION
TOWN FILE

PERPETUAL
Town of Westford Vt 128
(To Be Returned To R.O.W. Division)

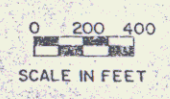
END R.O.W. PROJECT
RS 0229(5) STA. 193+21



CONVENTIONAL SIGNS

COUNTY LINE	---
TOWN LINE	---
LIMITS OF ACCESS	---
POINT OF ACCESS	X
FENCE LINE	---
STONE WALL	---
TRAVELLED WAY	---
GUARD RAIL	---
RAIL LINE	---
...	...

DATUM
VERTICAL 1929 NGVD
HORIZONTAL N/A



THESE PLANS ARE SUBJECT TO SUCH ENGINEERING CHANGES AS MAY BE REQUIRED BY THE FEDERAL HIGHWAY ADMINISTRATION OR THE CHIEF ENGINEER. CONSTRUCTION IS TO BE CARRIED ON IN ACCORDANCE WITH THESE PLANS AND THE STANDARD SPECIFICATIONS FOR CONSTRUCTION DATED 1985. FOR USE ON THESE PROJECTS, INCLUDING ALL SUBSEQUENT PROVISIONS AS ARE INCORPORATED IN THESE PLANS.

R.O.W. PLANS

APPROVED David B Kelley 6/29/87
DATE

APPROVED Lambert 6/29/87
DATE

Director of Engineering & Construction
Chief, Property Administration

WESTFORD
RS 0229(5)
SHEET 1 OF 21

Pin # 83E143

STATE OF VERMONT
 AGENCY OF TRANSPORTATION
 RIGHT OF WAY PLANS
 DETAIL SHEET

POOR ORIGINAL COPY

PARCEL NO.	GRANTOR	SHEET NO.	BEGINNING STATION	ENDING STATION	TAKING	REM.	RIGHTS	TITLE TAKEN	DATE	TOWN OR CITY RECORDED	BK.	PG.	REMARKS	REVISION NO.	SHEET NO.	DESCRIPTION OF REVISION	DATE	MADE BY	APPROVED BY			
1	DELETED												FORMELY HYSKELL	1	3-11	PARCELS 2-12 & 15-19 REVISE MILE POST FOR ALL DRIVES. PER C.O. NO. 6988.	7-22-87	M.J.R.	JGR			
														2	10,20	PARCEL NO.13 WATKINS. ADD NEW DRIVE AT STA. 178+34 RT. DELETE DRIVE (T) AT STA. 177+75 RT. ~178+25 RT. PER C.O. 6956.	7-29-87	M.J.R.	JOP			
														3	8,18	PARCEL NO. 10 POULIOT. REMOVE CULVERT AT STA. 147+29 LT. ADD CULVERT AT STA. 146+78 ~147+50. DELETE SR (T) AT REV. STA. 146+86 LT. ~147+22 LT. PER C.O. 6954	7-29-87	M.J.R.	JOP			
														4	8,18	PARCEL NO. 10 POULIOT. ADD DRIVE AT STA. 148+16 RT. ADD SPLIT RAIL FENCE STA. 147+42 LT. ~147+89 LT. TO PLANS. ADD REMOVE & RESET NOTE TO PLANS. PER C.O. 6955	7-29-87	M.J.R.	JOP			
2A	PERRY, DONALD M. & PERRY, RONALD B.	13,14	69 + 50 RT. 70 + 15 RT. 70 + 42 RT. REV. 72 + 10 RT. REV. 77 + 00 RT. REV. 80 + 00 RT. REV. 80 + 18 RT. REV. 80 + 08 RT.	REV. 83 + 72 RT. REV. 79 + 91 RT. REV. 71 + 35 RT. REV. 74 + 00 RT. REV. 79 + 91 RT. REV. 83 + 36 RT. REV. 84 + 20 RT.	0.23 A±		CONST. EASE. (T) (0.21 A±) SLOPE (P) (0.02 A±) SLOPE (P) (0.16 A±) SLOPE (P) (0.09 A±) DRIVE (T) SLOPE (P) (0.05 A±) CONST. EASE. (T) (0.77 A±)	WD	8-3-88	WESTFORD	56	81	(890 S.F.±) (4225 S.F.±) 16' GRAVEL M.P. 0146 (2411 S.F.±)	5	7	PARCEL NO. 9 COTA. REVISE 9A AREA TO 0.04A±. REVISE 9B AREA TO 0.11A±. REVISE REMAINDER ON 9B TO 0.85A±. PER C.O. 7007	7-29-87	M.J.R.	JOP			
														6	17,18	PARCEL NO. 10 POULIOT. ADD ADDITIONAL BARN AND SILO TOPO. PER C.O. NO. 7153	1-4-88	M.J.R.	JOP			
														7	5	PARCEL NO. 4 PERRY ADD SLOPE (P) AT STA. 98+91 LT. ~ 99+45 LT. TO DETAIL SHEET PER. CO. NO. 7159	01/13/88	A.S.J.	JOP			
														8	11,21	PARCEL NO. 18 BOUFFARD LOCATED 36'M AT STA. 181+75 LT.± CHANGED SLOPE (P) TO (T) AT STA. 189+00 LT. ~ 192+25 LT. PER. CO. NO. 7160	01/13/88	A.S.J.	JOP			
														9	18	PARCEL NO. 10 POULIOT. ADD WATERLINE SLEEVE AT STA. 147+15 RT. ~ 147+30 LT. PER CO. NO. 7154	1-19-88	M.J.R.	JOP			
2B		13,14,15	69 + 50 LT. REV. 73 + 60 LT. REV. 73 + 08 LT. REV. 75 + 54 LT. REV. 77 + 55 LT. REV. 78 + 50 LT. REV. 84 + 33 LT. REV. 85 + 18 LT. REV. 85 + 25 LT. REV. 86 + 44 LT. REV. 86 + 50 LT. REV. 86 + 89 LT. REV. 87 + 00 LT. REV. 87 + 00 LT. 91 + 85 LT. 91 + 95 LT. 92 + 20 LT. 92 + 40 LT. 92 + 42 LT. 92 + 50 LT. 94 + 26 LT. 94 + 40 LT. 94 + 93 LT. 95 + 30 LT. 95 + 30 LT. 95 + 50 LT. 98 + 48 LT. REV. 72 + 50 LT.	98 + 91 LT. REV. 75 + 75 LT. REV. 77 + 50 LT. REV. 86 + 87 LT. REV. 83 + 00 REV. 84 + 70 LT. REV. 86 + 85 LT. REV. 88 + 50 LT. 91 + 83 LT. 94 + 15 LT. 93 + 00 LT. 92 + 45 LT. 96 + 50 LT. 96 + 60 LT. 98 + 91 LT. 98 + 91 LT.	1.12 A±		SLOPE (T) (0.03 A±) CONST. EASE. (T) (0.10 A±) CUL. & DR. (P) CONST. EASE. (T) (0.31 A±) SLOPE (P) (0.10 A±) SLOPE (P) (1.36 S.F.±) SLOPE (P) (0.05 A±) CUL. & DR. (P) CUL. DIT. & DR. (P) CUL. & DR. (P) DRIVE (T) SLOPE (T) (0.02 A±) CONST. EASE. (T) (0.07 A±) DRIVE (T) CONST. EASE. (T) (0.04 A±) DITCH (P) (144 S.F.±) CULVERT (P) DRAINAGE (P) DRAINAGE (P)									FENCE (1189 S.F.±) (2091 S.F.±) 12' GRAVEL M.P. 0159 (728 S.F.±) (3049 S.F.±) 12' GRAVEL M.P. 0169 (1698 S.F.±)	10	16	PARCEL NO. 5 STARK. ADD SEWER LINE SLEEVE AT REV. 126+44 LT. ~ REV. 126+50 RT. ADD WATER LINE SLEEVE AT STA. 125+06 RT. ~ 125+17 LT. PER C.O. NO. 7085	1-22-88	M.J.R.	JOP
														11	11,21	PARCEL NO. 19 TRI-ENTERPRISE INC. DELETED LIFE ESTATE TO (PAUL S. & ELLEN L. HUNTLEY DUE TO TITLE CHECK PER CO. 7173	1-26-88	A.S.J.	JOP			
														12	7,15	PARCEL NO. 6 WRIGHT CHANGE TITLE FROM COLBY, RANDALL SR. & ELIZABETH TO WRIGHT, MARTHA J. PER CO 7174	1-26-88	A.S.J.	JOP			
														13	11,21	PARCEL NO. 19 TRI-ENTERPRISE INC. REDUCED SIZE OF TAKING, ADDED REMOVAL TO GARAGE PER CO. NOS. 7166 & 7168	2-4-88	J.D.P.	JOP			
														14	9,21	PARCEL NO. 12 LAVALLEE ADDED DRIVE AT STA. 187+00 PER CO NO. 7155	2-5-88	J.D.P.	JOP			
														15	8,17,18	PARCEL NO. 10 POULIOT. ADDED DITCH BY OPTION ONLY PER C.O. NO. 7189	2-5-88	J.D.P.	JOP			
														16	20	PARCEL NO. 16 MINOR. ADD TOPO AND RECONSTRUCT DRIVE PER CO. NO. 7167	2-5-88	J.D.P.	JOP			
														17	10,20	PARCEL NO 16 MINOR. ADDED UNUSED SEPTIC TANK TO PLANS PER CO. 7211	2-25-88	A.S.J.	JGR			

M.J.R. DATE 6-11-87
 CHECKED BY: K.D.P. DATE 6-11-87

DR. RT. - DRAINAGE RIGHT
 DIT. RT. - DITCHING RIGHT
 CH. RT. - CHANNEL RT.
 DRIVE RT. - DRIVE RIGHT
 CUL. RT. - CULVERT RIGHT
 (D) - DEMOLITION OR REMOVAL
 (W) - WATER SOURCES

PRESENT R.O.W.
 TAKING WITHOUT ACCESS

TAKING WITH ACCESS
 PERMANENT EASEMENT
 TEMPORARY EASEMENT

LEGEND

--- CONST. EASE ---
 SR SR
 P
 L
 SLOPE RIGHTS
 PROPERTY LINE
 TOP OF CUT
 TOE OF SLOPE

R.O.W. PLANS

APPROVED: *Donald M. Perry* DATE: 7-2-88
 AGENT D. PLANS & TITLES

WESTFORD
 RS 0229 (5)
 SHEET 3 OF 21

STATE OF VERMONT
 AGENCY OF TRANSPORTATION
 RIGHT OF WAY PLANS
 DETAIL SHEET

TABLE OF PROJECT PROPERTY ACQUISITION

PARCEL NO.	GRANTOR	SHEET NO.	BEGINNING STATION	ENDING STATION	TAKING	REM.	RIGHTS	TITLE TAKEN	DATE	TOWN OR CITY RECORDED	BK.	PG.	REMARKS	REVISION NO.	SHEET NO.	DESCRIPTION OF REVISION	DATE	MADE BY	APPROVED BY
2C	PERRY, DONALD M. & PERRY, RONALD B. (CONTINUED)	14	REV. 88+54 RT. REV. 88+62 RT. 92+12 RT. 93+30 RT.	93+40 RT. REV. 89+20 RT. 93+40 RT.	0.09 A±		SLOPE (P) (195 SF±) CONST. EASE. (T) (0.06A±) DRIVE (T)						4139 SF± 2795 SF± 12' GRAVEL MP 0172	18	11,21	PARCEL 19 TRI-ENTERPRISE INC. REVISE DRIVE AT STA. 192+20 RT. WE ARE NO LONGER AFFECTING GARAGE PER CO. 7217	3/16/88	A.S.J.	<i>Sub</i>
2D		13, 14, 15	69+50 RT. REV. 84+72 RT. REV. 84+90 RT. REV. 85+20 RT.	98+91 LT. 91+50 RT. REV. 85+85 RT. 94+10 LT.	3.09A±		ALL R.T. & I. CONST. EASE. (T) (0.06A±) SLOPE (P) (0.03A±)						HWY. EASE. VT. RTE. 128 2318 SF± 1100 SF± STONEWALL	19	10	PARCEL 16 MINOR CHANGE REMAINDER FROM 0.58 A± TO 1.77 A± PER CO. 7225	3/30/88	M.J.R.	<i>Sub</i>
3A	FOSS, DONALD C. & SUZANNE D.	14, 15	93+39 RT. 93+40 RT. 94+55 RT. 94+75 RT. 98+30 RT. 99+88 RT. 99+98 RT. REV. 101+80 RT. REV. 101+90 RT. REV. 104+20 RT. 93+40 RT. REV. 103+50 RT.	REV. 104+20 RT. 94+20 RT. REV. 101+70 RT. 95+35 RT. 98+77 RT. 100+04 RT. REV. 103+44 RT. REV. 107+57 RT.	0.22A±		CONST. EASE. (TX 308 SF±) CONST. EASE. (T) (0.10A±) SLOPE (T) (250 SF±) SLOPE (P) (144 SF±) DITCH (P) DRAINAGE (P) DRIVE (T) CONST. EASE. (T) (392 SF±) REMOVE & RESET (T)	COND	11-22-88	WESTFORD	56	546	16' GRAVEL MP 0188 WOOD RAIL FENCE 12' GRAVEL MP 0191	22	7	PARCEL NO. 10 POULIOT AREA FOR CONST. EASE. (T) FROM REV. 150+70 LT. ~ REV. 158+05 LT. IS 0.14A± AN NOT 0.014A± PER CO. 7287	5/27/88	A.S.J.	<i>ggm</i>
3B		14, 15	93+39 RT.	REV. 104+20 RT.	0.62A±		ALL R.T. & I.						HWY. EASE. VT. RTE. 128	23	9, 19, 20	PARCEL NO. 12 LAVALLEE DELETED DIT. & DR. AT STA. 183+00 LT. CHANGED DRIVE FROM 164+00 RT. TO 163+00 RT. PER CO. 7286, 7292	6-03-88	A.S.J.	<i>EHF</i>
3C		15	REV. 105+18 RT. REV. 105+75 RT. REV. 105+12 RT. REV. 106+28± RT. REV. 106+33 RT. REV. 106+16 RT. REV. 105+18 RT.	REV. 107+57 RT. REV. 106+03 RT. REV. 107+18 RT.	0.13A±		ALL R.T. & I. CONST. EASE. (T) (48 SF±) DRIVE (T) REMOVE & RESET (T) CUL. & DR. (P) CONST. EASE. (T) (310 SF±) REMOVE & RESET (T)						HWY. EASE. VT. RTE. 128 14' GRAVEL MP 0196 SIGN * VERMONT TURKEY FARM *(PERS.) WOOD RAIL FENCE	24	10, 20, 21	PARCEL 15 JARVIS DELETED SLOPE AT STA. 181+38 RT. ~ 182+27 PER. CO. 7293	6-03-88	A.S.J.	<i>EHF</i>
														25	10, 20, 21	PARCEL 16 MINOR DELETED SLOPE AT STA. 182+27 RT. 182+55 RT. DELETE SLOPE AT 182+70 RT. 185+20 RT. DELETE ALL R.T. & I. ON SEPTIC. CHANGE BEGIN. OF CONST. EASE. FROM 184+00 RT. 184+25 RT. AND AREA TO 0.04A± 1796 S.F.±. PER CO. 7294 AND CO. 7285	6-03-88	A.S.J.	<i>EHF</i>
														26	4, 7, 11	PARCEL NO. 6 WRIGHT. DELETE TWO REMOVE & RESET (T) RIGHTS AT REV. 105+14± RT. ~ REV. 105+18± RT. AND REV. 104+20 RT. ~ REV. 104+30 RT. TRANSFER THESE RIGHTS TO PARCEL 3C & 3A, RESPECTIVELY. PER C.O. 7304	6-17-88	M.J.R.	<i>ggp</i>
														27	16	PARCEL NO. 5 STARK. CHANGE NOTE FROM 1" COPPER W/L APPROX. LOCATION TO 3/4" HEAVY BLACK PLASTIC W/L APPROX. LOCATION. PER C.O. 7295	6-17-88	M.J.R.	<i>ggp</i>
														28	7, 15	PARCEL NO. 6 WRIGHT. DELETE PARCEL 6A CHANGE 6B TO 6. PER C.O. 7347	7-26-88	M.J.R.	<i>ggm</i>
														29	6, 17	PARCEL 5 STARK. REVISED STA. FOR SEWER-LINE FROM REV. 126+44 LT. ~ REV. 126+50 RT. TO REV. 126+54 LT. ~ REV. 126+60 RT. LEACH-FIELD FROM REV. 126+50 RT. TO REV. 126+60 RT. PER CO. 7310	8-3-88	A.S.J.	<i>ggm</i>
														30		PARCEL 19 CHITTENDEN TRUST CO. TITLE CHANGE FROM TRI-ENTERPRISE INC. TO CHITTENDEN TRUST CO. PER CO. 7376	9-06-88	A.S.J.	<i>ggp</i>
														31	11, 21	PARCEL 18 BOUFFARD CHANGE SLOPES FROM (T) TO (P) PER C.O. 7363	9-28-88	M.J.R.	<i>ggp</i>

BY: A. JONES DATE 6/10/87

CHECKED BY: K. PERKINS DATE 6/10/87

170, 113 ROAD ET LY 11.3, 20, 83
PROP. ADM. N. 5-87 NO 140, 89

DR. RT.- DRAINAGE RIGHT
 DIT. RT.- DITCHING RIGHT
 CH. RT.- CHANNEL RT.
 DRIVE RT.- DRIVE RIGHT
 CUL. RT.- CULVERT RIGHT
 (D) - DEMOLITION OR REMOVAL
 (W) - WATER SOURCES

PRESENT R.O.W.
 TAKING WITHOUT ACCESS
 TAKING WITHOUT ACCESS ALONG PROPERTY LINE
 TAKING WITH ACCESS
 PERMANENT EASEMENT
 TEMPORARY EASEMENT

LEGEND
 --- CONST. EASE. --- CONSTRUCTION EASEMENT
 SR SR SLOPE RIGHTS
 P PROPERTY LINE
 L TOP OF CUT
 --- TOE OF SLOPE

R. O. W. PLANS

APPROVED: [Signature] DATE: 7-2-87
 AGENT D, PLANS & TITLES

WESTFORD
 RS 0229(5)
 SHEET 4 OF 21

STATE OF VERMONT
AGENCY OF TRANSPORTATION
RIGHT OF WAY PLANS
DETAIL SHEET

TABLE OF PROJECT PROPERTY ACQUISITION

PARCEL NO.	GRANTOR	SHEET NO.	BEGINNING STATION	ENDING STATION	TAKING	REM.	RIGHTS	TITLE TAKEN	DATE	TOWN OR CITY RECORDED	BK.	PG.	REMARKS	REVISION NO.	SHEET NO.	DESCRIPTION OF REVISION	DATE	MADE BY	APPROVED BY
4A	PERRY, RONALD B. & PAULINE V.	15	98+91 LT. 98+91 LT. 99+85 LT. 98+91 LT. 98+91 LT.	REV. 101+54 LT. 99+73 LT. REV. 101+54 LT. 99+45 LT.	0.06A±		CONST. EASE. (T) (0.01 A ±) SLOPE (P) (0.01 A ±)	WD	7/19/88	WESTFORD	56	19	2751 SF± 400 SF± 12' GRAVEL DRIVE MP 0184 230 SF±	32	4,15	PARCEL NO.3 FOSS. ADD DRIVE (T) AT STA. 103+50 RT. PER C.O. 7432	11-2-88	M.J.R.	<i>Sub</i>
						2.79A±								33	8,17 18	PARCEL NO. 10 POULIOT. DELETE DRIVE AT 145+70 RT. & DRIVE AT 153+54 RT. ADD CUL. (P) FROM 144+90 RT.- 145+10 RT. ADD DRAIN (P) AT 144+90 RT. ADD DRIVE (T) AT 145+27 RT. AND ONE AT 145+27 RT. PER C.O. 7453 <i>Means to Design 1-10-89</i>	11-21-88	M.J.R.	<i>JOP</i>
4B		15	98+91 LT.	REV. 101+54 LT.	0.15A±		ALL R. T. & I.						HWY. EASE. VT. RTE. 128						
5A	STARK, JOHN N. & MARIAN A. TRUSTEES	15,16	REV. 101+54 LT. REV. 101+54 LT. REV. 103+13 LT. REV. 103+58 LT. REV. 104+83 LT. REV. 106+07 LT. REV. 112+77 LT. REV. 112+88 LT. REV. 113+00 LT. REV. 115+23 LT. REV. 116+35 LT. REV. 117+00 LT. REV. 117+25 LT. REV. 101+54 LT.	REV. 117+64 LT. REV. 102+87 LT. REV. 105+35 LT. REV. 104+30 LT. REV. 105+15 LT. REV. 108+95 LT. REV. 117+50 LT. REV. 113+16 LT. REV. 117+00 LT. REV. 118+20 LT. REV. 111+00 RT.	0.70A±		CONST. EASE. (T) (0.02A±) CONST. EASE. (T) (0.04A±) SLOPE (P) (305 SF±) SLOPE (P) (72 SF±) CONST. EASE. (T) (0.02A±) CONST. EASE. (T) (0.07A±) DITCH (P) (0.01A±) DRAINAGE (P) SLOPE (P) (0.02A±) CUL. & DIT. (P) CUL. & DR. (P) DITCH (P) (269 SF±)	COND	11/22/88	WESTFORD	56	546	STONEWALL AND FENCE 951 SF± 878 SF± 3486 SF± 402 SF± 1104 SF± STONEWALL	34	10,21	PARCEL NO. 14 TOWN OF WESTFORD. ADD NEW PARCEL 14A. CUL. & DR. (P). STA. 143+25 LT. PER C.O. 7939	6-20-90	C.C.P.	<i>JOP</i>

BY: <u>A. JONES</u> DATE <u>6/8/87</u> CHECKED BY: <u>K. PERKINS</u> DATE <u>6/8/87</u> <small>(70) 11304001 LV 1, 21, 83 NO 140, 89 PROP. ADMIN. 5-87</small>	DR. RT.- DRAINAGE RIGHT DIT. RT.- DITCHING RIGHT CH. RT.- CHANNEL RT. DRIVE RT.- DRIVE RIGHT CUL. RT.- CULVERT RIGHT (D)- DEMOLITION OR REMOVAL (W)- WATER SOURCES	PRESENT R.O.W. TAKING WITHOUT ACCESS TAKING WITHOUT ACCESS ALONG PROPERTY LINE TAKING WITH ACCESS PERMANENT EASEMENT TEMPORARY EASEMENT	LEGEND --- CONST. EASE. --- CONSTRUCTION EASEMENT SR SR SLOPE RIGHTS P PROPERTY LINE L TOP OF CUT --- TOE OF SLOPE	R. O. W. PLANS APPROVED: <u>[Signature]</u> DATE: <u>7-2-87</u> AGENT D, PLANS & TITLES	WESTFORD RS 0229(5) SHEET 5 OF 21
--	--	--	---	---	---

STATE OF VERMONT
AGENCY OF TRANSPORTATION
RIGHT OF WAY PLANS
DETAIL SHEET

PARCEL NO.	GRANTOR	SHEET NO.	BEGINNING STATION	ENDING STATION	TAKING	REM.	RIGHTS	TITLE TAKEN	DATE	TOWN OR CITY RECORDED	BK.	PG.	REMARKS	REVISION NO.	SHEET NO.	DESCRIPTION OF REVISION	DATE	MADE BY	APPROVED BY		
5B	STARK, JOHN N. & MARIAN A., TRUSTEES (CONTINUED)	15,16,17	REV. 112 + 49 RT. REV. 111 + 92 RT. REV. 112 + 00 RT. REV. 112 + 12 RT. REV. 113 + 35 RT. REV. 113 + 43 RT. REV. 114 + 00 RT. REV. 115 + 50 RT. REV. 116 + 35 RT. REV. 118 + 10 RT. REV. 118 + 16 RT. REV. 118 + 40 RT. REV. 120 + 50 RT. REV. 123 + 18 RT. REV. 123 + 07 RT. REV. 124 + 70 RT. REV. 124 + 74 RT. REV. 125 + 06 RT. REV. 125 + 25 RT. REV. 126 + 60 RT. REV. 130 + 50 RT. REV. 131 + 00 RT. REV. 131 + 54 RT. REV. 131 + 54 RT.	REV. 132 + 50 RT. REV. 117 + 42 RT. REV. 113 + 25 RT. REV. 113 + 33 RT. REV. 115 + 50 RT. REV. 116 + 35 RT. REV. 117 + 00 RT. REV. 124 + 63 RT. REV. 119 + 50 RT. REV. 123 + 00 RT. REV. 123 + 40 RT. REV. 130 + 00 RT. REV. 125 + 10 RT. REV. 127 + 50 RT. REV. 132 + 50 RT. REV. 131 + 54 RT. REV. 131 + 90 RT.	1.09 A±		CONST. EASE. (T)(0.12 A±) DITCH (P) (0.02 A±) DRIVE (T) DITCH (P) (259 S.F.±) SLOPE (P) (0.02 A±) CUL. DIT. & DR. (P) DRIVE (T) CONST. EASE. (T)(0.12 A±) SLOPE (P) (0.04 A±) SLOPE (P) (165 S.F.±) DRIVE (T) DRIVE (T) CONST. EASE. (T)(0.09 A±) SLOPE (T) (0.03 A±) CONST. EASE. (T)(0.04 A±) SLOPE (T) (0.01 A±) DIT. & DR. (P) CULVERT (P)							STONEWALL (769 S.F.±) 14' GRAVEL M.P. 0210 STONEWALL (865 S.F.±) 14' GRAVEL M.P. 0219 STONEWALL (1698 S.F.±) 20' GRAVEL M.P. 0228 12' GRAVEL M.P. 0231 (3963 S.F.±) WATERLINE (1525 S.F.±) LEACHFIELD (1742 S.F.±) (408 S.F.±)							
5C		17	REV. 133 + 14 LT. REV. 136 + 95 LT.	REV. 138 + 00 LT. REV. 138 + 00 LT.	0.10A±		CONST. EASE. (T)(0.01 A±)						(436 S.F.±)								
5D		15,16,17	REV. 101 + 54 LT. REV. 118 + 22 LT. REV. 125 + 10 RT. REV. 125 + 15 LT. REV. 126 + 54 RT. REV. 127 + 00 LT. REV. 127 + 87 LT. REV. 131 + 54 LT. REV. 131 + 80 LT. REV. 132 + 50 LT.	REV. 138 + 00 LT. REV. 125 + 17 RT. REV. 126 + 60 RT. REV. 133 + 21 LT. REV. 128 + 87 LT. REV. 132 + 35 LT.	3.60A±		ALL R.T. & L DRIVE (T) DRIVE (T) CONST. EASE. (T)(0.10 A±) SLOPE (P) (0.01 A±) CULVERT (P) SLOPE (T) (120 S.F.±) DRAINAGE (P)						HWY.EASE. VT.RTE. 128 14' GRAVEL M.P. 0219 WATERLINE 16' GRAVEL M.P. 0232 SEWERLINE (772 S.F.±)								

DR. RT.- DRAINAGE RIGHT
DIT. RT.- DITCHING RIGHT
CH. RT.- CHANNEL RT.
DRIVE RT.- DRIVE RIGHT
CUL. RT.- CULVERT RIGHT
ⓓ- DEMOLITION OR REMOVAL
Ⓜ- WATER SOURCES

PRESENT R.O.W.
TAKING WITHOUT ACCESS

TAKING WITH ACCESS
PERMANENT EASEMENT
TEMPORARY EASEMENT

LEGEND
--- CONST. EASE. ---
SR SR SLOPE RIGHTS
P PROPERTY LINE
L TOP OF CUT
O O TOE OF SLOPE

R.O.W. PLANS

CHECKED BY: M.J.R. DATE 6-10-87
CHECKED BY: K.D.P. DATE 6-10-87

APPROVED: *Lawrence D. Bell* DATE: 7-2-87
AGENT D. PLANS & TITLES

WESTFORD
RS 0229 (5)
SHEET 6 OF 21

STATE OF VERMONT
AGENCY OF TRANSPORTATION
RIGHT OF WAY PLANS
DETAIL SHEET

TABLE OF PROJECT PROPERTY ACQUISITION

PARCEL NO.	GRANTOR	SHEET NO.	BEGINNING STATION	ENDING STATION	TAKING	REM.	RIGHTS	TITLE TAKEN	DATE	TOWN OR CITY RECORDED	BK.	PG.	REMARKS	REVISION NO.	SHEET NO.	DESCRIPTION OF REVISION	DATE	MADE BY	APPROVED BY	
6	WRIGHT, MARTHA J.	15	REV. 104+18 RT. REV. 104+40 RT. REV. 104+28 RT. REV. 104+20 RT.	REV. 105+18 RT. REV. 104+50 RT. REV. 105+18 RT.	0.05 A± 0.23 A±		ALL R.T. & I. DRIVE (T) REMOVE & RESET (T)	COND	11-22-88	WESTFORD	56	546	2512 SF± HWY. EASE. VT. RTE. 128 14' GRAVEL MP 0193 2 WOOD POSTS							
7	LETORNEY, MARK J. & ANDREA N.	15	REV. 107+57 RT. REV. 107+90 RT. REV. 108+15± RT. REV. 108+36 RT. REV. 108+67 RT. REV. 107+57 RT.	REV. 111+16 RT. REV. 108+63 RT. REV. 111+16 RT.	0.20A± 9.90A±		ALL R.T. & I. DRIVE (T) REMOVE & RESET (T) SLOPE (T) (70 SF±) DRIVE (T)	COND	11-22-88	WESTFORD	56	546	HWY. EASE. VT. RTE. 128 14' GRAVEL MP 0199 SIGN "ROVER'S NORTH"(PERS.) 14' GRAVEL MP 0200							
8	ARK, JOHN N. & MARIAN A. TRUSTEES, LESSORS STARK, JEFFREY P. & KATHLEEN, LESSEES	17	REV. 132+50 RT. REV. 132+65 RT. REV. 132+60 RT. REV. 134+93 LT.± REV. 132+50 RT.	REV. 136+01 RT. REV. 136+01 RT.	0.09A± 9.81A±		CONST. EASE. (T) (0.07A±) DRIVE (T)	COND	11-22-88	WESTFORD	56	546	4224 SF± 3136 SF± 12' GRAVEL MP 0246 UNDERGROUND TEL. & POWER CABLE							
8B		17	REV. 132+50 RT.	REV. 136+01 RT.	0.20A±		ALL R.T. & I.						HWY. EASE. VT. RTE. 128							
9A	COTA, HENRY C. & SHIRLEY W.	17	REV. 136+01 RT. REV. 136+01 RT. REV. 137+20 RT. REV. 136+01 RT.	REV. 138+00 RT. REV. 137+50 RT. REV. 138+00 RT.	0.04A± 0.85A±		SLOPE (T) (0.01A±) DRIVE (T)	COND	11-22-88	WESTFORD	56	546	1696 SF± 449 SF± 14' GRAVEL MP 0255							
9B		17	REV. 136+01 RT.	REV. 138+00 RT.	0.11A±		ALL R.T. & I.						HWY. EASE. VT. RTE. 128							
10A	POULIOT, DONALD L. & DALE M.	17, 18	REV. 138+00 LT. REV. 138+00 LT. REV. 138+20 LT. REV. 145+28 LT. REV. 146+25 LT. REV. 146+33 LT. REV. 147+29 LT. REV. 147+46 LT. REV. 147+25± LT. REV. 147+94 LT. REV. 148+79 LT. REV. 150+70 LT. REV. 151+65 LT. REV. 156+50 LT.	REV. 159+12 LT. REV. 146+20 LT. REV. 145+71 LT. REV. 146+80 LT. REV. 147+30± LT. REV. 150+40 LT. REV. 158+05 LT. REV. 153+55 LT. REV. 157+35 LT.	0.45A±		CONST. EASE. (T) (0.12A±) DRIVE (T) SLOPE (T) (110 SF±) DRIVE (T) CONST. EASE. (TX 316 SF±) DRIVE (T) REMOVE & RESET (T) DRIVE (T) CONST. EASE. (T) (0.01A±) CONST. EASE. (T) (0.14A±) SLOPE (P) (0.01A±) SLOPE (P) (146 SF±)	COND	11-22-88	WESTFORD	56	546	12' GRAVEL MP 0257 14' GRAVEL MP 0272 14' GRAVEL MP 0274 1' ASH WATERLINE 14' GRAVEL MP 0275 653 SF±							

11 FROM DET. DOK LV-22
1140, 89
BY: A. JONES DATE 6/9/87
CHECKED BY: K. PERKINS DATE 6/9/87
PROP. ADMIN. 5-87

DR. RT. - DRAINAGE RIGHT
DIT. RT. - DITCHING RIGHT
CH. RT. - CHANNEL RT.
DRIVE RT. - DRIVE RIGHT
CUL. RT. - CULVERT RIGHT
(D) - DEMOLITION OR REMOVAL
(W) - WATER SOURCES

PRESENT R.O.W.
TAKING WITHOUT ACCESS
TAKING WITH ACCESS ALONG PROPERTY LINE
TAKING WITH ACCESS
PERMANENT EASEMENT
TEMPORARY EASEMENT

LEGEND
--- CONST. EASE. --- CONSTRUCTION EASEMENT
SR SR SLOPE RIGHTS
P PROPERTY LINE
L TOP OF CUT
--- TOE OF SLOPE

R. O. W. PLANS
APPROVED: [Signature] DATE: 22-87
AGENT D, PLANS & TITLES

WESTFORD
RS 0229(5)
SHEET 7 OF 21

TABLE OF PROJECT PROPERTY ACQUISITION

STATE OF VERMONT
AGENCY OF TRANSPORTATION
RIGHT OF WAY PLANS
DETAIL SHEET

PARCEL NO.	GRANTOR	SHEET NO.	BEGINNING STATION	ENDING STATION	TAKING	REM.	RIGHTS	TITLE TAKEN	DATE	TOWN OR CITY RECORDED	BK.	PG.	REMARKS	REVISION	SHEET	DESCRIPTION OF REVISION	DATE	MADE BY	APPROVED BY				
10B	POULIOT, DONALD L. & DALE M. (CONTINUED)	17, 18 19	REV. 138+00 RT. REV. 138+14 RT. REV. 138+45 RT. REV. 141+86 RT. REV. 144+00 RT. REV. 144+25 RT. REV. 145+27 RT. REV. 146+80 RT. REV. 147+15 RT. REV. 148+25 RT. REV. 149+84 RT. REV. 149+91 RT. REV. 149+91 RT. REV. 149+92 RT. REV. 150+02 RT. REV. 150+09 RT. REV. 150+90 RT. REV. 150+90 RT. REV. 151+04 RT. REV. 151+30 RT. REV. 152+25 RT. REV. 159+50 RT. REV. 153+62 RT. REV. 153+78 RT. REV. 156+14 RT. REV. 156+50 RT. REV. 156+64 RT. REV. 157+54 RT. REV. 160+00 RT. REV. 148+16 RT. REV. 143+60 RT. REV. 144+90 RT. REV. 144+90 RT.	REV. 162+64 RT. REV. 144+00 RT. REV. 145+57 RT. REV. 147+73 RT. REV. 147+18 RT. REV. 149+77 RT. REV. 150+65 RT. REV. 151+12 RT. REV. 150+02 RT. REV. 151+02 RT. REV. 153+30 RT. REV. 153+10 RT. REV. 154+92 RT. REV. 154+45 RT. REV. 159+03 RT. REV. 157+50 RT. REV. 161+64 RT. REV. 146+60 RT. REV. 145+10 RT.	0.54 A±		DRIVE (T) CONST. EASE. (TX 0.09 A±) CUL. DIT. & DR. (P) CUL. & DR. (P) CONST. EASE. (TX 0.02 A±) DRIVE (T) DRIVE (T) CONST. EASE. (TX 0.02 A±) DRIVE (T) SLOPE (T) (0.01 A±) CONST. EASE. (TX 0.02 A±) CULVERT (P) DRAINAGE (P) CUL. DIT. & DR. (P) DRAINAGE (P) CULVERT (P) DRIVE (T) CONST. EASE. (TX 0.04 A±) SLOPE (T) (30 S.F. ±) DRIVE (T) CONST. EASE. (TX 0.04 A±) SLOPE (T) (0.01 A±) CONST. EASE. (TX 0.05 A±) SLOPE (P) (100 S.F. ±) CUL. DIT. & DR. (P) CUL. & DR. (P) CONST. EASE. (TX 0.02 A±) DITCH (P) DRAIN (P) CUL. (P)						16' GRAVEL M.P. 0257 (780 S.F. ±) 24' GRAVEL M.P. 0270 95' FARM M.P. 0274 WATERLINE (731 S.F. ±) 12' GRAVEL M.P. 0279 (422 S.F. ±) (1089 S.F. ±) 10' GRAVEL MP. 0281 (1873 S.F. ±) DRIVE (T) 14' GRAVEL MP. 0297 (1873 S.F. ±) (434 S.F. ±) (2397 S.F. ±) (846 S.F. ±) 14' GRAVEL MP 0275										
10C		17, 18 19	REV. 138+00 LT. REV. 147+18 ±RT REV. 147+42±LT.	REV. 162+63 RT. REV. 147+25±LT REV. 147+89±LT.	2.62 A±		ALL R.T. & I. REMOVE & RESET (T)						HWY. EASE. VT. RTE. 128 WATERLINE SPLIT-RAIL FENCE										
11A	ROMAN CATHOLIC DIOCESE OF BURLINGTON, VERMONT, INC. & POULIOT, ANTONIO & GABRIELLE	18, 19	REV. 159+12 LT. REV. 160+70 LT. REV. 161+24 LT. REV. 159+12 LT.	REV. 162+70 LT. REV. 162+70 LT. REV. 162+70 LT.	0.09A± 2.72A±		CONST. EASE. (T) (0.02A±) ALL R.T. & I.	OPTION	5-26-89	WESTFORD	58	29	(1295 S.F. ±) 20' GRAVEL DRIVE M.P. 0300										
11B		18, 19	REV. 159+10 LT.	REV. 162+70 LT.	0.19A±		ALL R.T. & I.						HWY. EASE. VT. RTE. 128										

MADE BY: JONES DATE 6/8/87
BY: K. PERKINS DATE 6/8/87
PROP. ADMIN. 5-87 (70.11) PROJECT LV+13 LV+14 LV+15 LV+16 LV+17 LV+18 LV+19 LV+20 LV+21 LV+22 LV+23

DR. RT. - DRAINAGE RIGHT
DIT. RT. - DITCHING RIGHT
CH. RT. - CHANNEL RT.
DRIVE RT. - DRIVE RIGHT
CUL. RT. - CULVERT RIGHT
(D) - DEMOLITION OR REMOVAL
(W) - WATER SOURCES

PRESENT R.O.W.
TAKING WITHOUT ACCESS
TAKING WITHOUT ACCESS ALONG PROPERTY LINE
TAKING WITH ACCESS
PERMANENT EASEMENT
TEMPORARY EASEMENT

--- P ---
--- L ---
(P)
(L)
(T)

LEGEND
--- CONST. EASE. --- CONSTRUCTION EASEMENT
SR SR SLOPE RIGHTS
P SR PROPERTY LINE
L TOP OF CUT
--- TOE OF SLOPE

APPROVED: *Lawrence A. Blinn* DATE: 7-2-87
AGENT D. PLANS & TITLES

WESTFORD
RS 0229(5)
SHEET 8 OF 21

TABLE OF PROJECT PROPERTY ACQUISITION

STATE OF VERMONT
AGENCY OF TRANSPORTATION
RIGHT OF WAY PLANS
DETAIL SHEET

PARCEL NO.	GRANTOR	SHEET NO.	BEGINNING STATION	ENDING STATION	TAKING	REM.	RIGHTS	TITLE TAKEN	DATE	TOWN OR CITY RECORDED	BK.	PG.	REMARKS	REVISION	SHEET	DESCRIPTION OF REVISION	DATE	MADE BY	APPROVED BY	
12A	LAVALLEE, ROGER L. & ELAINE S.	19, 20	REV. 162+63 RT. REV. 162+63 RT. REV. 162+95 RT. REV. 163+00 RT. REV. 164+06 RT. 170+87 RT. 170+18 RT. 174+50 RT. 175+06 RT. 175+50 RT.	177+26 RT. REV. 169+70 RT. REV. 163+13 RT. REV. 165+45 RT. 173+45 RT. 176+25 RT.	0.37A±		CONST. EASE. (T) (0.12A±) SLOPE (T) (19 SF±) DRIVE (T) SLOPE (T) (0.02A±) CUL. DIT. & DR. (P) CONST. EASE. (T) (0.03A±) DRIVE (T) CONST. EASE. (T) (0.01A±) CUL. & DR. (P)	60ND	11-22-88	WESTFORD	56	546	12' GRAVEL MP 0305 1020 SF± 1385 SF± 12' GRAVEL MP 0325 561 SF±							
12B		19, 20 21	REV. 164+20 LT. REV. 164+20 LT. 167+50 LT. 169+50 LT. 169+55 LT. 176+45 LT. 177+00 LT. 178+52± LT 178+60± LT 179+23 LT. 183+33 LT. 185+70 LT. 187+39 LT. 187+48 LT. 187+00 LT.	187+82 LT. 169+45 LT. 171+65 LT 178+00 LT. 187+00 LT. 184+20 LT. 187+45 LT	0.57A±		CONST. EASE. (T) (0.05A±) DRAINAGE (P) DRIVE (T) CONST. EASE. (T) (0.01A±) CONST. EASE. (T) (0.02A±) CONST. EASE. (T) (0.15A±) SLOPE (T) (334 SF±) DRAINAGE (P) CULVERT (P) CUL. DIT. & DR. (P) DRIVE (T)						2396 SF± 12' GRAVEL MP 0316 480 SF± 779 SF± 12' GRAVEL DRIVE MP 0330 CONC. FOUNDATION CONC. FOUNDATION 12' GRAVEL MP 0349							
12C		21	189+63 RT. 189+63 RT. 189+63 RT. 190+65 RT. 191+88 RT.	192+08 RT. 191+57 RT. 191+40 RT.	0.03A±		CONST. EASE. (T) (0.04A±) SLOPE (T) (0.03A±) CUL. & DR (P) DRIVE (T)						1470 SF± 1786 SF± 1350 SF± 12' GRAVEL MP 0358							
12D		19, 20 21	REV. 162+62 C	187+82 LT.	2.25 A±		ALL R. T. & I.						HWY. EASE. VT. RTE. 128							
12E		21	189+63 C	192+08 RT.	0.14A±		ALL R. T. & I.						HWY. EASE. VT. RTE. 128							
12F		20	177+25 RT.	177+74 RT.	0.01A±		ALL R. T. & I.						6000 SF± HWY. EASE. T. H. #19							

170-111-000-001 (13-15, 20, 22, 63) W 140.120
MADE BY: JONES DATE 6/8/87
DRAWN BY: K. PERKINS DATE 6/8/87
10-140.120
PROP. ADMIN. 5-87 170-111-000-001 (13-15, 20, 22, 63)

DR. RT.- DRAINAGE RIGHT
DIT. RT.- DITCHING RIGHT
CH. RT.- CHANNEL RT.
DRIVE RT.- DRIVE RIGHT
CUL. RT.- CULVERT RIGHT
(D)- DEMOLITION OR REMOVAL
(W)- WATER SOURCES

PRESENT R.O.W.
TAKING WITHOUT ACCESS
TAKING WITHOUT ACCESS ALONG PROPERTY LINE
TAKING WITH ACCESS
PERMANENT EASEMENT
TEMPORARY EASEMENT

--- P ---
--- L ---
(P)
(T)

LEGEND
--- CONJ. EASE. --- CONSTRUCTION EASEMENT
SR SR SLOPE RIGHTS
P PROPERTY LINE
L TOP OF CUT
--- TOE OF SLOPE

APPROVED: *Samuel A. Jones* DATE: 7/2/87
AGENT D. PLANS & TITLES

WESTFORD
RS 0229(5)
SHEET 9 OF 21

STATE OF VERMONT
 AGENCY OF TRANSPORTATION
 RIGHT OF WAY PLANS
 DETAIL SHEET

PARCEL NO.	GRANTOR	SHEET NO.	BEGINNING STATION	ENDING STATION	TAKING	REM.	RIGHTS	TITLE TAKEN	DATE	TOWN OR CITY RECORDED	BK.	PG.	REMARKS	REVISION NO.	SHEET NO.	DESCRIPTION OF REVISION	DATE	MADE BY	APPROVED BY		
13A	WATKINS, WARREN R. & CAROL H.	20	177 + 98 RT. 178 + 34 RT.	178 + 98 RT.	0.03 A±		DRIVE (T)	WD	8-9-88	WESTFORD	56	91	(130 S.F.±) 12' GRAVEL M.P. 0332								
			177 + 62 RT.	178 + 98 RT.		3.99 A±															
13B		20	177 + 74 RT.	179 + 00 C	0.07 A±		ALL R.T. & L.						(2833 S.F.±) HWY. EASE. VT. RTE. 128								
13C		20	177 + 62 RT.	177 + 88 RT.	0.01 A±		ALL R.T. & L.						(200 S.F.±) HWY. EASE. T.H. 19								
14	WESTFORD, TOWN OF	20	177 + 25 RT. 177 + 50 RT.	177 + 88 RT.	0.02 A±		ALL R.T. & L. CONSTRUCT APPROACH (T)	QCD	7-21-88	WESTFORD	56	27	(673 S.F.±) HWY. EASE. T.H. 19 T.H. 19								
14A			193 + 25 LT.				CUL & DR (P)	QCD	6-12-90	WESTFORD											
15A	JARVIS, GORDON W. & JARVIS, HELEN C., LIFE ESTATE	20	178 + 98 RT. 178 + 98 RT. 178 + 98 RT. 181 + 04 RT.	182 + 23 RT. 180 + 00 RT. 180 + 95 RT.	0.08 A±		SLOPE (T) (0.01 A±) CONST. EASE. (T)(0.03 A±) DRIVE (T)	WD	10-21-88	WESTFORD	56	381	(3608 S.F.±) (515 S.F.±) (1524 S.F.±) 20' GRAVEL M.P. 0338								
			178 + 98 RT.	182 + 27 RT.		2.23 A±															
15B		20	178 + 98 RT.	182 + 27 RT.	0.19 A±		ALL R.T. & L.						HWY. EASE. VT. RTE. 128								
16A	MINOR, SHIRLEY J. & MADELINE L.	20,21	182 + 27 RT. 182 + 69 RT. 182 + 93 RT. 184 + 25 RT. 186 + 02 RT. 186 + 12 RT.	187 + 63 RT. 183 + 34 RT. 185 + 99 RT. 187 + 63 RT.	0.11 A±		DRIVE (T) CONST. EASE. (T)(0.04 A±) DRIVE (T) CONST. EASE. (T)(0.03 A±)	WD	10-17-88	WESTFORD	56	358	14' GRAVEL M.P. 0341 CEDAR HEDGE (1796 S.F.±) 10' GRAVEL M.P. 0347 (1437 S.F.±)								
			182 + 27 RT.	187 + 63 RT.		1.77 A±															
16B		20,21	182 + 27 RT.	187 + 63 RT.	0.31 A±		ALL R.T. & L.						HWY. EASE. VT. RTE. 128								

M.J.R. DATE 6-10-87
 CHECKED BY: K.D.P. DATE 6-10-87

DR. RT. - DRAINAGE RIGHT
 DIT. RT. - DITCHING RIGHT
 CH. RT. - CHANNEL RT.
 DRIVE RT. - DRIVE RIGHT
 CUL. RT. - CULVERT RIGHT
 (D) - DEMOLITION OR REMOVAL
 (W) - WATER SOURCES

PRESENT R.O.W.
 TAKING WITHOUT ACCESS
 TAKING WITH ACCESS
 PERMANENT EASEMENT
 TEMPORARY EASEMENT

LEGEND
 --- CONST. EASE. ---
 SR SR SLOPE RIGHTS
 P SR PROPERTY LINE
 L L TOP OF CUT
 - - - - - TOE OF SLOPE

R.O.W. PLANS
 APPROVED: *Lawrence W. Bell* DATE: 7-2-87
 AGENT D. PLANS & TITLES

WESTFORD
 RS 0229 (5)
 SHEET 10 OF 21

STATE OF VERMONT
AGENCY OF TRANSPORTATION
RIGHT OF WAY PLANS
DETAIL SHEET

PARCEL NO.	GRANTOR	SHEET NO.	BEGINNING STATION	ENDING STATION	TAKING	REM.	RIGHTS	TITLE TAKEN	DATE	TOWN OR CITY RECORDED	BK.	PG.	REMARKS	REVISION NO.	SHEET NO.	DESCRIPTION OF REVISION	DATE	MADE BY	APPROVED BY	
17A	MOORE, TERRANCE G. & CAROL J.	21	187 + 63 RT. 187 + 63 RT.	189 + 63 RT. 188 + 00 RT.	0.03 A±		CONST. EASE. (T) (395 S.F.±)	WD	9/9/88	WESTFORD	56	263	(1114 S.F.±)							
			187 + 63 RT. 188 + 41 RT. 188 + 87± RT. 189 + 53 RT. 189 + 59 RT.	188 + 30 RT. 189 + 63 RT.			SLOPE (T) (0.03 A±) DRIVE (T) REMOVE & RESET (T) DRIVE (T) SLOPE (T) (18 S.F.±)						(1437 S.F.±) 20' GRAVEL M.P. 0352 WISHING WELL 14' GRAVEL M.P. 0354							
17B		21	187 + 63 RT.	189 + 63 RT.	0.12 A±		ALL R.T. & L.						HWY. EASE. VT. RTE. 128							
18A	BOUFFARD, RONALD & JOAN	21	187 + 82 LT. 187 + 82 LT. 188 + 66 LT. 188 + 70 LT. 189 + 00 LT. 189 + 95 LT.	193 + 20 LT. 188 + 56 LT. 189 + 85 LT. 189 + 85 LT.	0.08 A±		CONST. EASE. (T) (380 S.F.±) DRIVE (T) CONST. EASE. (T) (0.01 A±) SLOPE (P) (152 S.F.±)	COND	11/22/88	WESTFORD	56	546	(3510 S.F.±) 14' GRAVEL M.P. 0352 (600 S.F.±) 14' GRAVEL DRIVE M.P. 0355 (1200 S.F.±)							
			190 + 70 LT.	192 + 65 LT.			SLOPE (P) (0.03 A±)													
18B		21	187 + 82 LT.	193 + 21 E	0.31 A±		ALL R.T. & L.						HWY. EASE. VT. RTE. 128							
19A	CHITTENDEN TRUST CO.	21	192 + 08 RT. 192 + 22 RT.	192 + 50 RT.	0.01 A±			COND	11/22/88	WESTFORD	56	546	(252 S.F.±) 12' GRAVEL DRIVE M.P. 0359							
19B		21	192 + 08 E	193 + 21 E	0.06 A±		ALL R.T. & L.						(2500 S.F.±) HWY. EASE. VT. RTE. 128							

M. M.J.R. DATE 6-10-87
CHECKED BY: K.D.P. DATE 6-10-87

DR. RT.- DRAINAGE RIGHT
DIT. RT.- DITCHING RIGHT
CH. RT.- CHANNEL RT.
DRIVE RT.- DRIVE RIGHT
CUL. RT.- CULVERT RIGHT
(D) - DEMOLITION OR REMOVAL
(W) - WATER SOURCES

PRESENT R.O.W.
TAKING WITHOUT ACCESS

TAKING WITH ACCESS
PERMANENT EASEMENT
TEMPORARY EASEMENT

LEGEND

--- CONST. EASE. ---
SR SR SLOPE RIGHTS
P PROPERTY LINE
L TOP OF CUT
O O TOE OF SLOPE

RO.W PLANS

APPROVED: Lawrence A. Blais DATE: 7-2-87
AGENT D. PLANS & TITLES

WESTFORD
RS 0229 (5)
SHEET 11 OF 21

TABLE OF PROJECT PROPERTY ACQUISITION

STATE OF VERMONT
AGENCY OF TRANSPORTATION
RIGHT OF WAY PLANS
DETAIL SHEET

PARCEL NO.	GRANTOR	SHEET NO.	BEGINNING STATION	ENDING STATION	TAKING	REM.	RIGHTS	TITLE TAKEN	DATE	TOWN OR CITY RECORDED	BK.	PG.	REMARKS	REVISION NO.	SHEET NO.	DESCRIPTION OF REVISION	DATE	MADE BY	APPROVED BY
20	VERMONT ELECTRIC CO-OP, INC.							COND	11-22-88	WESTFORD	56	546	UTILITY						
21	CENTRAL VERMONT PUBLIC SERVICE CORP.							COND	11-22-88	WESTFORD	56	546	UTILITY						
22	NEW ENGLAND TELEPHONE CO.							COND	11-22-88	WESTFORD	56	546	UTILITY						
	MAINTENANCE AGREE AREA NO. 1	20	177+50 RT.	177+50 RT.									TOWN HIGHWAY #19 LENGTH (20')						
23A	ROMAN CATHOLIC DIOCESE OF BURLINGTON, VT. INC.	19	REV. 162+70 LT. REV. 162+70 LT. REV. 162+70 LT.	REV. 164+20 LT. REV. 164+20 LT. REV. 164+20 LT.	(0.03A±)	(1.26A±)	CONST. EASE. (T) (0.01A±)	WD	6-30-88		55	425	1500 S. F. ± 753 S. F. ±						
23B		19	REV. 162+70 LT.	REV. 164+20 LT.	(0.08A±)		ALL R.T. & I.						3750 S. F. ± HWY. EASE. VT. RTE. 128						

MADE BY: A. JONES DATE 6/10/87
 CHECKED BY: K. PERKINS DATE 6/10/87
 PROP. ADMIN. 5-87

DR. RT.- DRAINAGE RIGHT
 DIT. RT.- DITCHING RIGHT
 CH. RT.- CHANNEL RT.
 DRIVE RT.- DRIVE RIGHT
 CUL. RT.- CULVERT RIGHT
 (D)- DEMOLITION OR REMOVAL
 (W)- WATER SOURCES

PRESENT R.O.W.
 TAKING WITHOUT ACCESS
 TAKING WITHOUT ACCESS ALONG PROPERTY LINE
 TAKING WITH ACCESS
 PERMANENT EASEMENT
 TEMPORARY EASEMENT

LEGEND

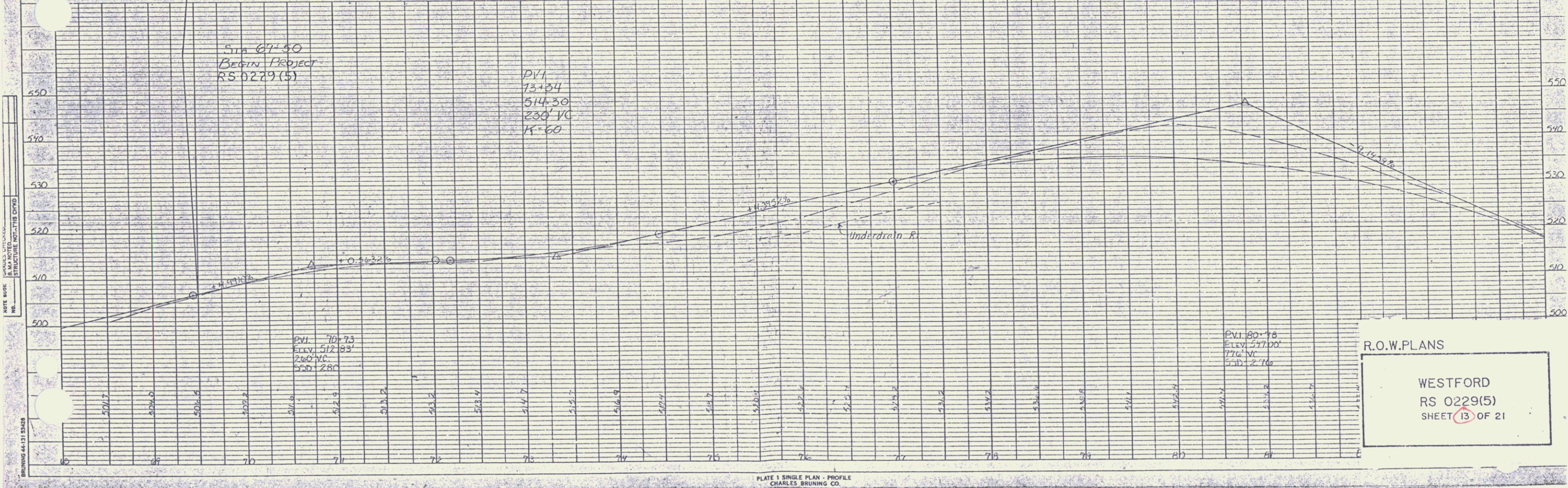
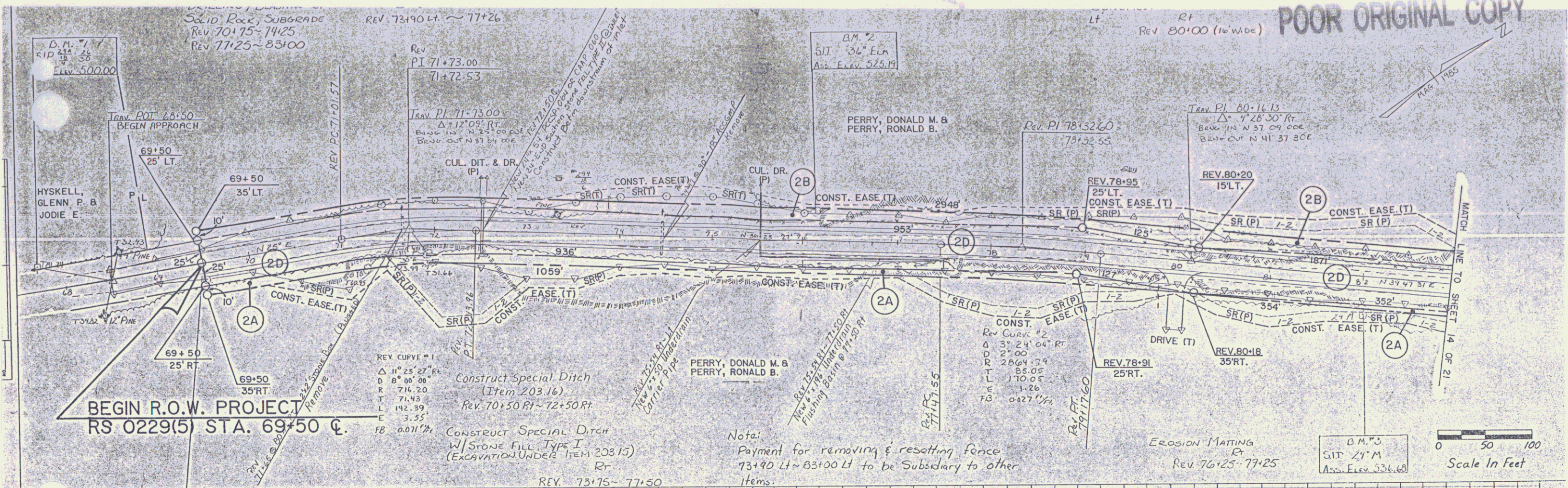
--- CONST. EASE. --- CONSTRUCTION EASEMENT
 SR SR SLOPE RIGHTS
 P --- PROPERTY LINE
 L --- TOP OF CUT
 --- TOE OF SLOPE

R. O. W. PLANS

APPROVED: [Signature] DATE: 7-1-87
 AGENT D. PLANS & TITLES

WESTFORD
 RS 0229(5)
 SHEET 12 OF 21

POOR ORIGINAL COPY



R.O.W. PLANS
 WESTFORD
 RS 0229(5)
 SHEET 13 OF 21

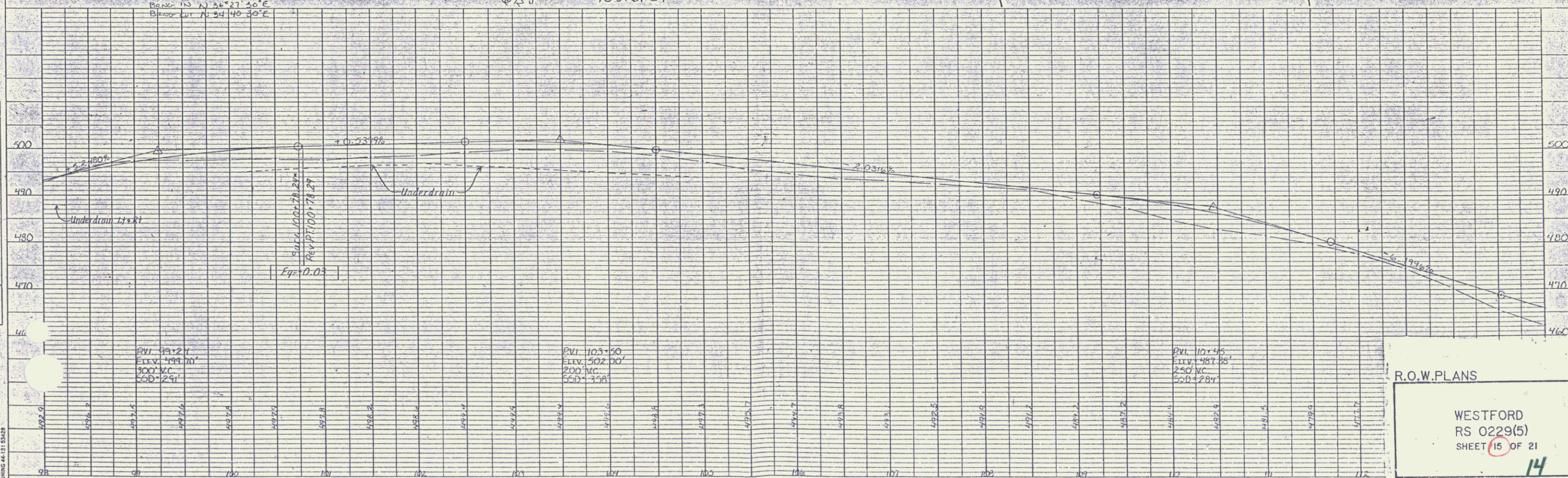
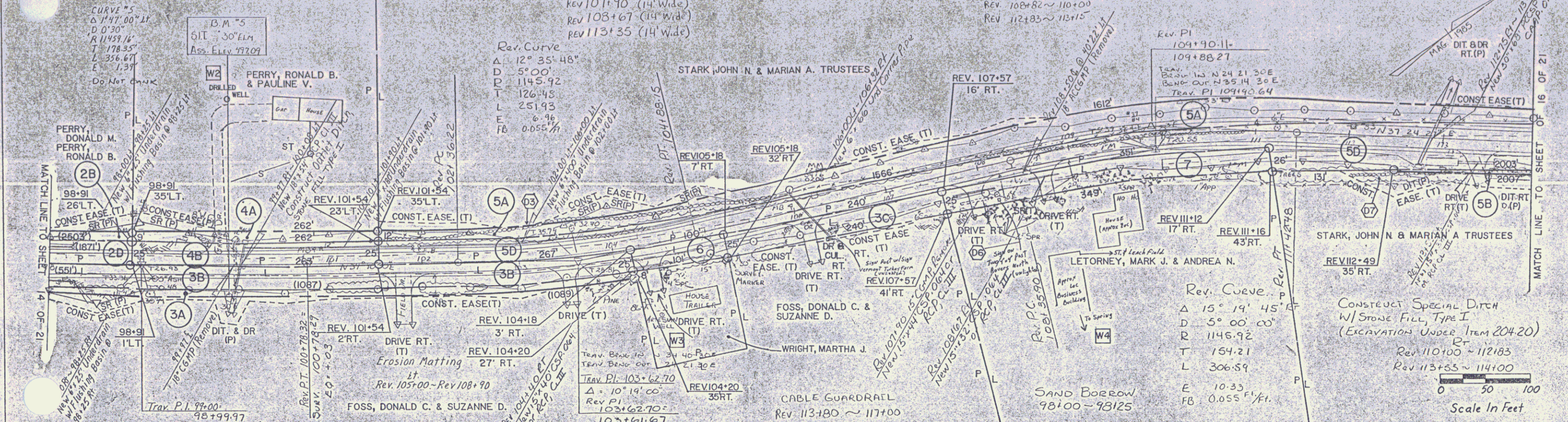
NOTE:
 OLD STONE FROM DR. STARK'S
 WALLS TO BE STOCKPILED BY THE
 TRACTOR AT AN ACCEPTABLE LOCATION.

Drilling & Blasting
 Solid Rock Subgrade
 98125 ~ 99175
 103125 ~ 104175

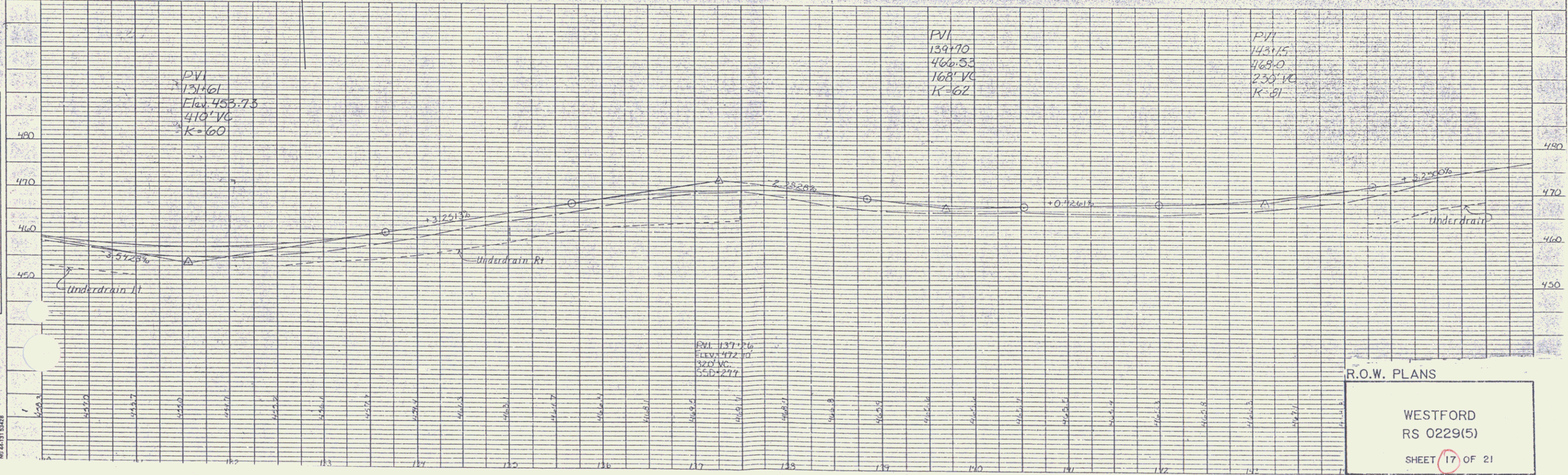
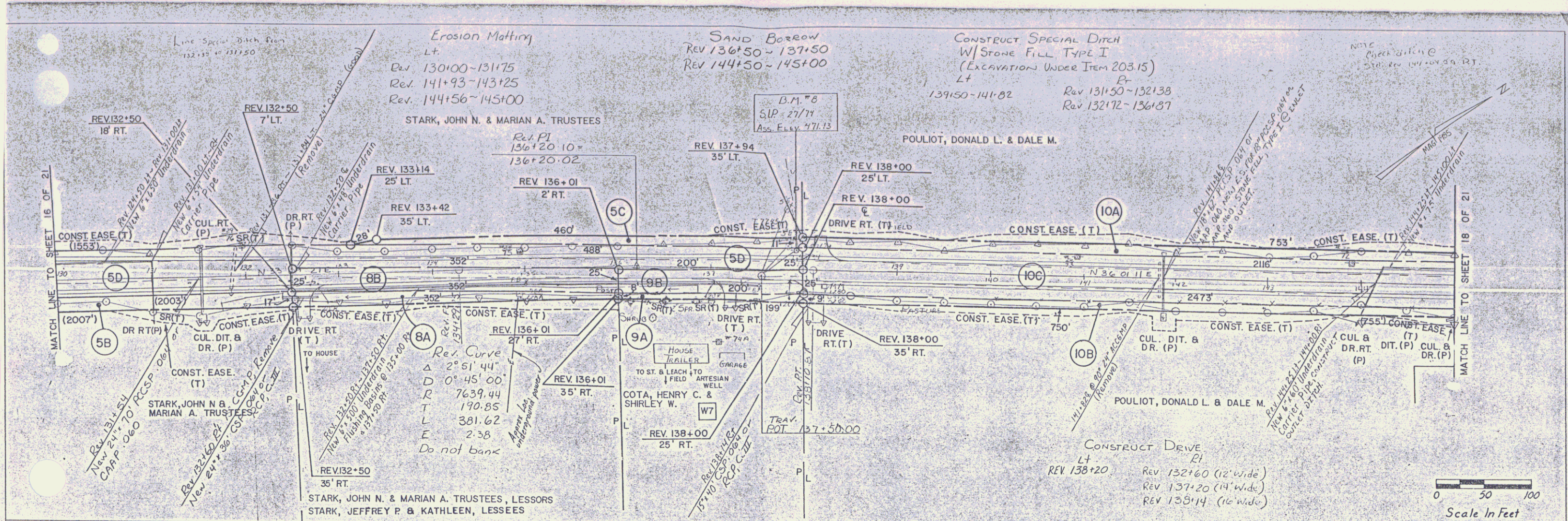
CONSTRUCT DRIVE
 LT
 101+80 (16' wide)
 Rev 103+50 (12' wide)
 Rev 104+40 (14' wide)
 Rev 106+12 (14' wide)
 Rev 107+90 (14' wide)
 Rev 108+67 (14' wide)
 Rev 113+35 (14' wide)

CONSTRUCT SPECIAL DITCH
 W/STONE FILL, TYPE I
 (EXCAVATION UNDER ITEM 203.15)
 LT
 98100-98125
 98100-98125
 Rev 108+11 ~ 108+50
 Rev 108+82 ~ 110+00
 Rev 112+83 ~ 113+15

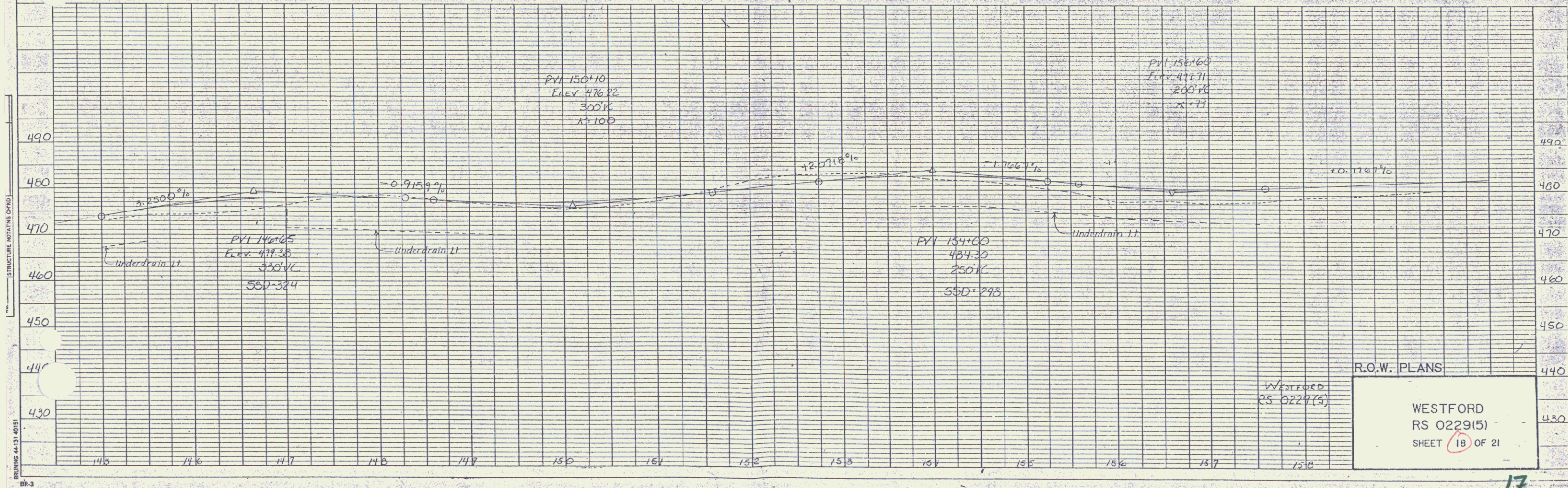
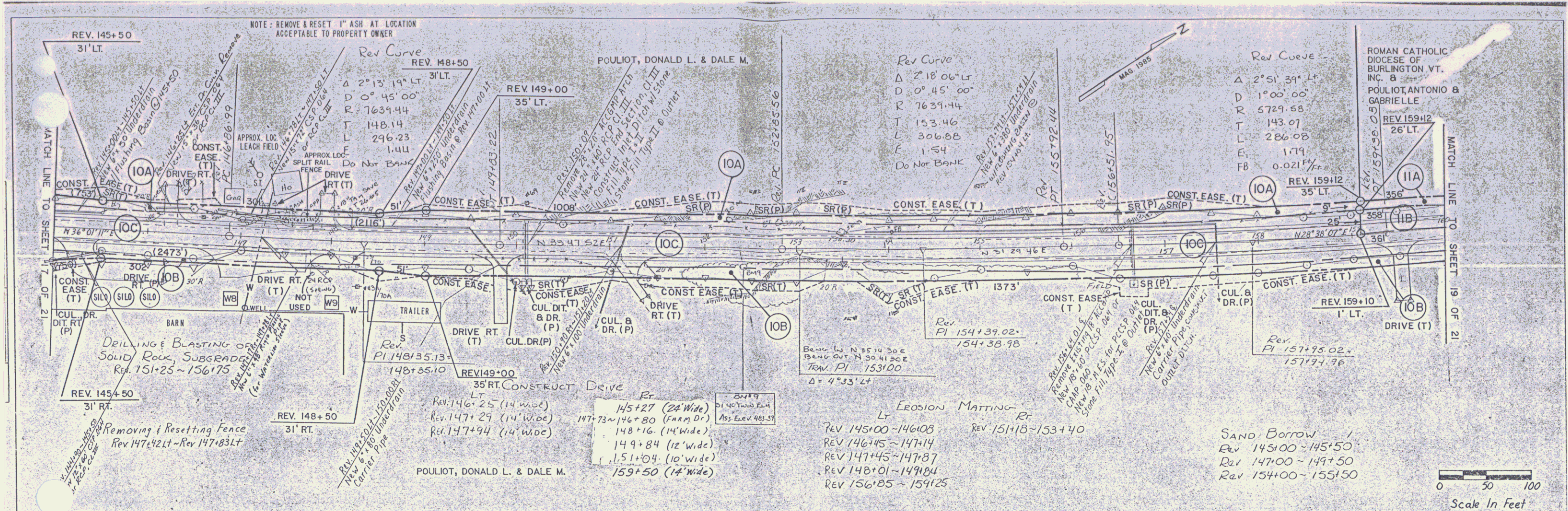
CONSTRUCT SPECIAL DITCH
 W/STONE FILL, TYPE II
 (EXCAVATION UNDER ITEM 203.25)
 LT
 Rev 110+00 ~ 112+83

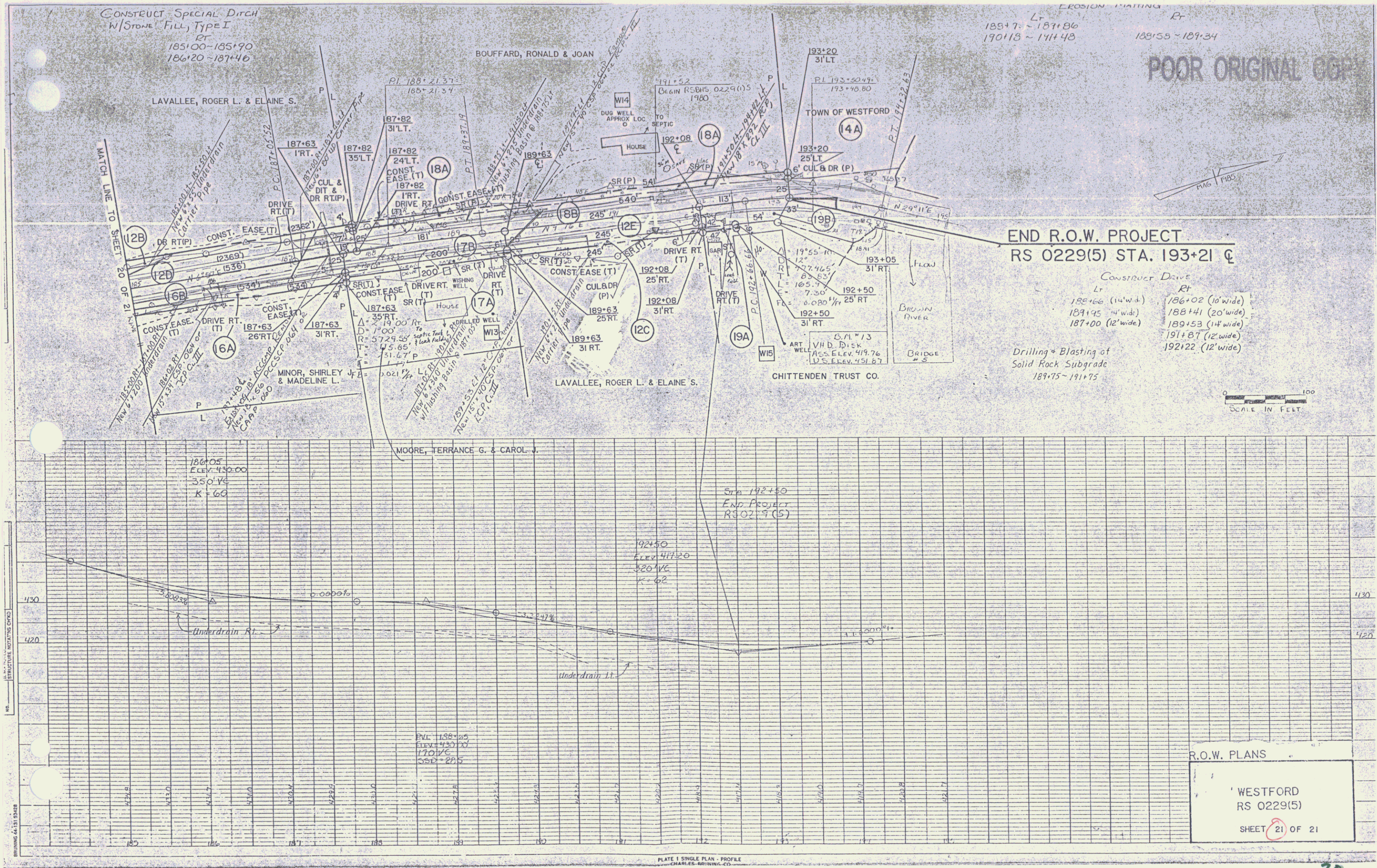


R.O.W. PLANS
 WESTFORD
 RS 0229(5)
 SHEET 15 OF 21
 14



16





20