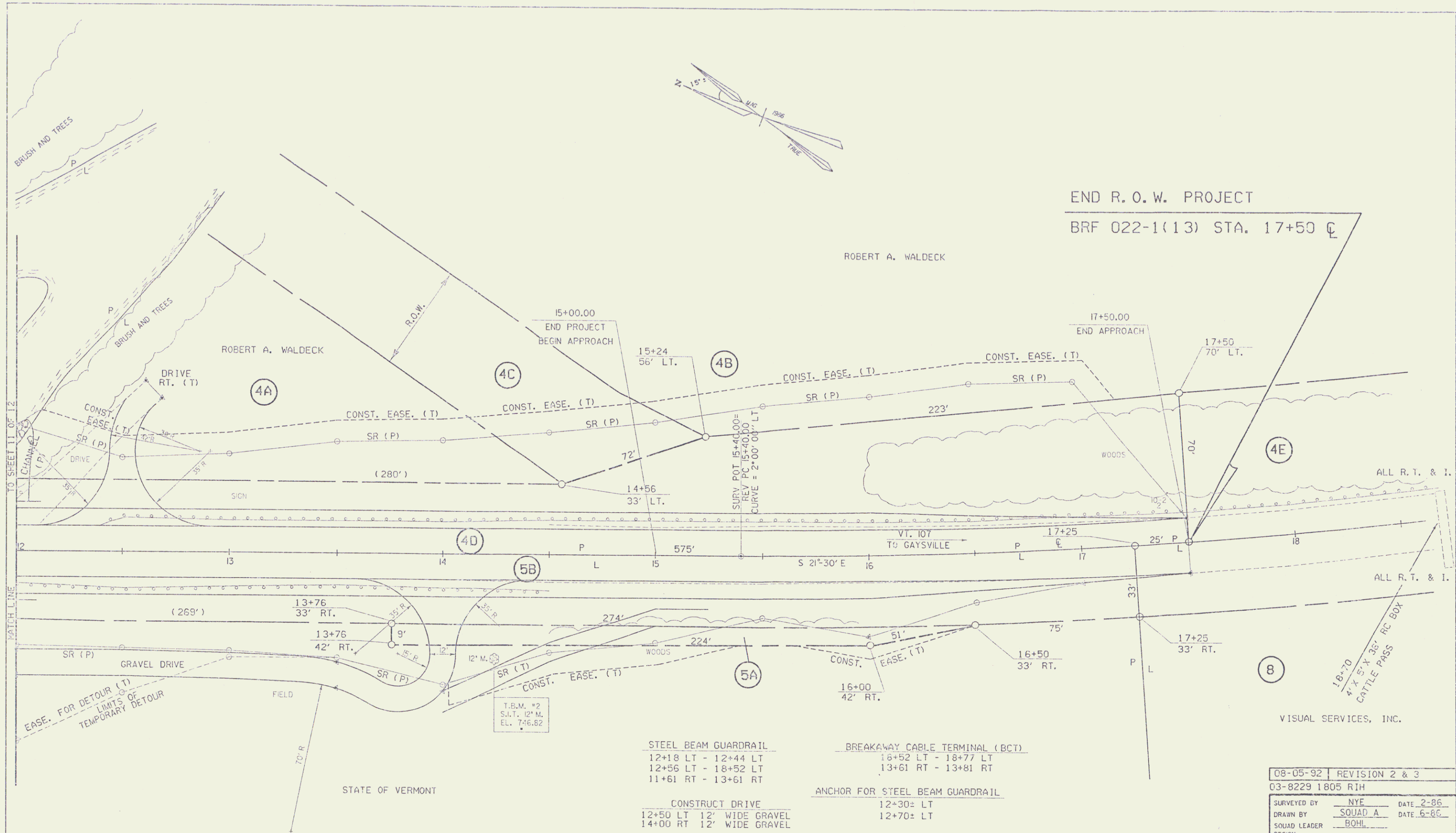
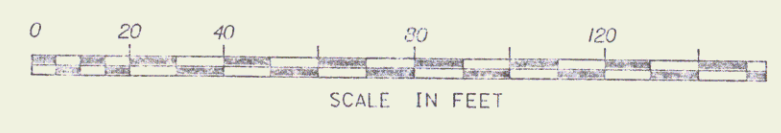


END R.O.W. PROJECT  
BRF 022-1(13) STA. 17+50 CL



DATUM  
VERTICAL \_\_\_\_\_  
HORIZONTAL \_\_\_\_\_



- STEEL BEAM GUARDRAIL
  - 12+18 LT - 12+44 LT
  - 12+56 LT - 18+52 LT
  - 11+61 RT - 13+61 RT
- BREAKAWAY CABLE TERMINAL (BCT)
  - 16+52 LT - 18+77 LT
  - 13+61 RT - 13+81 RT
- ANCHOR FOR STEEL BEAM GUARDRAIL
  - 12+30± LT
  - 12+70± LT
- CONSTRUCT DRIVE
  - 12+50 LT 12' WIDE GRAVEL
  - 14+00 RT 12' WIDE GRAVEL
- REMOVAL OF EXISTING GUARDRAIL
  - 12+00 RT - 14+50 RT
  - 12+00 LT - 12+02 LT
  - 12+40 LT - 18+56 LT
- SPECIAL DITCH W/STONE FILL TYPE I
  - 14+00 RT - 15+25 RT

08-05-92	REVISION 2 & 3
03-8229 1805 RIH	
SURVEYED BY	NYE DATE 2-86
DRAWN BY	SQUAD A DATE 5-86
SQUAD LEADER	BOHL
DESIGN	
FILE NO.	/usr/zfal/070070.dir/83083zz.dgn
PATM	83ell313r.1 DATE PLOTTED 16-AUG-1992
FILE	
STOCKBRIDGE	
BRF 022-1(13)	
R.O.W. SHEET 12 OF 12 SHEETS	

MAR 19 1993

12