

Construct Drive
 226+23 Lt (14) 226+40 Rt (14)
 232+39 Lt (16) 229+12 Rt (18)
 232+00 Rt (12)
 238+78 Rt (16)

Guard Rail, Standard Steel Beam
 7 Wood Posts, Type II
 232+35.5 - 233+85.5 Rt
 232+73 - 234+98 Lt

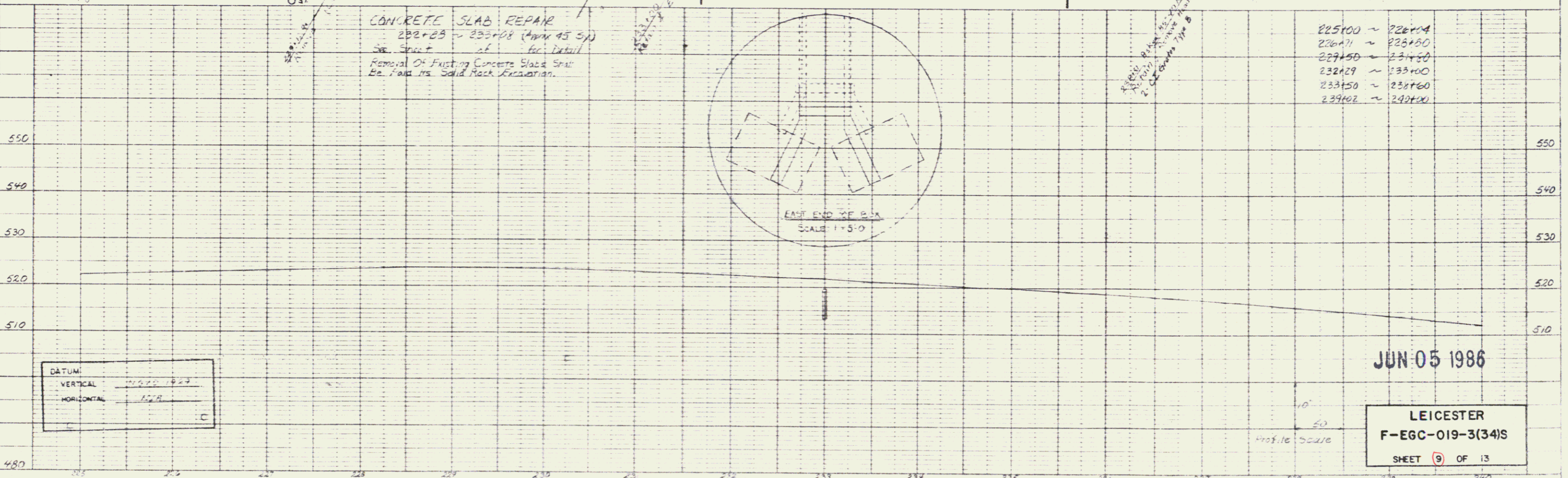
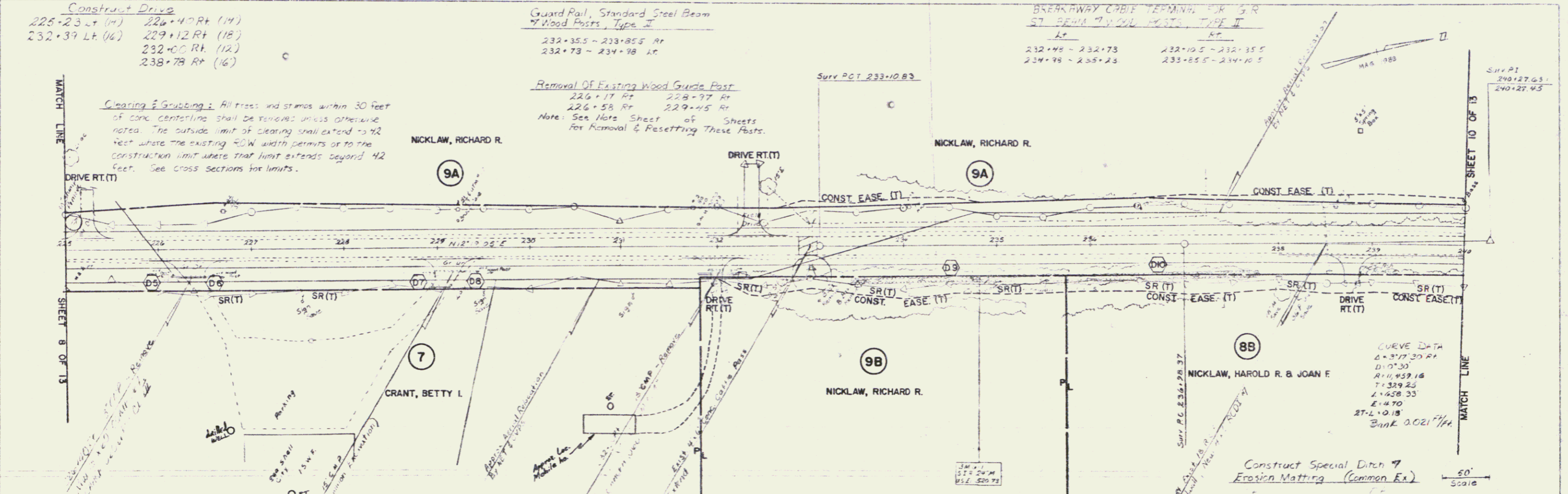
BREAKAWAY CABLE TERMINAL FOR S.R.
 57' BEHIND TYPICAL POSTS, TYPE II
 Lt Rt
 232+98 - 232+73 232+0.5 - 232+35.5
 234+99 - 235+24 233+55.5 - 234+10.5

Removal Of Existing Wood Guide Post
 226+17 Rt 228+97 Rt
 226+58 Rt 229+45 Rt
 Note: See Note Sheet 06 Sheets
 for Removal & Resetting These Posts.

Clearing & Grubbing: All trees and stumps within 30 feet of conc. centerline shall be removed unless otherwise noted. The outside limit of clearing shall extend 542 feet where the existing ROW width permits or to the construction limit where that limit extends beyond 42 feet. See cross sections for limits.

PLAN
 SURVEILED BY: J.M. BROWN
 ALIGNED BY: J.M. BROWN
 CHECKED BY: J.M. BROWN
 DATE: 5/85

PROFILE
 SURVEILED BY: J.M. BROWN
 CHECKED BY: J.M. BROWN
 DATE: 5/85



CONCRETE SLAB REPAIR
 232+88 - 233+08 (Approx 45 SP)
 Removal Of Existing Concrete Slab Shall Be Made by Solid Rock Excavation.

DATUM:
 VERTICAL: Mean Sea Level
 HORIZONTAL: 1/4" = 100'

JUN 05 1986

LEICESTER
 F-EGC-019-3(34)S
 SHEET 9 OF 13