

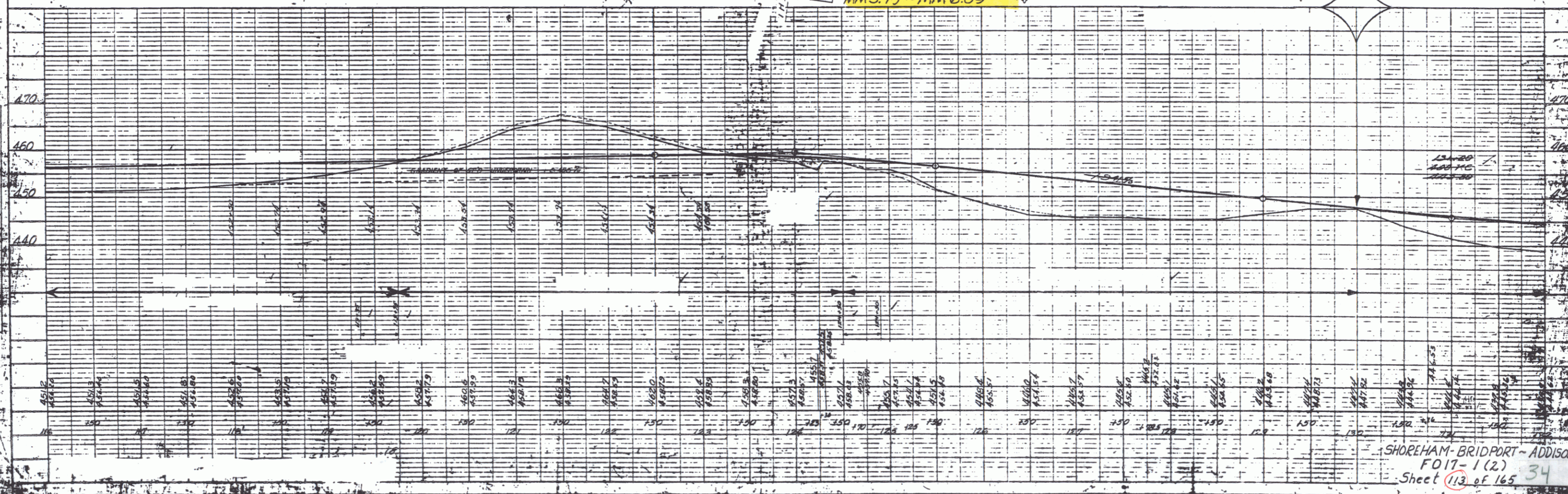
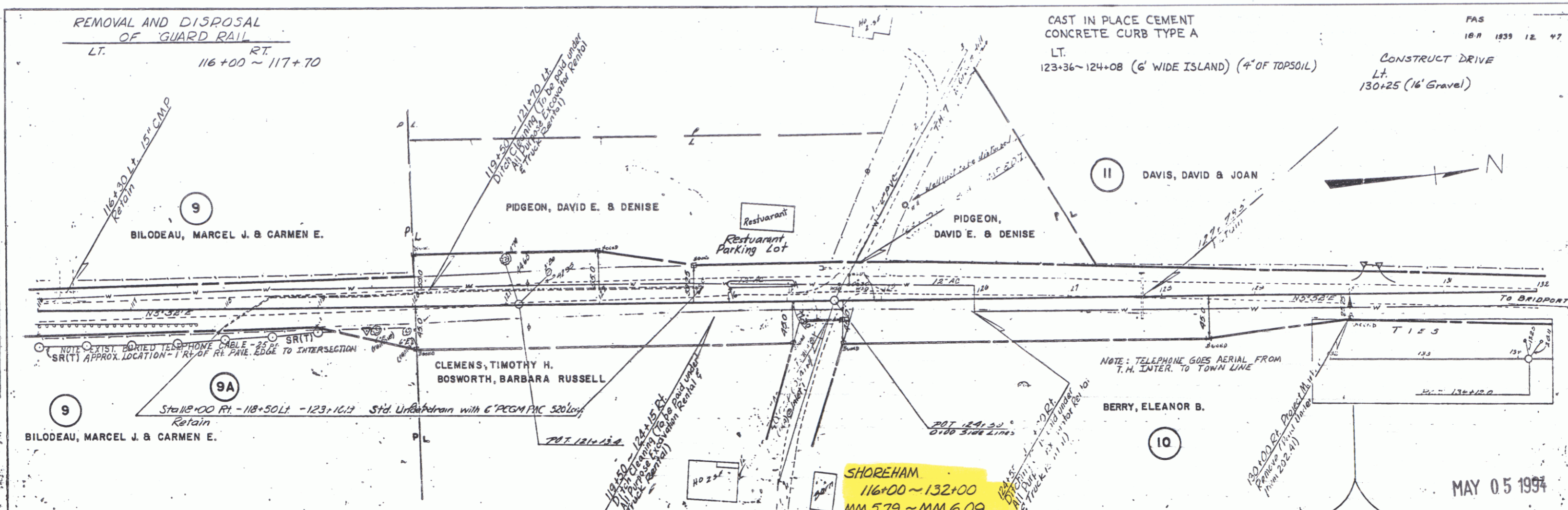
REMOVAL AND DISPOSAL  
OF GUARD RAIL  
LT.  
116+00 ~ 117+70 RT.

CAST IN PLACE CEMENT  
CONCRETE CURB TYPE A  
LT.  
123+36 ~ 124+08 (6' WIDE ISLAND) (4" OF TOPSOIL)

CONSTRUCT DRIVE  
LT.  
130+25 (16' Gravel)

FAS  
18.11.1993 12.47

DATE	18.11.1993
BY	P. J. HAYES
CHECKED	P. J. HAYES
SCALE	AS SHOWN
PROJECT	SHOREHAM BRIDPORT ADDISON
SHEET NO.	113 OF 165



MAY 05 1994

SHOREHAM-BRIDPORT-ADDISON  
FO17-1(2)  
Sheet 113 of 165 34