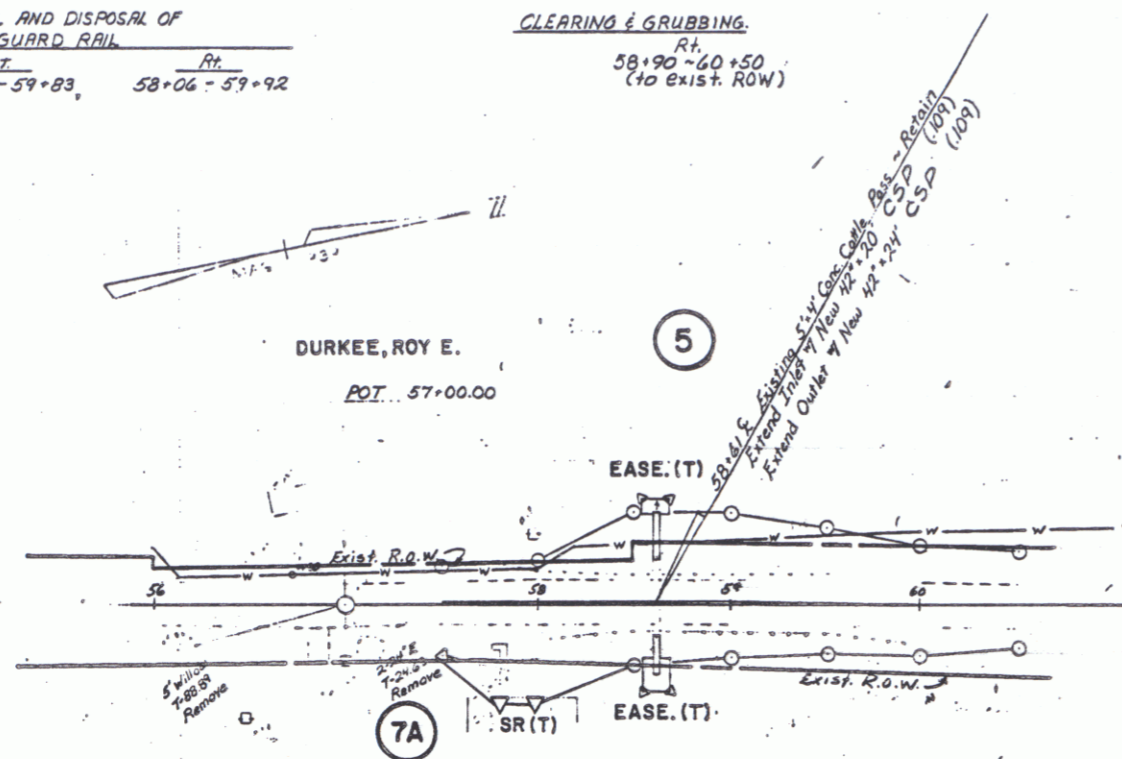


PLAN	DATE	2/22
	BY	J.P.S.
QUANTITIES CHECKED	DATE	2/22
	BY	J.P.S.
STRUCTURE NOTATIONS CHECKED	DATE	2/22
	BY	J.P.S.

PROFILE	DATE	2/22
	BY	J.P.S.
QUANTITIES CHECKED	DATE	2/22
	BY	J.P.S.
STRUCTURE NOTATIONS CHECKED	DATE	2/22
	BY	J.P.S.

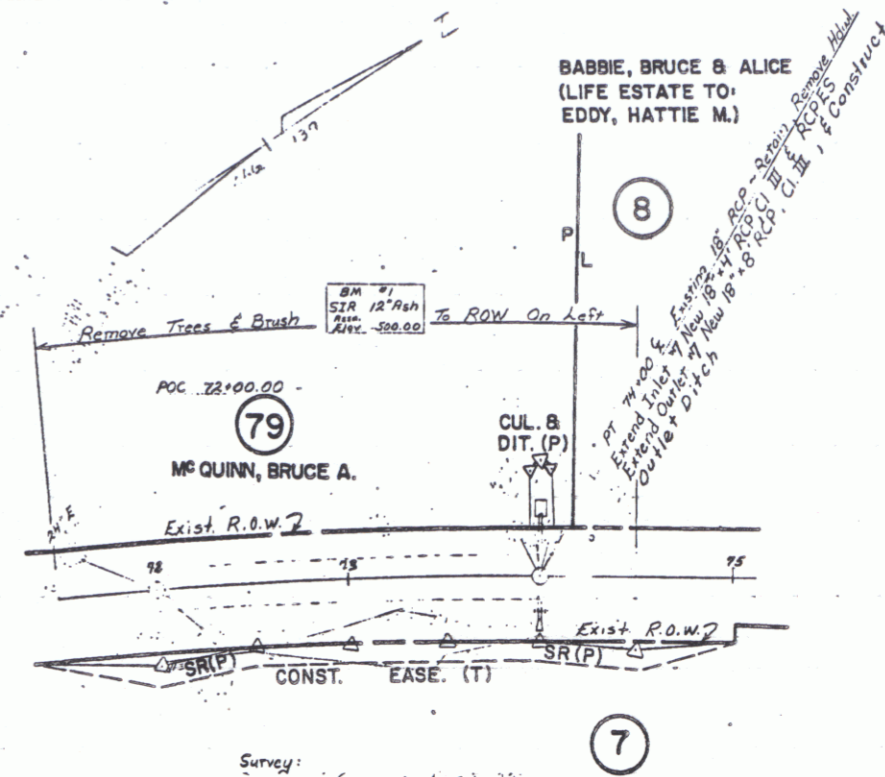
REMOVAL AND DISPOSAL OF
GUARD RAIL
LT. RT.
57+74 - 59+83, 58+06 - 59+92

CLEARING & GRUBBING
RT.
58+90 - 60+50
(to EXIST. ROW)



NOTE: EXIST. BURIED TELEPHONE CABLE - 25 FT.
APPROX. LOCATION - 1' RT. OF RT. EDGE OF PAVE.

MIRRIE, CHARLES M. & MARIANNE

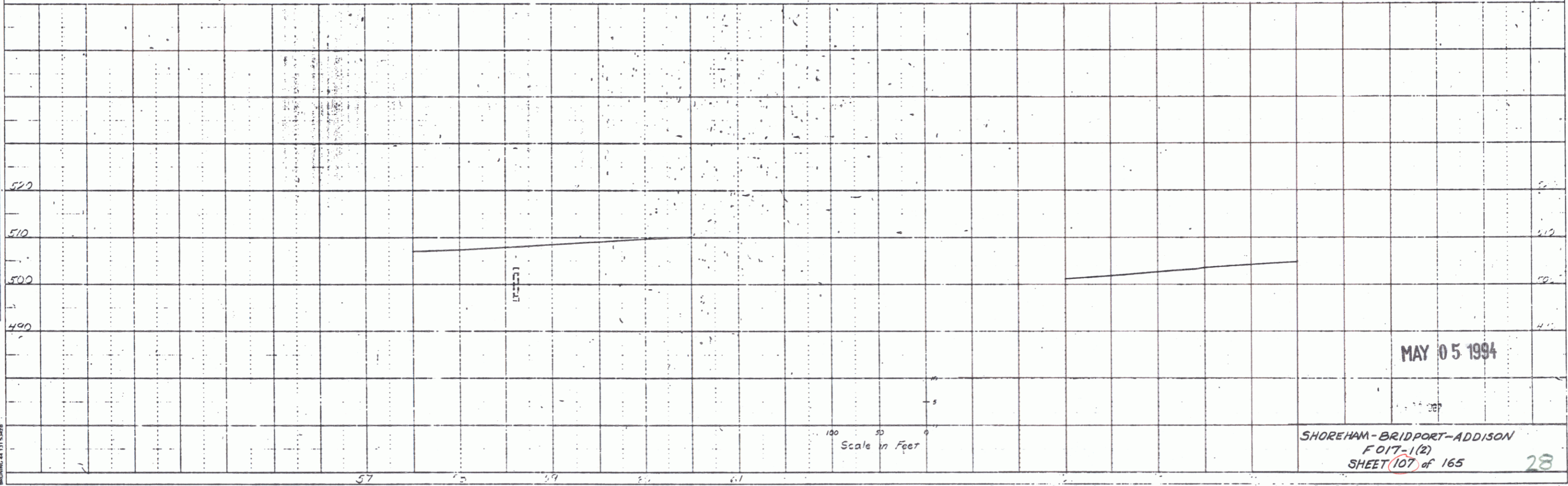


BABBIE, BRUCE & ALICE
(LIFE ESTATE TO:
EDDY, HATTIE M.)

MIRRIE, CHARLES M. & MARIANNE

CLEARING & GRUBBING
RT.
72+00 - 75+00
(To Const. Limits)

SHOREHAM
MM 4.61 - MM 4.74 (Sta. 56+0 - 60+50) See Sheets 106 & 107 of 165
MM 4.95 - MM 5.00 (Sta. 71+50 - 74+50) See Sheets 108 & 109 of 165



MAY 05 1994

SHOREHAM - BRIDPORT - ADDISON
FO17-1(2)
SHEET 107 of 165