

NOTE: EXIST BURIED TELEPHONE CABLE - 25 pr. APPROX. LOCATION 1' RT. OF RT. EDGE OF PAVEMENT

$J = 1/8" \text{ SB RT}$   
 $D = 4'$   
 $R = 111.2:10$   
 $T = 213.7$   
 $E = 424.2$   
 $E = 15.85$

**SHOREHAM**  
 MM. 4.09 - MM 4.18 (Sta. 27+0 - 32+0) See Sheet 103 of 165  
 MM 4.33 - MM 4.37 (Sta. 40+0 - 42+0) See Sheet 102 of 165  
 MM 4.39 - MM 4.52 (Sta. 43+0 - 51+0) See Sheet 101 of 165

NOTE: 15" Basswood at Sta. 45+35 marking PL corner shall be tied in and replaced with a bound.

CLEARING & GRUBBING	
28+00 - 28+47 (to Const. Limits)	Pr 28+84 - 29+78 (to Ex. R.O.W.)
41+50 - 44+50 (to R.O.W. Limits)	41+00 - 41+72 (to Const. Limits)
44+50 - 45+85 (to Construction Limits)	44+47 - 50+00 (to Const. Limits)
45+85 - 46+50 (to R.O.W. Limits)	

DATE: 5-9-94  
BY: FAY/DAVID/AMARAL

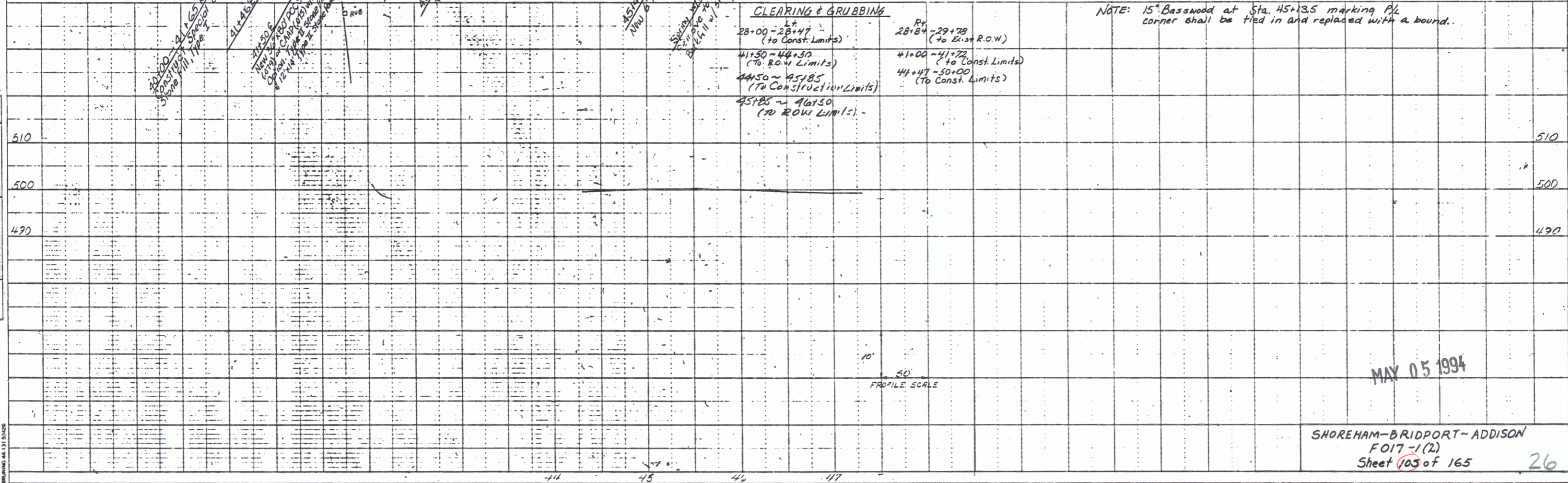
DESIGNED	DATE
CHECKED	DATE
IN CHARGE	DATE

PLM

DATE: 5-9-94  
BY: FAY/DAVID/AMARAL

DESIGNED	DATE
CHECKED	DATE
IN CHARGE	DATE

PROFILE



MAY 05 1994

SHOREHAM-BRIDPORT-ADDISON  
FO17-1(2)  
Sheet 103 of 165 26