

GPS CONTROL POINTS

HVCTRL #1

CGS TRIANGULATION STATION DISC
 "BRISTOL 2 1970"
 NORTH = 595643.717
 EAST = 1485447.780
 ELEV. = 577.427

STATION IS LOCATED ABOUT 0.8 KM (0.5 MILE) WEST OF CENTER OF BRISTOL, IN THE WEST ANGLE OF THE T-INTERSECTION OF STATE HIGHWAY 17 AND A MACADAM ROAD RUNNING NORTH, UP ON A LOW CUTBANK, IN SOUTHWEST CORNER OF SCHOOL PLAYGROUND, FORMERLY BRISTOL AIRPORT. TO REACH STATION FROM THE MAIN INTERSECTION IN CENTER OF BRISTOL, GO WEST ON STATE HIGHWAY 17 FOR 0.97 KM (0.6 MILE) TO STATION ON RIGHT, WHERE THE HIGHWAY BEGINS TO CURVE LEFT, DOWNGRADE. STATION MARK IS A STANDARD DISK STAMPED BRISTOL 2 1910, SET IN TOP OF A 0.25 m (10 INCH) DIAMETER, CONCRETE MONUMENT FLUSH WITH THE GROUND. IT IS 21 m (69 FEET) NORTHWEST OF CENTER LINE OF HIGHWAY 17, 13.4 m (44 FEET) WEST-NORTHWEST OF CENTER LINE OF MACAOAM SIOE ROAO, 1.4 m (4.5 FEET) NORTH OF POWER POLE 29, 6.64 m (21.8 FEET) NORTH OF A FIRE HYORANT, AND 0.46 m (1.5 FEET) SW OF A METAL WITNESS POST

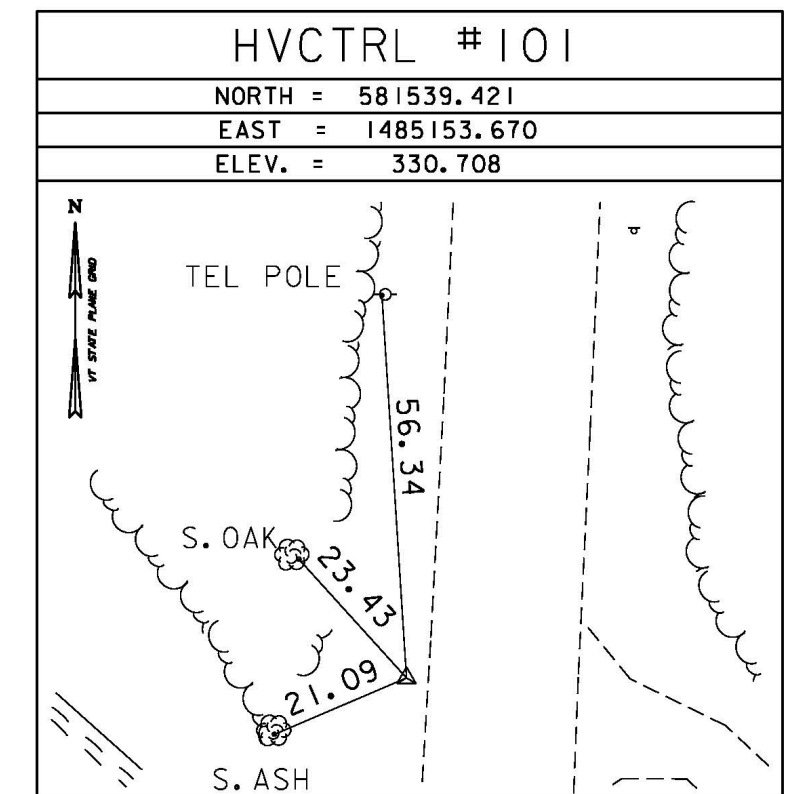
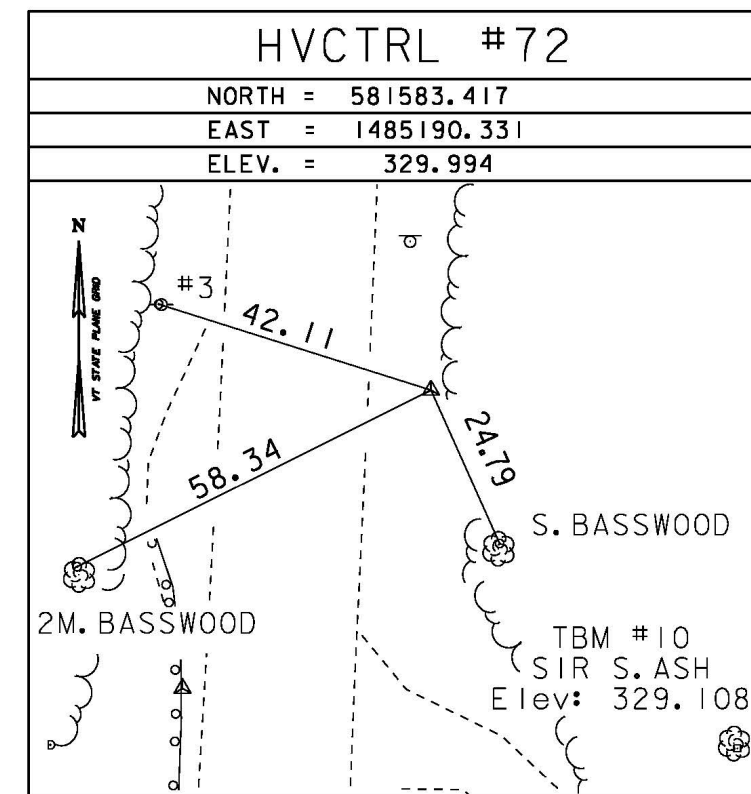
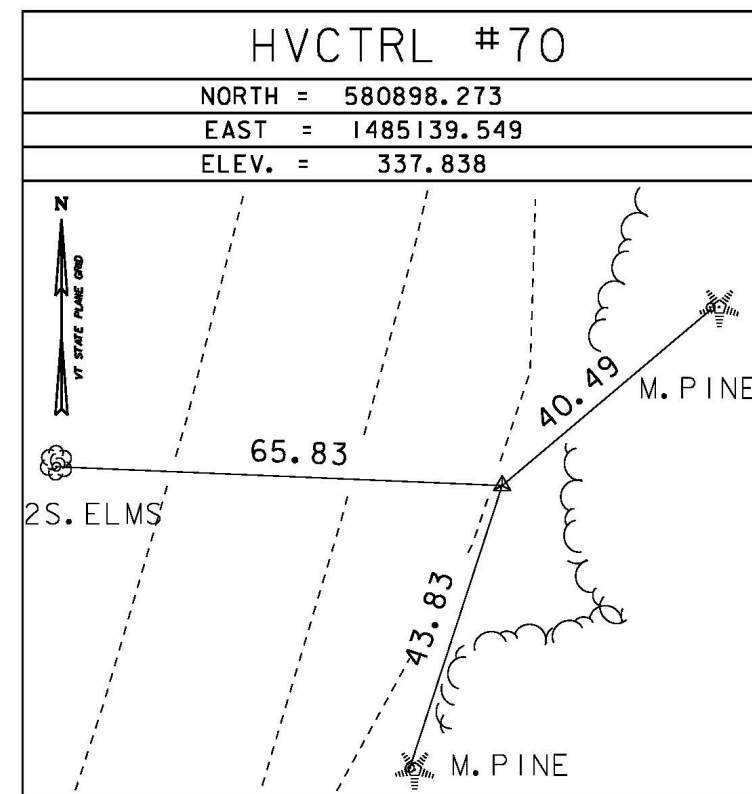
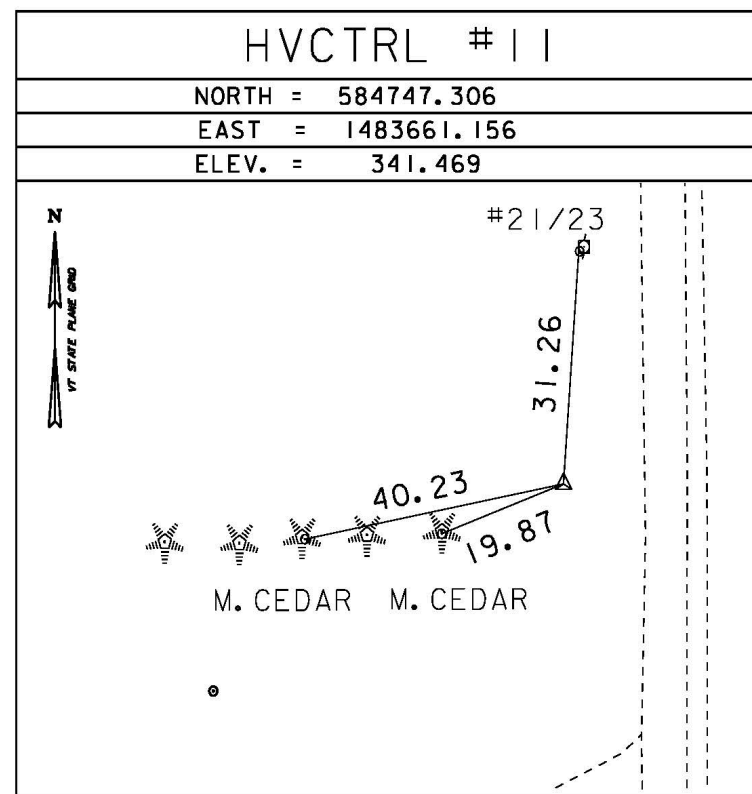
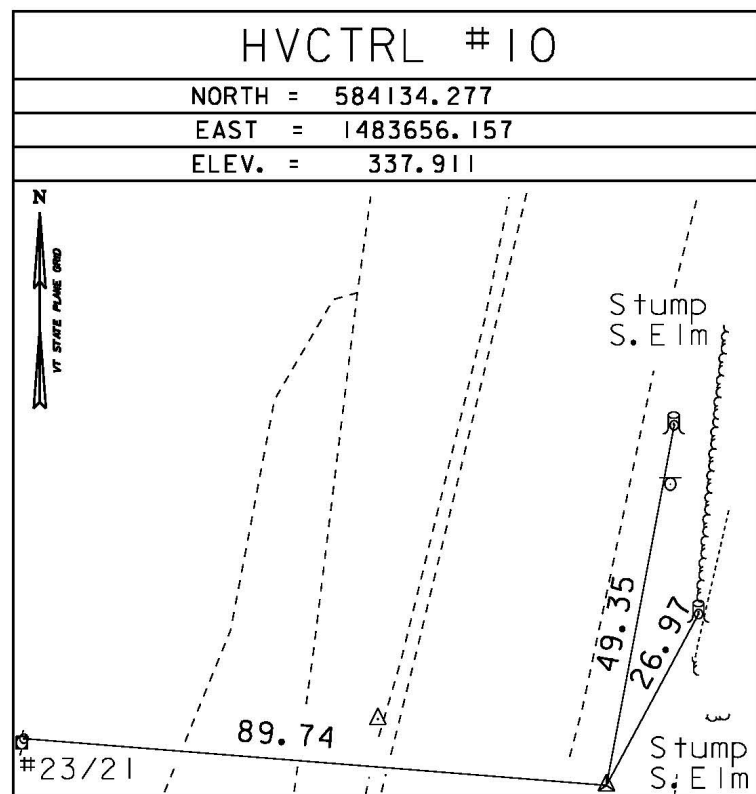
HVCTRL #2

STANDARD DISK STAMPED
 "POWERLINE 1991"
 NORTH = 592458.116
 EAST = 1466209.098
 ELEV. = 425.521

GENERAL LOCATION, NEW HAVEN, VT. TO REACH FROM THE INTERSECTION OF VT ROUTE 17 EAST AND US ROUTE 7 IN NEW HAVEN JUNCTION, GO EAST ALONG VT ROUTE 17 FOR 1.4 KM (0.9 MILE) TO A POWERLINE CROSSING AND THE MARK ON THE LEFT. THE MARK IS, SET FLUSH WITH GROUND SURFACE IN THE TOP OF A 25 cm (1 FOOT) DIAMETER CONCRETE MONUMENT. IT IS 12.7 m (41.7 FEET) NORTH OF AND ABOUT LEVEL WITH THE CENTERLINE OF VT ROUTE 17, 3.7 m (12.1 FEET) EAST OF POLE NO.3, 15.3 m (50.2 FEET) WEST OF POLE NO.303, AND 0.8 m (2.6 FEET) NORTH OF A FIBERGLASS WITNESS POST.

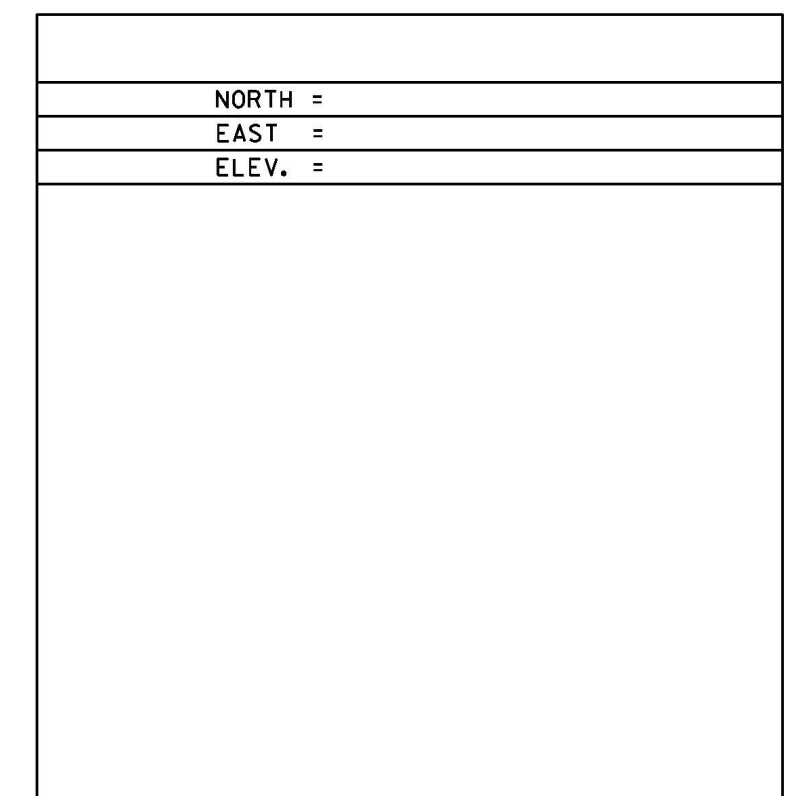
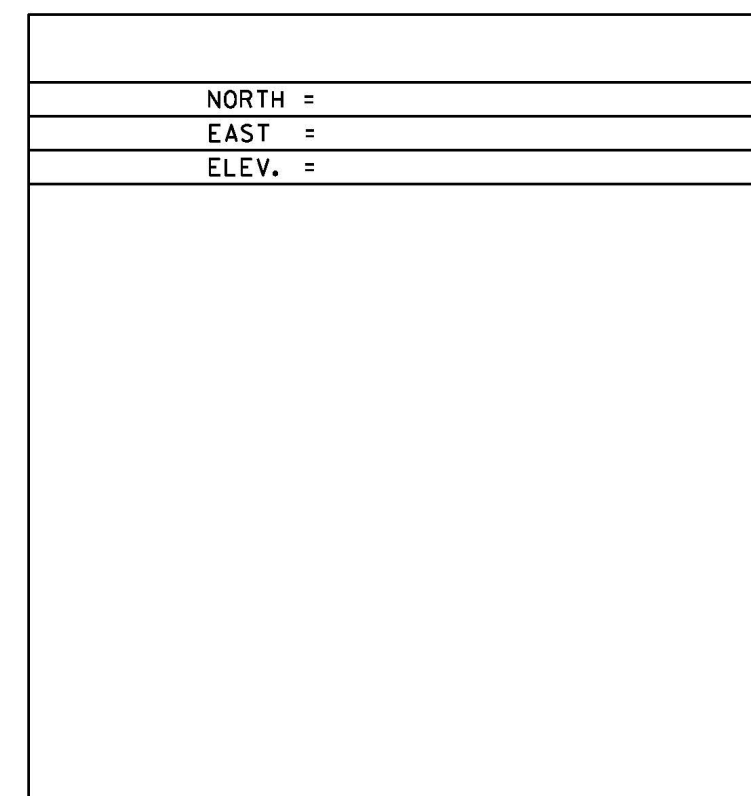
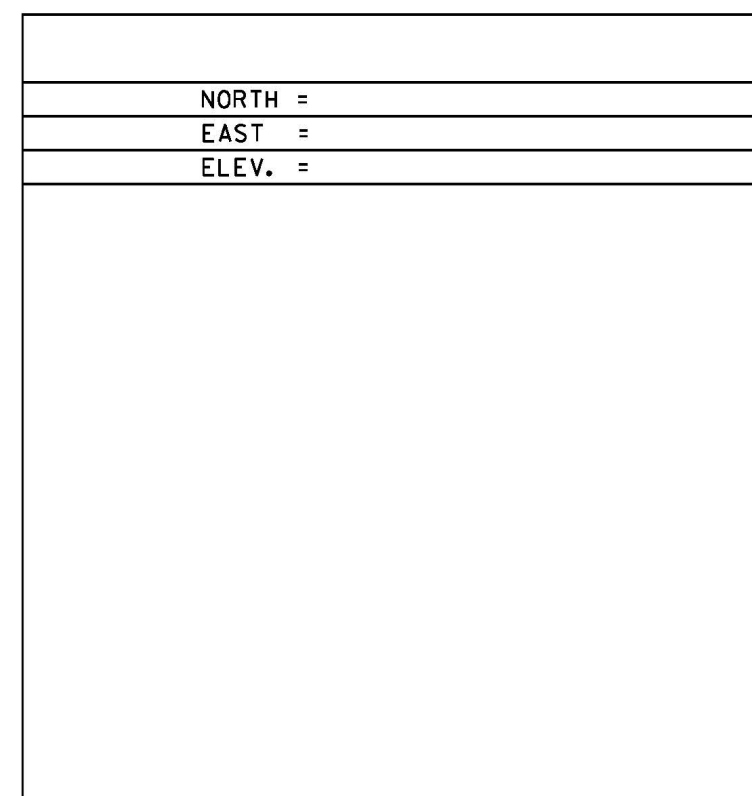
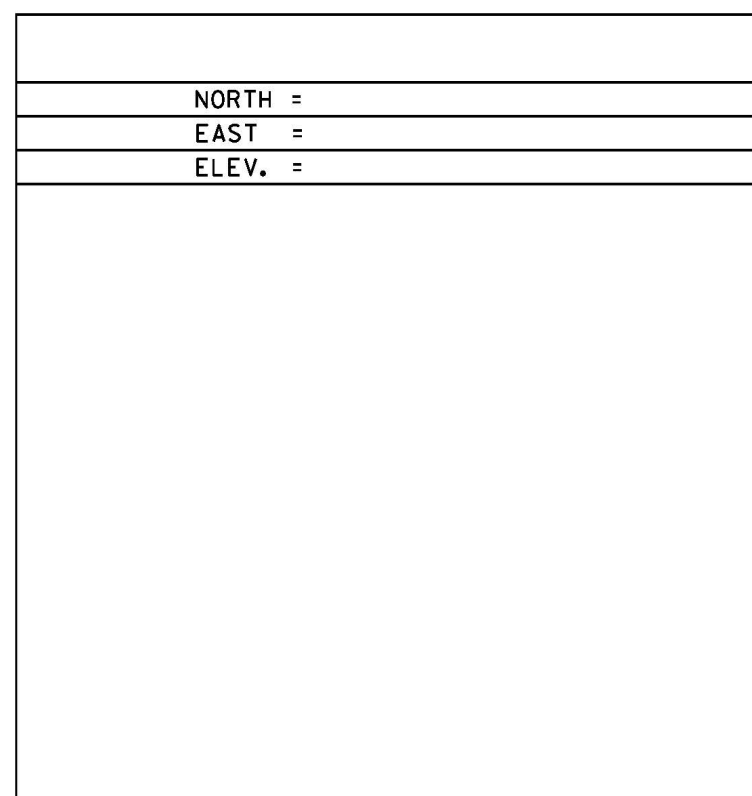
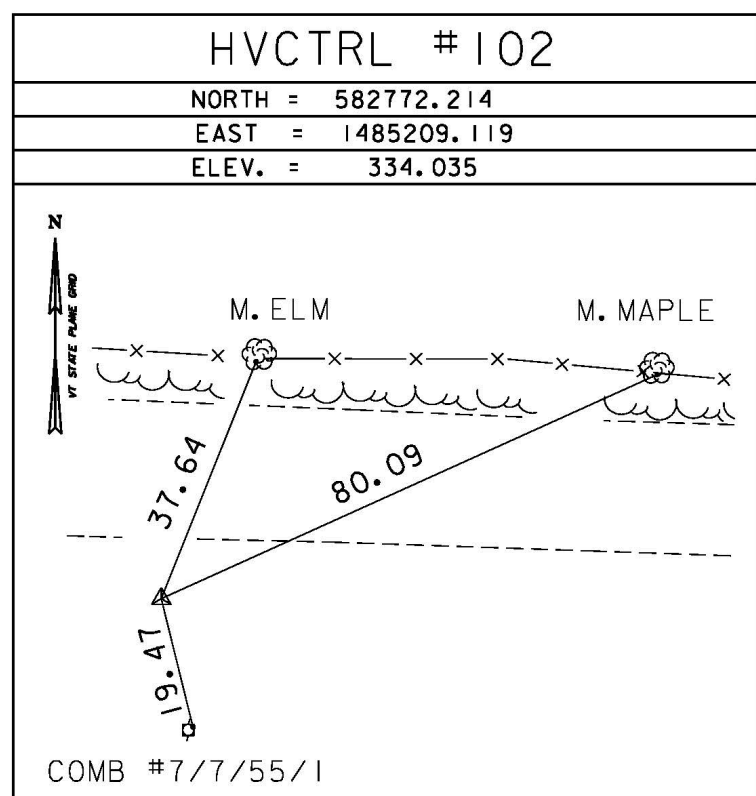
* Description provided by the Vermont Agency of Transportation Geodetic Survey Unit

TRAVERSE TIES



* MAIN TRAVERSE COMPLETED: MAY 10, 1999 BY: CLD

ALIGNMENT TIES



DATUM	
VERTICAL	NAVD 88
HORIZONTAL	NAD 83 (96)
ADJUSTMENT	Unknown

PROJECT NAME:	Bristol
PROJECT NUMBER:	BRF 021-1(15)
FILE NAME:	78f187\su.\x78f187.tif.dgn
PROJECT LEADER:	DRAWN BY: R. Bullock
DESIGNED BY:	CHECKED BY:
	SHEET 15 OF 37